

04-APR-2003 08:28
 M:\Special_Details\verward\stds\02\stds to Special_Details\metric\84803\84803m.dgn
 ericward AT US186688

STATE OF NORTH CAROLINA
 DEPT. OF TRANSPORTATION
 DIVISION OF HIGHWAYS
 RALEIGH, N.C.

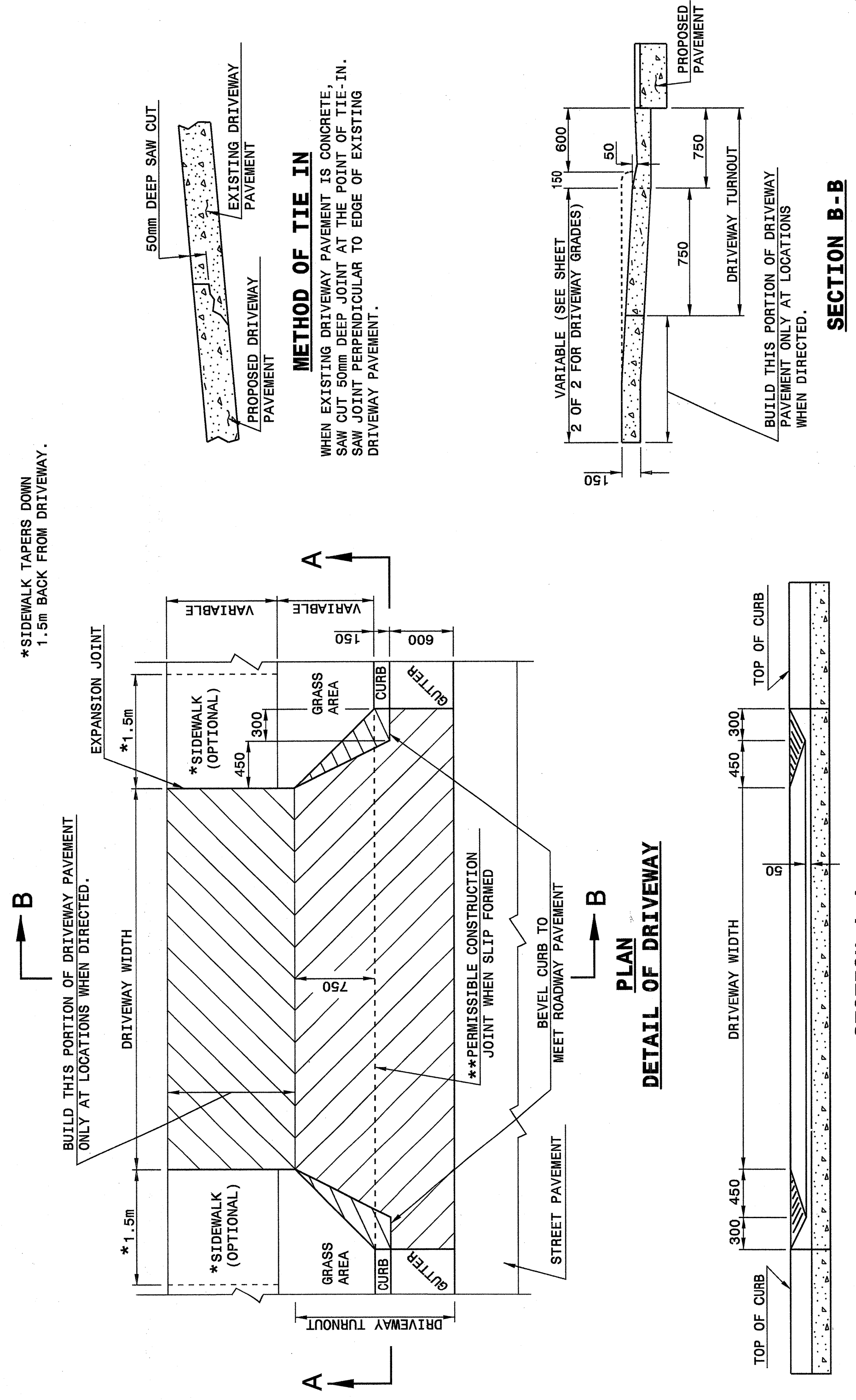
METRIC DETAIL DRAWING FOR
DRIVEWAY TURNOUT
 DROP CURB TYPE

SHEET 1 OF 2
848D03

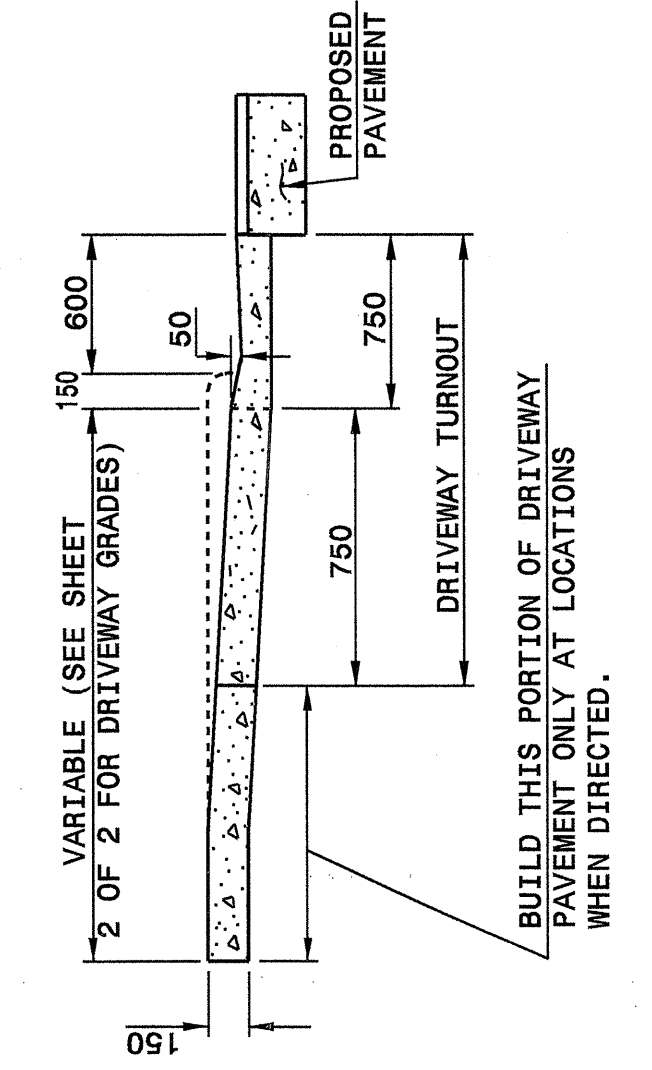
STATE OF NORTH CAROLINA
 DEPT. OF TRANSPORTATION
 DIVISION OF HIGHWAYS
 RALEIGH, N.C.

METRIC DETAIL DRAWING FOR
DRIVEWAY TURNOUT
 DROP CURB TYPE

SHEET 1 OF 2
848D03



METHOD OF TIE IN
 WHEN EXISTING DRIVEWAY PAVEMENT IS CONCRETE, SAW CUT 50mm DEEP JOINT AT THE POINT OF TIE-IN. SAW JOINT PERPENDICULAR TO EDGE OF EXISTING DRIVEWAY PAVEMENT.



SECTION B-B

GENERAL NOTES:
 **NO CONSTRUCTION JOINT WILL BE PERMITTED IF FORMS ARE USED TO CAST DRIVEWAY. SLIP FORMING OF CURB AND GUTTER PERMITS THE USE OF CONSTRUCTION JOINT.

SECTION A-A

Note:
 This drawing is dimensioned in millimeters unless otherwise depicted within the drawing.

STATE OF NORTH CAROLINA
 DEPT. OF TRANSPORTATION
 DIVISION OF HIGHWAYS
 RALEIGH, N.C.

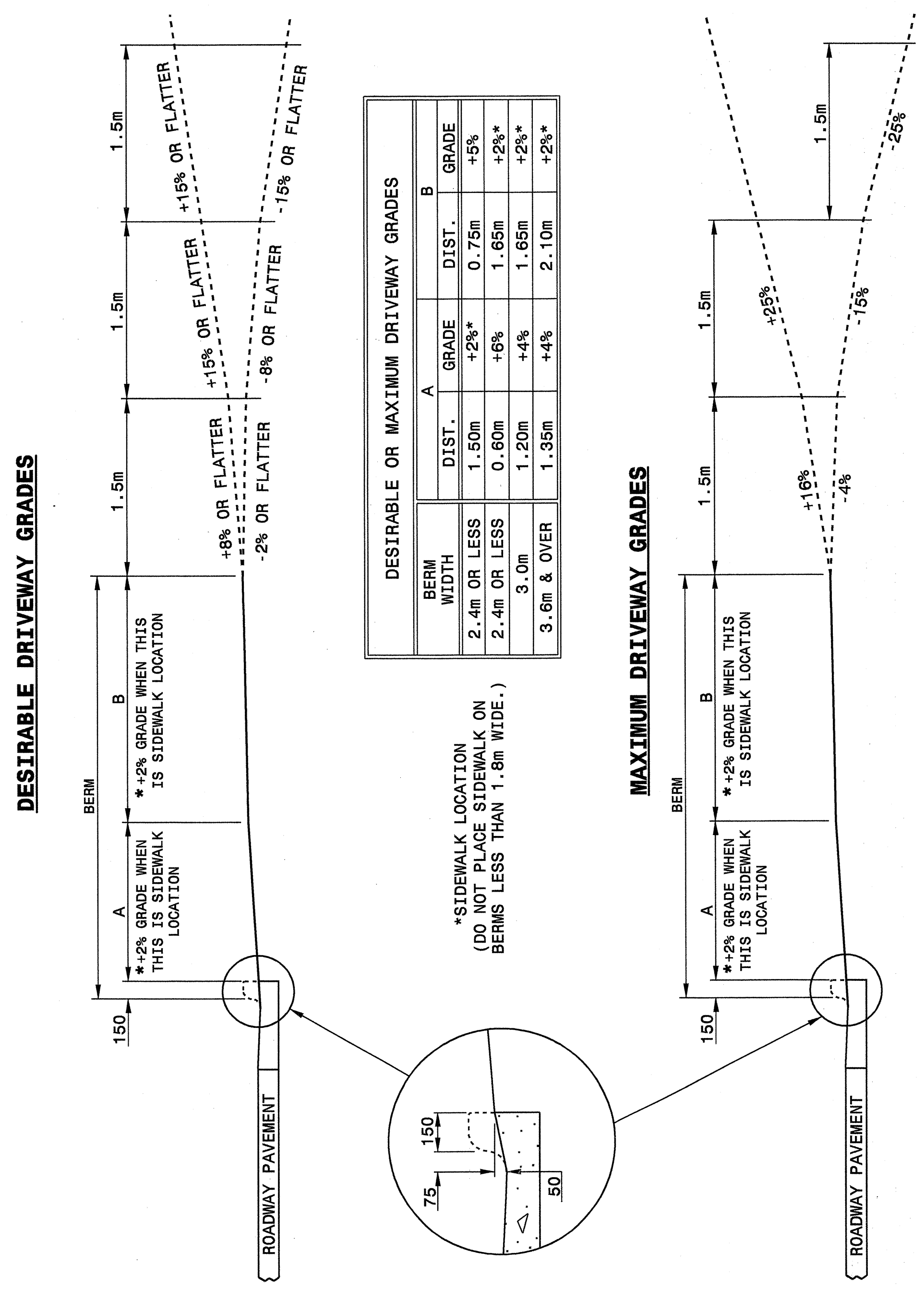
METRIC DETAIL DRAWING FOR
DRIVEWAY TURNOUT
 DRIVEWAY GRADES

SHEET 2 OF 2
848D03

STATE OF NORTH CAROLINA
 DEPT. OF TRANSPORTATION
 DIVISION OF HIGHWAYS
 RALEIGH, N.C.

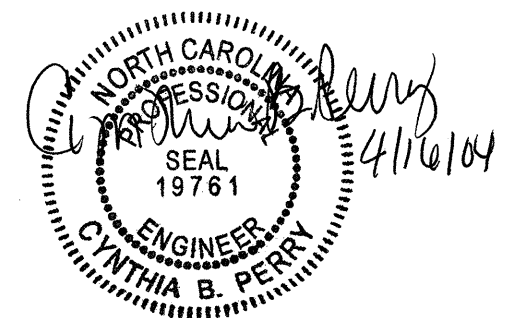
METRIC DETAIL DRAWING FOR
DRIVEWAY TURNOUT
 DRIVEWAY GRADES

SHEET 2 OF 2
848D03



*SIDEWALK LOCATION
 (DO NOT PLACE SIDEWALK ON BERMS LESS THAN 1.8m WIDE.)

Note:
 This drawing is dimensioned in millimeters unless otherwise depicted within the drawing.



DESIGN SERVICES UNIT
 STANDARDS AND SPECIAL DESIGN
 Office 919-250-4128 FAX 919-250-4119

SEE PLATE FOR TITLE

ORIGINAL BY: 2002 STD.848.03 DATE:
 MODIFIED BY: E.E. WARD DATE: 03-27-03
 CHECKED BY: [Signature] DATE: 4-4-03
 FILE SPEC.: /usr/std9/02todetail/metric/84803/84803m.dgn

