

08-Apr-2004 14:25:33 PC18.dgn
 8/17/99

- L -

PI Sta 46+75.753
 $\Delta = 30^\circ 47' 41.0''$ (LT)
 L = 150.491
 T = 77.111
 R = 280.000
 SE = 0.04 m/m

- Y3 -

PI Sta 10+61.938
 $\Delta = 3^\circ 47' 41.2''$ (LT)
 L = 38.845
 T = 19.937
 R = 70.000

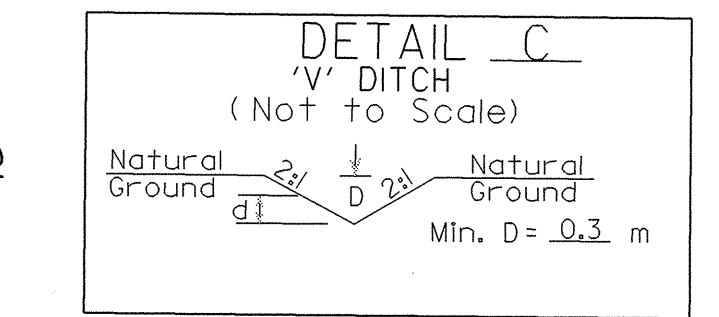
FOR PROFILE OF -L- SEE SHEETS NO. 17 & 18
 FOR PROFILES OF -Y2- & -Y3- SEE SHEET NO. 23
 FOR PROFILE OF -Y4- SEE SHEET NO. 24
 FOR INTERSECTION DETAILS OF -Y2- & -Y3- SEE SHEET NO. 2-F
 FOR INTERSECTION DETAIL OF -Y4- SEE SHEET NO. 2-G

- Y2REV -

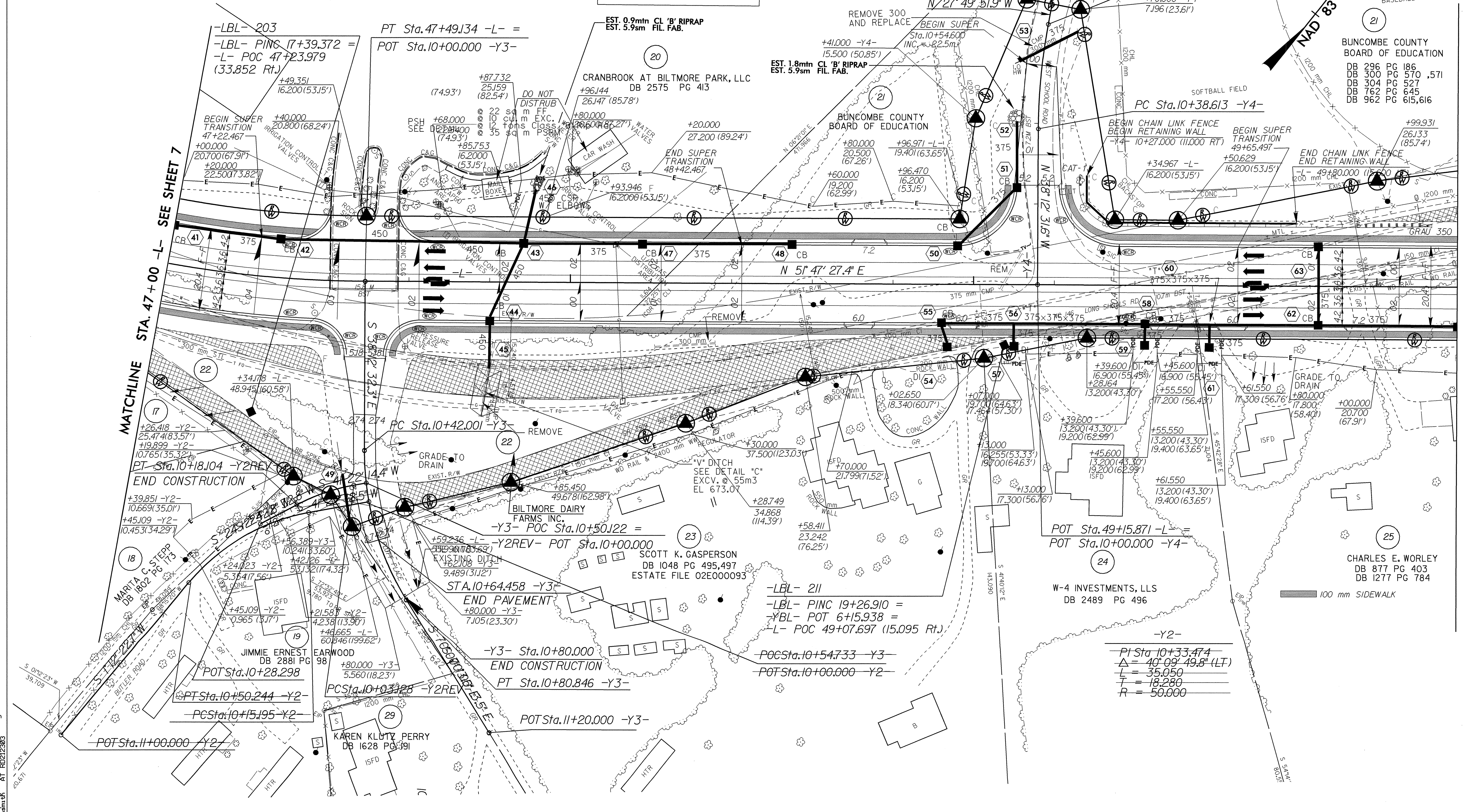
PI Sta 10+10.672
 $\Delta = 17^\circ 09' 41.6''$ (LT)
 L = 14.976
 T = 7.545
 R = 50.000
 SE = 0.04 m/m

- Y4 -

PI Sta 10+51.781
 $\Delta = 10^\circ 22' 39.7''$ (RT)
 L = 26.263
 T = 13.168
 R = 145.000



	PROJECT REFERENCE NO.	R-2813C	SHEET NO.	8
	R/W SHEET NO.			8
	ROADWAY DESIGN ENGINEER			
	HYDRAULICS ENGINEER			
CONST. REV.				4-15-04
R/W REV.				4-15-04



MATCHLINE STA. 47+00 -L- SEE SHEET 7

MATCHLINE STA. 50+20 -L- SEE SHEET 9

BUNCOMBE COUNTY BOARD OF EDUCATION
 DB 296 PG 186
 DB 300 PG 570, 571
 DB 304 PG 527
 DB 762 PG 645
 DB 962 PG 615, 616

CHARLES E. WORLEY
 DB 877 PG 403
 DB 1277 PG 784

100 mm SIDEWALK