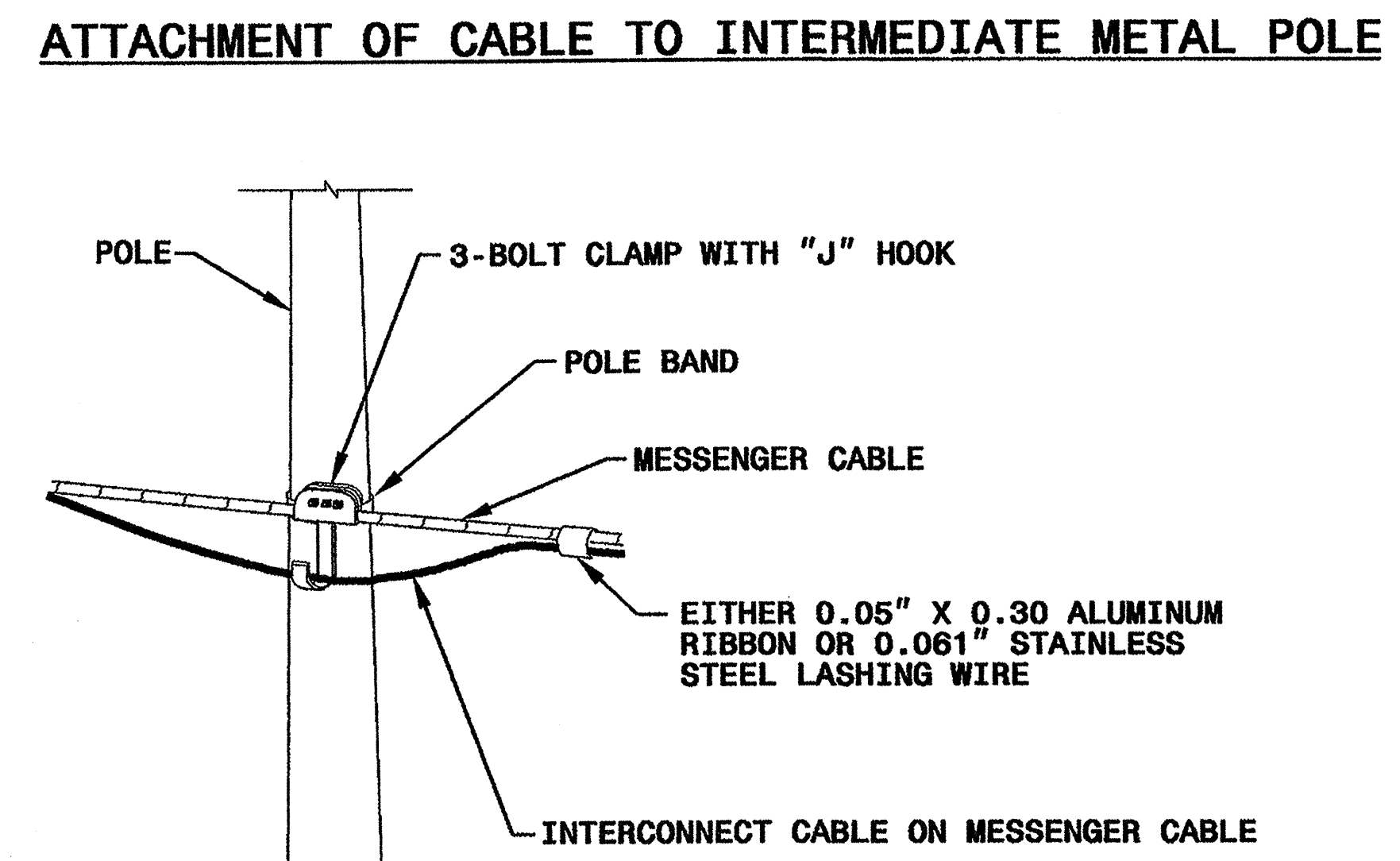
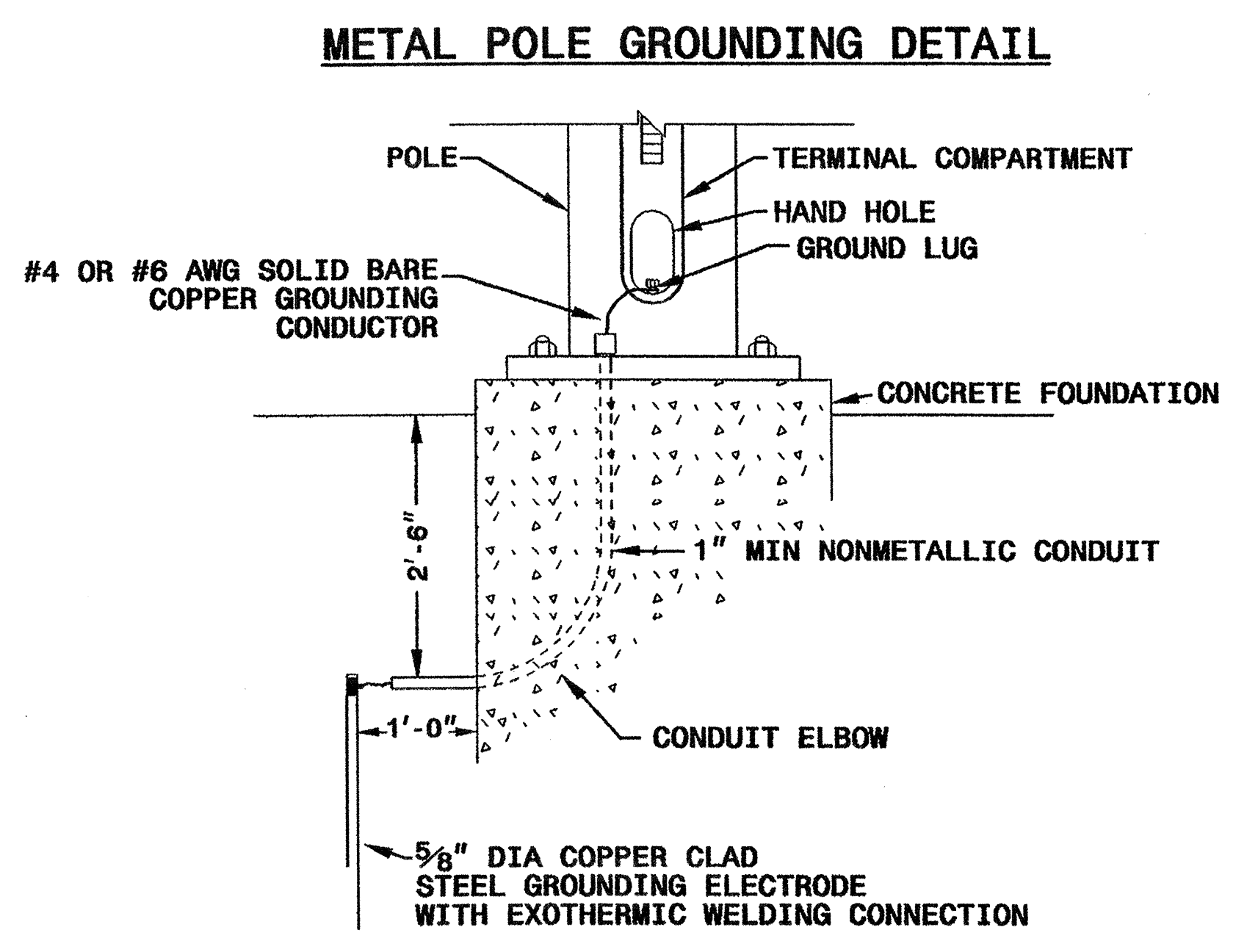
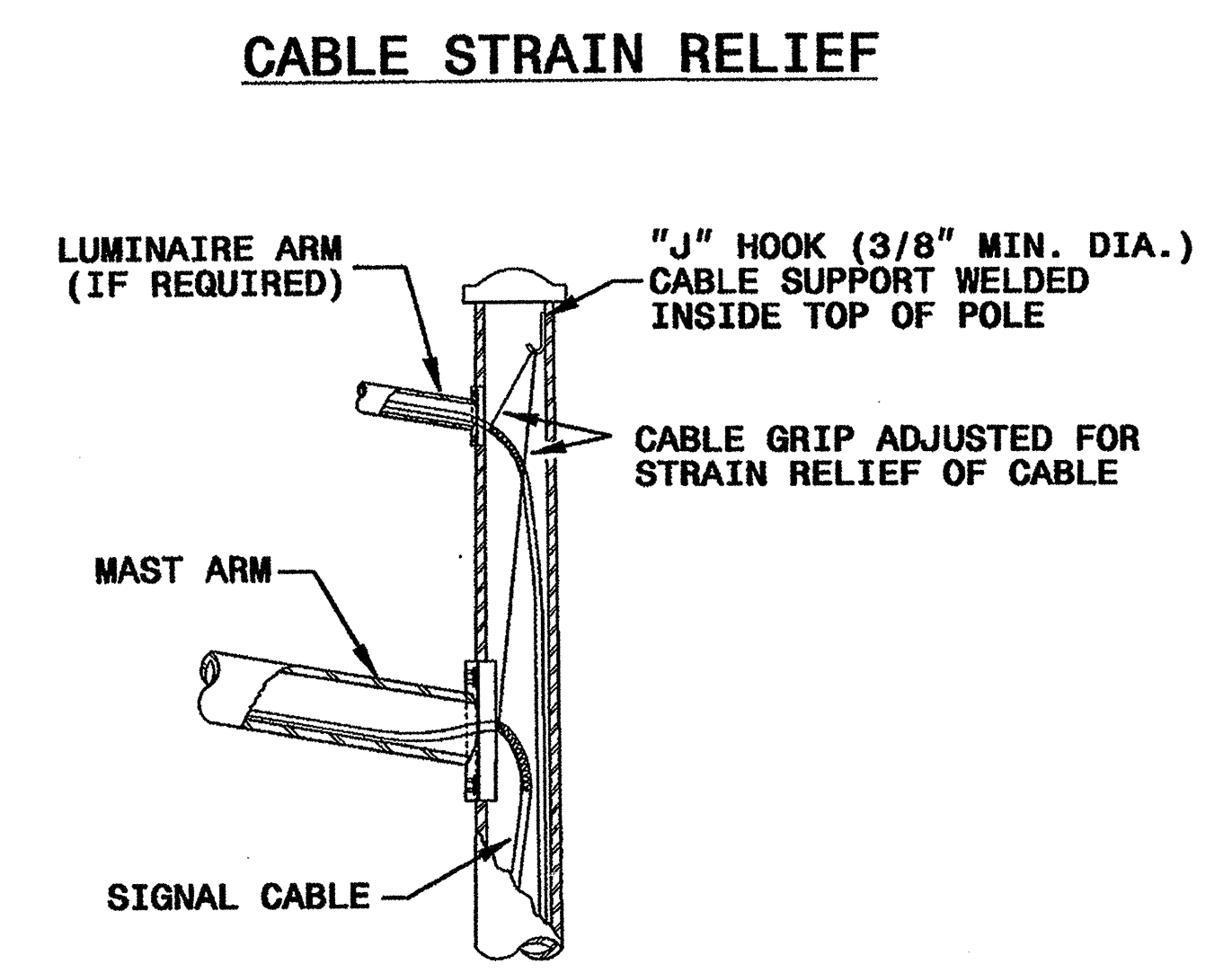
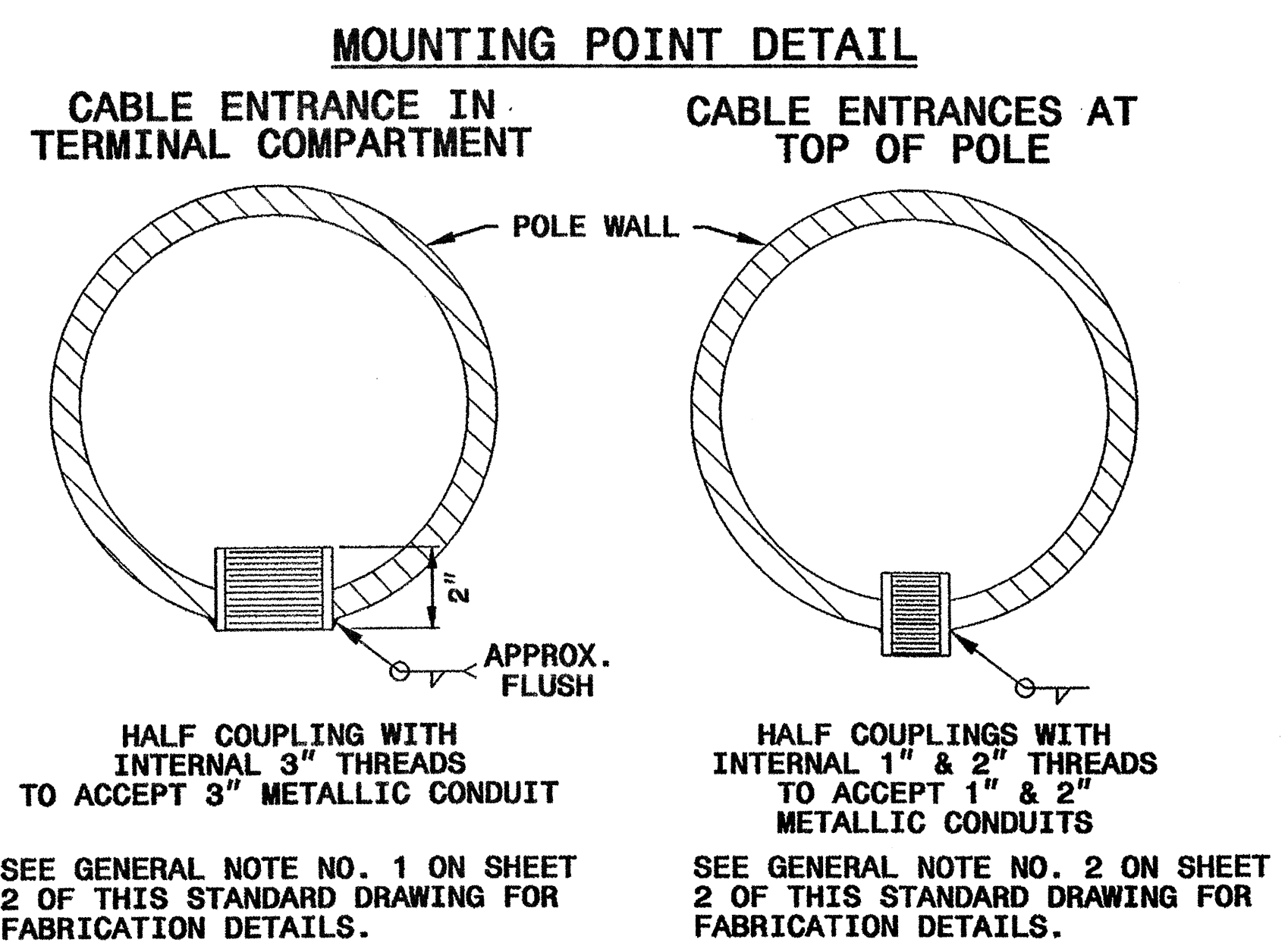


STATE OF NORTH CAROLINA  
 DEPT. OF TRANSPORTATION  
 DIVISION OF HIGHWAYS  
 RALEIGH, N.C.



STATE OF NORTH CAROLINA  
 DEPT. OF TRANSPORTATION  
 DIVISION OF HIGHWAYS  
 RALEIGH, N.C.

ENGLISH STANDARD DRAWING FOR  
**METAL POLES**  
**MISCELLANEOUS DETAILS**

SHEET 3 OF 3  
**1740.01**

SHEET 3 OF 3  
**1740.01**

Structural Engineer  <i>D. Sarker</i> 9/19/2003 <small>SIGNATURE DATE</small>	Electrical Engineer  <i>Milton Dean</i> 9/22/03 <small>SIGNATURE DATE</small>
<b>Standard Drawings</b> Traffic Management and Signal Systems Unit 122 N. McDowell St., Raleigh, NC 27603	
See Plate for Title	
Original: 2002 Standards	

19-SFP-2003 14:27  
 w:\pep\les-uni\hler\krouse\03\Roadway\Standard\dwg\skeng\lshp on sheets\17401 second.dgn  
 pdl exander