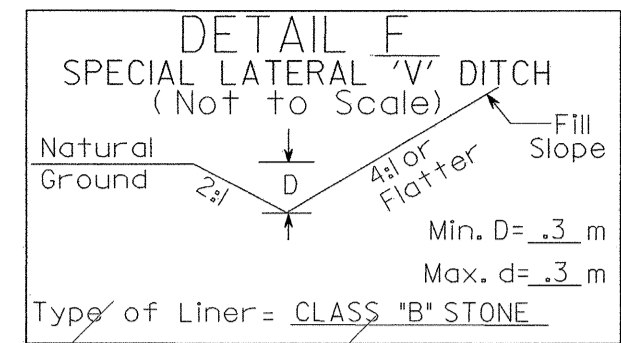
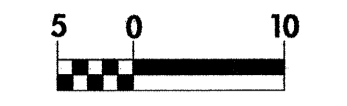


FOR PROFILE OF -L- SEE SHEETS NO. 15 & 16
 FOR PROFILE OF -YI- SEE SHEET NO. 23
 FOR INTERSECTION DETAIL OF -YI- SEE SHEET NO. 2-E



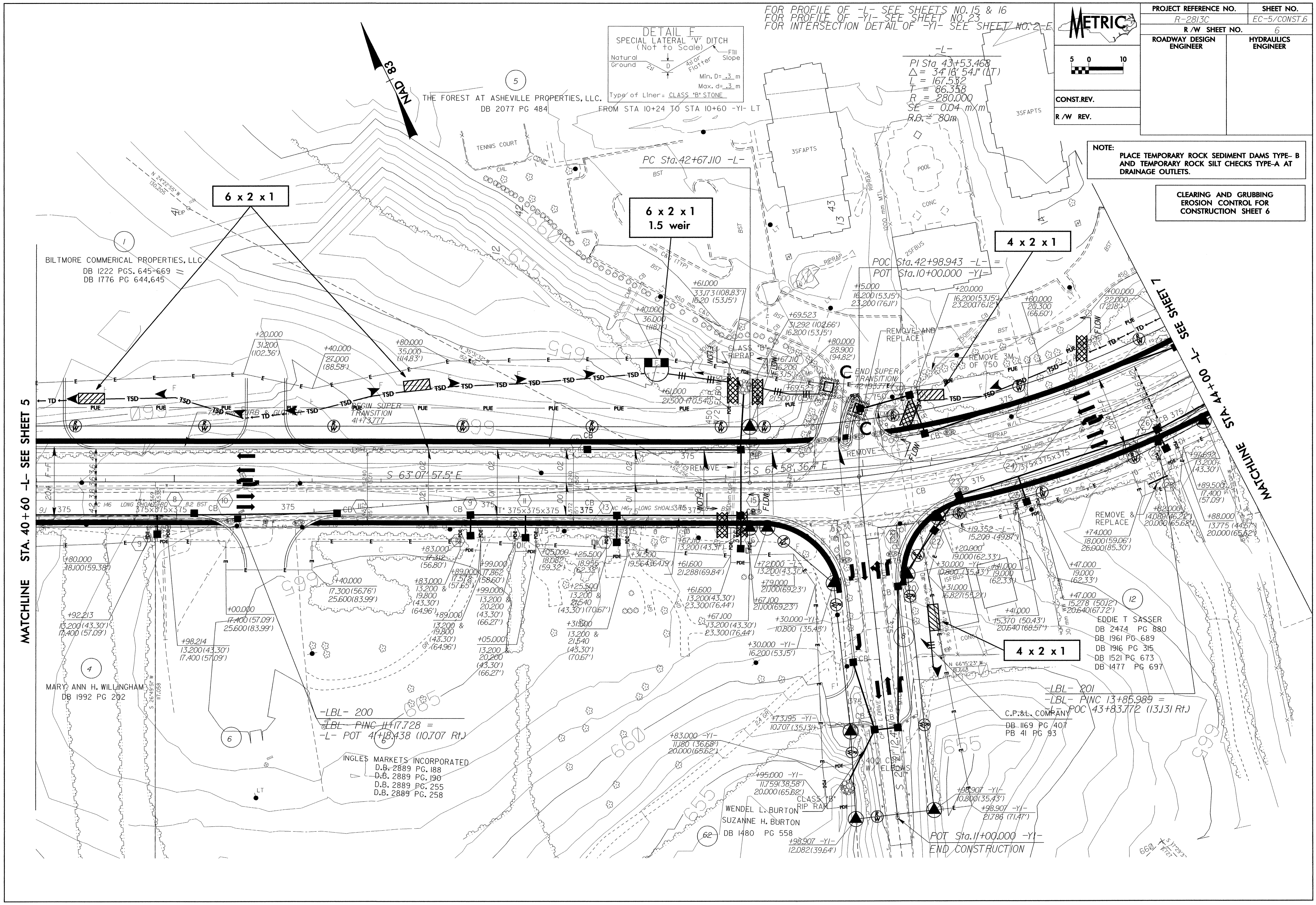
PROJECT REFERENCE NO.	SHEET NO.
R-2813C	EC-5/CONST.6
R/W SHEET NO.	6
ROADWAY DESIGN ENGINEER	HYDRAULICS ENGINEER
CONST. REV.	
R/W REV.	



-L-
 PI Sta. 43+53.468
 $\Delta = 34'10'' (10.41')$
 $L = 167.532$
 $T = 86.358$
 $R = 280.000$
 $SE = 0.04 \text{ m/m}$
 $R.O. = 80 \text{ m}$

NOTE: PLACE TEMPORARY ROCK SEDIMENT DAMS TYPE-B AND TEMPORARY ROCK SILT CHECKS TYPE-A AT DRAINAGE OUTLETS.

CLEARING AND GRUBBING EROSION CONTROL FOR CONSTRUCTION SHEET 6



MATCHLINE STA. 40+60 -L- SEE SHEET 5

MATCHLINE STA. 44+00 -L- SEE SHEET 7

-LBL- 200
 -LBL- PINC 11+17.728 =
 -L- POT 4+18.438 (10.707 Rt.)

4 x 2 x 1

-LBL- 201
 -LBL- PINC 13+85.989 =
 C.P. & L. COMPANY POC 43+83.772 (13.131 Rt.)
 DB 1169 PG 407
 PB 41 PG 93

POT Sta. 11+00.000 -YI-
 END CONSTRUCTION