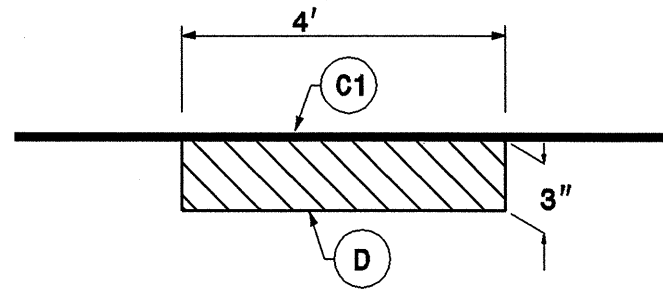


STATE	PROJECT NO.	SHEET NO.	TOTAL SHEETS
N.C.	7CR.10791.6, ETC.	12	16

7CR.10791.6, 7CR.20791.6,
7CR.307914.6, 7CR.307915.6,
7CR.307918.6, 7CR.307920.6,
7CR.307922.6

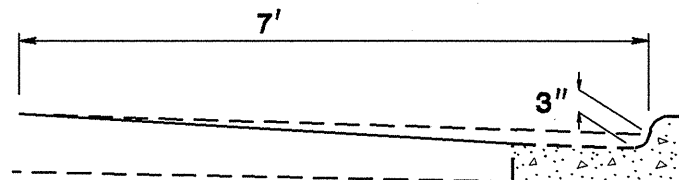
MILLING DETAIL 1



MILL EXISTING ASPHALT PAVEMENT 3" IN DEPTH,
AT LOCATIONS AS DIRECTED BY THE ENGINEER.

NOTE:
TO BE USED IN CONJUNCTION WITH
TS. NO. 1 ON MAPS 1 & 16

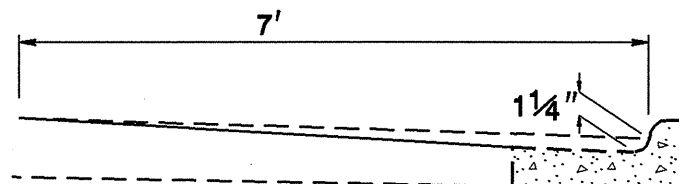
MILLING DETAIL 2



MILL EXISTING ASPHALT PAVEMENT 0-3" AT
LOCATIONS AS DIRECTED BY THE ENGINEER

NOTE:
TO BE USED IN CONJUNCTION WITH
TS. NO. 5 ON MAP 19
TS. NO. 7 & 8 ON MAP 22

MILLING DETAIL 3



MILL EXISTING ASPHALT PAVEMENT 0-1 1/4" AT
LOCATIONS AS DIRECTED BY THE ENGINEER

NOTE:
TO BE USED IN CONJUNCTION WITH
TS. NO. 5 ON MAP 21
T.S. NO. 5 & 6 ON MAP 18

PAVEMENT SCHEDULE

C1	PROP. APPROX. 1 1/2" ASPHALT CONCRETE SURFACE COURSE, TYPE S9.5B, AT AN AVERAGE RATE OF 168 LBS. PER SQ. YD.	F	ASPHALT SURFACE TREATMENT, NO. 78M STONE	
C2	PROP. APPROX. 1" ASPHALT CONCRETE SURFACE COURSE, TYPE SF9.5A, AT AN AVERAGE RATE OF 110 LBS. PER SQ. YD.	R1	EXISTING 2-6 CURB AND GUTTER	R2 EXISTING ASPHALT CURB
C3	PROP. APPROX. 1 1/4" ASPHALT CONCRETE SURFACE COURSE, TYPE S9.5B, AT AN AVERAGE RATE OF 140 LBS. PER SQ. YD.	U	EXISTING PAVEMENT.	T EARTH MATERIAL.
D	ASPHALT CONCRETE INTERMEDIATE COURSE, TYPE I19.0B, AT AN AVERAGE RATE OF 342 LBS. PER SQ. YD.			

SYSTEMS
