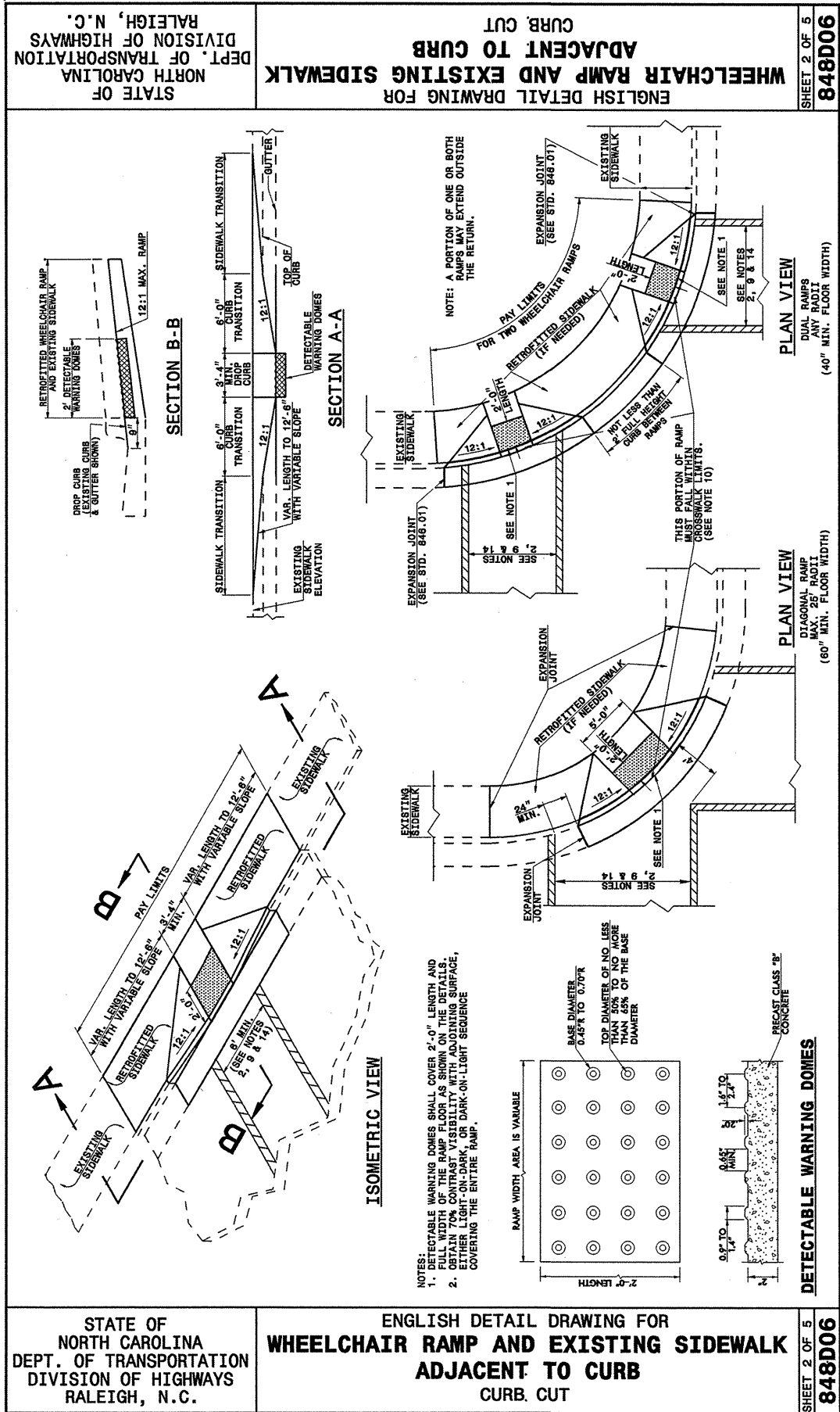
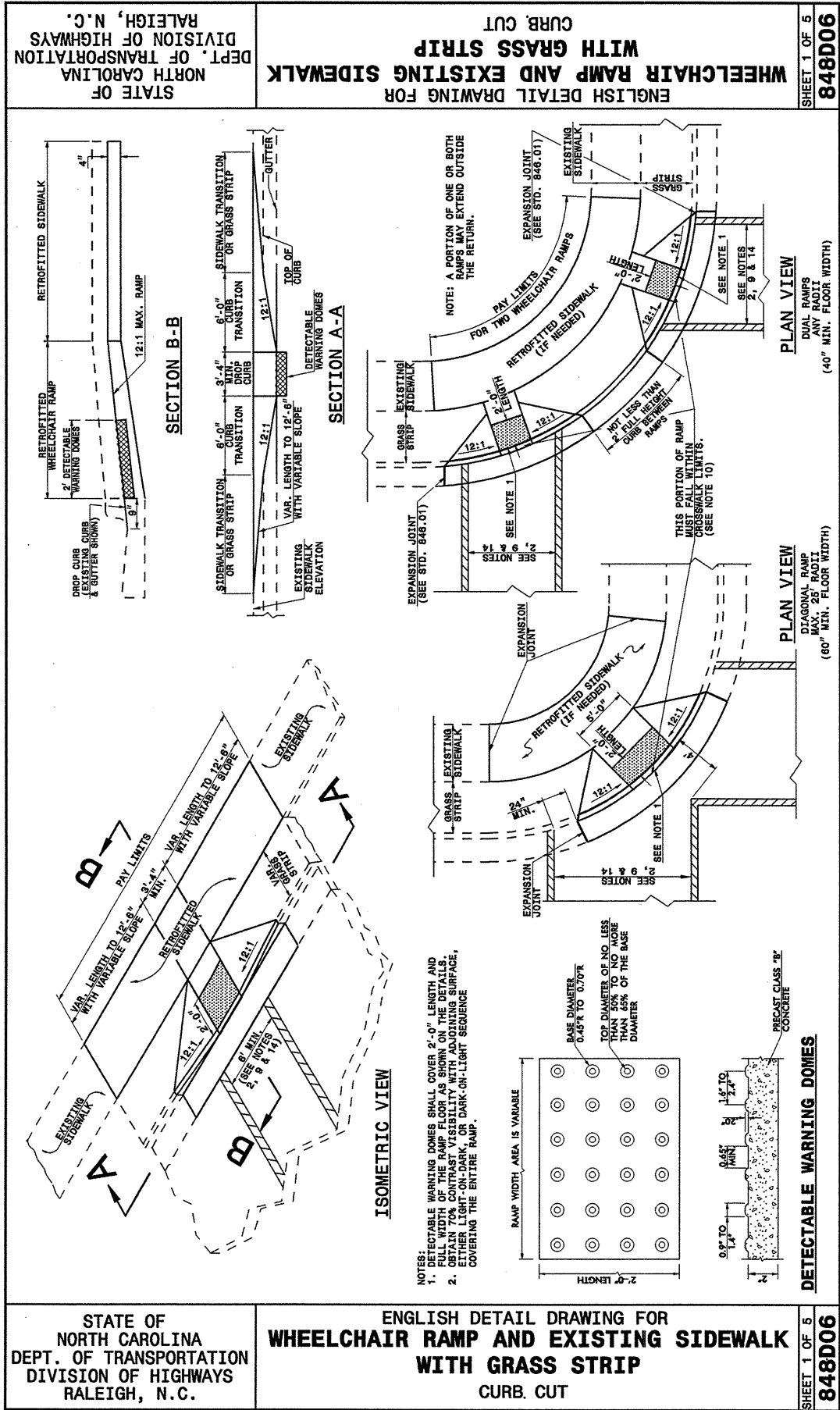


12-SEP-2005 14:07
 C:\projects\Special Details\verward\stds\02\Stds to Special Details\english\84806\084806.dgn
 84806.dwg
 15222293



STATE OF NORTH CAROLINA
 DEPT. OF TRANSPORTATION
 DIVISION OF HIGHWAYS
 RALEIGH, N.C.

ENGLISH DETAIL DRAWING FOR
WHEELCHAIR RAMP AND EXISTING SIDEWALK WITH GRASS STRIP
 CURB CUT

SHEET 1 OF 5
848D06

STATE OF NORTH CAROLINA
 DEPT. OF TRANSPORTATION
 DIVISION OF HIGHWAYS
 RALEIGH, N.C.

ENGLISH DETAIL DRAWING FOR
WHEELCHAIR RAMP AND EXISTING SIDEWALK ADJACENT TO CURB
 CURB CUT

SHEET 2 OF 5
848D06

PROJECT SERVICES UNIT
 STANDARDS AND SPECIAL DESIGN
 Office 919-250-4128 FAX 919-250-4119

SEE PLATE FOR TITLE

ORIGINAL BY: DETAIL 848D05 DATE:
 MODIFIED BY: E. E. WARD DATE: 09-06-05
 CHECKED BY: DATE:
 FILE SPEC.: /usr/stds/02todetail/english/84806/848d06.dgn