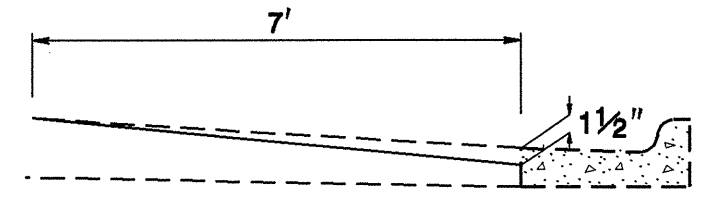


STATE	PROJECT NO.	SHEET NO.	TOTAL SHEETS
N.C.	7CR.10681.4, ETC	7	

7CR.10681.4, 7CR.20681.4,
7CR.306802.4, 7CR.306803.4,
7CR.306811.4

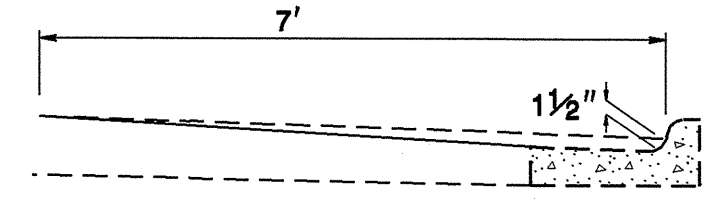
MILLING DETAIL 1



MILL EXISTING ASPHALT PAVEMENT 0-1 1/2" AT LOCATIONS AS DIRECTED BY THE ENGINEER

NOTE:
TO BE USED IN CONJUNCTION WITH
TS. NO. 3, 4 ON MAP 5, 8 & 10
T.S. NO. 4 - 6 ON MAP 7

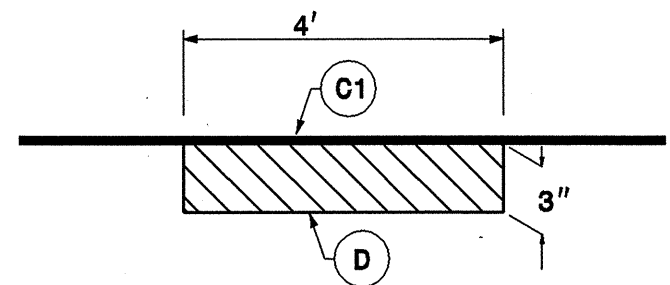
MILLING DETAIL 4



MILL EXISTING ASPHALT PAVEMENT 0-1 1/2" AT LOCATIONS AS DIRECTED BY THE ENGINEER

NOTE:
TO BE USED IN CONJUNCTION WITH
TS. NO. 5 & 6 ON MAP 7,
TS. NO. 5 ON MAP 9

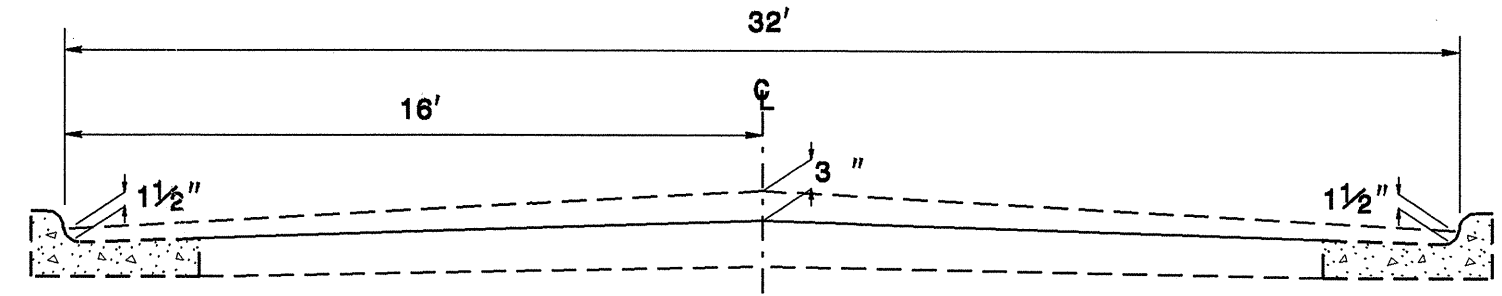
MILLING DETAIL 2



MILL EXISTING ASPHALT PAVEMENT 3" IN DEPTH, AT LOCATIONS AS DIRECTED BY THE ENGINEER.

NOTE:
TO BE USED IN CONJUNCTION WITH
TS. NO. 5 ON MAP 6
T.S. NO 5 ON MAP 9

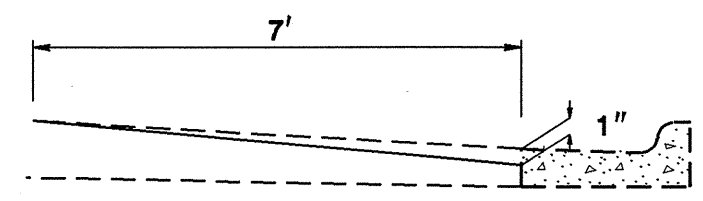
MILLING DETAIL 5



MILL EXISTING ASPHALT PAVEMENT 1 1/2" - 3" AT LOCATIONS AS DIRECTED BY THE ENGINEER

NOTE:
TO BE USED IN CONJUNCTION WITH
TS. NO. 5 ON MAP 6

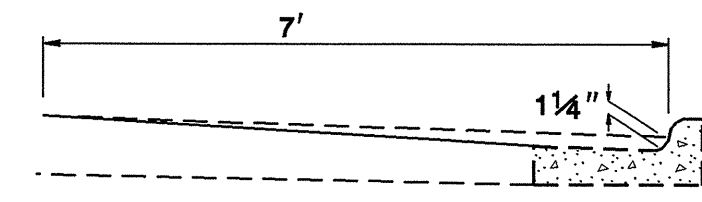
MILLING DETAIL 3



MILL EXISTING ASPHALT PAVEMENT 0-1" AT LOCATIONS AS DIRECTED BY THE ENGINEER

NOTE:
TO BE USED IN CONJUNCTION WITH
TS. NO. 7 ON MAP 11

MILLING DETAIL 6



MILL EXISTING ASPHALT PAVEMENT 0-1 1/4" AT LOCATIONS AS DIRECTED BY THE ENGINEER

NOTE:
TO BE USED IN CONJUNCTION WITH
TS. NO. 5 ON MAP 7 & 9

SYSTEMS ENGINEERING
 CONSULTANTS
 INC.
 10000
 WILSON
 AVENUE
 SUITE 100
 FORT WORTH, TEXAS 76102
 (817) 339-9900
 FAX (817) 339-9901
 WWW.SYSTEMS-ENGINEERING.COM