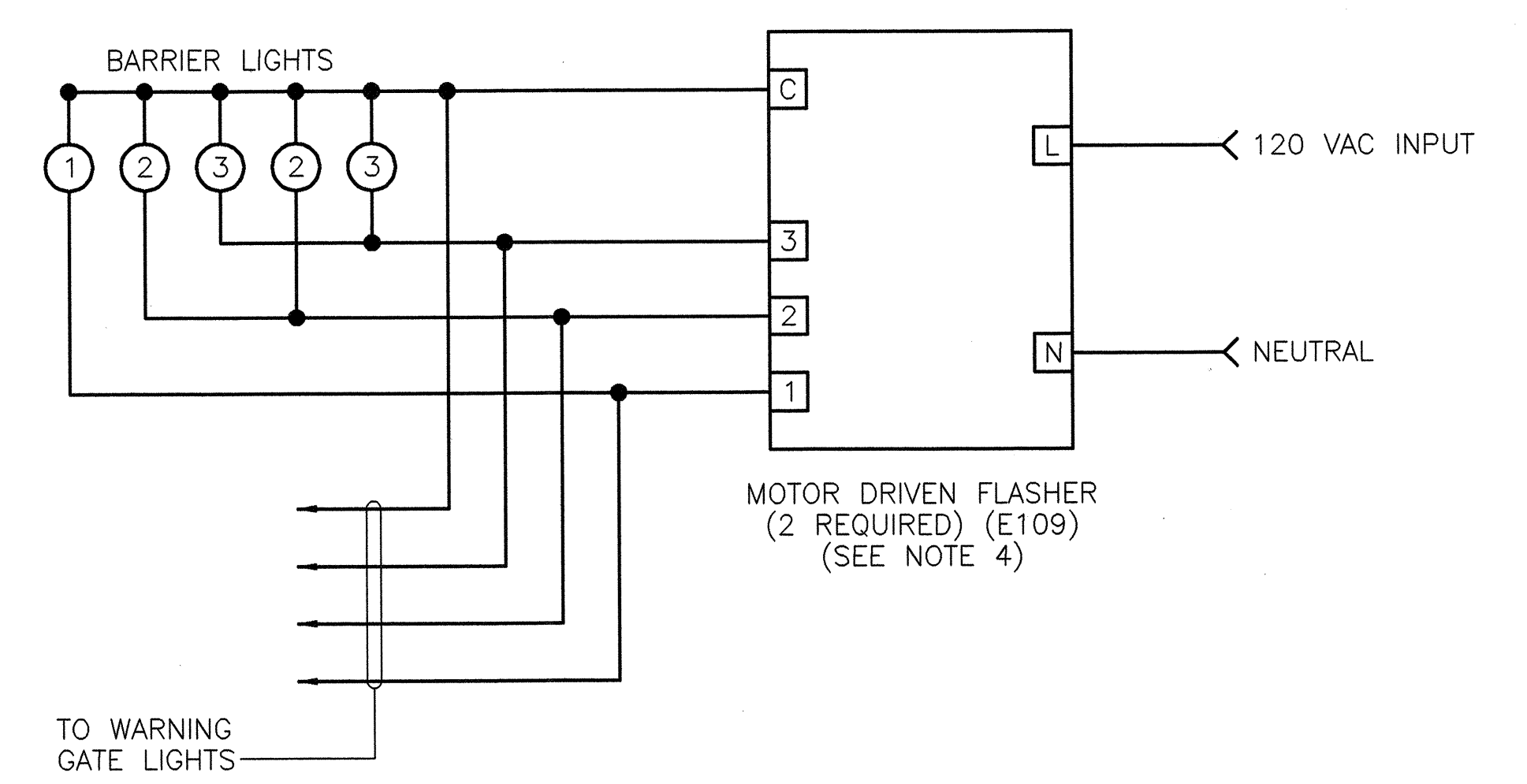


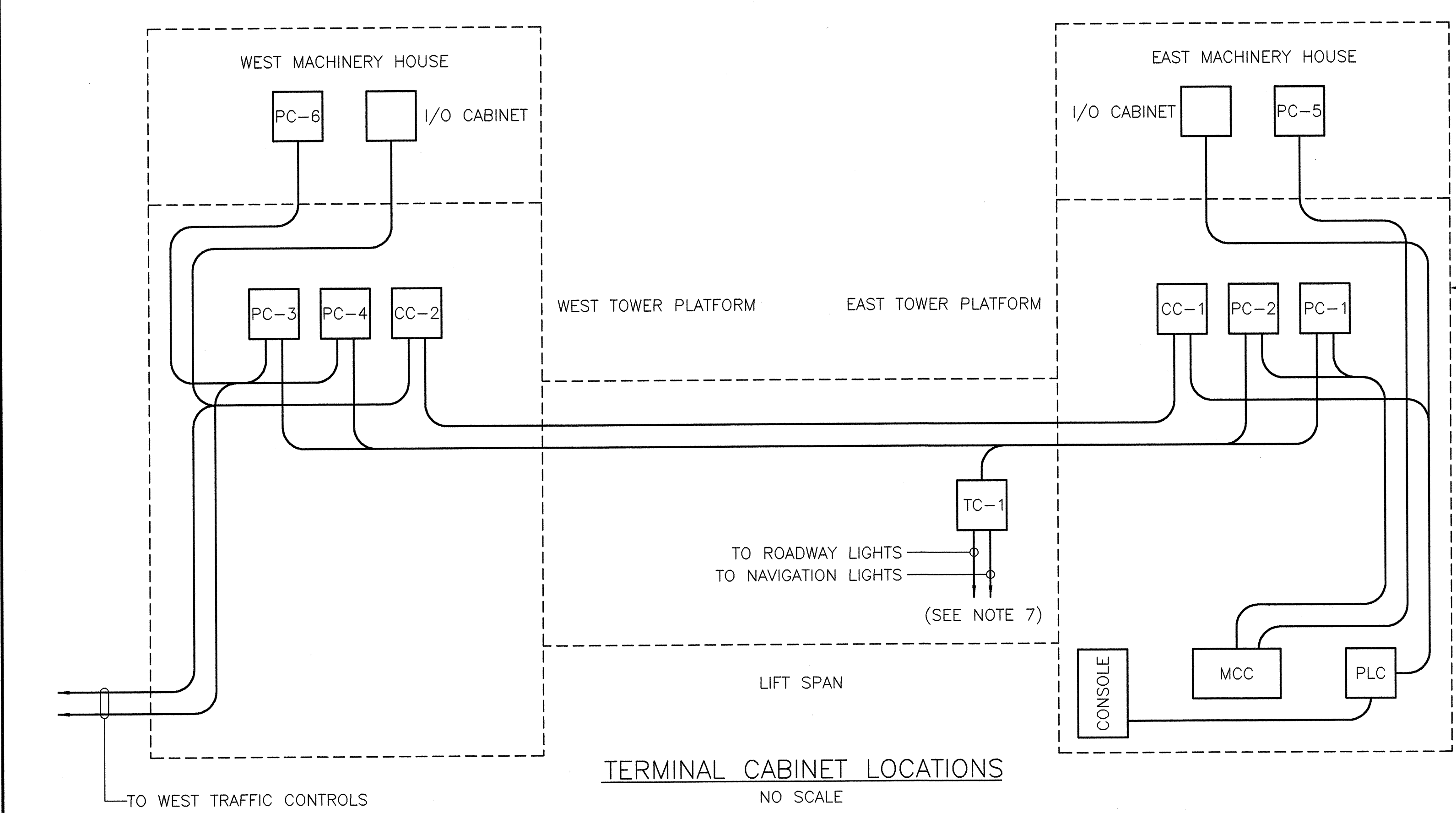
NEW WIRING TO TRAFFIC CONTROL DEVICES
NO SCALE
(WEST APPROACH SHOWN, EAST APPROACH SIMILAR)

LEGEND

- 1 - STEADY BURN (END OF GATE ARM)
 - 2 - ALTERNATE FLASH CIRCUIT A
 - 3 - ALTERNATE FLASH CIRCUIT B
- FUSES NOT SHOWN (SEE NOTE 5)



TYPICAL, EAST AND WEST APPROACHES
NO SCALE

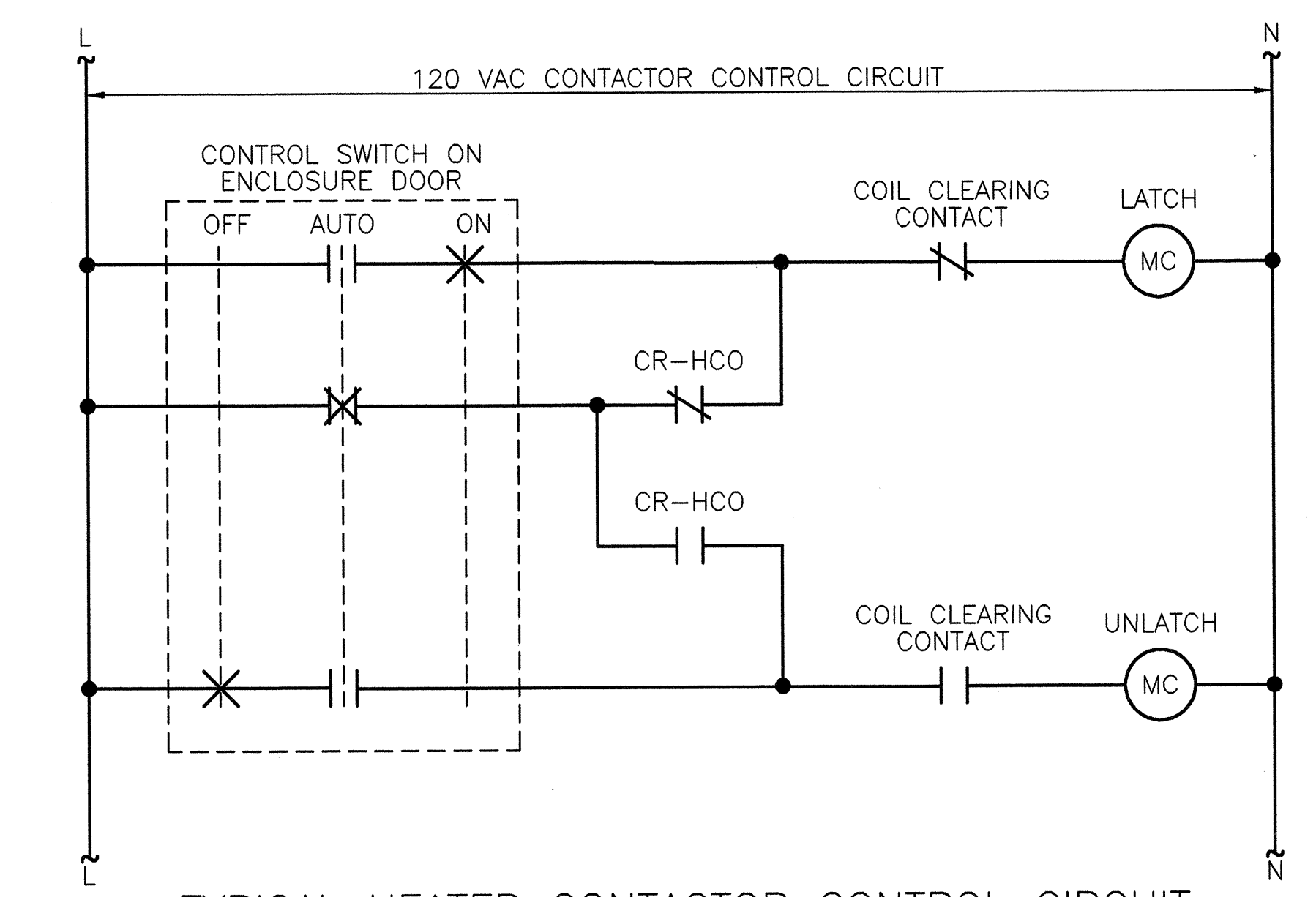


TERMINAL CABINET LOCATIONS
NO SCALE

EXISTING POWER CIRCUITS TO EAST MACHINERY HOUSE ARE UNCHANGED, NOT SHOWN

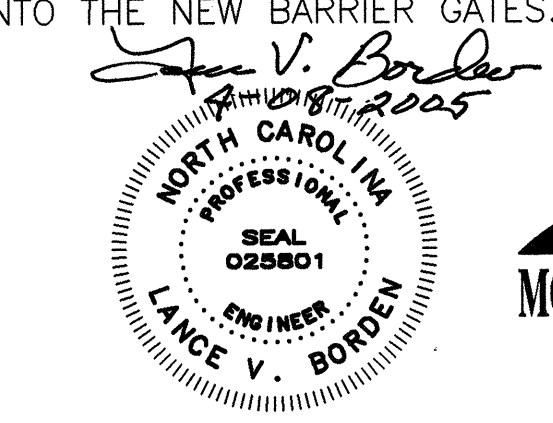
NOTES:

1. REMOVE AND REPLACE CONDUCTORS TO ALL TRAFFIC CONTROL DEVICES ON EAST AND WEST APPROACHES.
2. REPAIR CONDUIT, FITTINGS AND JUNCTION BOXES AS MAY BE REQUIRED.
3. REPLACE JUNCTION BOX ON TOP OF EAST PIER (1E).
4. INSTALL TWO NEW MOTOR DRIVEN FLASHERS IN ELECTRICAL ROOM, EAST TOWER.
5. INSTALL NEW 5A IN-LINE FUSES IN WARNING LIGHT CIRCUITS AT GATES AND BARRIERS.
6. INSTALL 15A, 120V GFI RECEPTACLE IN EXISTING WARNING GATE HOUSINGS.
7. POWER TO ALL LIFT SPAN DEVICES SHALL BE RECIRCUITED THROUGH THE AERIAL CABLE. EXISTING CABLE REEL AND ASSOCIATED WIRING TO BE REMOVED.
8. INSTALL NEW 2" RIGID STEEL CONDUIT FROM OLD BARRIER GATE LOCATIONS INTO THE NEW BARRIER GATES.



TYPICAL HEATER CONTACTOR CONTROL CIRCUIT
NO SCALE

CC - CONTROL CIRCUITS
PC - POWER CIRCUITS
TC - TERMINAL CABINETS



STATE OF NORTH CAROLINA			
DEPARTMENT OF TRANSPORTATION			
RALEIGH			
CAPE FEAR RIVER CROSSING			
WILMINGTON, NORTH CAROLINA			
TRAFFIC CONTROLS WIRING, TERMINAL CABINET LOCATIONS			
DESIGNED G.L. FASICK		DRAWN BY R.L. REED	
CHECKED L.R. BAKER		SCALE NONE	
DETAILED R.L. REED		DATE APRIL, 2005	
CHECKED G.L. FASICK		DRAWING NO. 9 OF 53	