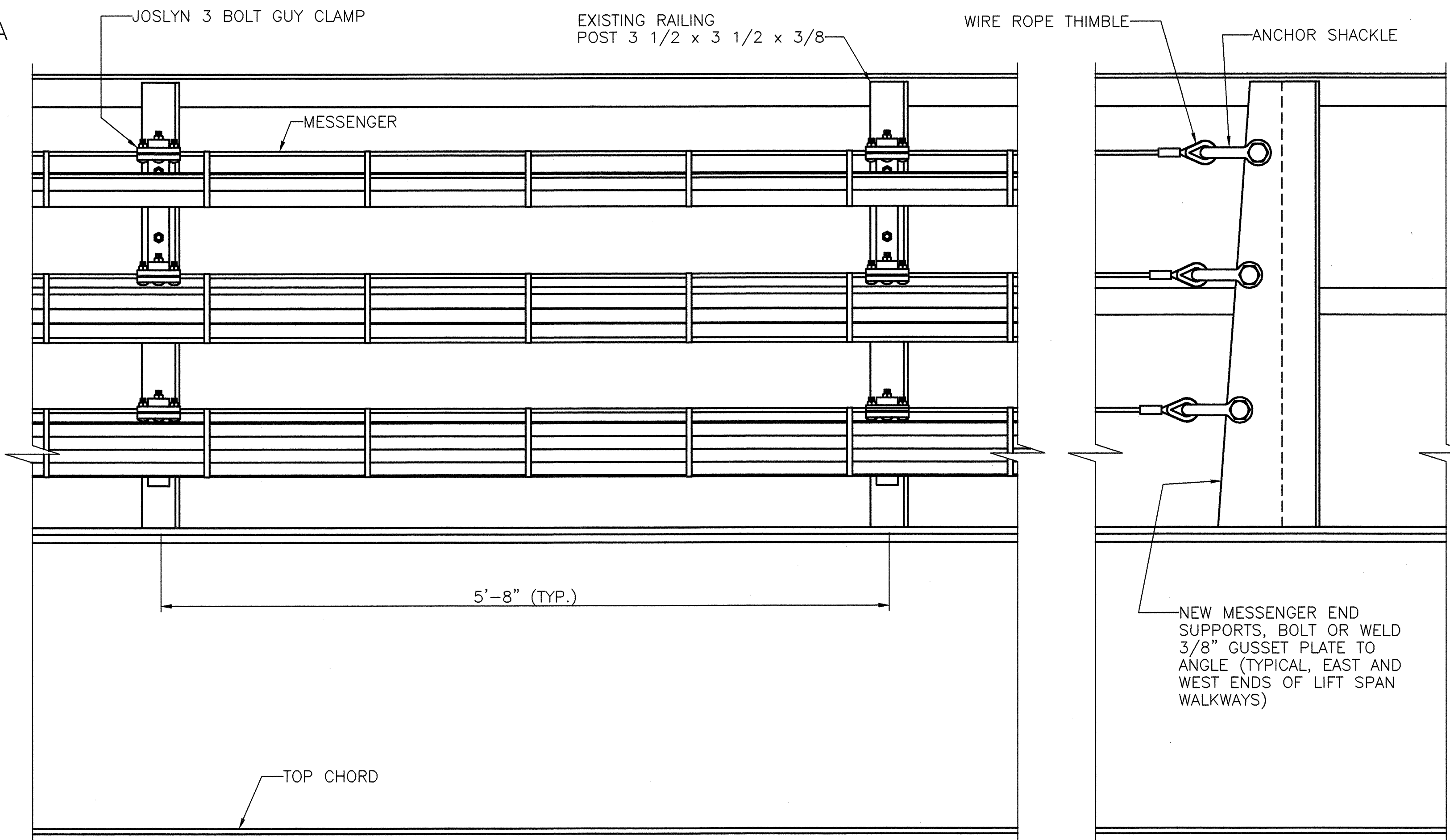
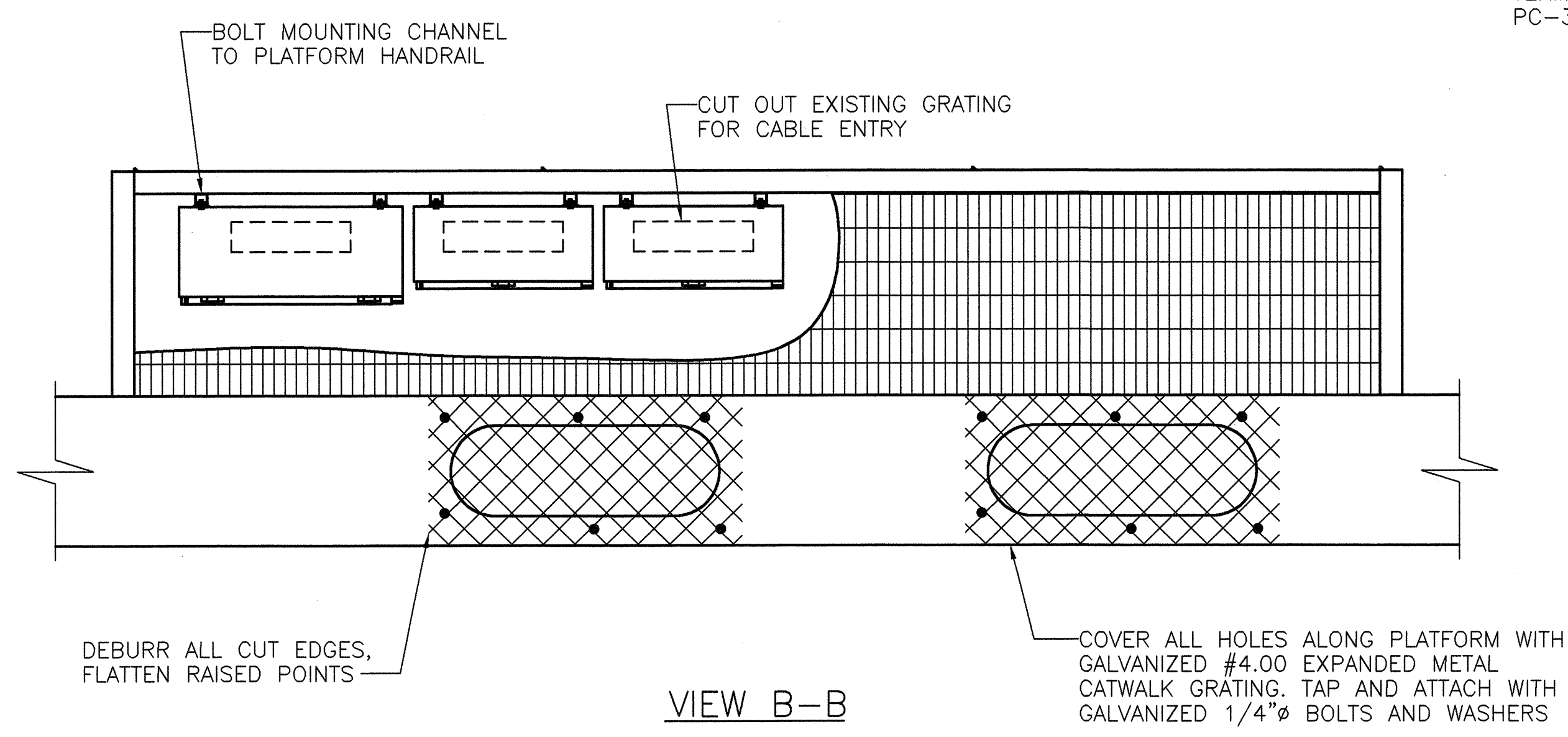


VIEW A-A
SCALE: 1 1/2" = 1'-0"

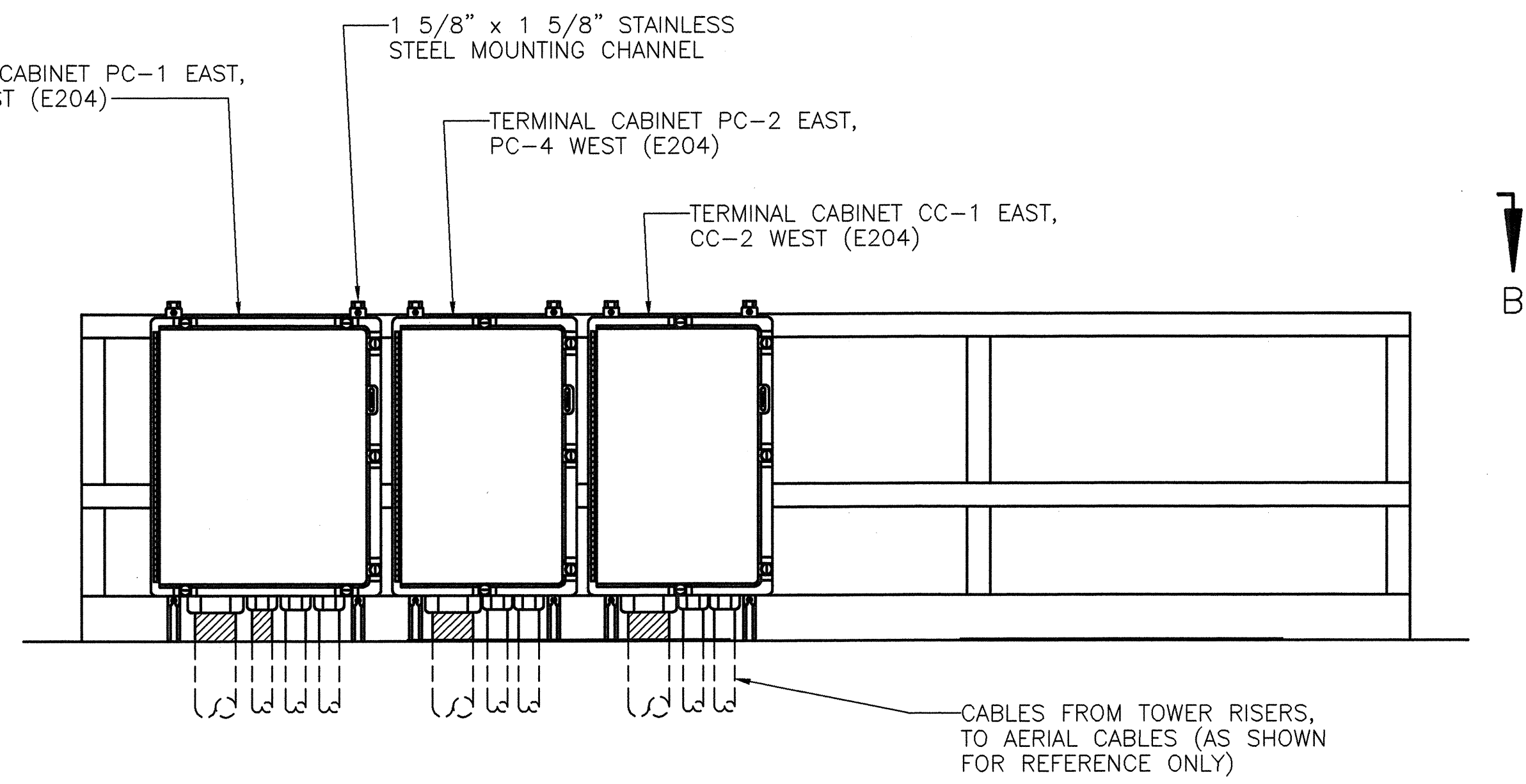


CABLE SUPPORT DETAIL ON LIFT SPAN
SCALE: 1 1/2" = 1'-0"

- NOTES:
1. ALL CABLE SUPPORT COMPONENTS SHALL BE CORROSION RESISTANT.
 2. MESSENGER SUPPORT BAR MATERIAL TO BE HOT-DIP GALVANIZED.
 3. TERMINAL CABINETS SHALL BE PERMANENTLY LABELED WITH THE CABINET DESIGNATION (CC-1, ETC.) ALL CABINETS SHALL INCLUDE WARNING SIGN "DANGER, 480 VOLTS, KEEP OUT".
 4. POWER AND CONTROL CABLES TO BE GROUPED SEPARATELY.



VIEW B-B
TERMINAL CABINETS AT TOWER PLATFORMS
SCALE: 3/4" = 1'-0"



ELEVATION

Lance V. Borjen
2005

PROFESSIONAL ENGINEER
NORTH CAROLINA
SEAL 025801
LANCE V. BORJEN

MODJESKI and MASTERS
INCORPORATED
4809 LOUISE DRIVE
MECHANICSBURG, PA 17055

CENTURY SOUTHERN, INC.
2811 REIDVILLE ROAD, STE 2
SPARTANBURG, SC 29301

| | | | |
|------------------------------|-------------|-------------|-------------|
| STATE OF NORTH CAROLINA | | | |
| DEPARTMENT OF TRANSPORTATION | | | |
| RALEIGH | | | |
| CAPE FEAR RIVER CROSSING | | | |
| WILMINGTON, NORTH CAROLINA | | | |
| AERIAL CABLE DETAILS | | | |
| DESIGNED | G.L. FASICK | DATE | APRIL, 2005 |
| CHECKED | L.R. BAKER | DRAWING NO. | 43 OF 53 |
| DRAWN BY | R.L. REED | SCALE | AS NOTED |
| CHECKED | G.L. FASICK | DATE | APRIL, 2005 |