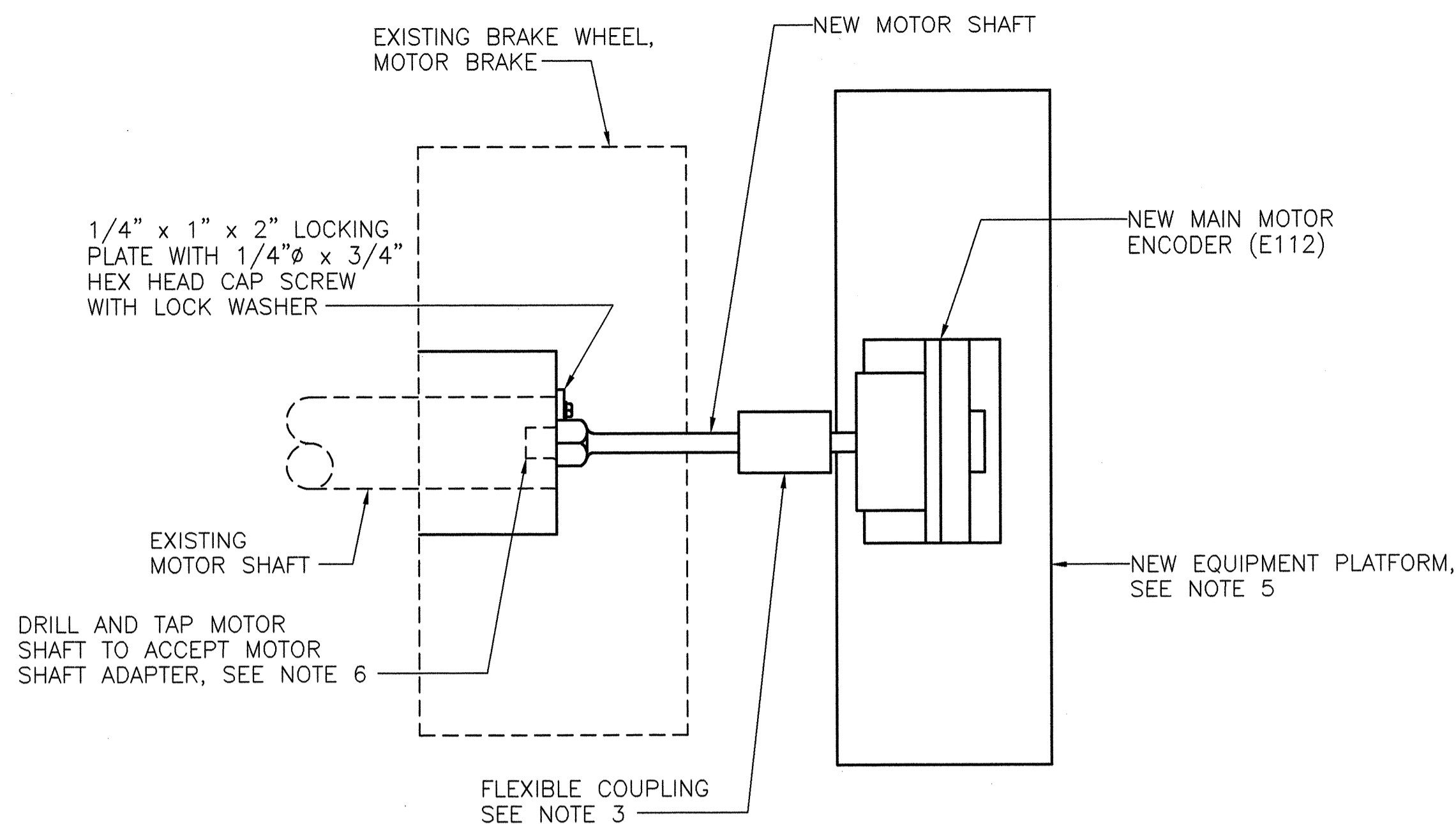
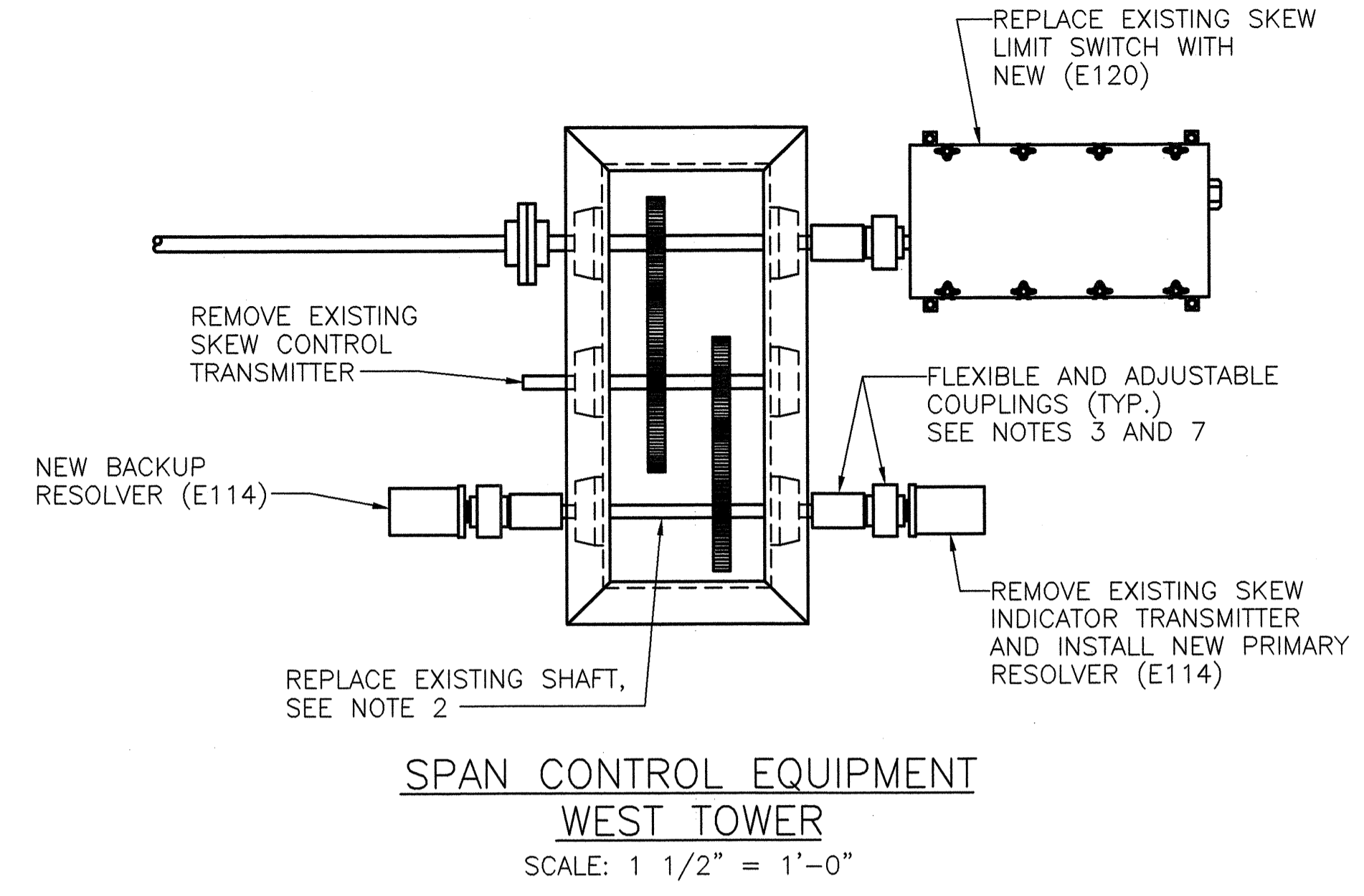


NORTHEAST AND NORTHWEST MOTORS

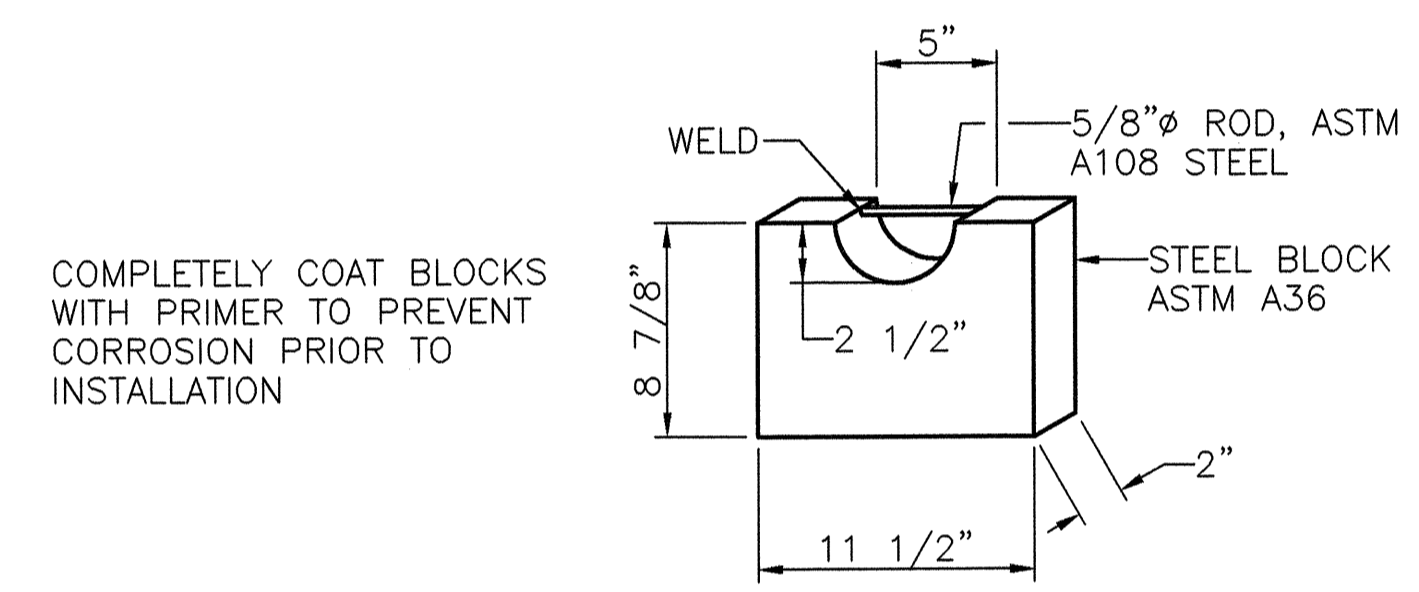


SOUTHEAST AND SOUTHWEST MOTORS



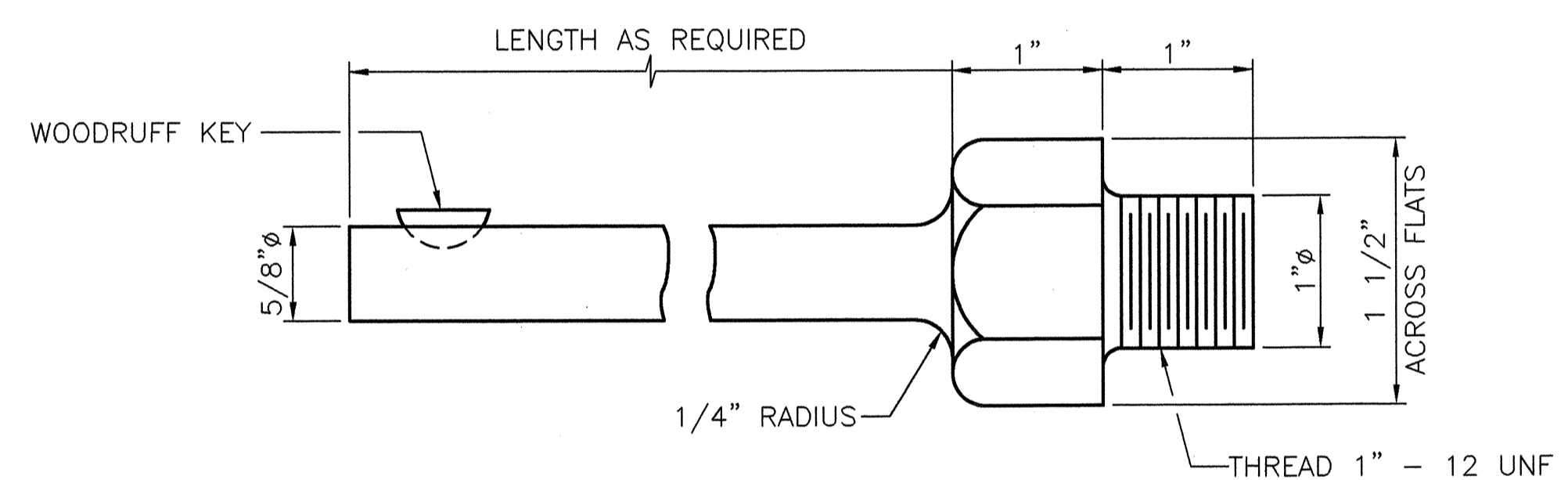
MOTOR ENCODERS DETAILS

SCALE: 3" = 1'-0"



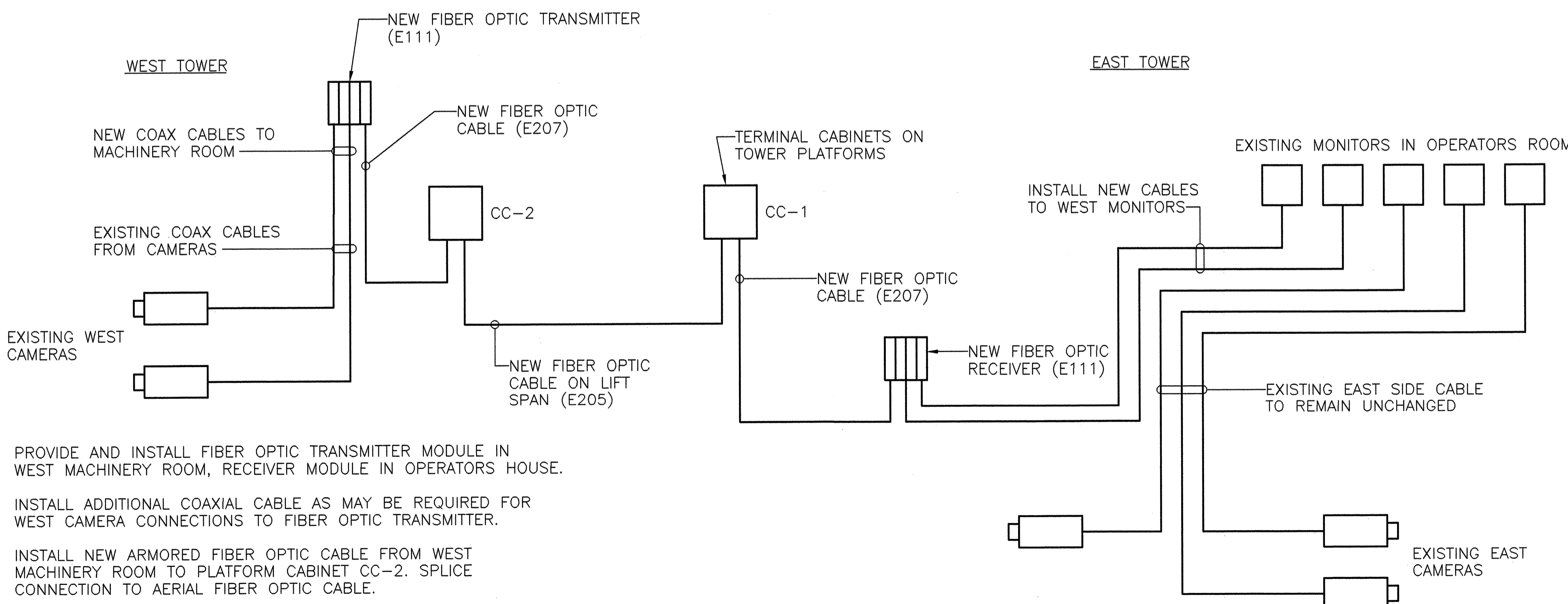
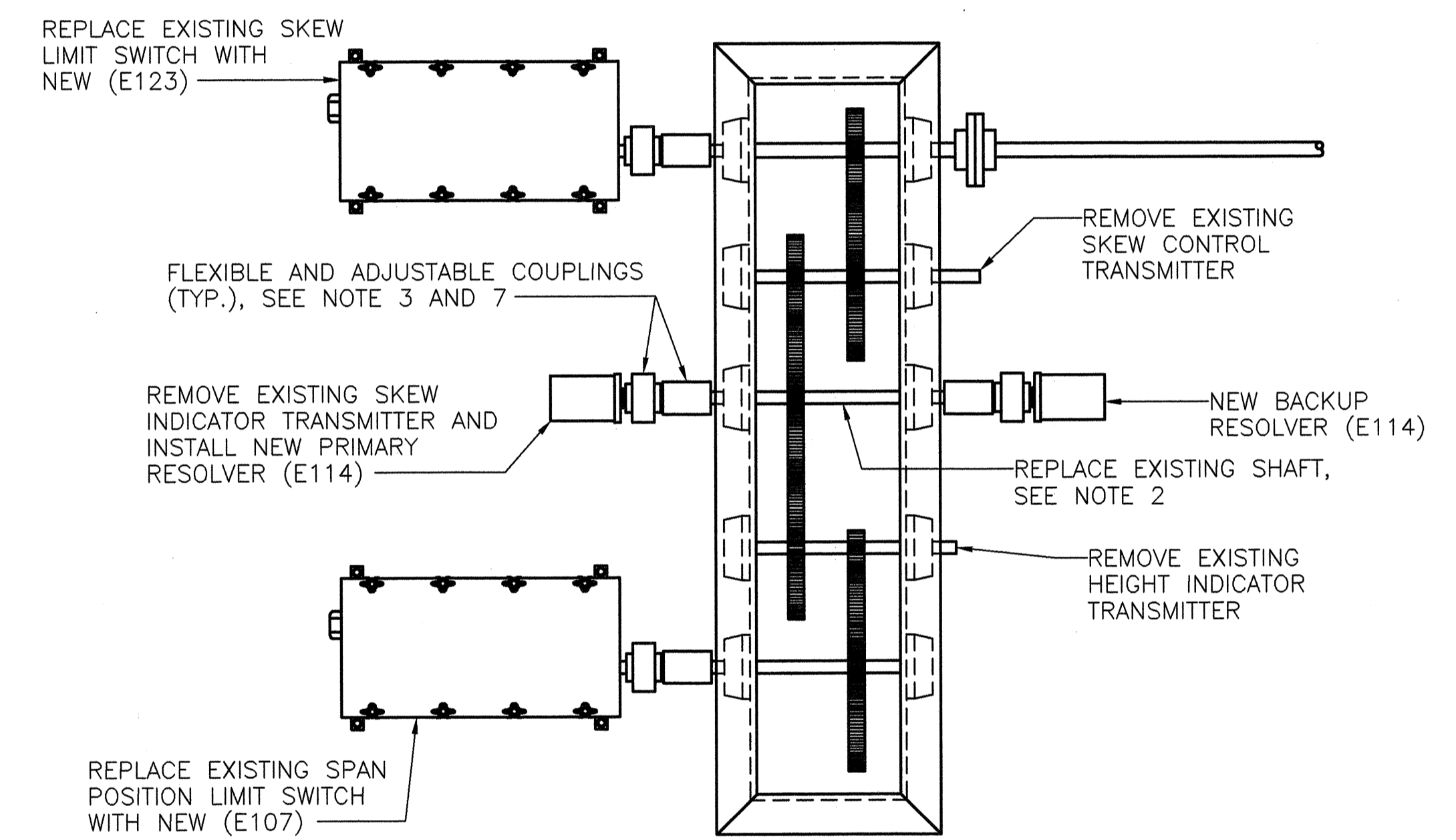
NEW STEEL COUNTERWEIGHT BLOCK

SCALE: 1 1/2" = 1'-0"  
800 NEW STEEL BLOCKS REQUIRED



MOTOR SHAFT ADAPTER

SCALE: 1" = 1"



FIBER OPTIC VIDEO TRANSMISSION SYSTEM

NO SCALE

NOTES:

- ALL SPAN CONTROL DEVICES SHALL INCLUDE ALL MOUNTING PROVISIONS, ACCESSORIES, AND MISCELLANEOUS HARDWARE NECESSARY FOR PROPER INSTALLATION.
- REPLACE EXISTING SHAFT ON EXISTING GEAR LG3 WITH NEW DOUBLE EXTENSION STAINLESS STEEL SHAFT TO FACILITATE INSTALLATION OF NEW RESOLVERS.
- FLEXIBLE COUPLINGS SHALL BE STAINLESS STEEL HELICAL-BEAM TYPE WITH INTEGRAL CLAMP, SUCH AS HELICAL PRODUCTS COMPANY MC7C OR APPROVED EQUAL.
- MODIFY EXISTING, OR INSTALL NEW, SPAN CONTROL EQUIPMENT PLATFORMS AS NECESSARY FOR MOUNTING NEW DEVICES. NEW WORK SHALL BE OF SIMILAR CONSTRUCTION TO EXISTING PLATFORMS AND PAINTED TO MATCH EXISTING.
- EQUIPMENT PLATFORM SHALL BE SUPPORTED FROM MOTOR BRAKE SUPPORT FRAME. AVOID INTERFERENCE WITH PERSONNEL LADDER.
- MOTOR SHAFT ADAPTER MUST RUN CONCENTRIC WITH MOTOR SHAFT C/L WITHIN 0.003" T.I.R.
- HAND ROTATABLE, ROTATIONAL INDEXER SHALL PROVIDE 100:1 ADJUSTMENT OF SHAFT POSITION AS MANUFACTURED BY HARMONIC DRIVE TECHNOLOGIES, TYPE HDI, OR ACCEPTED EQUAL.

PROVIDE AND INSTALL FIBER OPTIC TRANSMITTER MODULE IN WEST MACHINERY ROOM, RECEIVER MODULE IN OPERATORS HOUSE.

INSTALL ADDITIONAL COAXIAL CABLE AS MAY BE REQUIRED FOR WEST CAMERA CONNECTIONS TO FIBER OPTIC TRANSMITTER.

INSTALL NEW ARMORED FIBER OPTIC CABLE FROM WEST MACHINERY ROOM TO PLATFORM CABINET CC-2. SPLICE CONNECTION TO AERIAL FIBER OPTIC CABLE.

INSTALL NEW ARMORED FIBER OPTIC CABLE FROM CC-1 TO FIBER OPTIC RECEIVER IN OPERATORS HOUSE.

INSTALL NEW COAXIAL CABLES FROM NEW RECEIVER MODULE TO EXISTING MONITORS.

Professional Engineer Seal for Lance V. Borden, State of North Carolina, License No. 025601, dated 4-28-2005.

MODJESKI and MASTERS, INCORPORATED, 4909 LOUISE DRIVE, MECHANICSBURG, PA 17055

CENTURY SOUTHERN, INC., 2811 REEDVILLE ROAD, STE 2, SPARTANBURG, SC 29301

STATE OF NORTH CAROLINA			
DEPARTMENT OF TRANSPORTATION			
RALEIGH			
CAPE FEAR RIVER CROSSING			
WILMINGTON, NORTH CAROLINA			
MISCELLANEOUS ELECTRICAL			
DETAILS - 1			
DESIGNED	G.L. FASICK	DATE	APRIL, 2005
CHECKED	N.E. ALGER	DRAWING NO.	45 OF 53
DRAWN BY	R.L. REED	SCALE	AS NOTED
DETAILED	R.L. REED	DATE	APRIL, 2005
CHECKED	G.L. FASICK	DRAWING NO.	45 OF 53