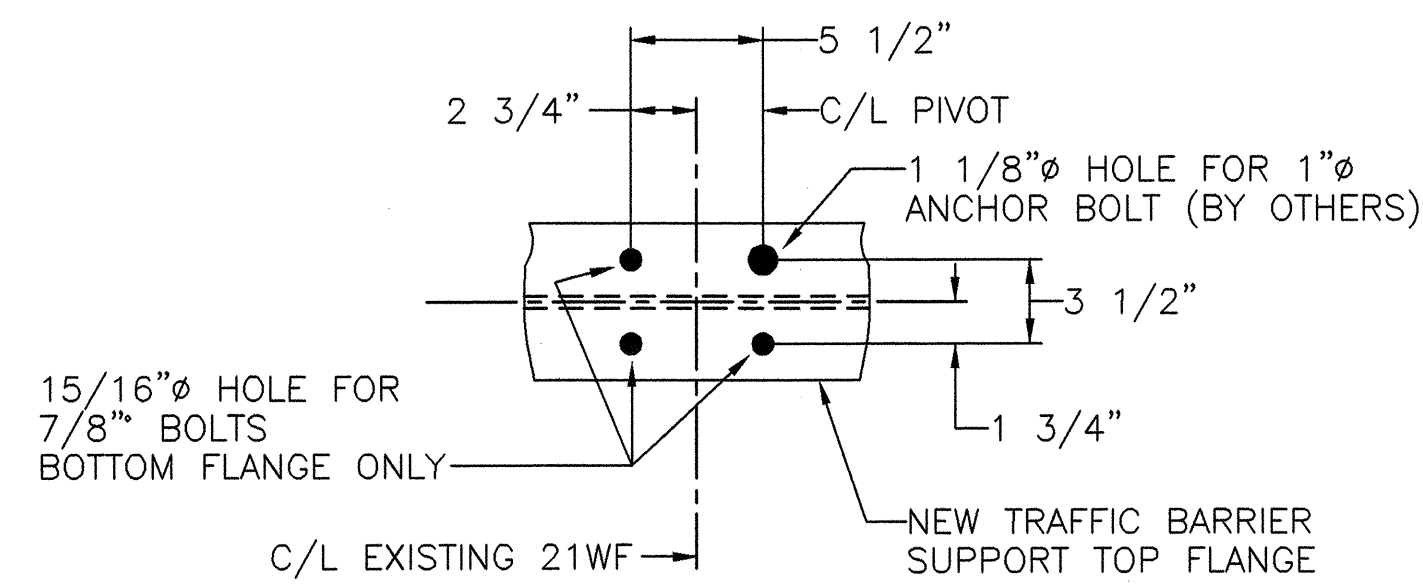
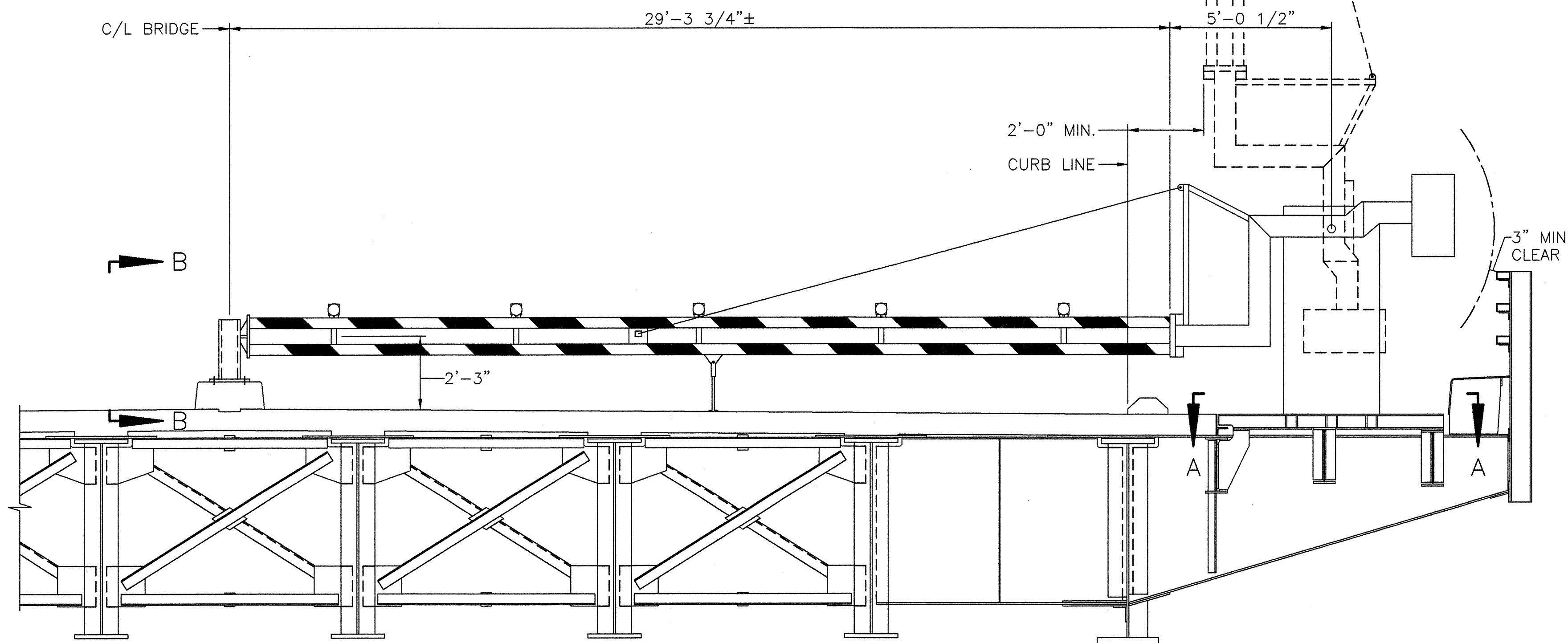


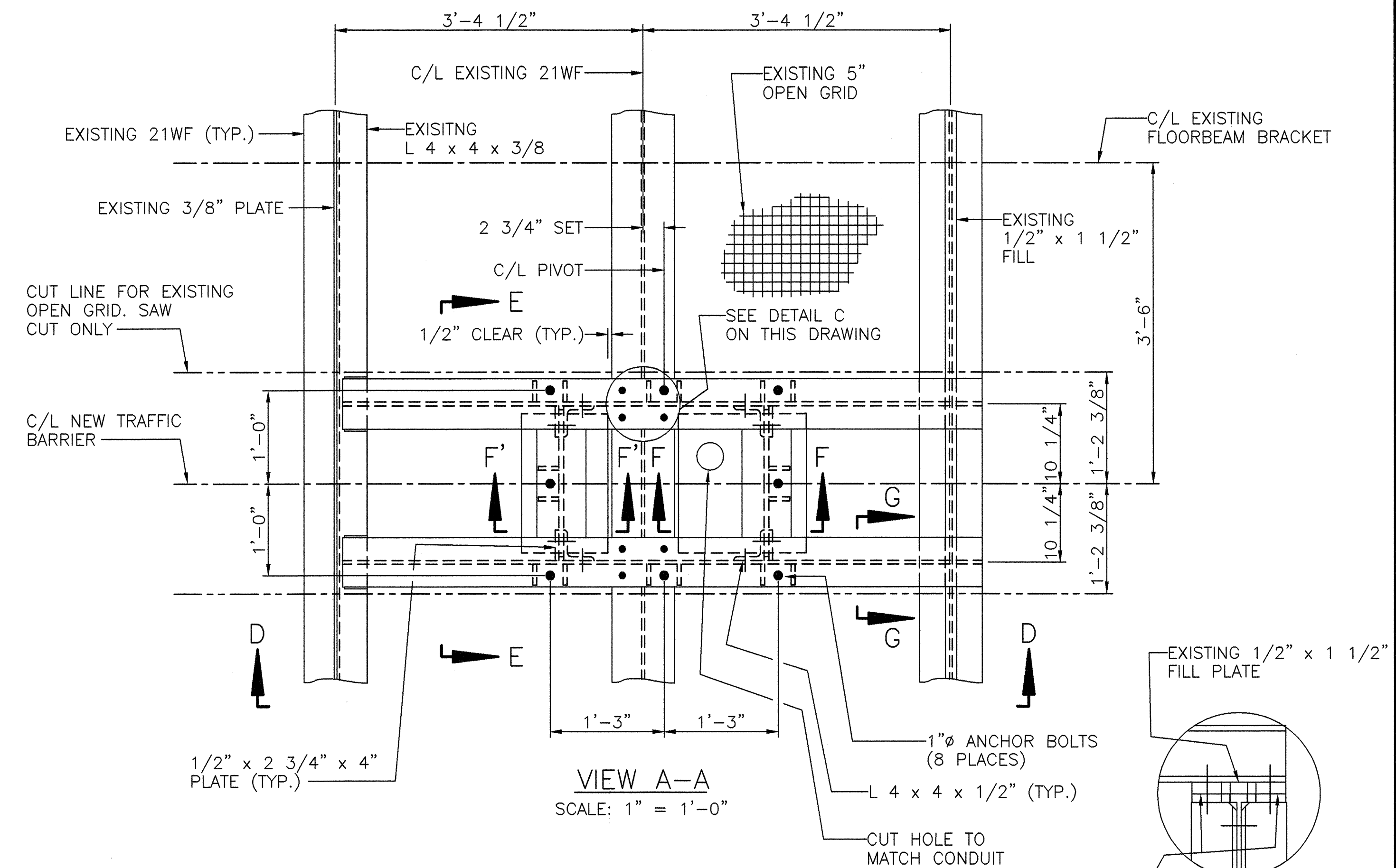
SECTION E-E
SCALE: 1" = 1'-0"



DETAIL C
SCALE: 1 1/2" = 1'-0"

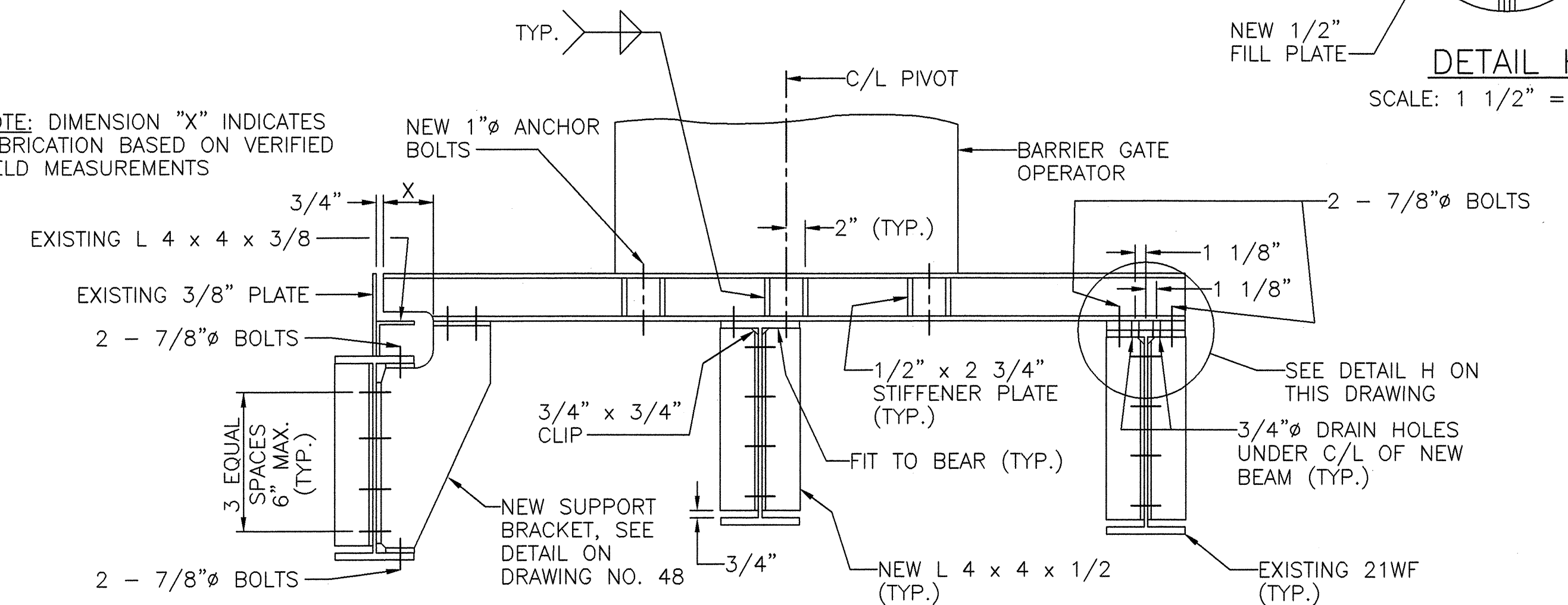


TRAFFIC BARRIER MOUNTING DETAIL
SCALE: 3/8" = 1'-0"



VIEW A-A
SCALE: 1" = 1'-0"

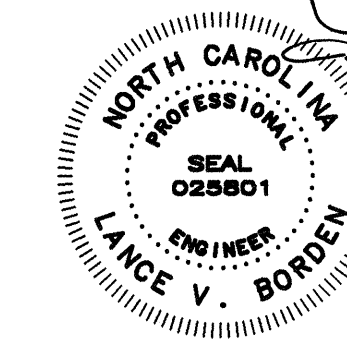
NOTE: DIMENSION "X" INDICATES FABRICATION BASED ON VERIFIED FIELD MEASUREMENTS



SECTION D-D
SCALE: 1" = 1'-0"

NOTES:

1. PROVIDE 7/8 INCH DIAMETER A325 BOLTS.
2. PROVIDE STRUCTURAL STEEL CONFORMING TO A709-GR36.
3. SAW CUT AND REMOVE THE EXISTING OPEN GRID, WITHIN THE LIMITS SHOWN, USING AIR-ARC PROCEDURES. RETAIN THIS PIECE OF GRID AND MODIFY AS REQUIRED TO FILL IN AROUND THE OPERATOR.
4. EMBED ADHESIVE ANCHOR BOLTS 10 INCHES INTO THE MEDIAN OR AS REQUIRED TO PROVIDE A MINIMUM PULL OUT STRENGTH OF 35,000 POUNDS PER ANCHOR BOLT.
5. SAW CUT AND REMOVE A PORTION OF THE EXISTING BOX BEAM MEDIAN, AS REQUIRED. IF AN EXISTING MEDIAN BARRIER SUPPORT POST INTERFERES WITH THE NEW END LOCK, CONTACT THE ENGINEER.
6. PROVIDE A PAINT SYSTEM FOR ALL NEW STRUCTURAL STEEL, INCLUDING TOUCH-UP OF ALL AREAS DAMAGED BY THE CONTRACTOR, THAT IS IN CONFORMANCE WITH THE STANDARD SPECIFICATIONS.
7. VERIFY ALL DIMENSIONS, BOTH THOSE SHOWN AND THOSE NOT SHOWN, AND PROVIDE A COPY TO THE ENGINEER FOR APPROVAL PRIOR TO FABRICATION.
8. FOR SECTION B-B, F-F, F'-F' AND G-G SEE DRAWING NO. 48.



MODJESKI and MASTERS
INCORPORATED
4909 LOUISE DRIVE
MECHANICSBURG, PA 17055

CENTURY SOUTHERN, INC.
2811 REIDVILLE ROAD, STE 2
SPARTANBURG, SC 29301

STATE OF NORTH CAROLINA	
DEPARTMENT OF TRANSPORTATION	
RALEIGH	
CAPE FEAR RIVER CROSSING	
WILMINGTON, NORTH CAROLINA	
TRAFFIC BARRIER GATE DETAILS - 1	
DESIGNED BY	R.L. REED
SCALE	AS NOTED
DESIGNED	K.W. JOHNS
DATE	APRIL, 2005
CHECKED	M.C. IRWIN
DATE	APRIL, 2005
CHECKED	M.C. IRWIN
DRAWING NO.	47 OF 53