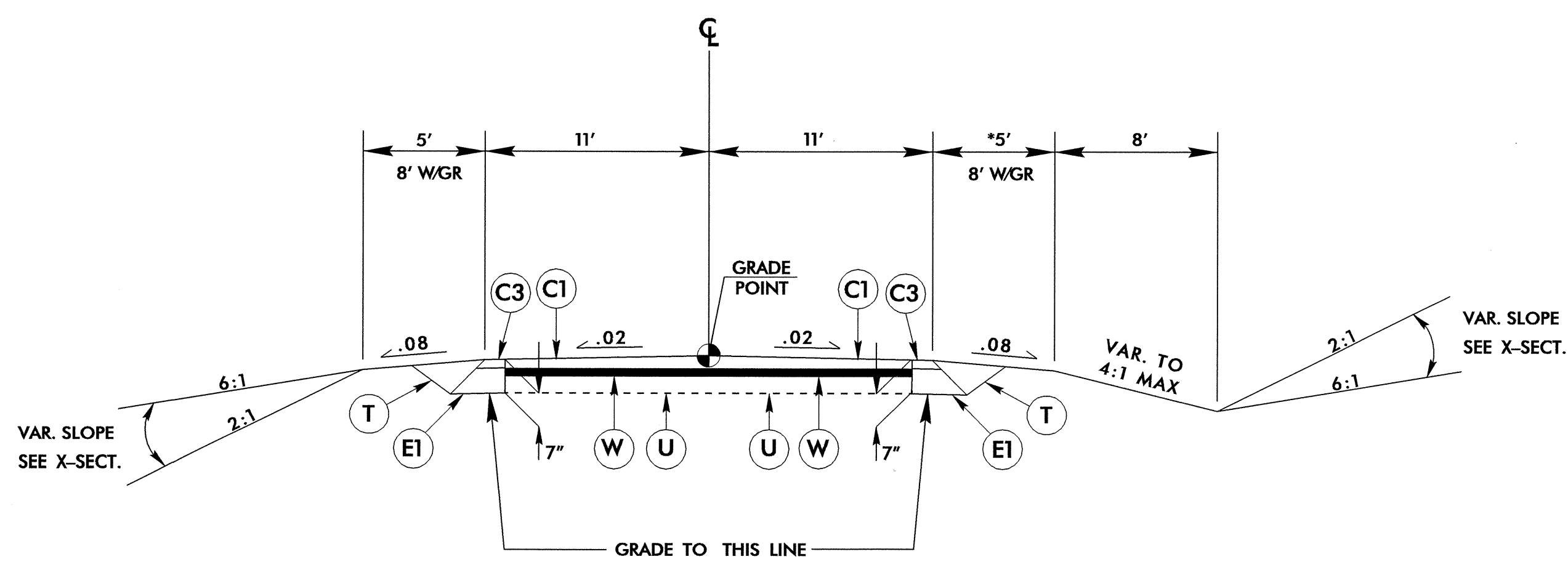


PAVEMENT SCHEDULE ( FINAL PAVEMENT DESIGN )	
C1	PROP. APPROX. 1 1/2" ASPHALT CONCRETE SURFACE COURSE, TYPE SF9.5A, AT AN AVERAGE RATE OF 165 LBS. PER SQ. YD.
C2	PROP. APPROX. 2" ASPHALT CONCRETE SURFACE COURSE, TYPE SF9.5A, AT AN AVERAGE RATE OF 110 LBS. PER SQ. YD. IN EACH OF TWO LAYERS.
C3	PROP. APPROX. 3" ASPHALT CONCRETE SURFACE COURSE, TYPE SF9.5A, AT AN AVERAGE RATE OF 165 LBS. PER SQ. YD. IN EACH OF TWO LAYERS.
C4	PROP. VAR. DEPTH ASPHALT CONCRETE SURFACE COURSE, TYPE SF9.5A, AT AN AVERAGE RATE OF 110 LBS. PER SQ. YD. PER 1" DEPTH, TO BE PLACED IN LAYERS NOT LESS THAN 1/4" IN DEPTH OR GREATER THAN 1 1/2" IN DEPTH.
E1	PROP. APPROX. 4" ASPHALT CONCRETE BASE COURSE, TYPE B25.0B, AT AN AVERAGE RATE OF 456 LBS. PER SQ. YD.
E2	PROP. VAR. DEPTH ASPHALT CONCRETE BASE COURSE, TYPE B25.0B, AT AN AVERAGE RATE OF 114 LBS. PER SQ. YD. PER 1" DEPTH, TO BE PLACED IN LAYERS NOT LESS THAN 3" IN DEPTH OR GREATER THAN 5 1/2" IN DEPTH.
J1	PROP. 8" AGGREGATE BASE COURSE.
P	PRIME COAT AT THE RATE OF 0.35 GAL. PER SQ. YD.
R	EXPRESSWAY CURB & GUTTER.
T	EARTH MATERIAL.
U	EXISTING PAVEMENT.
W	VARIABLE DEPTH ASPHALT PAVEMENT. (SEE WEDGING DETAIL)

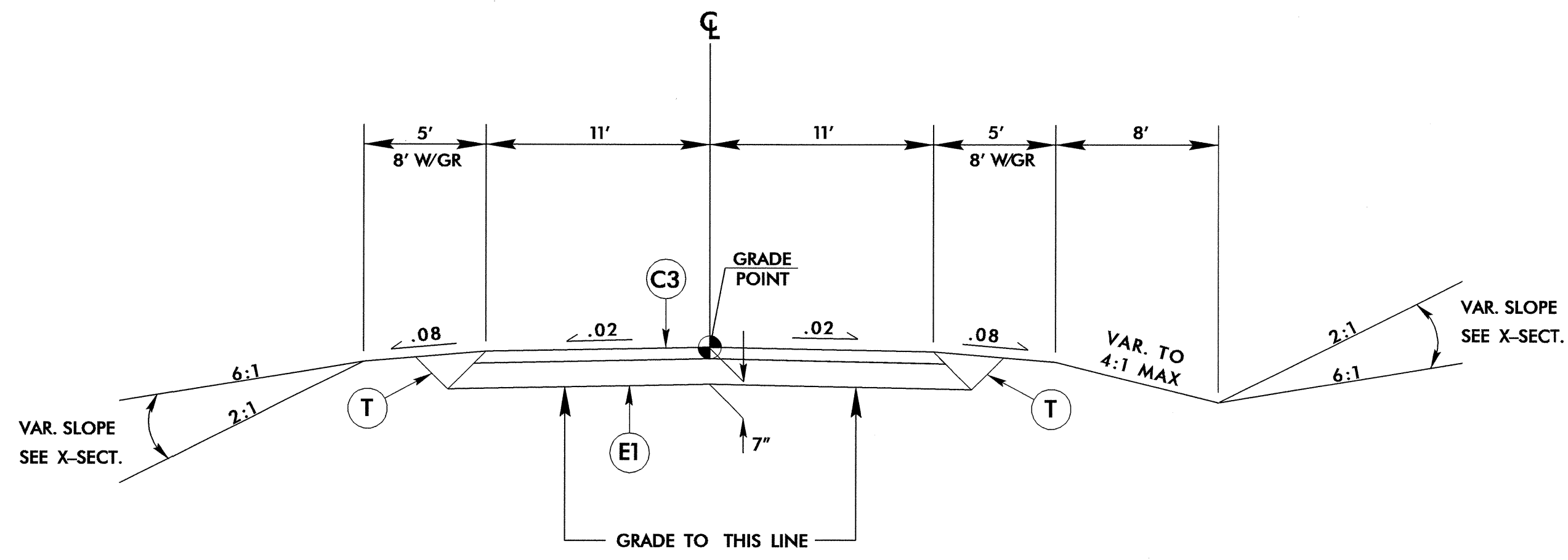
NOTE: PAVEMENT EDGE SLOPES ARE 1:1 UNLESS SHOWN OTHERWISE.



TYPICAL SECTION NO. 1

USE TYPICAL SECTION NO. 1

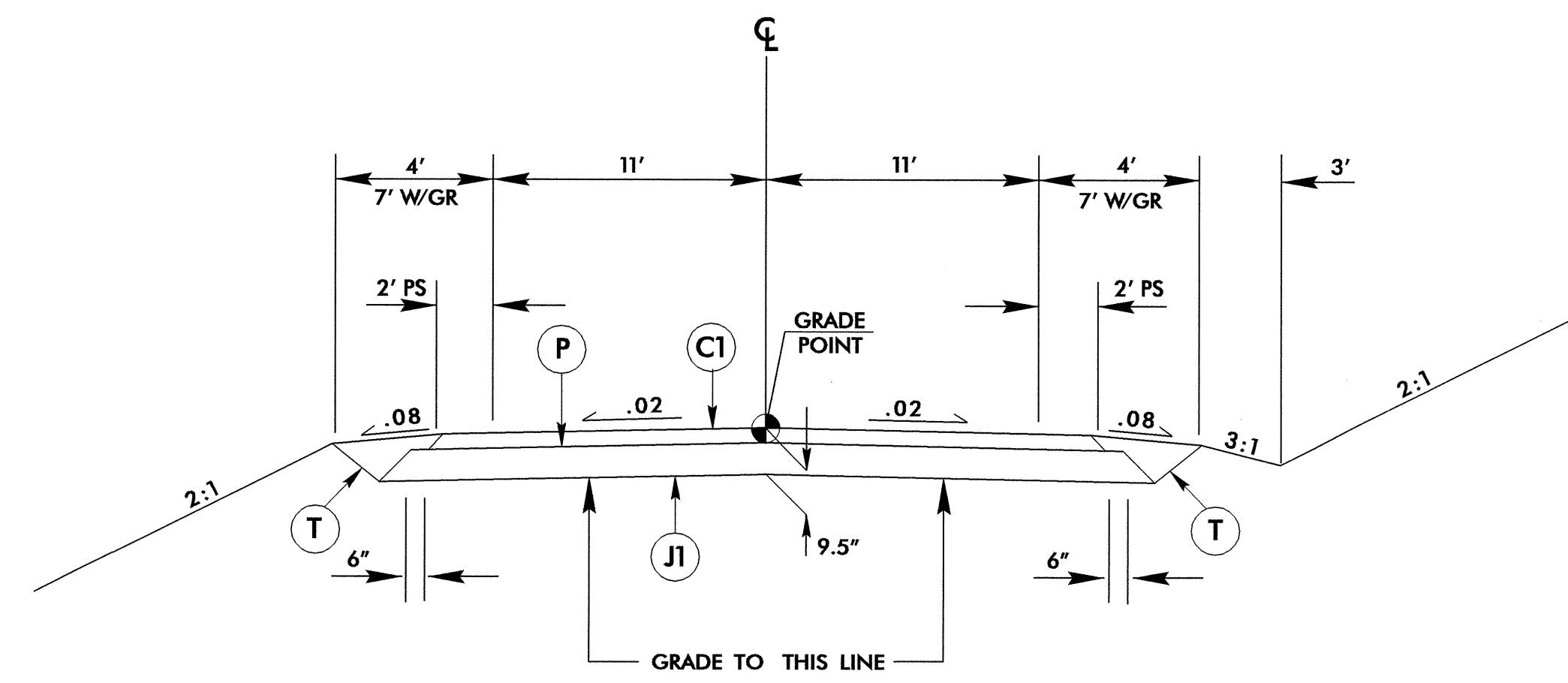
- L- STA. 10+00.00 TO -L- STA. 10+50.00 TRANSITION FROM EXIST.
- L- STA. 10+50.00 TO -L- STA. 14+00.00
- L- STA. 15+80.00 LT TO -L- STA. 16+87.00 LT
- L- STA. 16+87.00 LT TO -L- STA. 17+22.00 LT TRANSITION TO EXIST.
- L- STA. 15+80.00 RT TO -L- STA. 16+54.94 RT
- \* -L- STA. 16+54.94 RT TO -L- STA. 17+22.00 RT REFER TO DETAIL
- L- STA. 16+62.00 RT TO -L- STA. 17+22.00 RT TRANSITION TO EXIST.



TYPICAL SECTION NO. 2

USE TYPICAL SECTION NO. 2

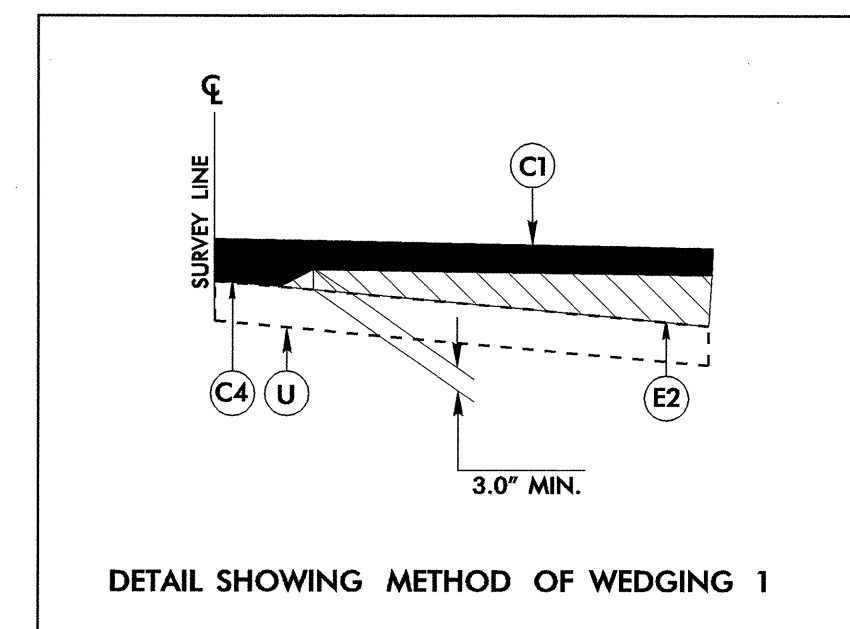
- L- STA. 14+00.00 TO -L- STA. 14+35.00 (BEGIN BRIDGE)
- L- STA. 15+27.00 (END BRIDGE) TO -L- STA. 15+80.00



TYPICAL SECTION NO. 3

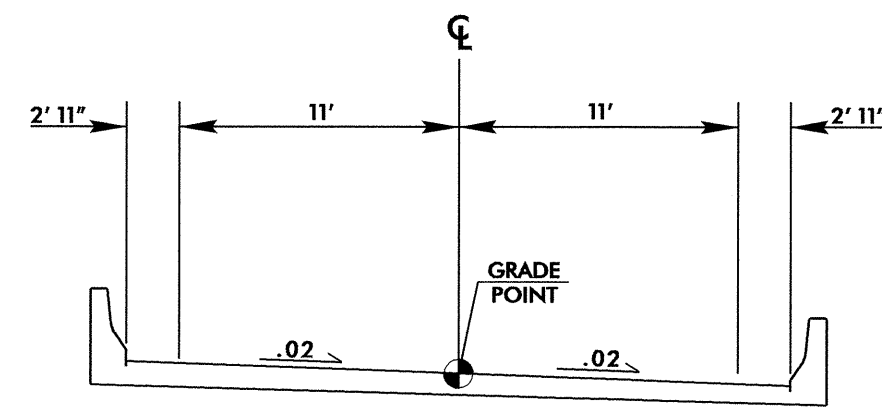
USE TYPICAL SECTION NO. 3

- DET- STA. 12+47.70 TO -DET- STA. 13+94.00 (BEGIN BRIDGE)
- DET- STA. 14+59.00 (END BRIDGE) TO -DET- STA. 14+60.14



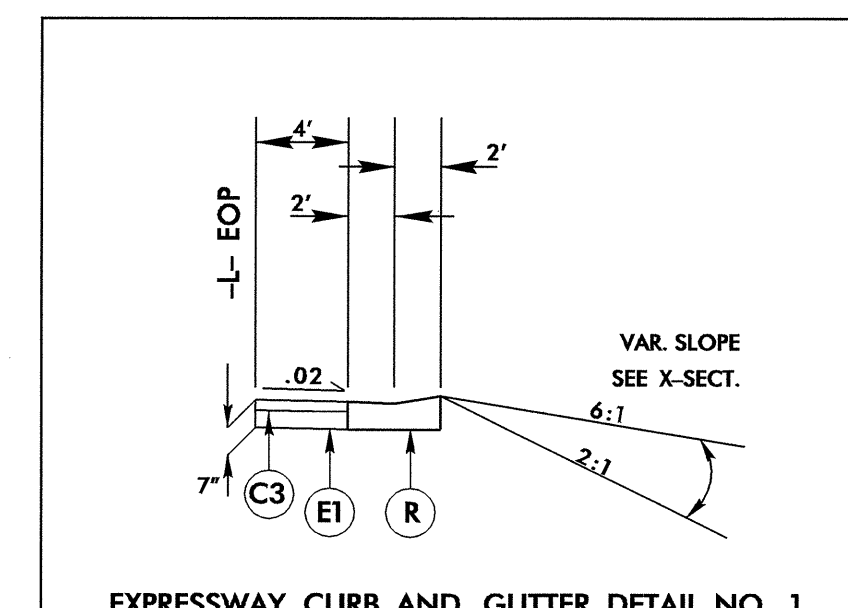
DETAIL SHOWING METHOD OF WEDGING 1

USE WITH TYPICAL SECTION NO. 1



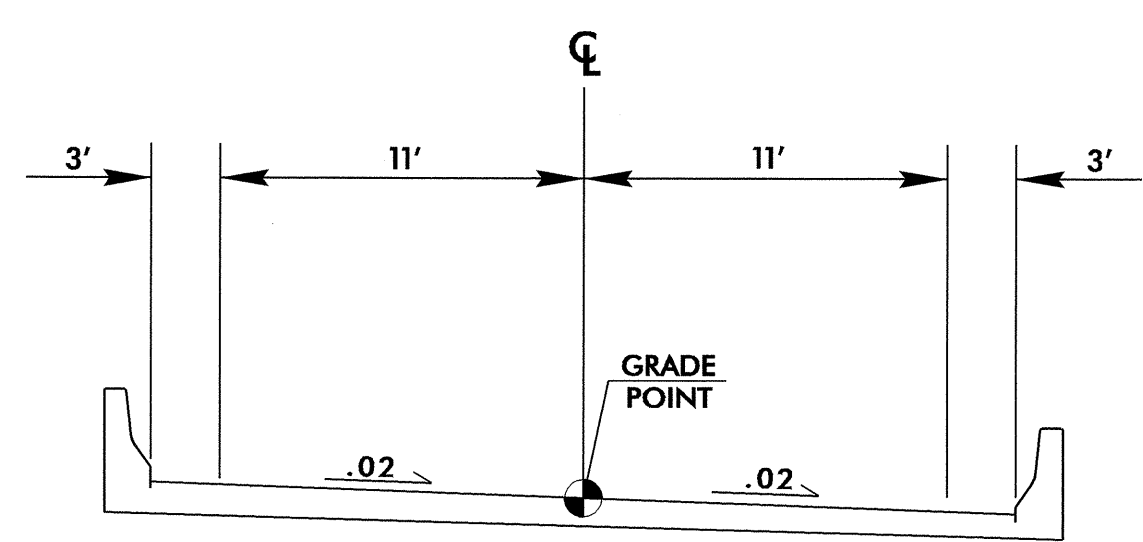
TYPICAL BRIDGE DETAIL NO. 1

-L- STA. 14+35.00 TO -L- STA. 15+27.00



EXPRESSWAY CURB AND GUTTER DETAIL NO. 1

USE WITH TYPICAL SECTION NO. 1



TYPICAL BRIDGE DETAIL NO. 2

-DET- STA. 13+94.00 TO -DET- STA. 14+59.00

30-JUN-2005 08:07 C:\PROJ\B3205.TJP \$\$\$USERNAME\$\$\$