

**BILL OF MATERIAL
PARAPETS AND END POSTS**

BAR	NO.	SIZE	TYPE	LENGTH	WEIGHT
*B1	24	5	STR	46'-3"	1158
*E1	8	7	STR	2'-4"	38
*E2	8	7	STR	2'-6"	41
*E3	8	7	STR	2'-7"	42
*E4	8	7	STR	2'-9"	45
*E5	8	7	STR	2'-10"	46
*F1	8	6	STR	3'-5"	41
*F2	8	6	STR	3'-10"	46
*EPOXY COATED REINFORCING STEEL				LBS.	1457
CLASS AA CONCRETE				C.Y.	12.5
CONCRETE PARAPET				LIN. FT.	178.80

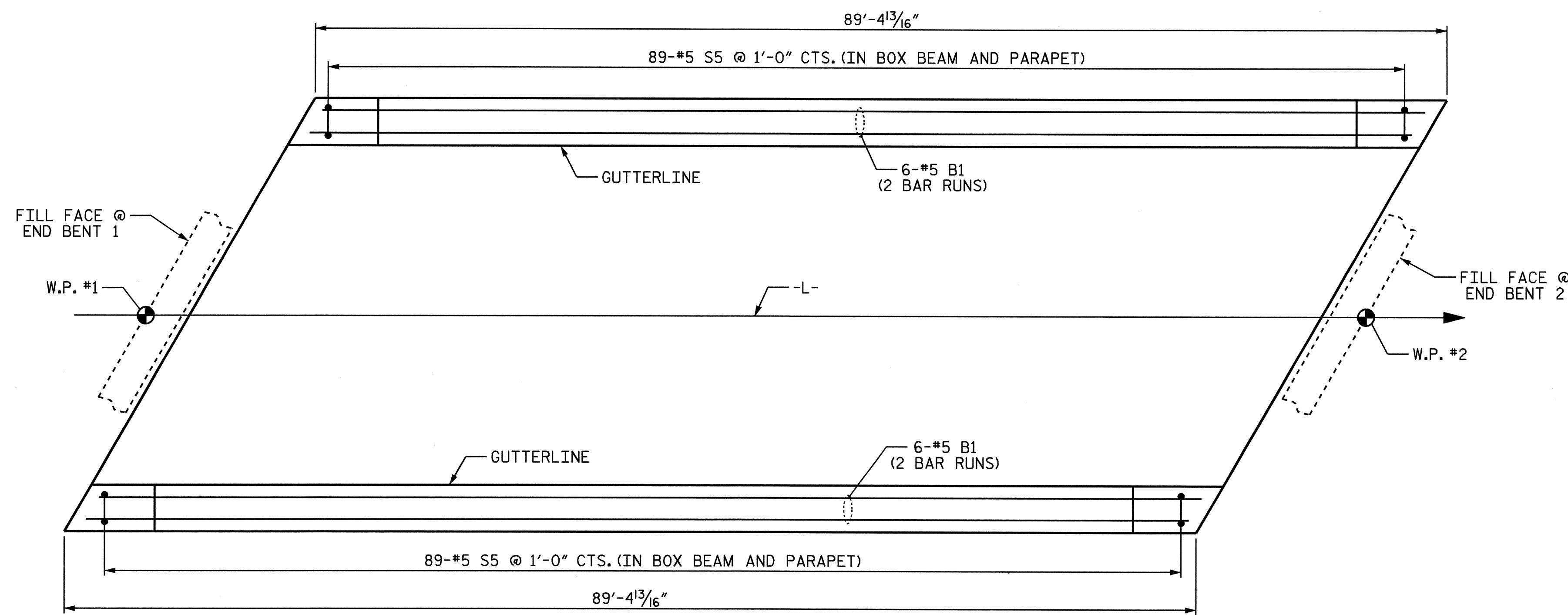
* THESE BARS ARE EPOXY COATED

SPLICE LENGTH CHART

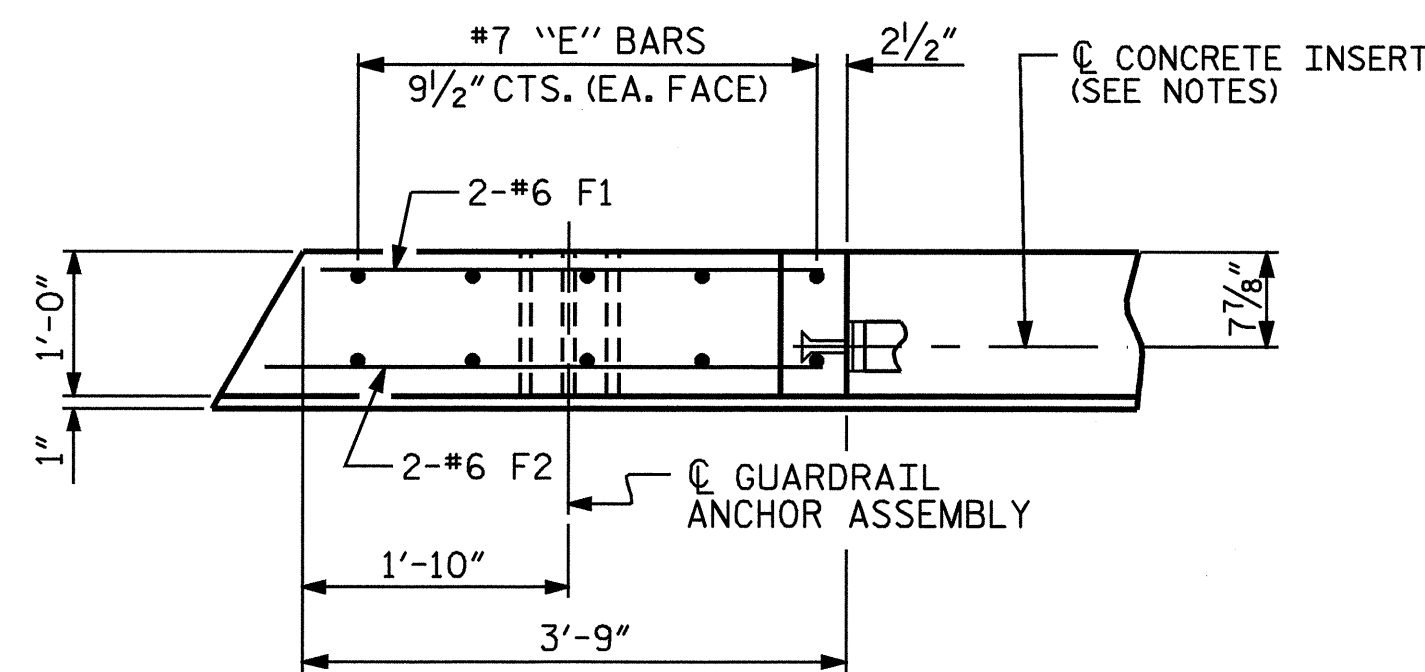
BAR	MIN. SPLICE
B1	3'-5"

NOTES

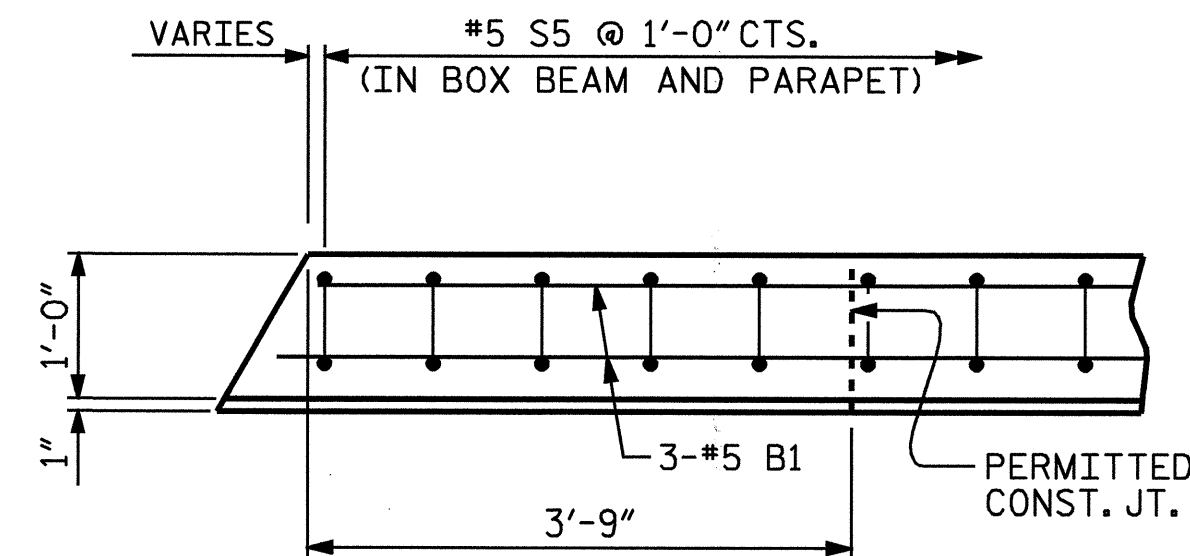
ALL REINFORCING STEEL IN THE PARAPETS AND END POSTS SHALL BE EPOXY COATED.
 FOR DETAILS OF CONCRETE INSERT AND GUARDRAIL ANCHOR ASSEMBLY, SEE "RAIL POST SPACINGS AND END OF RAIL DETAILS" SHEET 3 OF 4.
 #5 S5 BARS ARE INCLUDED IN THE BILL OF MATERIAL FOR BOX BEAM UNITS.
 GROOVED CONTRACTION JOINTS, 1/2" IN DEPTH, SHALL BE TOOLED IN ALL EXPOSED FACES OF THE PARAPET IN ACCORDANCE WITH ARTICLE 825-10(B) OF THE STANDARD SPECIFICATIONS. THE CONTRACTION JOINT SHALL BE LOCATED AT A SPACING OF 8 FT. TO 10 FT. BETWEEN EXPANSION JOINTS. NO CONTRACTION JOINTS WILL BE REQUIRED FOR SEGMENTS LESS THAN 10 FEET IN LENGTH.



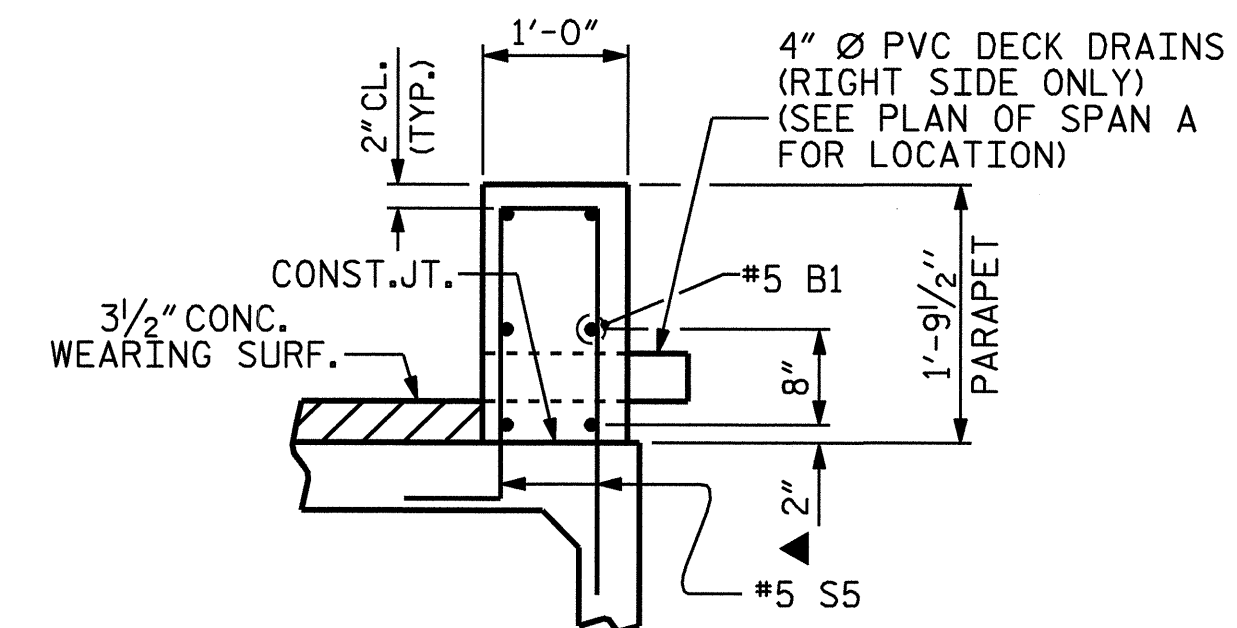
PLAN OF PARAPET



PLAN OF END POST

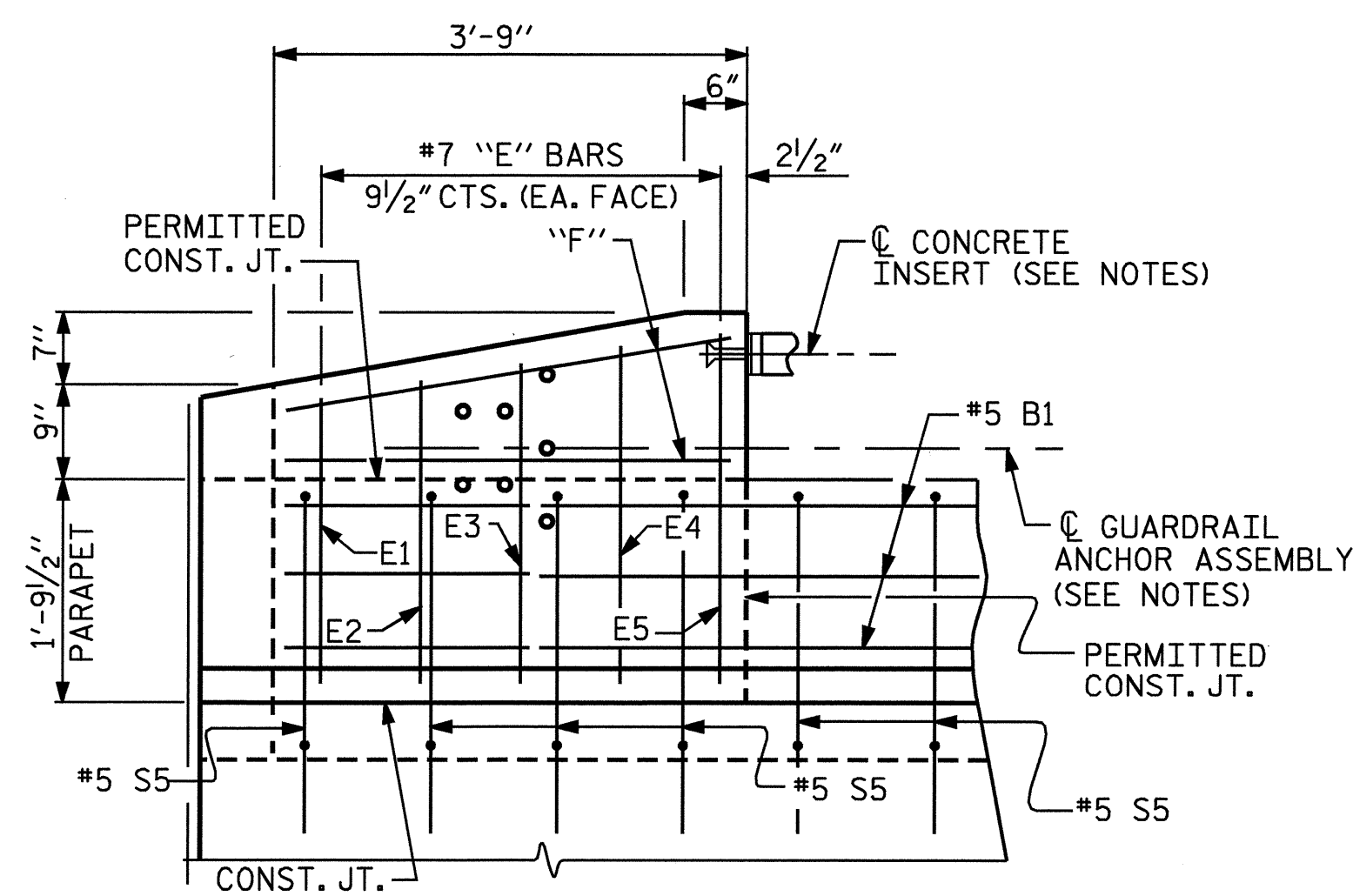


PLAN OF PARAPET

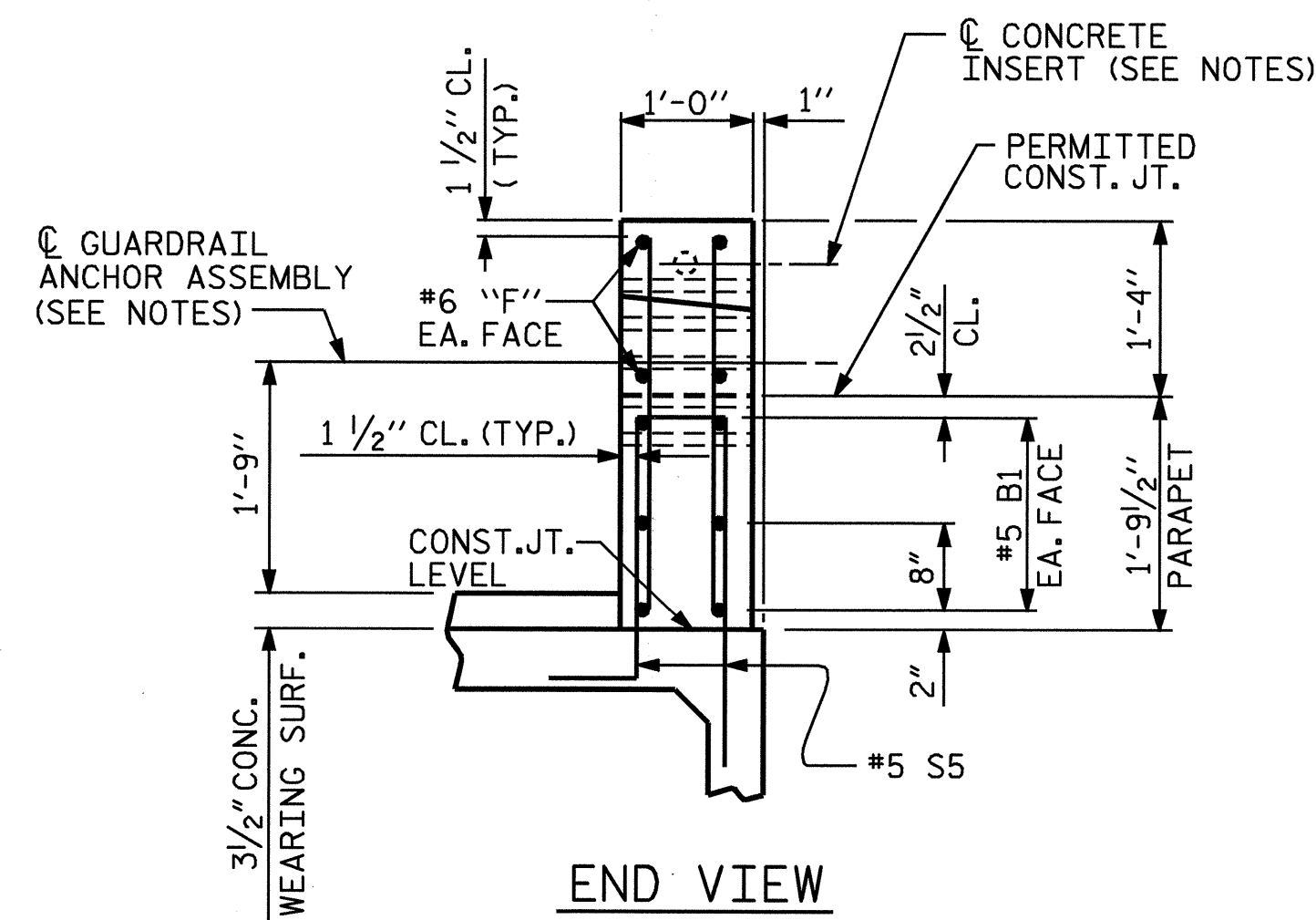


SECTION THRU PARAPET

▲ THESE #5 B1 BARS TO BE MOVED UP AS NECESSARY TO KEEP THE DECK DRAIN ABOVE 3 1/2" CONCRETE WEARING SURFACE.



ELEVATION

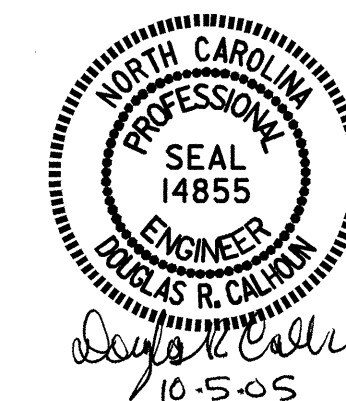


END VIEW

PARAPET AND END POST FOR ONE-BAR RAIL

PROJECT NO. B-3205
MADISON COUNTY
 STATION: 14+81.00 -L-

SHEET 1 OF 4



STATE OF NORTH CAROLINA
 DEPARTMENT OF TRANSPORTATION
 RALEIGH
**SUPERSTRUCTURE
 CONCRETE PARAPET AND
 PARAPET END POST
 DETAILS**

REVISIONS						SHEET NO.
NO.	BY:	DATE:	NO.	BY:	DATE:	S-8
1			3			TOTAL SHEETS
2			4			21

DRAWN BY : T. A. HARRIS DATE : 5/18/05
 CHECKED BY : T. L. CLELLAND DATE : 5/24/05

04-OCT-2005 15:00
 R:\Structures\B3205\taharris\Microstation\B-3205.sd.1MR.01.dgn
 taharris