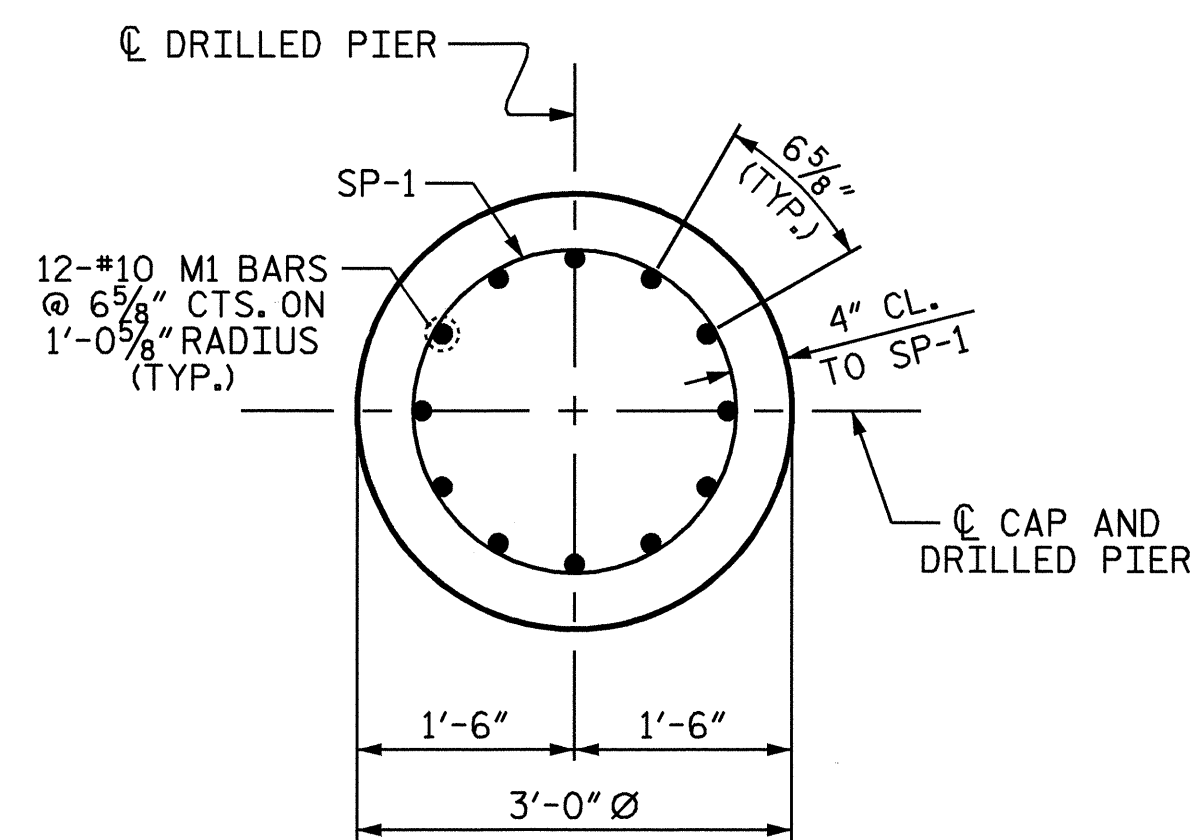


BAGGED STONE AND PIPE SHALL BE PLACED IMMEDIATELY AFTER COMPLETION OF END BENT EXCAVATION. PIPE MAY BE EITHER CONCRETE, CORRUGATED STEEL, CORRUGATED ALUMINUM ALLOY, OR CORRUGATED PLASTIC. PERFORATED PIPE WILL NOT BE ALLOWED.

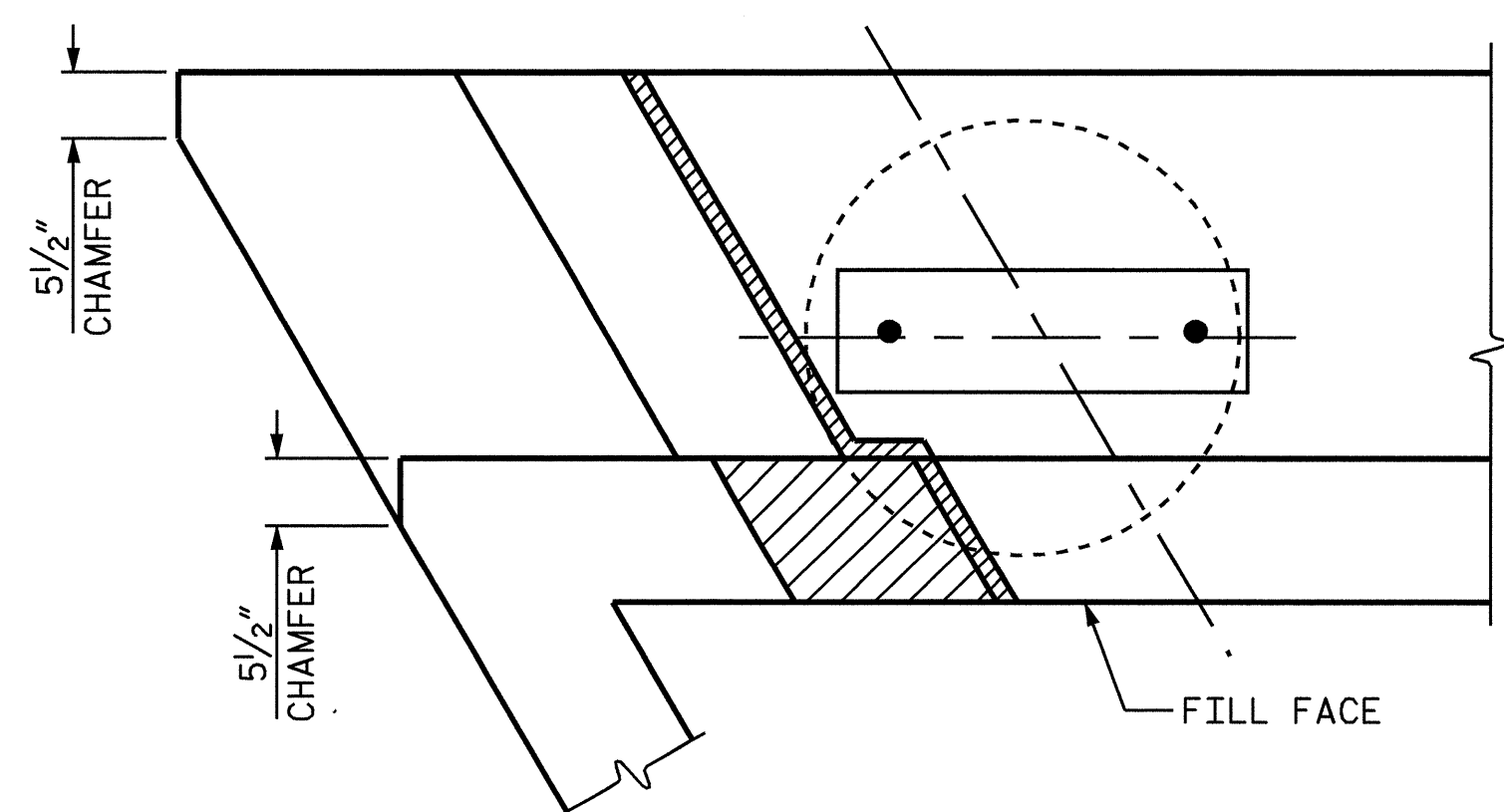
BAGGED STONE SHALL REMAIN IN PLACE UNTIL THE ENGINEER DIRECTS THAT IT BE REMOVED. THE CONTRACTOR SHALL REMOVE AND DISPOSE OF SILT ACCUMULATIONS AT BAGGED STONE WHEN SO DIRECTED BY THE ENGINEER. BAGS SHALL BE REMOVED AND REPLACED WHENEVER THE ENGINEER DETERMINES THAT THEY HAVE DETERIORATED AND LOST THEIR EFFECTIVENESS.

NO SEPARATE PAYMENT WILL BE MADE FOR THIS WORK AND THE ENTIRE COST OF THIS WORK SHALL BE INCLUDED IN THE UNIT CONTRACT PRICE BID FOR THE SEVERAL PAY ITEMS.

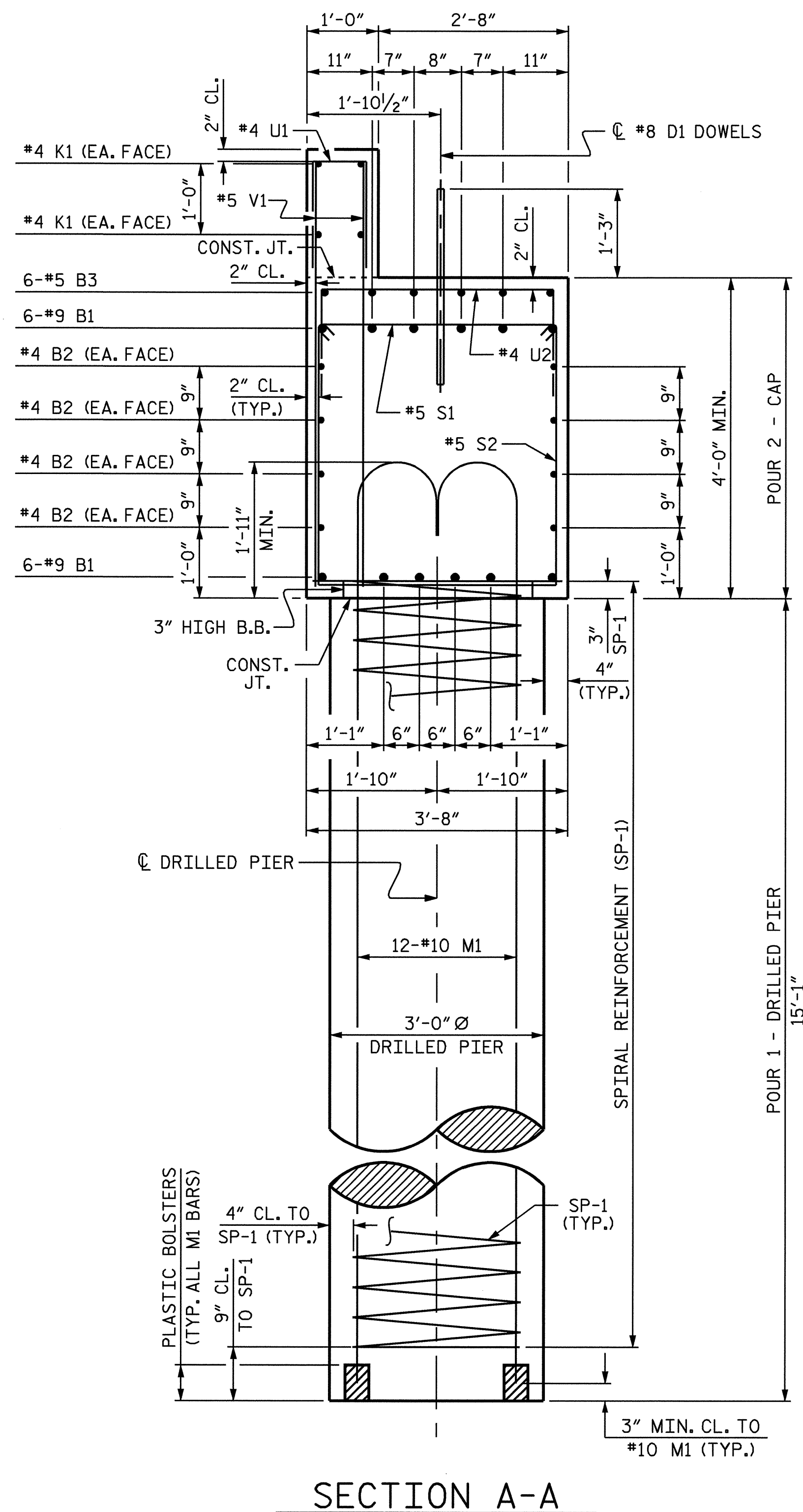
### TEMPORARY DRAINAGE AT END BENT



SECTION THRU DRILLED PIER



CHAMFER DETAIL



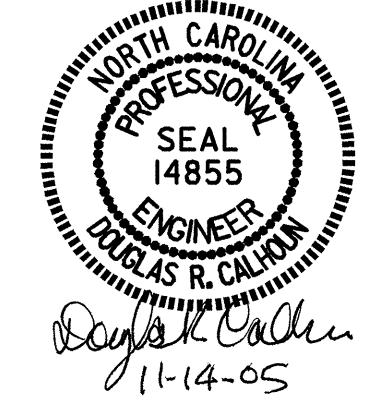
SECTION A-A

BAR TYPES					BILL OF MATERIAL					
					END BENT 1					
BAR NO.	SIZE	TYPE	LENGTH	WEIGHT						
B1	12	9	1	43 - 6	1775					
B2	16	4	STR	21 - 10	233					
B3	6	5	STR	33 - 3	208					
D1	20	8	STR	2 - 3	120					
H1	10	4	5	6 - 4	42					
H2	10	4	5	6 - 0	40					
H3	9	4	6	6 - 8	40					
H4	9	4	6	7 - 0	42					
K1	8	4	STR	21 - 10	117					
K2	8	4	STR	3 - 5	18					
M1	36	10	2	21 - 2	3279					
S1	40	5	3	4 - 3	177					
S2	40	5	4	11 - 6	480					
U1	34	4	7	3 - 8	83					
U2	21	4	7	6 - 4	89					
U3	4	4	7	5 - 8	15					
V1	68	5	STR	5 - 6	390					
V2	22	5	STR	7 - 10	180					
V3	24	5	STR	7 - 3	181					
SP-1	3	**	8	272 - 10	854					
REINFORCING STEEL				LBS.	7509					
SPIRAL COLUMN										
REINFORCING STEEL				LBS.	854					
CLASS A CONCRETE BREAKDOWN										
POUR 2 (CAP & LOWER PART OF WINGS)				C.Y.	27.9					
POUR 3 (BACKWALL & UPPER PART OF WINGS)				C.Y.	4.6					
POUR 4 (LATERAL GUIDE)				C.Y.	0.1					
CLASS A TOTAL				C.Y.	32.6					
DRILLED PIER CONCRETE										
POUR 1 (DRILLED PIERS)				C.Y.	11.8					
3'-0" Ø DRILLED PIER IN SOIL				LIN. FT.	24.25					
3'-0" Ø DRILLED PIER NOT IN SOIL				LIN. FT.	21.00					
SID INSPECTION					1 PER BENT					
CROSSHOLE SONIC LOGGING					1 PER BENT					
CSL TUBES				LIN. FT.	211.00					

ALL BAR DIMENSIONS ARE OUT TO OUT.  
 \*\* THE SP-1 SPIRAL REINFORCING STEEL SHALL BE W31 OR D-31 COLD DRAWN WIRE OR #5 PLAIN OR DEFORMED BAR.

PROJECT NO. B-3205  
MADISON COUNTY  
 STATION: 14+81.00 -L-

SHEET 3 OF 3



STATE OF NORTH CAROLINA  
 DEPARTMENT OF TRANSPORTATION  
 RALEIGH  
**SUBSTRUCTURE  
 END BENT 1**

DRAWN BY: T. A. HARRIS DATE: 5/26/05  
 CHECKED BY: K. P. SEDA DATE: 6/20/05

REVISIONS						SHEET NO.
NO.	BY:	DATE:	NO.	BY:	DATE:	S-15
1			3			TOTAL SHEETS
2			4			21