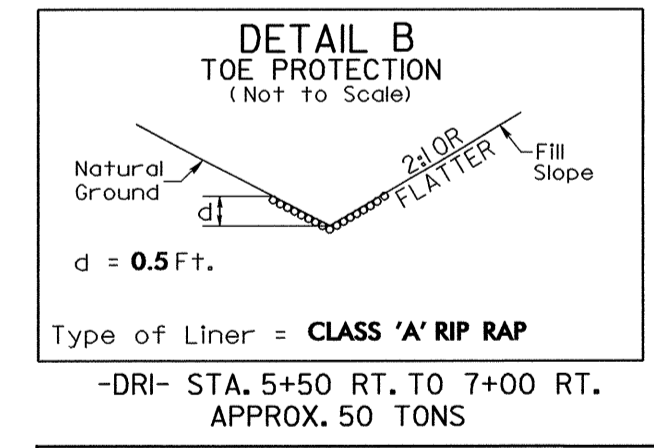
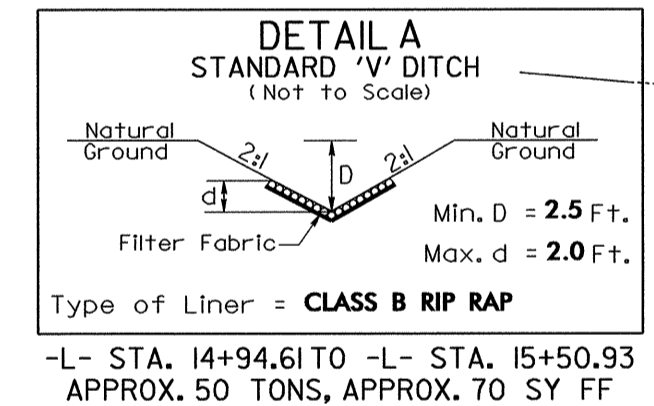
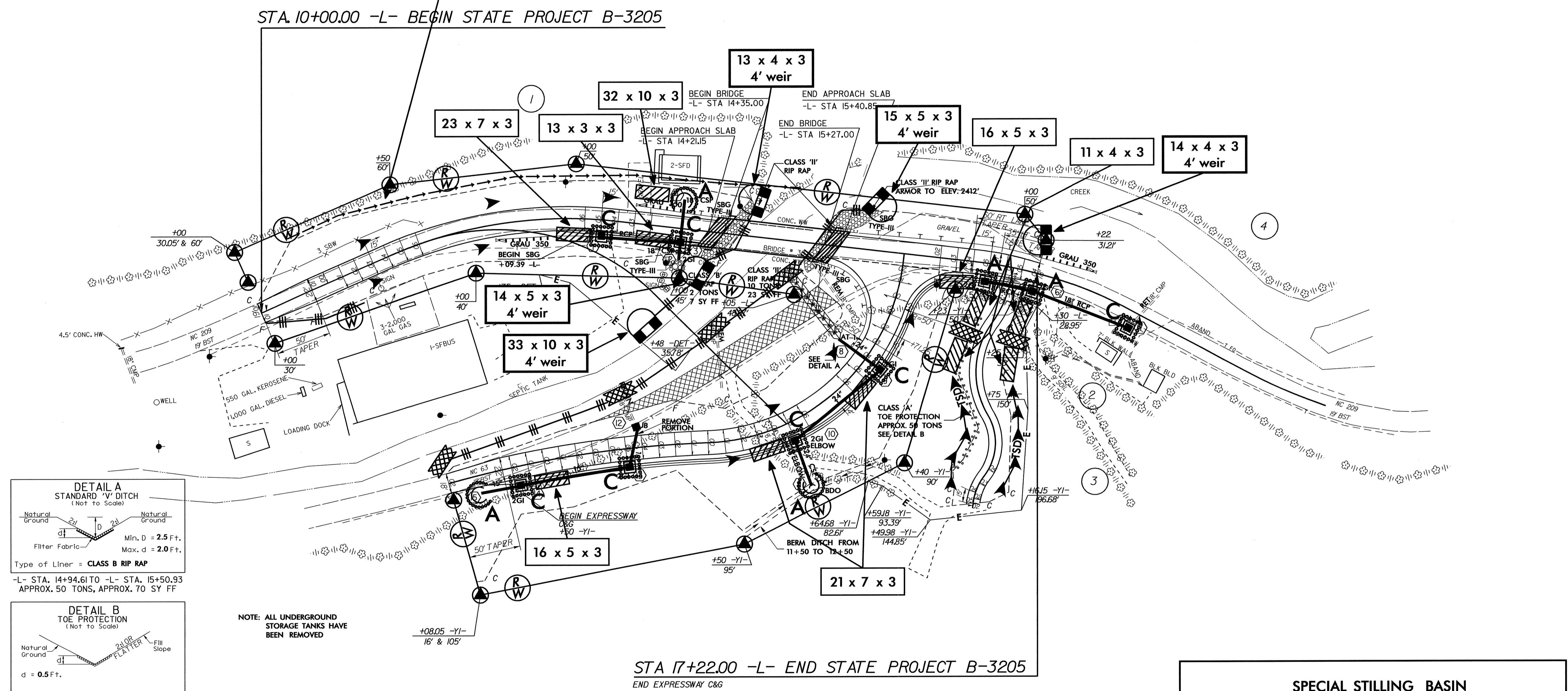
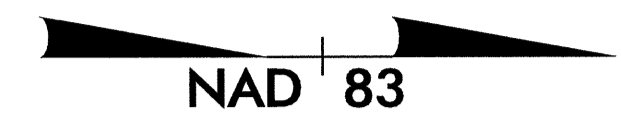


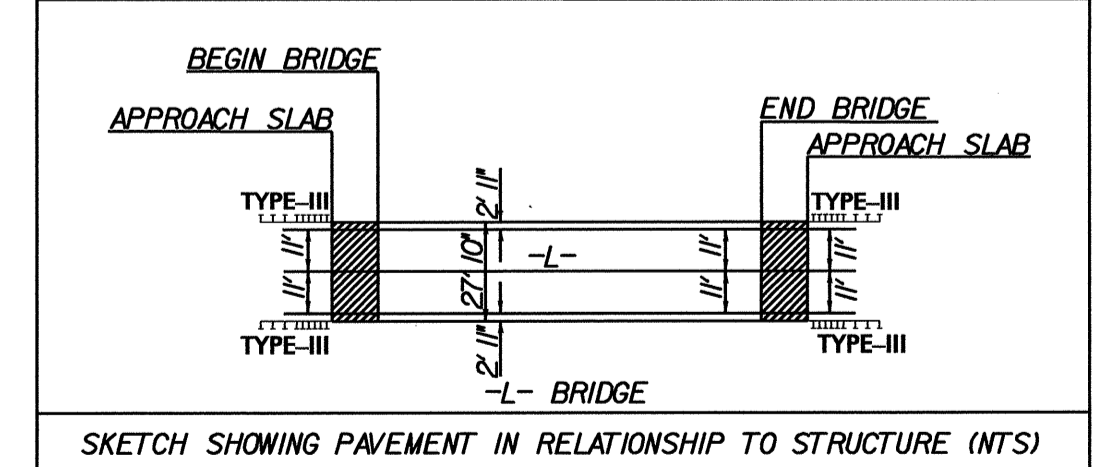
PROJECT REFERENCE NO. B-3205	SHEET NO. EC-6/CONST.4
RW SHEET NO.	
ROADWAY DESIGN ENGINEER	HYDRAULICS ENGINEER

NOTE: UTILIZE SPECIAL STILLING BASIN AND/OR TEMPORARY ROCK SEDIMENT DAM TYPE - B AS STILLING BASIN WHERE APPLICABLE.

ESTABLISH TEMPORARY VEGETATED EARTHEN BERM (1.5 FT HEIGHT, 2:1 SIDE SLOPES) OR OTHER SUITABLE DEVICE TO CONVEY OFFSITE RUNOFF AROUND PROJECT LIMITS



NOTE: ALL UNDERGROUND STORAGE TANKS HAVE BEEN REMOVED



STA 17+22.00 -L- END STATE PROJECT B-3205  
END EXPRESSWAY C&G

