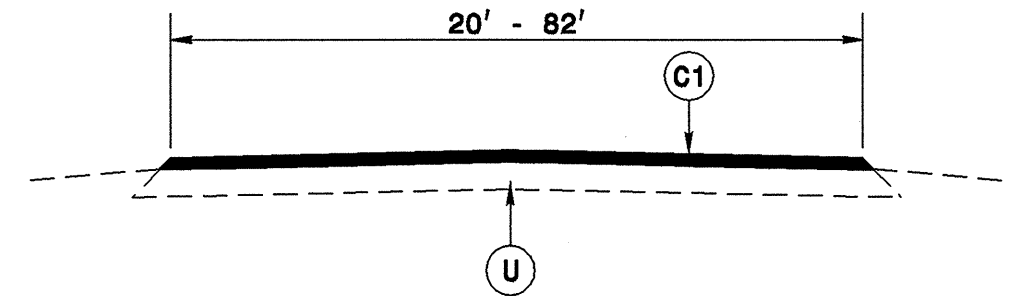


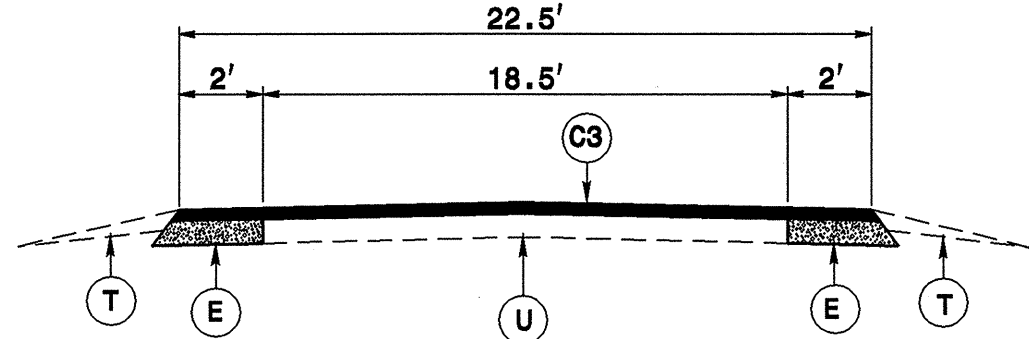
5/28/99

STATE	PROJECT NO.	SHEET NO.	TOTAL SHEETS
N.C.	7CR.10011.6, ETC	6	15

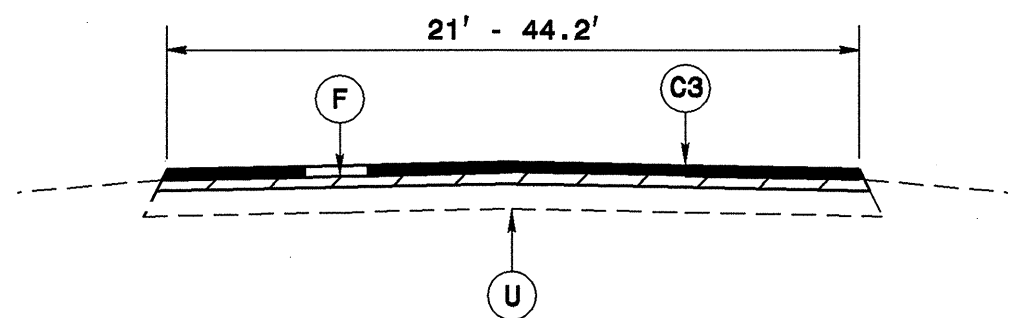
7CR.10011.6, 7CR.20011.6, 7CR.300101.6,
7CR.300105.6, 7CR.300107.6, 7CR.300116.6,
7CR.300123.6



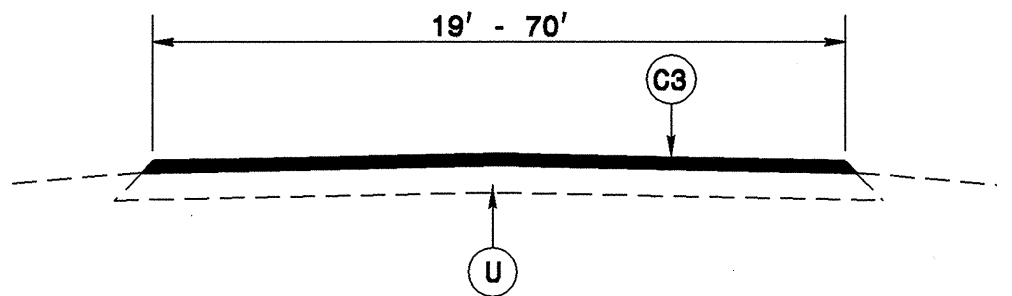
TYPICAL SECTION NO. 1



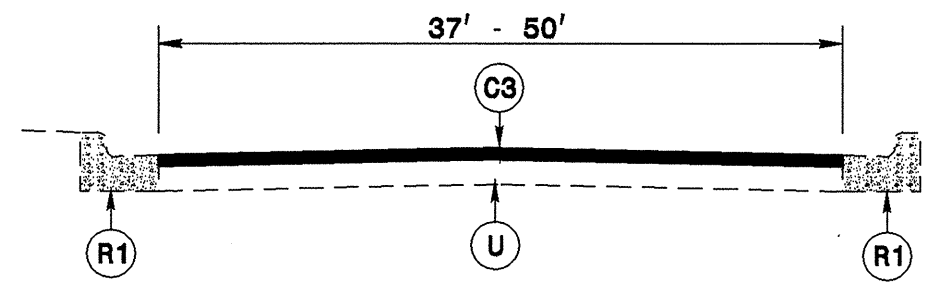
TYPICAL SECTION NO. 2



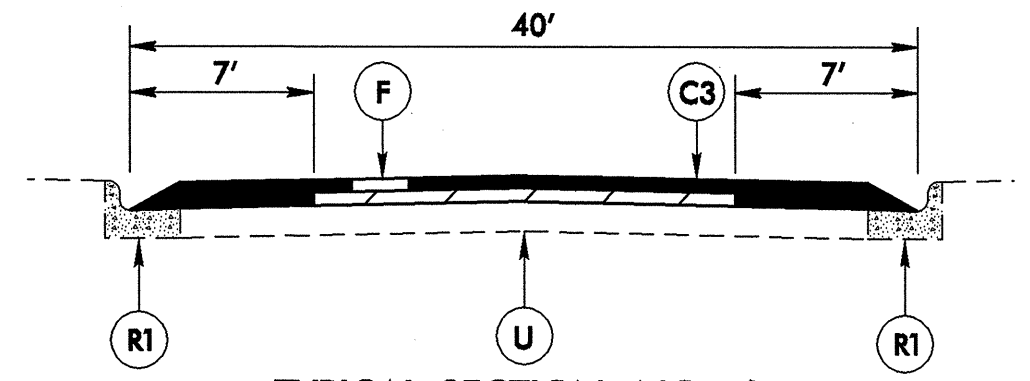
TYPICAL SECTION NO. 3



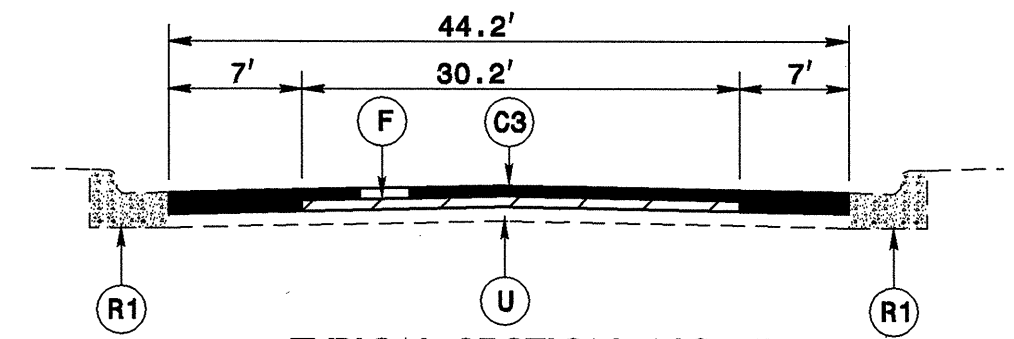
TYPICAL SECTION NO. 4



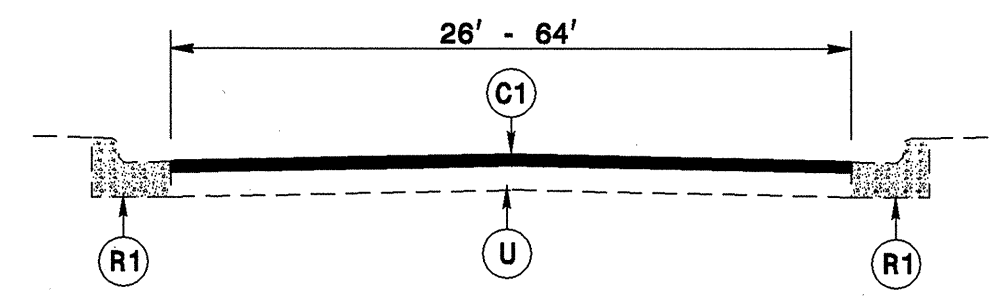
TYPICAL SECTION NO. 5



TYPICAL SECTION NO. 6



TYPICAL SECTION NO. 7



TYPICAL SECTION NO. 8

PAVEMENT SCHEDULE

C1	PROP. APPROX. 1 1/2" ASPHALT CONCRETE SURFACE COURSE, TYPE S9.5B, AT AN AVERAGE RATE OF 168 LBS. PER SQ. YD.	E	PROP. APPROX. 8" ASPHALT CONCRETE BASE COURSE, TYPE B25.0B, AT AN AVERAGE RATE OF 912 LBS. PER SQ. YD.		
C2	PROP. APPROX. 1 1/2" ASPHALT CONCRETE SURFACE COURSE, TYPE S9.5C, AT AN AVERAGE RATE OF 168 LBS. PER SQ. YD.	F	ASPHALT SURFACE TREATMENT, NO. 78M STONE		
C3	PROP. APPROX. 1 1/4" ASPHALT CONCRETE SURFACE COURSE, TYPE S9.5B, AT AN AVERAGE RATE OF 140 LBS. PER SQ. YD.	R1	EXISTING 2-6 CURB AND GUTTER	R2	EXISTING CONCRETE ISLAND
D	PROP. APPROX. 3" ASPHALT INTERMEDIATE COURSE, TYPE I19.0B, AT AN AVERAGE RATE OF 342 LBS. PER SQ. YD.	T	EARTH MATERIAL (SHOULDER RECONSTRUCTION)	U	EXISTING PAVEMENT.

03-NOV-2005 10:01
surfacing project system 7/7cr-10011.6, etc \volamance-typical.s.dgn