

SURVEY CONTROL SHEET B-3877

BENCHMARK DATA

.....
 BM#1 ELEVATION - 187.63
 N 730944 E 2248631
 L STATION 10+72 83' LEFT

 TBM#2 ELEVATION - 157.14
 N 729505 E 2249396
 L STATION 27+06 38' RIGHT

 BM#2 ELEVATION - 158.56
 N 729649 E 2249260
 L STATION 25+12 10 RIGHT

 BM#3 ELEVATION - 193.98
 N 729267 E 2249849
 L STATION 32+07 49' RIGHT

 BM#4 ELEVATION - 211.10
 N 729255 E 2250636
 L STATION 39+86 33 LEFT

CONTROL DATA

BL POINT	DESC.	NORTH	EAST	ELEVATION	L STATION	OFFSET
1	GPS B3877-1	730870.7495	2248599.3676	183.41	11+12.28	14.10' LT
2	GPS B3877-2	730123.3659	2248924.5277	161.49	19+27.88	11.27' LT
101	BL-101	729651.6500	2249252.1160	157.36	25+04.69	12.86' RT
102	BL-102	729332.1430	2249748.2510	187.81	30+91.47	25.75' RT
103	BL-103	729212.4240	2250340.6770	211.59	36+92.13	13.77' RT

T1 POINT	DESC.	NORTH	EAST	ELEVATION	L STATION	OFFSET
200	T1-200	729683.8070	2249343.9750	148.80'	25+53.30	72.00 LT
201	T1-201	729651.6500	2249252.1160	187.81'	25+04.69	12.86 RT
202	T1-202	729587.5480	2249285.6050	148.53'	25+70.94	39.22 RT
203	T1-203	729512.7200	2249212.0180	148.03'	25+63.08	143.84 RT

DATUM DESCRIPTION

THE LOCALIZED COORDINATE SYSTEM DEVELOPED FOR THIS PROJECT IS BASED ON THE STATE PLANE COORDINATES ESTABLISHED BY NCDOT FOR MONUMENT "B3877-2" WITH NAD 1983/95 STATE PLANE GRID COORDINATES OF NORTHING: 730123.3659(1) EASTING: 2248924.5277(1) THE AVERAGE COMBINED GRID FACTOR USED ON THIS PROJECT (GROUND TO GRID) IS: 0.99990812 THE N.C. LAMBERT GRID BEARING AND LOCALIZED HORIZONTAL GROUND DISTANCE FROM "B3877-2" TO "L- STATION 20+50.00" IS S 23° 30' 23.79" E @ 122.1652 FT. ALL LINEAR DIMENSIONS ARE LOCALIZED HORIZONTAL DISTANCES VERTICAL DATUM USED IS NAVD 88

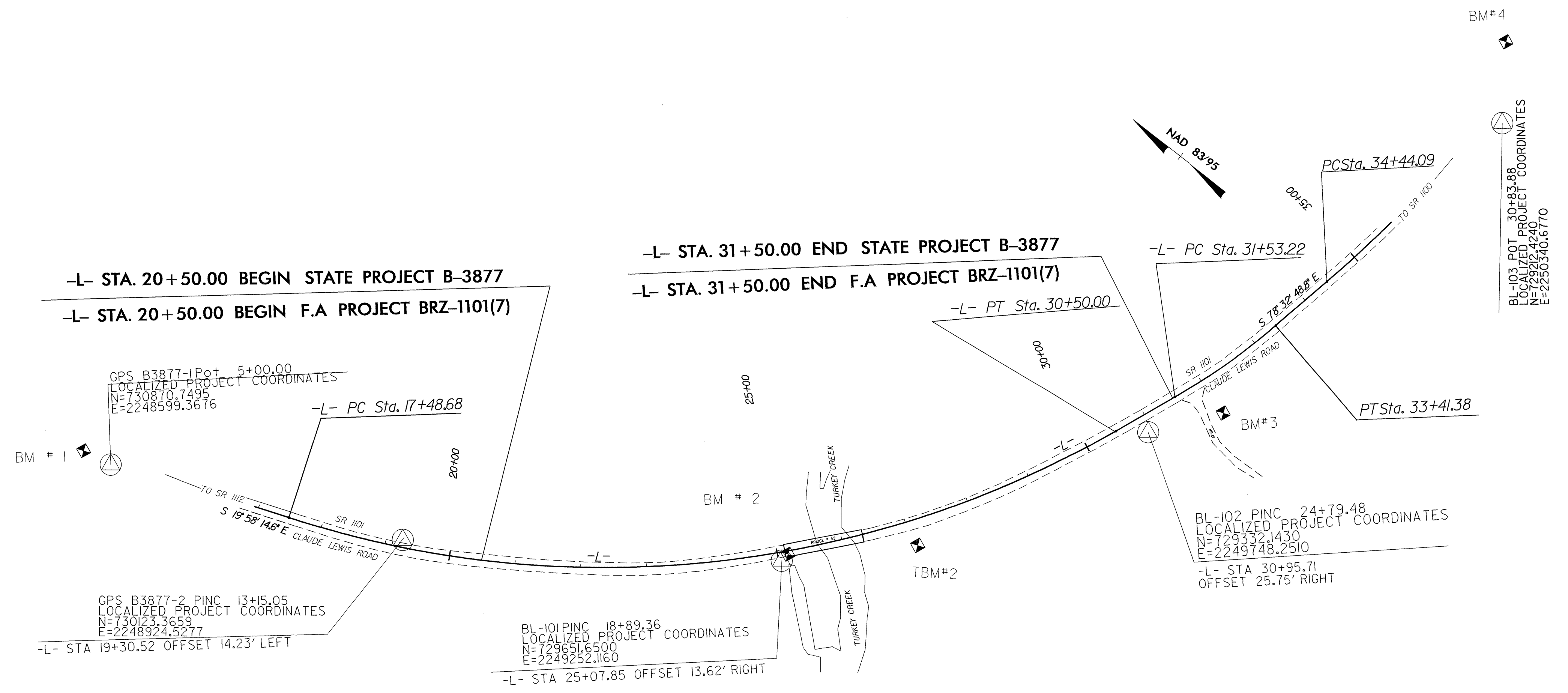
NOTES

1. THE CONTROL DATA FOR THIS PROJECT CAN BE FOUND ELECTRONICALLY BY SELECTING PROJECT CONTROL DATA AT:
[HTTP://WWW.DOHNDOT.STATE.NC.US/PRECONSTRUCT/HIGHWAY/LOCATION/PROJECT/](http://www.dohndot.state.nc.us/preconstruct/highway/location/project/)
 FILE: B3788.LS.CONTROL_040512.TXT

SITE CALIBRATION INFORMATION HAS NOT BEEN PROVIDED FOR THIS PROJECT. IF FURTHER INFORMATION IS NEEDED, PLEASE CONTACT THE LOCATION AND SURVEYS UNIT.

⊕ INDICATES GEODETIC CONTROL MONUMENTS USED OR SET FOR HORIZONTAL PROJECT CONTROL BY THE NCDOT LOCATION AND SURVEYS UNIT.
 PROJECT CONTROL ESTABLISHED UTILIZING GLOBAL POSITIONING SYSTEM.
 NETWORK ESTABLISHED FROM EXISTING HARN MONUMENTATION.

NOTE: DRAWING NOT TO SCALE



7/27/99

02-AUC-2005-10-06
 C:\pco\33321.11\loc_040512.dgn
 \$\$\$USERNAME\$\$\$