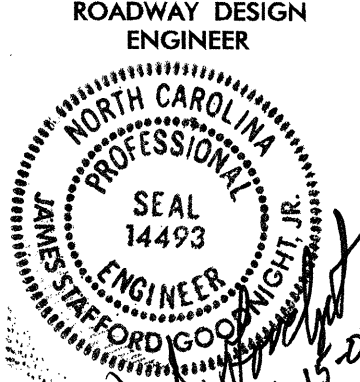
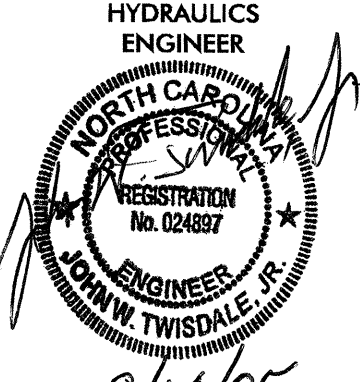


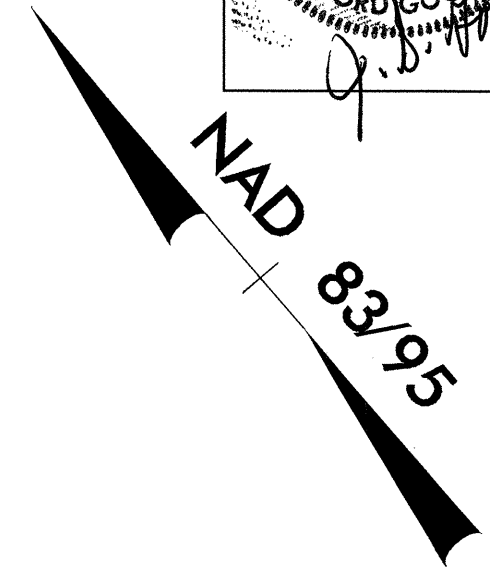
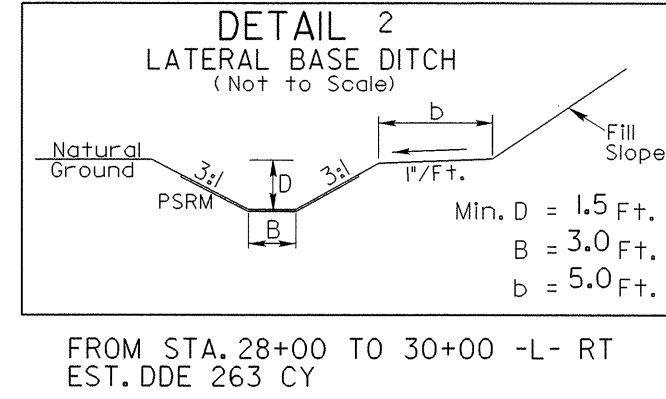
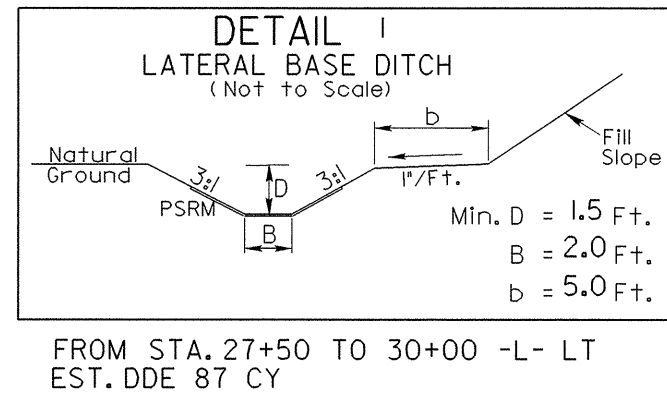
8/17/99

-L-

PI Sta 24+39.90	PI Sta 32+47.58
$\Delta = 47^{\circ} 47' 42.9" (LT)$	$\Delta = 10^{\circ} 46' 51.4" (LT)$
$D = 3^{\circ} 40' 22.1"$	$D = 5^{\circ} 43' 46.5"$
$L = 1,301.33'$	$L = 188.16'$
$T = 691.22'$	$T = 94.36'$
$R = 1,560.00'$	$R = 1,000.00'$

SEE PLANS FOR SUPERELEVATION AND RUNOFF

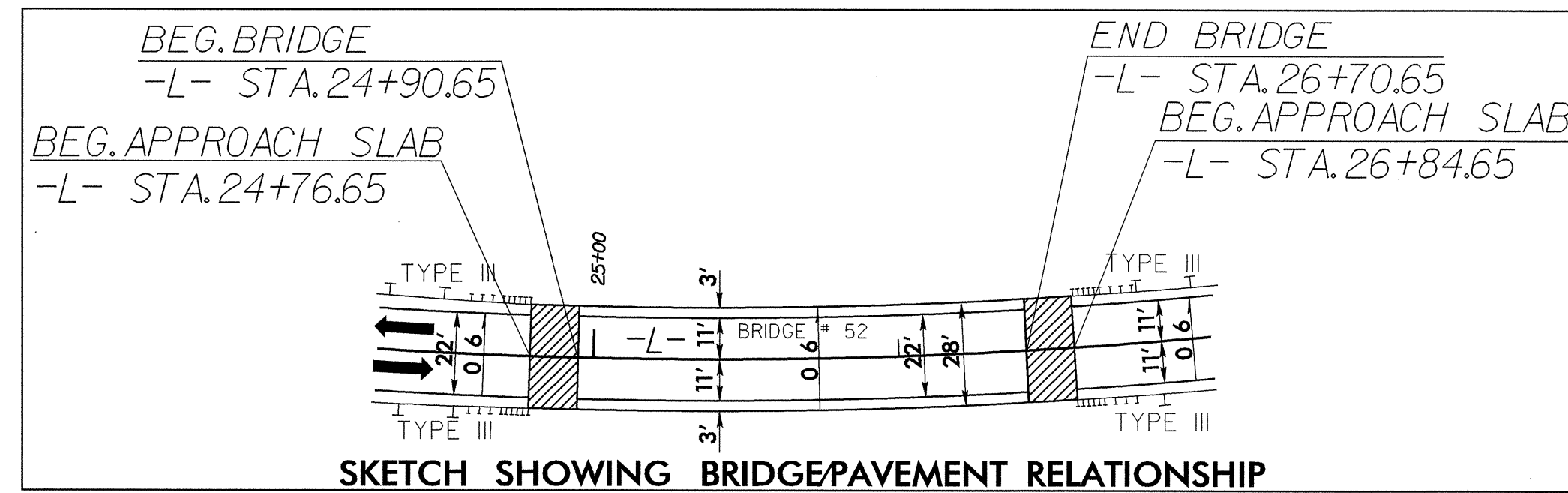
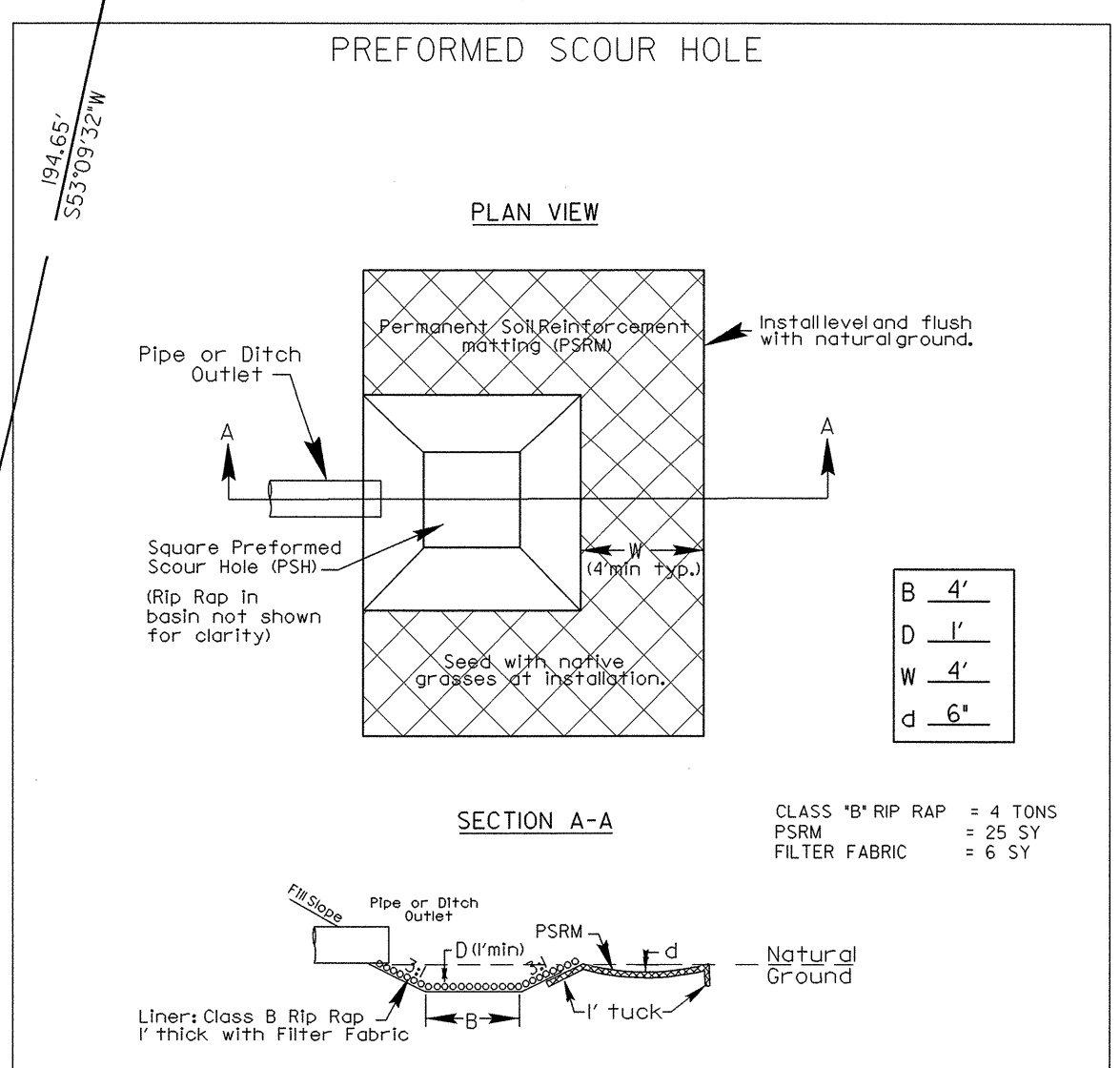
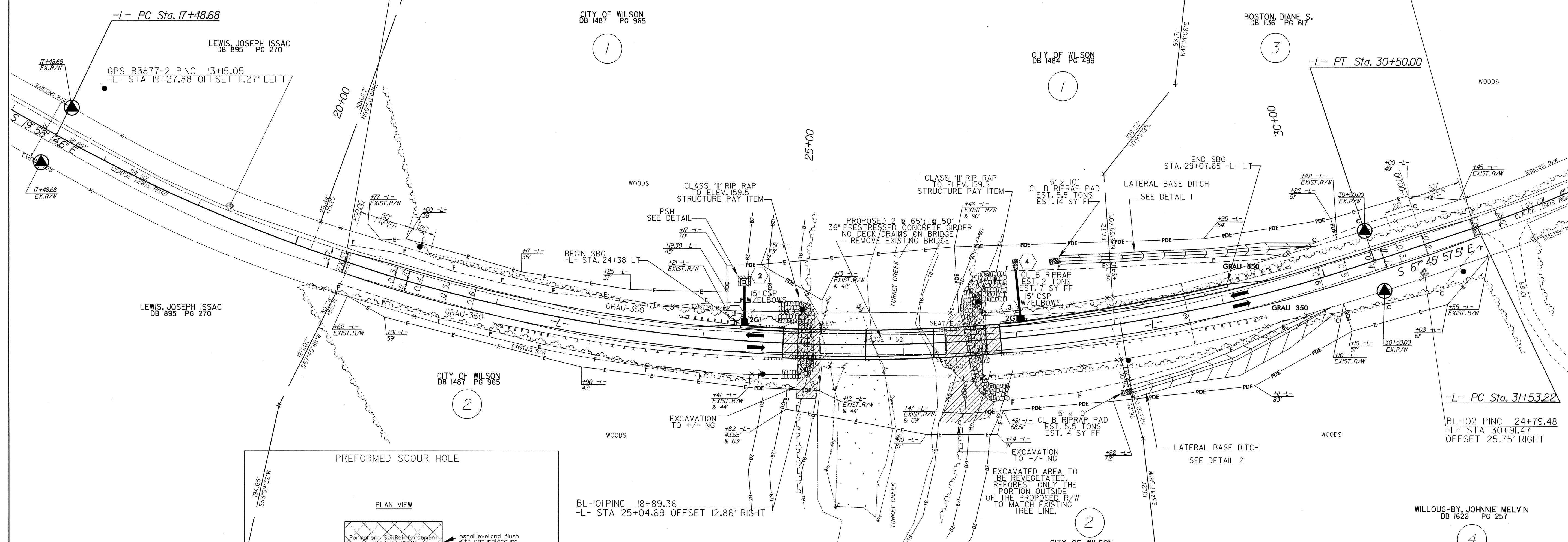
PROJECT REFERENCE NO. B-3877	SHEET NO. 4
RW SHEET NO.	
ROADWAY DESIGN ENGINEER	HYDRAULICS ENGINEER
	
	9/14/05



-L- STA. 20+50.00 BEGIN STATE PROJECT B-3877

-L- STA. 31+50.00 END STATE PROJECT B-3877

REVISIONS



SEE SHEET 5 FOR -L- PROFILE
SEE SHEETS S1 - S33 FOR STRUCTURE PLANS

14-SEP-2005 09:27
C:\PROJECTS\B3877\DWG\PSH4.dgn
LEWIS JOSEPH ISSAC