

5/14/99

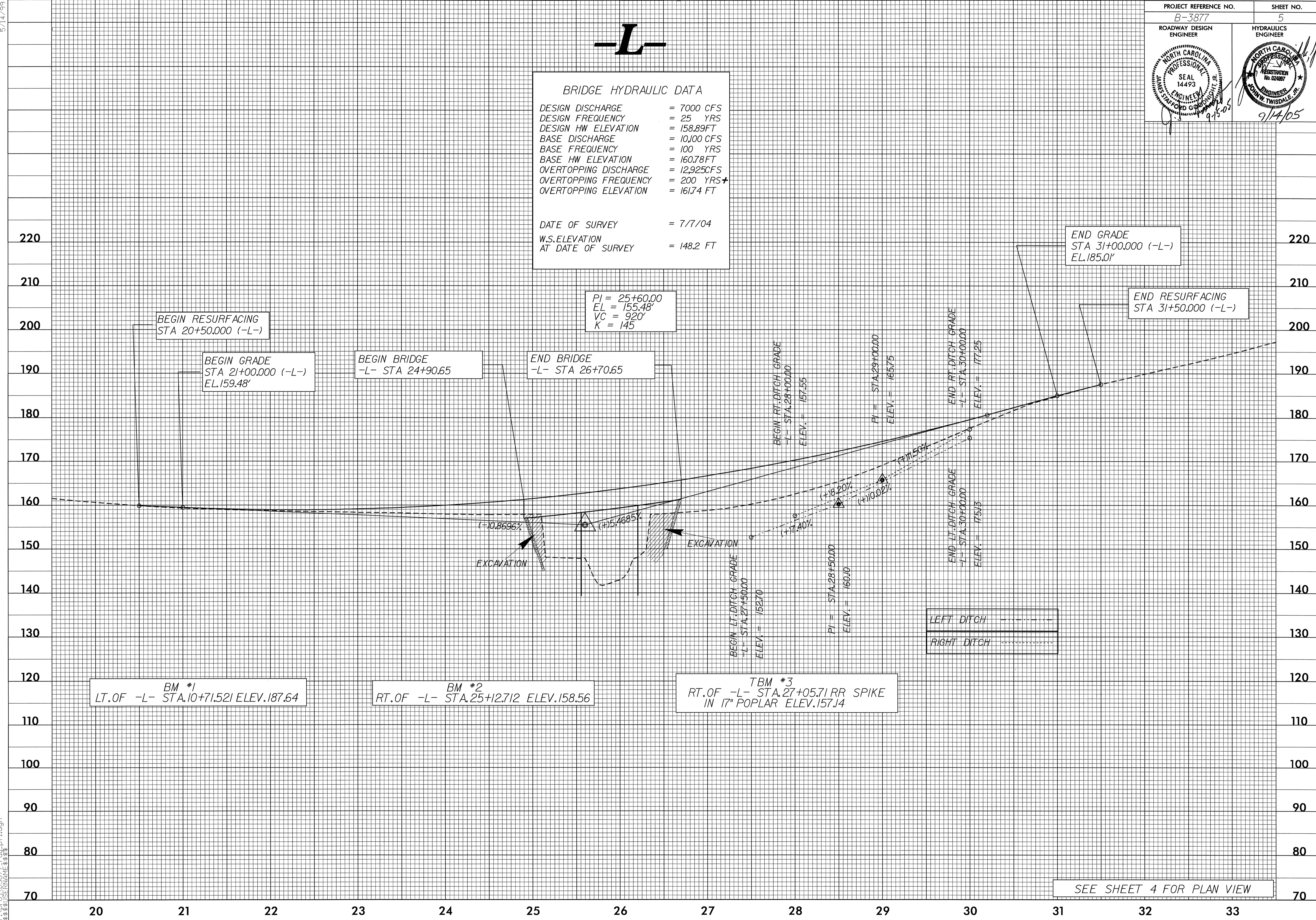
PROJECT REFERENCE NO. B-3877	SHEET NO. 5
ROADWAY DESIGN ENGINEER	HYDRAULICS ENGINEER
9/15/05	9/14/05

**-L-**

**BRIDGE HYDRAULIC DATA**

DESIGN DISCHARGE = 7000 CFS  
 DESIGN FREQUENCY = 25 YRS  
 DESIGN HW ELEVATION = 158.89 FT  
 BASE DISCHARGE = 10,100 CFS  
 BASE FREQUENCY = 100 YRS  
 BASE HW ELEVATION = 160.78 FT  
 OVERTOPPING DISCHARGE = 12,925 CFS  
 OVERTOPPING FREQUENCY = 200 YRS  
 OVERTOPPING ELEVATION = 161.74 FT

DATE OF SURVEY = 7/7/04  
 W.S. ELEVATION AT DATE OF SURVEY = 148.2 FT



BM #1  
 LT. OF -L- STA. 10+71.521 ELEV. 187.64

BM #2  
 RT. OF -L- STA. 25+12.712 ELEV. 158.56

TBM #3  
 RT. OF -L- STA. 27+05.71 RR SPIKE  
 IN 17" POPLAR ELEV. 157.14

SEE SHEET 4 FOR PLAN VIEW

14-SEP-2005 08:35  
 r:\proj\05\B-3877\rdm\p1.dgn  
 \$\$\$\$