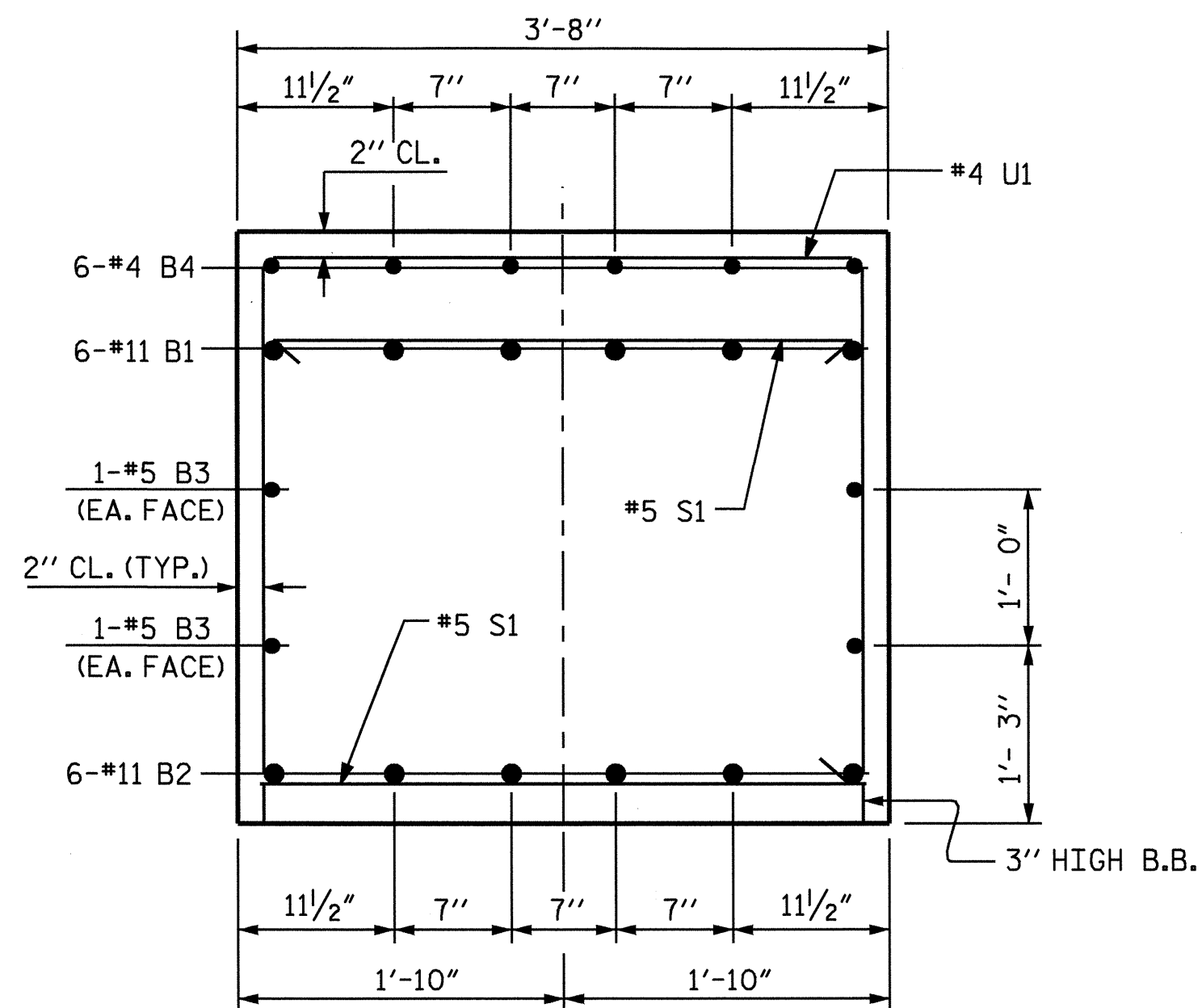
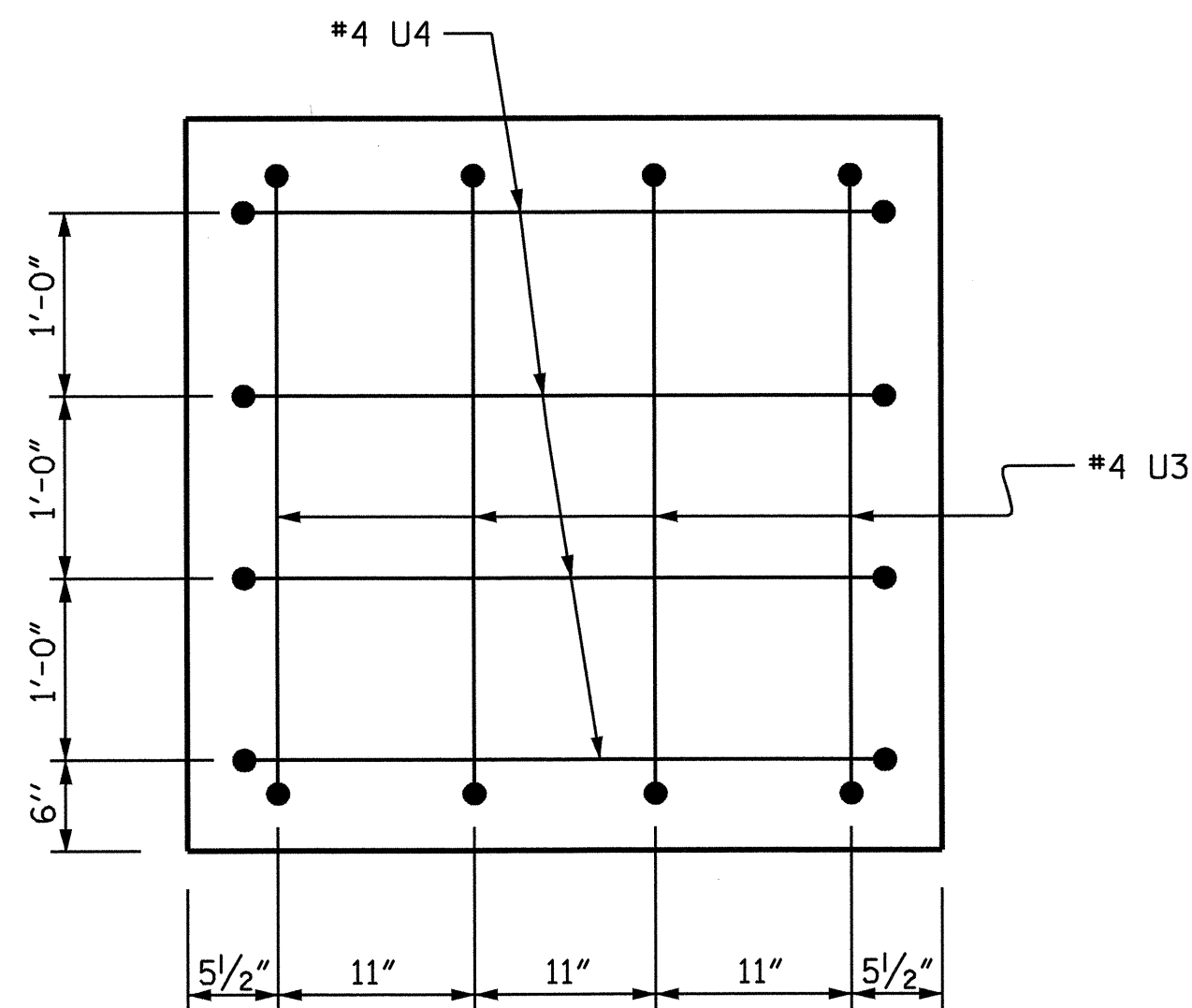


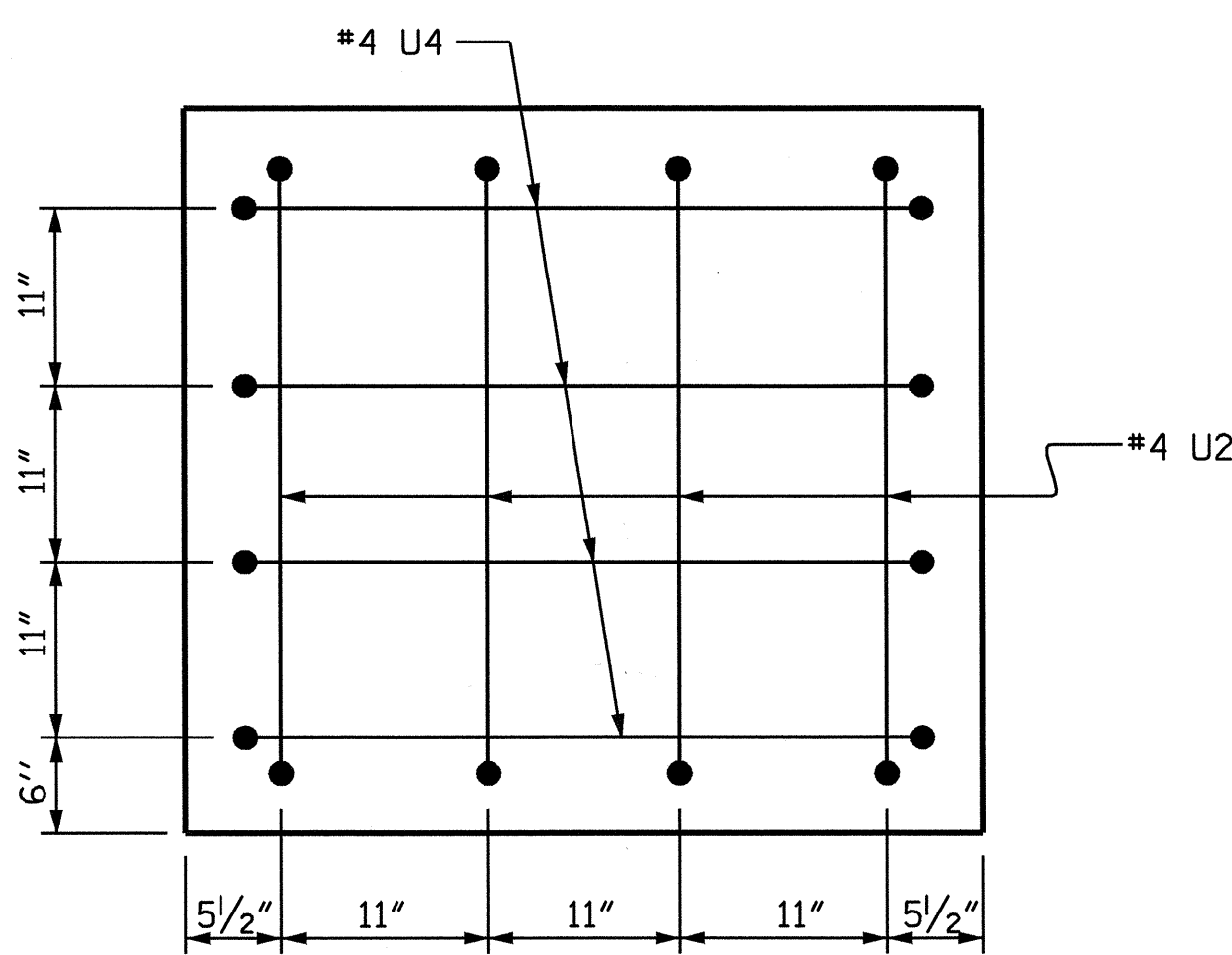
SECTION A-A



SECTION B-B

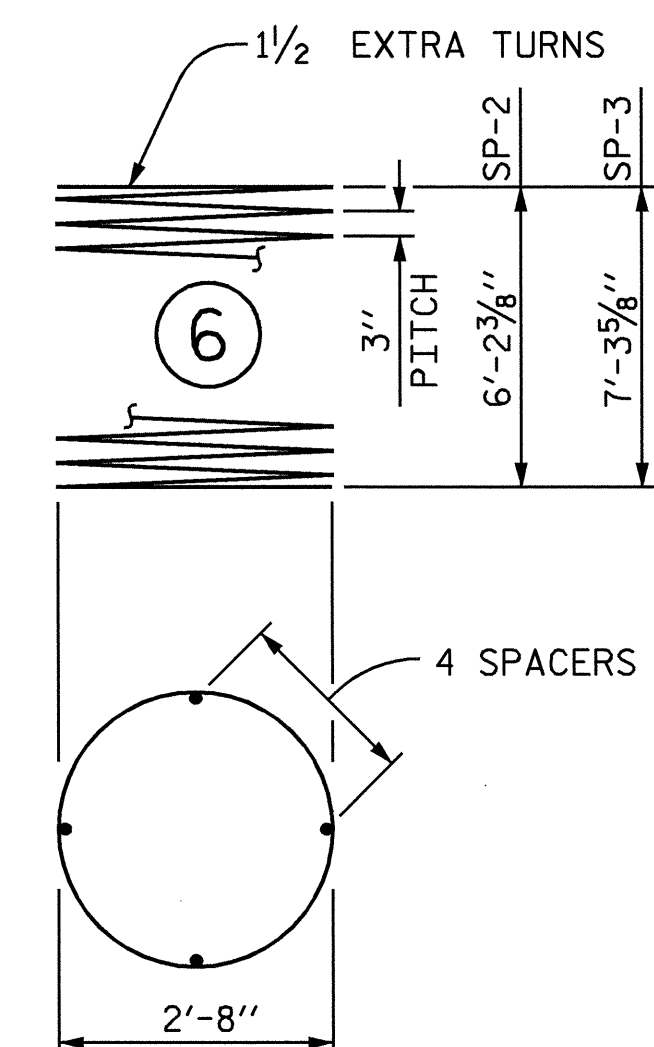
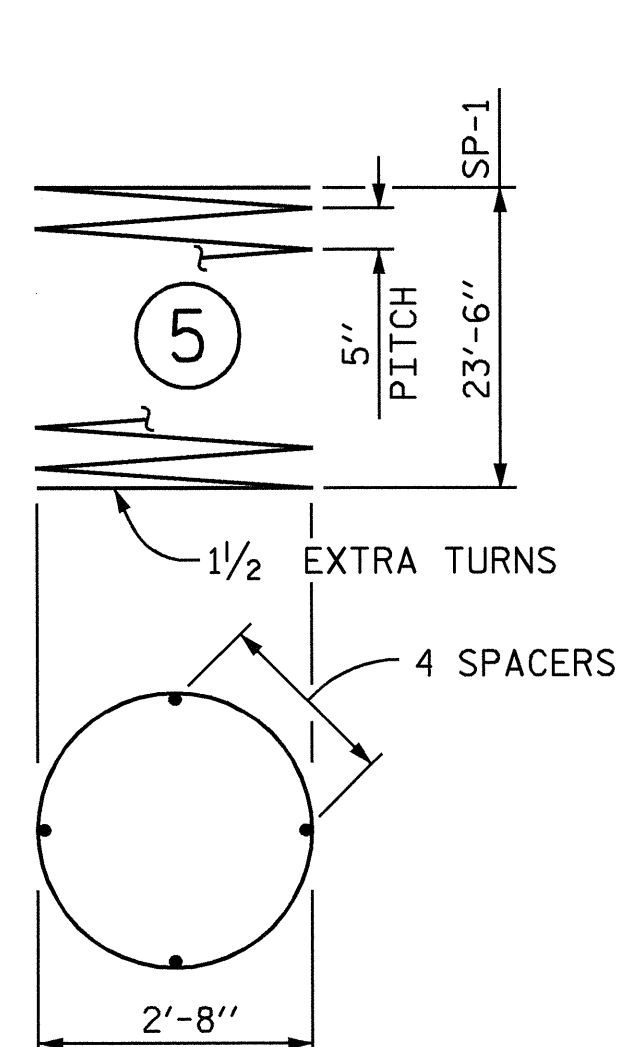
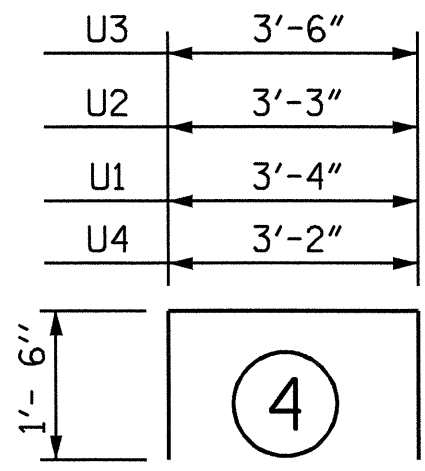
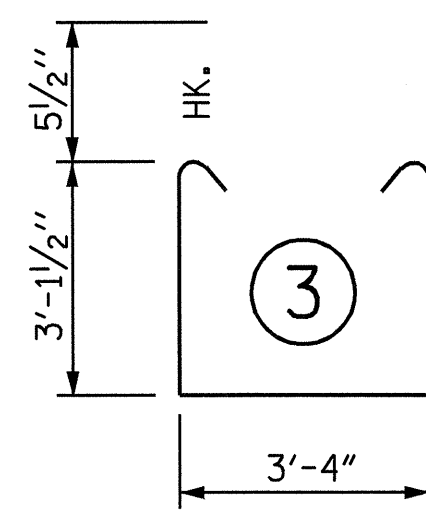
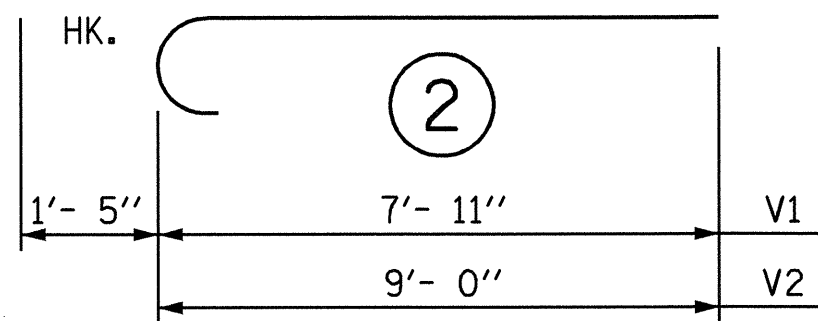
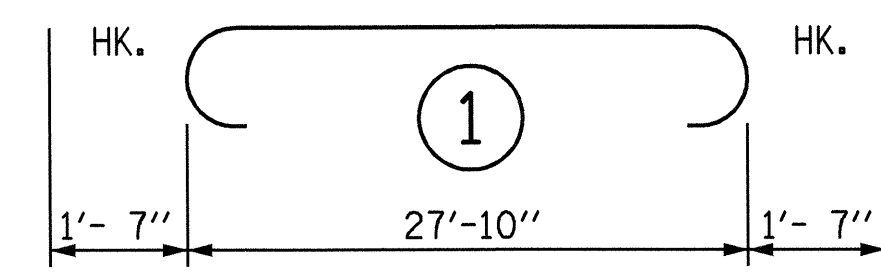


VIEW "X-X"



VIEW "Y-Y"

BAR TYPES



ALL BAR DIMENSIONS ARE OUT TO OUT.

BILL OF MATERIAL

BENT #1

BAR NO.	NO.	SIZE	TYPE	LENGTH	WEIGHT
B1	6	#11	1	31'-0"	988
B2	6	#11	STR	28'-0"	893
B3	4	#5	STR	28'-0"	117
B4	18	#4	STR	6'-1"	73
B5	6	#4	STR	2'-11"	12
M1	24	#10	STR	32'-6"	3356
S1	47	#5	3	10'-6"	515
U1	28	#4	4	6'-4"	118
U2	4	#4	4	6'-3"	17
U3	4	#4	4	6'-6"	17
U4	8	#4	4	6'-2"	33
V1	12	#10	2	9'-4"	482
V2	12	#10	2	10'-5"	538

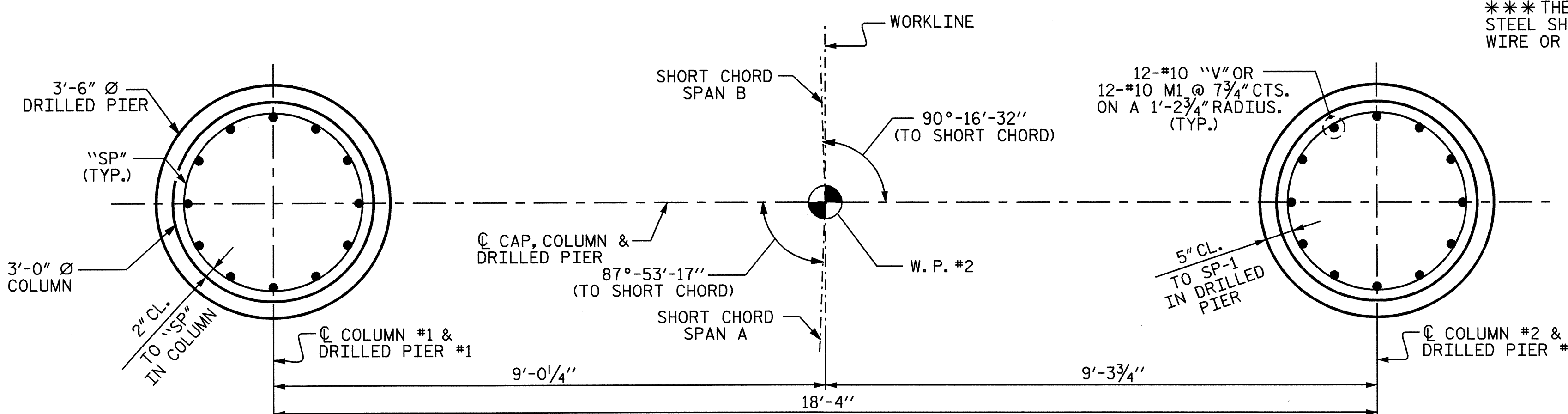
REINFORCING STEEL					=	7159 LBS
SP-1	2	***	5	485'-8"	1013	
SP-2	1	**	6	221'-10"	148	
SP-3	1	**	6	257'-5"	172	
SPIRAL COLUMN REINFORCING STEEL					=	1333 LBS

CLASS A CONCRETE BREAKDOWN				
POUR #2 (COLUMNS)				3.4 C.Y.
POUR #3 (CAP)				14.5 C.Y.
CLASS A CONCRETE TOTAL				17.9 C.Y.

DRILLED PIER

POUR #1 (DRILLED PIERS CONCRETE)	17.1 C.Y.
3'-6" Ø DRILLED PIER NOT IN SOIL LIN. FT.	17.0
3'-6" Ø DRILLED PIER IN SOIL LIN. FT.	31.0
PERMANENT STEEL CASING FOR 3'-6" Ø DRILLED PIER LIN. FT.	23.0

CROSSHOLE SONIC LOGGING	1 EACH
CSL TUBES	LIN. FT. 212
SID INSPECTION	1 EACH



PLAN OF COLUMNS & DRILLED PIERS

REINFORCING STEEL AND DIMENSIONS ARE TYPICAL FOR BOTH COLUMNS AND DRILLED PIERS.

*** THE SP-1 SPIRAL REINFORCING STEEL SHALL BE W31 OR D-31 COLD DRAWN STEEL WIRE OR #5 PLAIN OR DEFORMED BAR. ** THE SP-2 & SP-3 SPIRAL REINFORCING STEEL SHALL BE W20 OR D-20 COLD DRAWN STEEL WIRE OR #4 PLAIN OR DEFORMED BAR.

PROJECT NO. B-3877

NASH COUNTY

STATION: 25+80.65 -L-

SHEET 2 OF 2

STATE OF NORTH CAROLINA DEPARTMENT OF TRANSPORTATION RALEIGH

SUBSTRUCTURE BENT #1



REVISIONS						SHEET NO.
NO.	BY:	DATE:	NO.	BY:	DATE:	S-23
1			3			TOTAL SHEETS 33
2			4			

DRAWN BY: M. G. SHAIKH DATE: 02-07-05
CHECKED BY: J. B. WILSON/K.M.M. DATE: 08-05-05