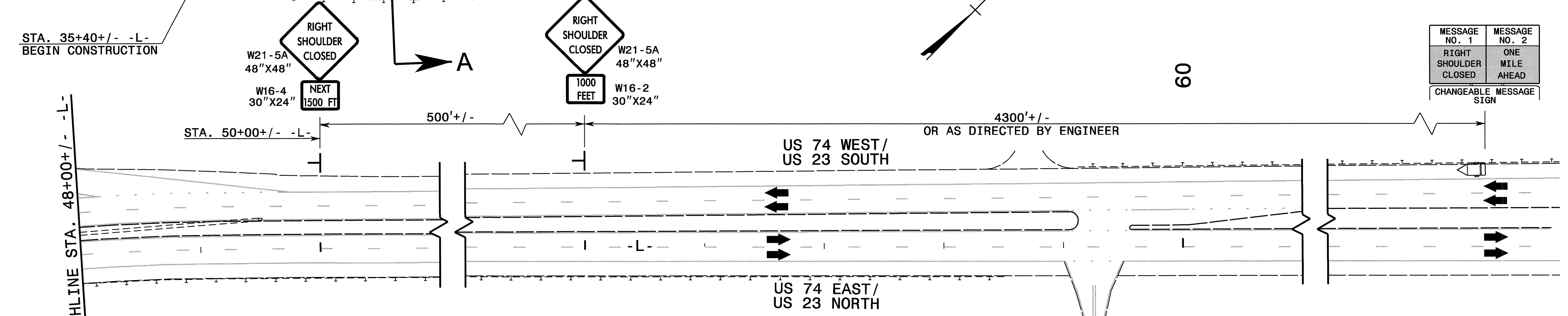
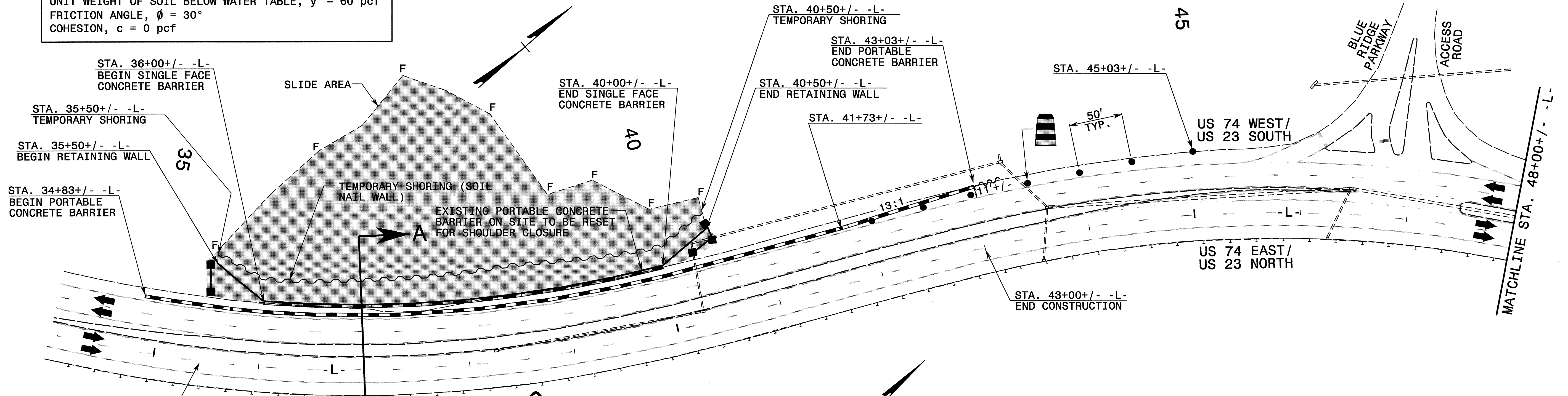
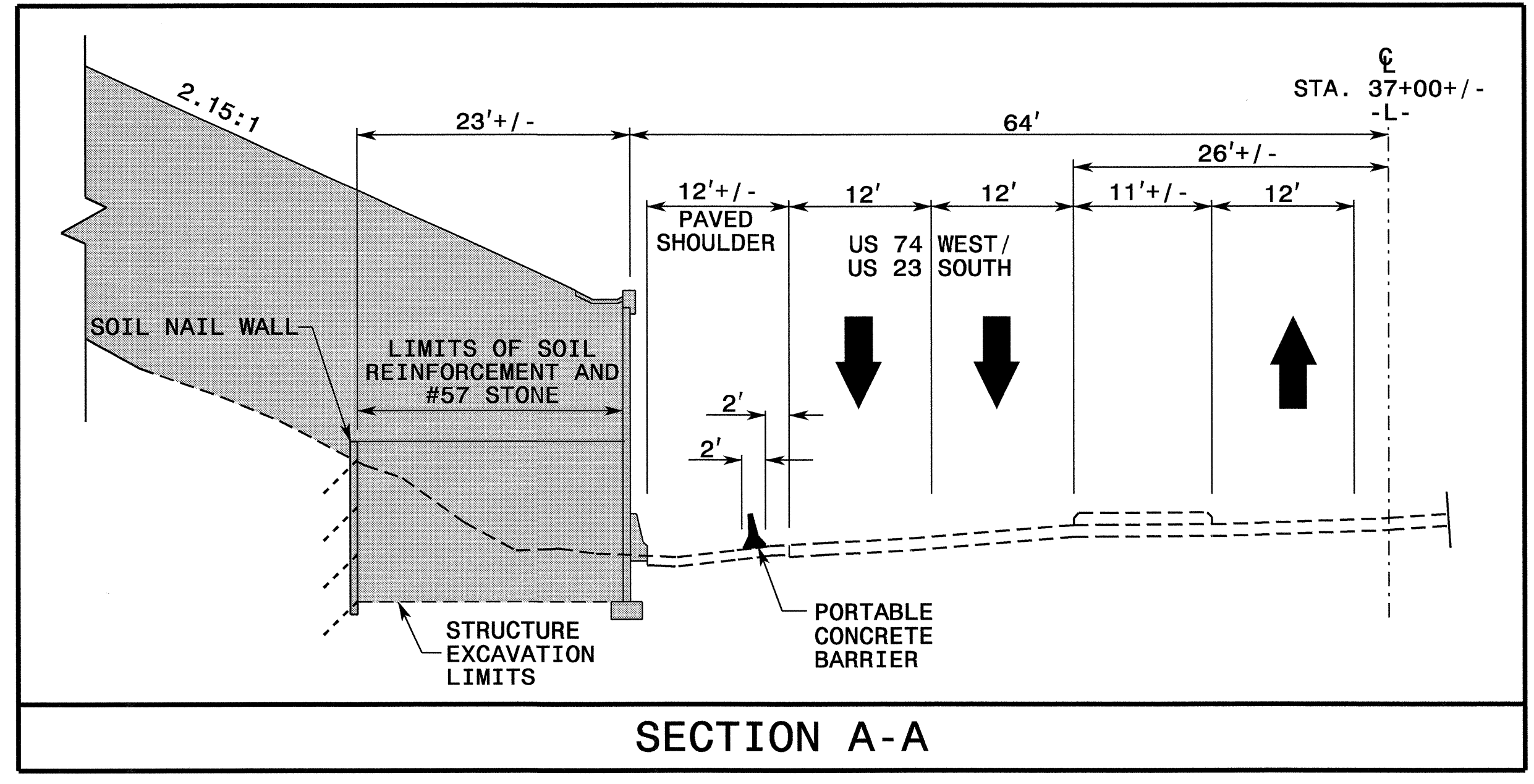


SITE 1

FOR DESIGN OF TEMPORARY SHORING, USE THE FOLLOWING SOIL PARAMETERS:
 UNIT WEIGHT OF SOIL ABOVE WATER TABLE, $\gamma = 120$ pcf
 UNIT WEIGHT OF SOIL BELOW WATER TABLE, $\gamma' = 60$ pcf
 FRICTION ANGLE, $\phi = 30^\circ$
 COHESION, $c = 0$ pcf



| | |
|-------------------------|----------------|
| MESSAGE NO. 1 | MESSAGE NO. 2 |
| RIGHT SHOULDER CLOSED | ONE MILE AHEAD |
| CHANGEABLE MESSAGE SIGN | |



APPROVED: *[Signature]* DATE: 7/1/05
 SEAL
 NORTH CAROLINA PROFESSIONAL ENGINEER
 SEAL 025895
 M. GREGORY M. MCDONALD

**SITE 1
 PHASE I
 SHOULDER CLOSURE**

| | | |
|------------------|--|-----------|
| SCALE: 1" = 50' | | REVISIONS |
| DATE: 05-31-05 | | |
| DWG. BY: SBC | | |
| DESIGN BY: SBC | | |
| REVIEWED BY: JPG | | |

05-JUL-2005 09:45
 \\ets-cet501\4733\top\4733-TC-top04.dgn
 AT TCU224169
 scotts