

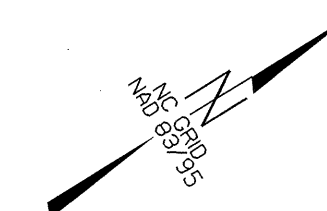
R-4733 SITE 1 SURVEY CONTROL SHEET

CONTROL DATA

BL	POINT	DESC.	NORTH	EAST	ELEVATION	L STATION	OFFSET
1	BL-1		637930.4710	785599.0360	3341.99	33+06.78	36.77 RT
2	BL-2		638175.4570	785825.8250	3345.88	36+32.53	46.59 RT
3	BL-3		638455.9540	785956.3960	3338.36	39+32.47	34.90 RT
4	BL-4		638788.7880	786059.3050	3328.21	42+79.47	35.99 RT
103	GPS-103		639178.6700	786123.2940	3322.31	46+52.37	77.95 LT
104	GPS-104		639717.8430	786642.3930	3300.70	53+87.62	76.09 LT

.....
 BM1 ELEVATION = 3342.40
 N 637988 E 785671
 L STATION 5+91 14 RIGHT
 8" SPIKE IN BASE OF 7' POPLAR

.....
 BM2 ELEVATION = 3324.00
 N 638880 E 786097
 L STATION 15+87 23 RIGHT
 8" SPIKE IN BASE OF 16' POPLAR

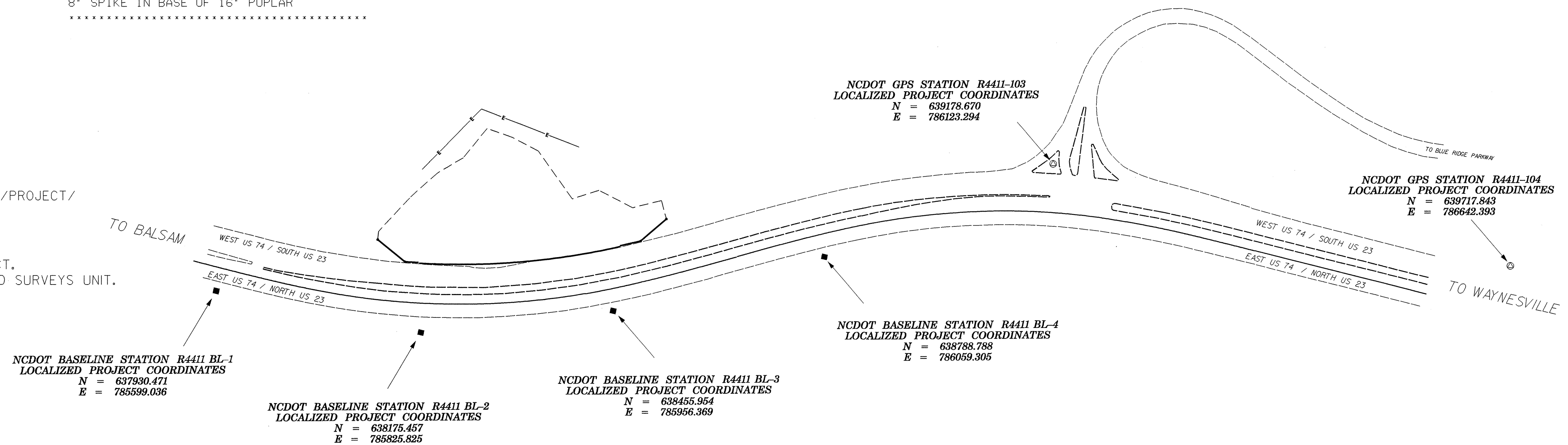


NOTES:

I. THE CONTROL DATA FOR THIS PROJECT CAN BE FOUND ELECTRONICALLY BY SELECTING PROJECT CONTROL DATA AT:

HTTP:\WWW.DOH.DOT.STATE.NC.US/PRECONSTRUCT/HIGHWAY/LOCATION/PROJECT/
 FILE: r4733_LS_CONTROL_040421.TXT

SITE CALIBRATION INFORMATION HAS NOT BEEN PROVIDED FOR THIS PROJECT. IF FURTHER INFORMATION IS NEEDED, PLEASE CONTACT THE LOCATION AND SURVEYS UNIT.



DATUM DESCRIPTION

THE LOCALIZED COORDINATE SYSTEM DEVELOPED FOR THIS PROJECT IS BASED ON THE STATE PLANE COORDINATES ESTABLISHED BY NCDOT FOR MONUMENT "GPS 103"
 WITH NAD 1983/95 STATE PLANE GRID COORDINATES OF
 NORTHING: 639178.670(f1) EASTING: 786123.294(f1)
 THE AVERAGE COMBINED GRID FACTOR USED ON THIS PROJECT
 (GROUND TO GRID) IS: 0.999724310
 THE N.C. LAMBERT GRID BEARING AND
 LOCALIZED HORIZONTAL GROUND DISTANCE FROM
 "GPS 103" TO -L- STATION 35+50.00 IS
 S 25° 00'24.81" W 1086.810'
 ALL LINEAR DIMENSIONS ARE LOCALIZED HORIZONTAL DISTANCES
 VERTICAL DATUM USED IS NAVD 88

⊙ INDICATES GEODETIC CONTROL MONUMENTS USED OR SET FOR HORIZONTAL PROJECT CONTROL BY THE NCDOT LOCATION AND SURVEYS UNIT.

PROJECT CONTROL ESTABLISHED UTILIZING GLOBAL POSITIONING SYSTEM.

NETWORK ESTABLISHED FROM EXISTING HARN MONUMENTATION.

NOTE: DRAWING NOT TO SCALE