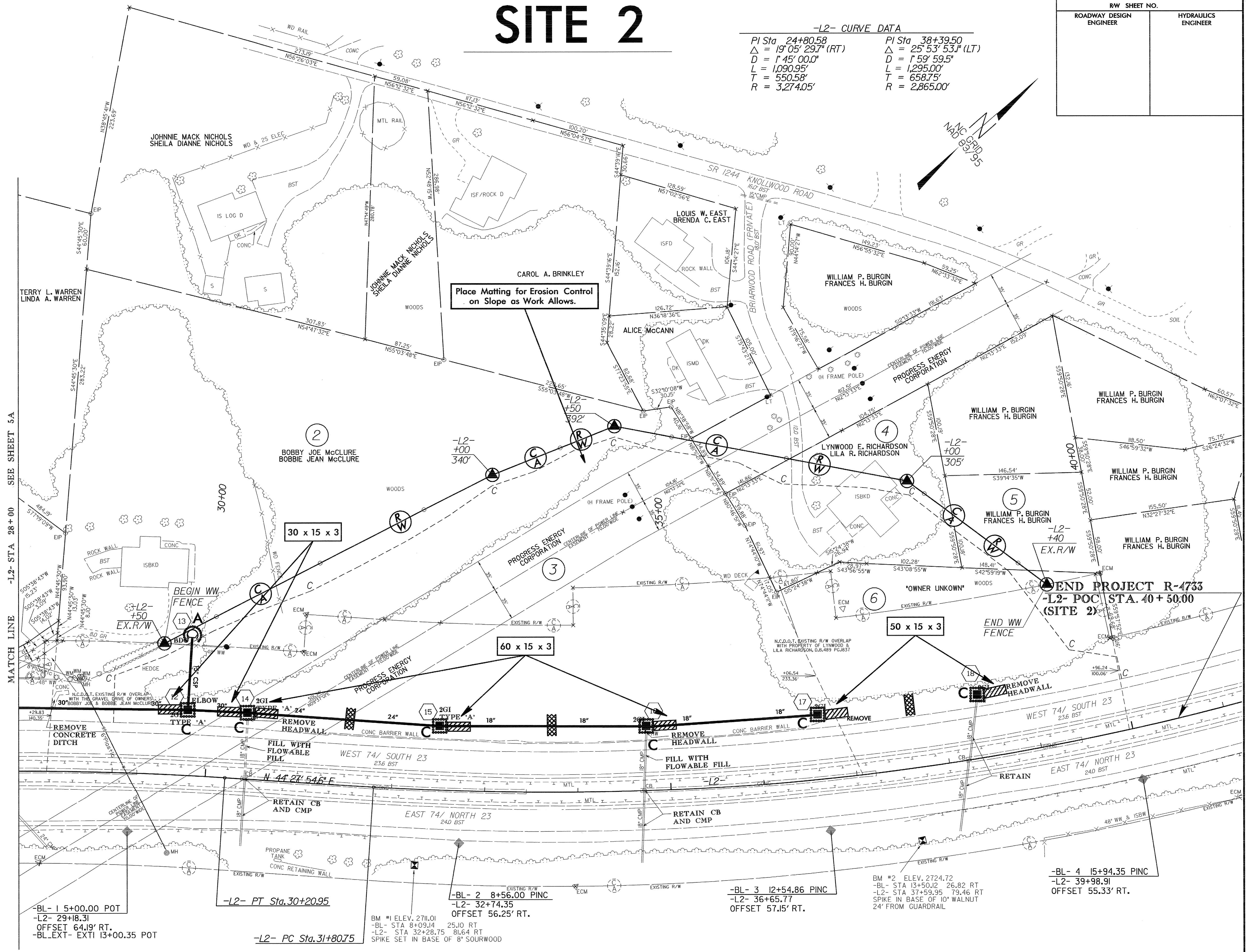
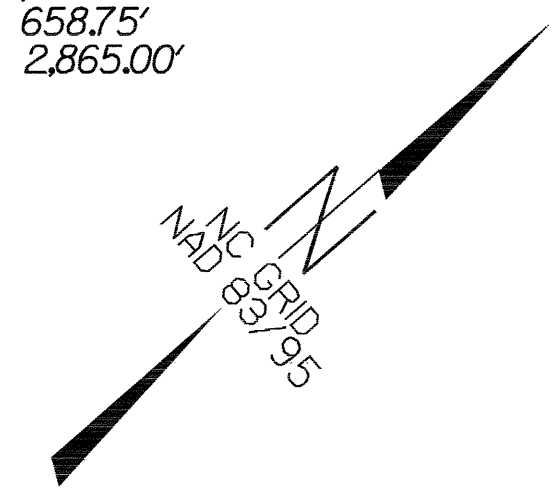


# SITE 2

PROJECT REFERENCE NO. R-4733	SHEET NO. EC-9/CONST.5
RW SHEET NO.	
ROADWAY DESIGN ENGINEER	HYDRAULICS ENGINEER

-L2- CURVE DATA

PI Sta 24+80.58	PI Sta 38+39.50
$\Delta = 19^{\circ} 05' 29.7''$ (RT)	$\Delta = 25^{\circ} 53' 53.1''$ (LT)
D = 1'45' 00.0"	D = 1'59' 59.5"
L = 1,090.95'	L = 1,295.00'
T = 550.58'	T = 658.75'
R = 3,274.05'	R = 2,865.00'



MATCH LINE -L2- STA 28+00 SEE SHEET 5A

Place Matting for Erosion Control on Slope as Work Allows.

END PROJECT R-4733  
-L2- POC STA. 40+50.00  
(SITE 2)

-BL- 1 5+00.00 POT  
-L2- 29+18.31  
OFFSET 64.19' RT.  
-BL-EXT- EXTI 13+00.35 POT

-L2- PC Sta. 31+80.75

BM #1 ELEV. 2711.01  
-BL- STA 8+09.14 25.10 RT  
-L2- STA 32+28.75 81.64 RT  
SPIKE SET IN BASE OF 8" SOURWOOD

-BL- 2 8+56.00 PINC  
-L2- 32+74.35  
OFFSET 56.25' RT.

-BL- 3 12+54.86 PINC  
-L2- 36+65.77  
OFFSET 57.15' RT.

BM #2 ELEV. 2724.72  
-BL- STA 13+50.12 26.82 RT  
-L2- STA 37+59.95 79.46 RT  
SPIKE IN BASE OF 10" WALNUT  
24" FROM GUARDRAIL

-BL- 4 15+94.35 PINC  
-L2- 39+98.91  
OFFSET 55.33' RT.