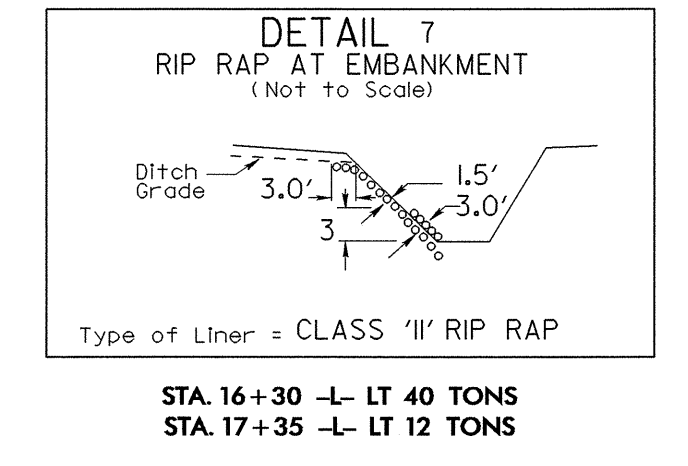
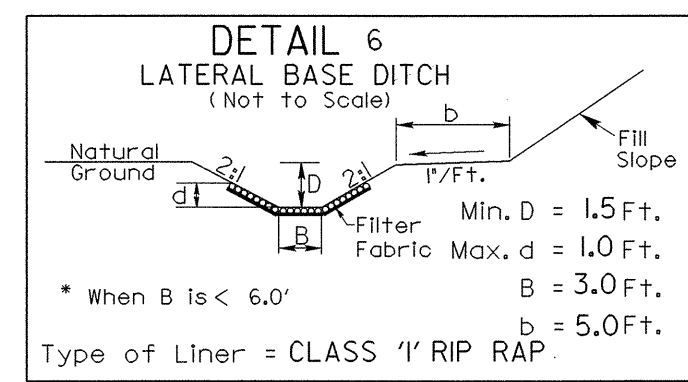
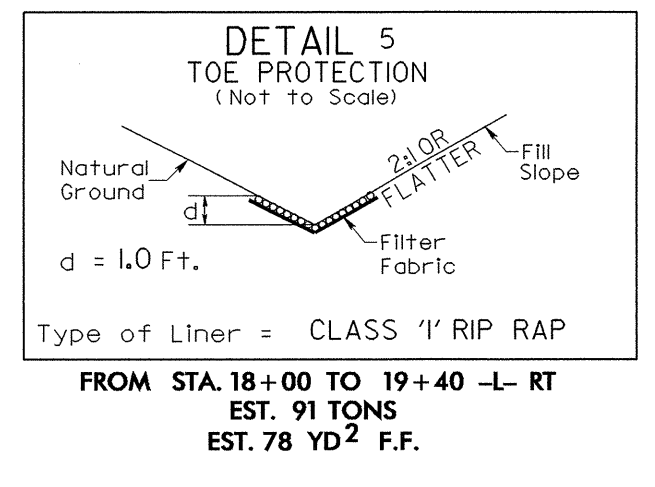
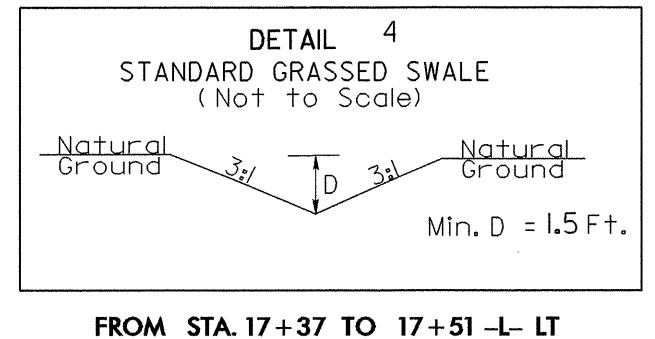
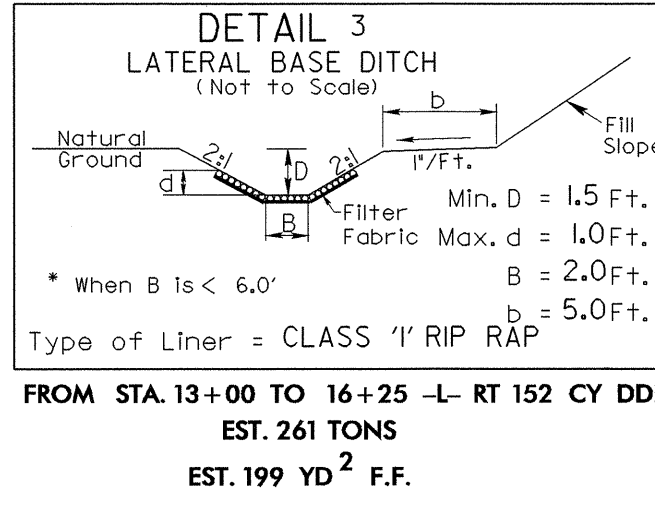
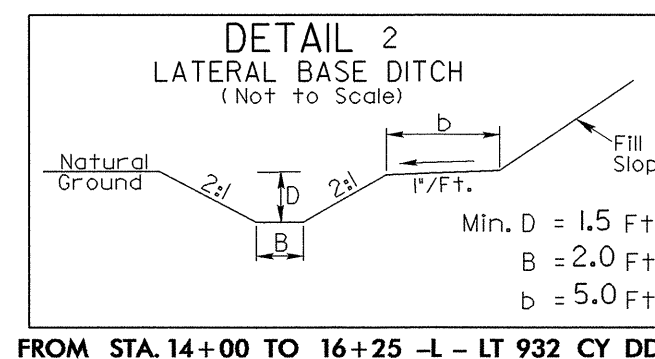
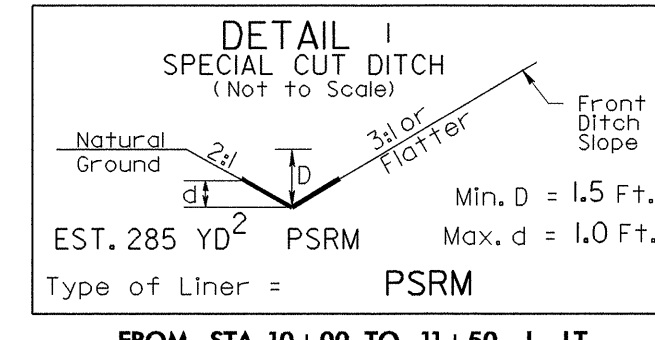
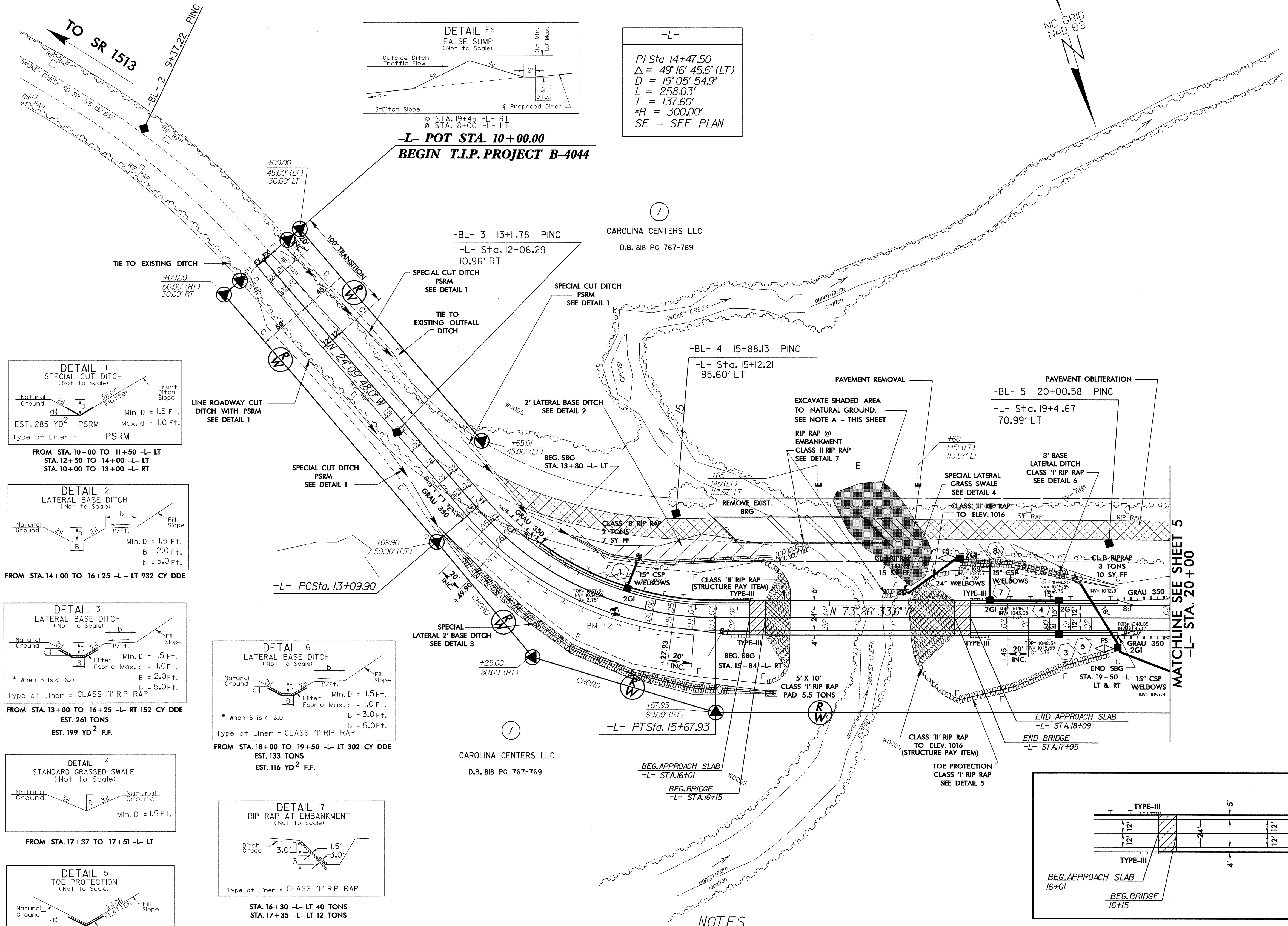


- DENOTES PAVEMENT OBLITERATION
- DENOTES PAVEMENT REMOVAL
- DENOTES BRIDGE APPROACH SLAB
- AREA TO BE EXCAVATED TO NATURAL GROUND

8/17/99
 REVISIONS
 13-SEP-2005 16:08
 P:\Roadway\proj\B4044_rdy_psh04.dgn
 \$\$\$\$LISTERAMF\$\$\$\$



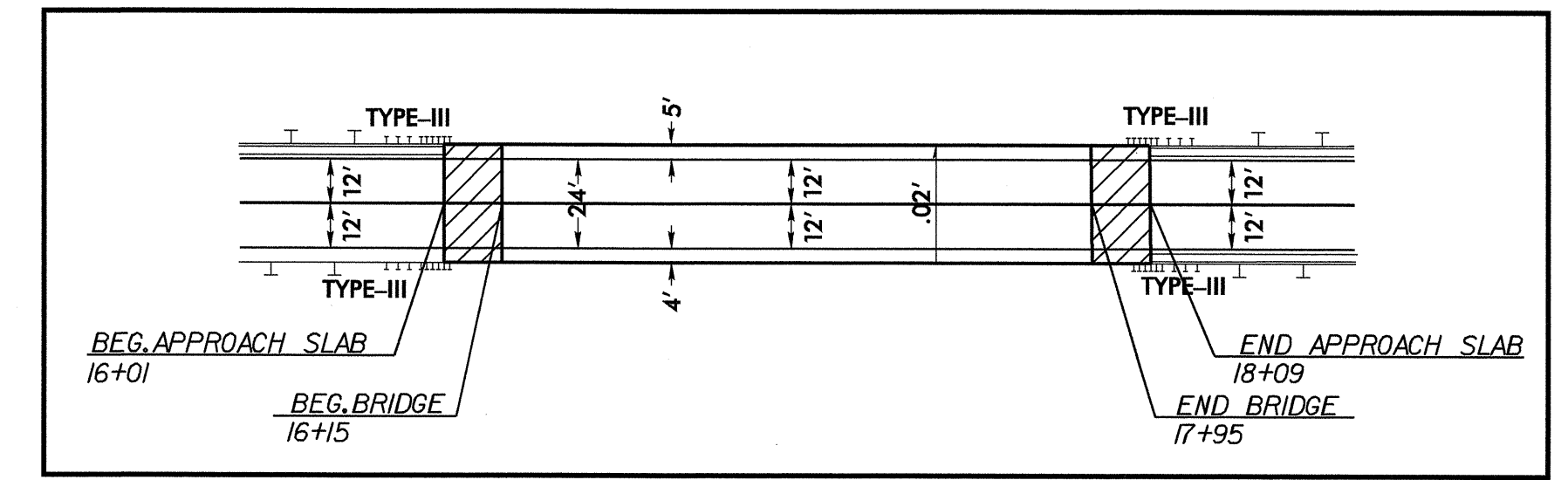
-L-

PI Sta 14+47.50
 $\Delta = 49^\circ 16' 45.6''$ (LT)
 $D = 19^\circ 05' 54.9''$
 $L = 258.03'$
 $T = 137.60'$
 $*R = 300.00'$
 SE = SEE PLAN

*DESIGN EXCEPTION REQUIRED FOR DESIGN SPEED (35 MPH),
 MINIMUM HORIZONTAL CURVE RADIUS (300') AND HORIZONTAL
 STOPPING SIGHT DISTANCE (165')

NOTES

A: AREA TO BE GRADED TO NATURAL
 GROUND PER THE DISCRETION OF THE ENGINEER.



MATCHLINE SEE SHEET 5
-L- STA. 20+00