

RW SHEET NO.

ROADWAY DESIGN ENGINEER	HYDRAULICS ENGINEER

9/14/05

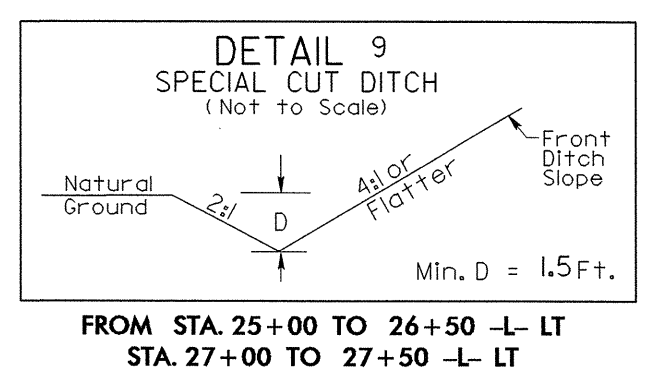
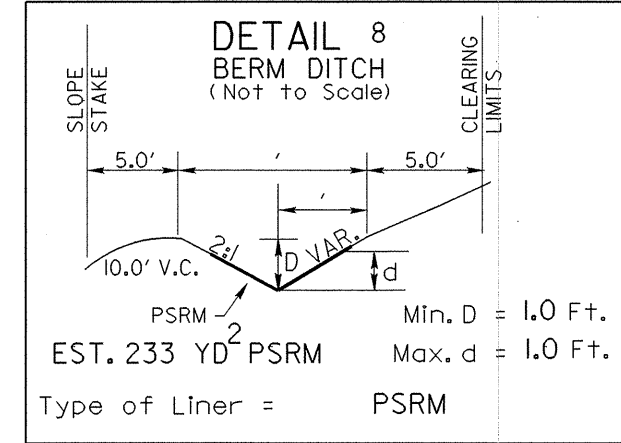
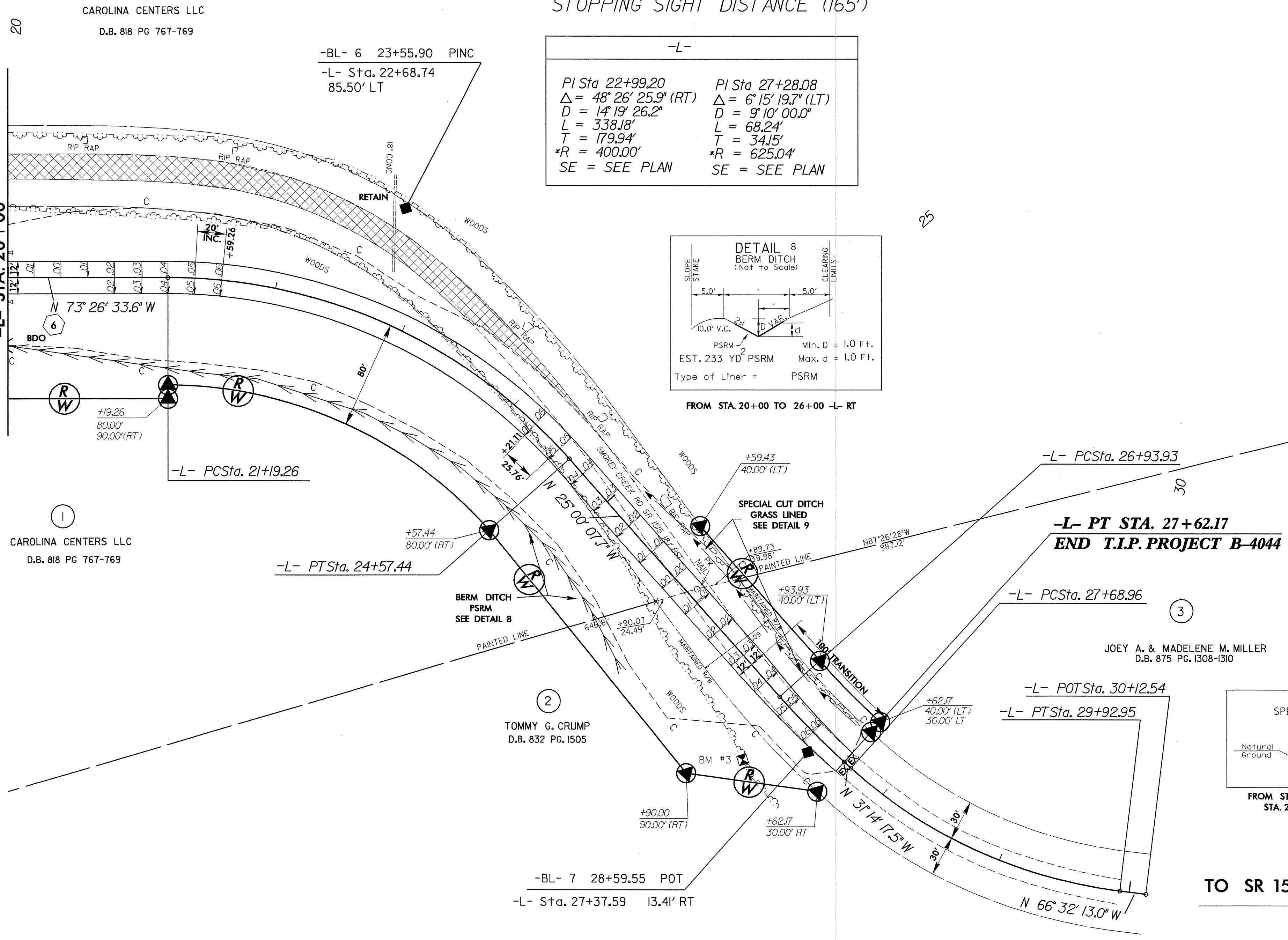
*DESIGN EXCEPTION REQUIRED FOR DESIGN SPEED (35 MPH),
MINIMUM HORIZONTAL CURVE RADIUS (300') AND HORIZONTAL STOPPING SIGHT DISTANCE (165')

-L-	
PI Sta 22+99.20	PI Sta 27+28.08
$\Delta = 48^{\circ} 26' 25.9" (RT)$	$\Delta = 6^{\circ} 15' 19.7" (LT)$
$D = 14^{\circ} 19' 26.2"$	$D = 9^{\circ} 10' 00.0"$
$L = 338.18'$	$L = 68.24'$
$T = 179.94'$	$T = 34.15'$
* $R = 400.00'$	* $R = 625.04'$
SE = SEE PLAN	SE = SEE PLAN



DENOTES PAVEMENT OBLITERATION

MATCHLINE SEE SHEET 4
-L- STA. 20+00



TO SR 1514

FOR PROFILE OF -L- SEE SHEET 6

REVISIONS

8/17/99

13-SEP-2005 15:54
P:\Food\w01\pco\1b4044.rdj.psh05.dgn
\$\$\$\$USERNAME\$\$\$\$