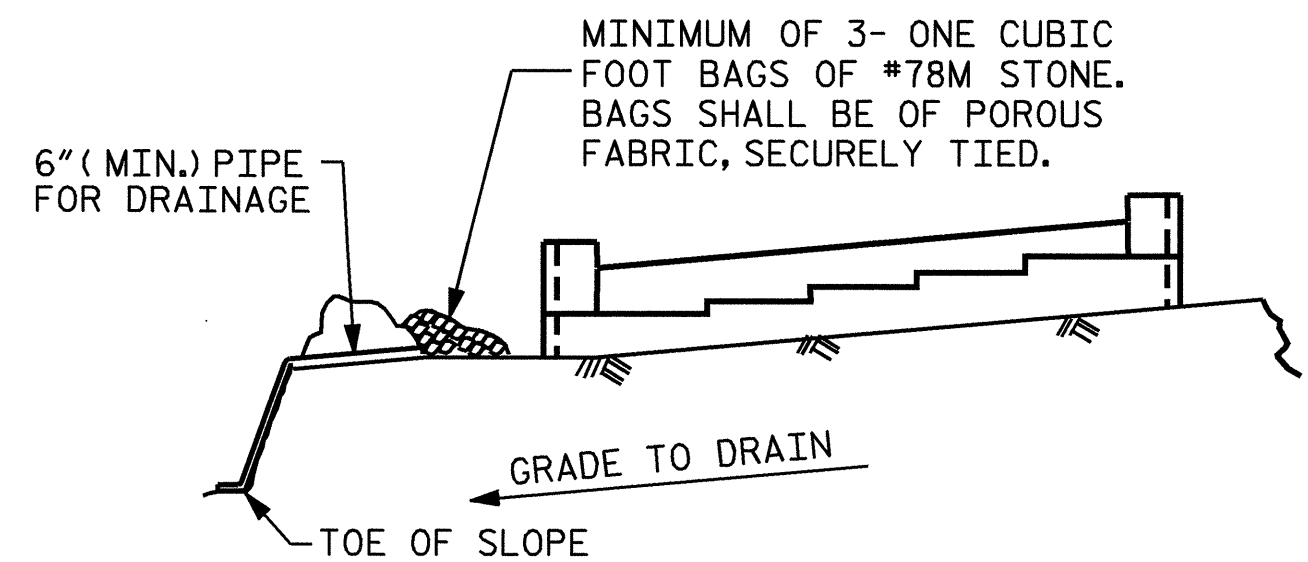
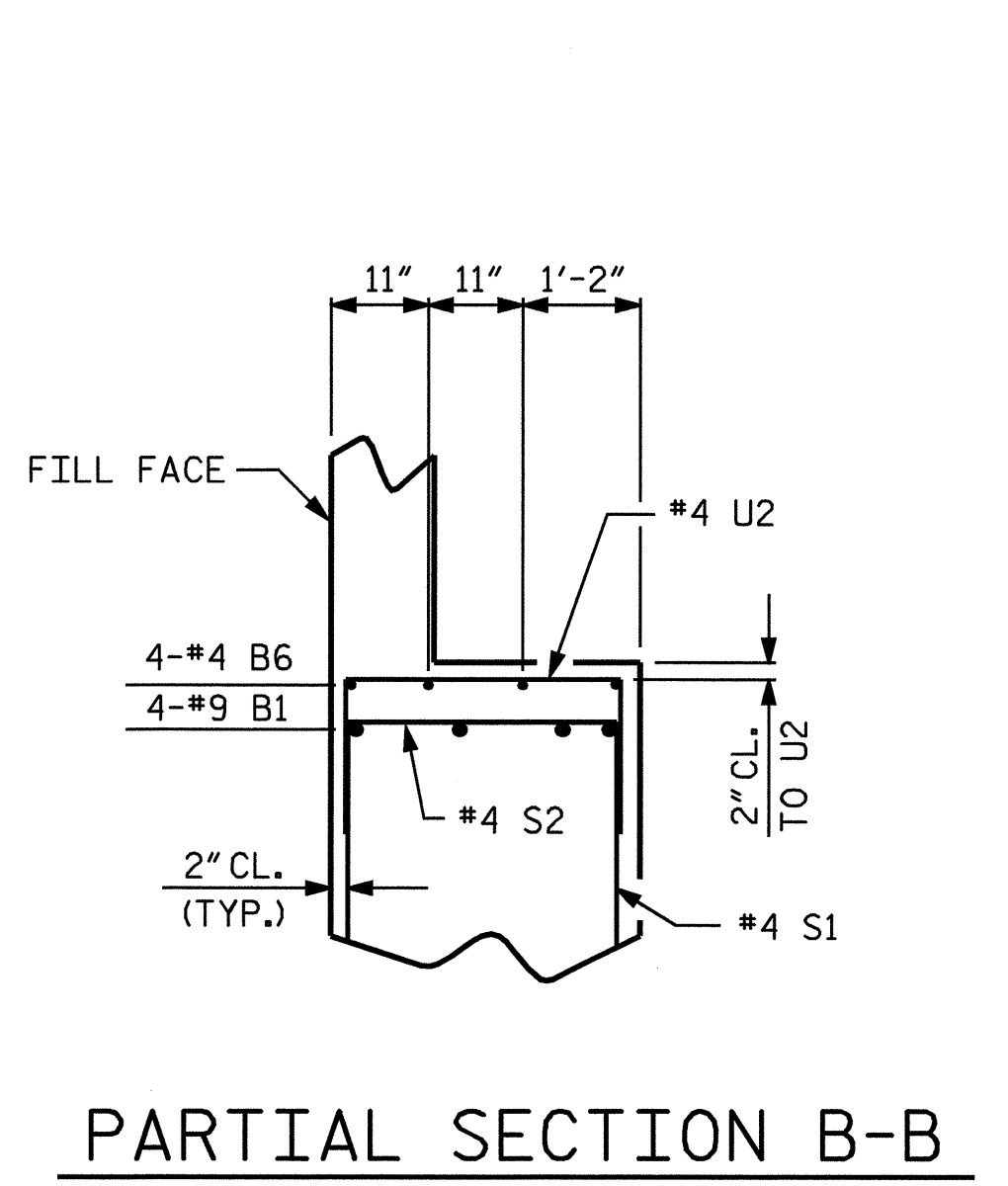


BILL OF MATERIAL					
END BENT No. 2					
BAR	NO.	SIZE	TYPE	LENGTH	WEIGHT
B1	8	9		44'-3"	1204
B2	8	4	STR	22'-2"	118
B3	4	5	STR	41'-11"	175
B4	10	4	STR	2'-8"	18
B5	4	4	STR	3'-3"	9
B6	4	4	STR	17'-9"	47
H1	18	5		11'-0"	207
H2	20	5		11'-6"	240
K1	20	4	STR	22'-2"	296
K2	8	4	STR	2'-7"	14
S1	34	4		7'-8"	174
S2	34	4		3'-5"	78
S3	18	4		6'-6"	78
U1	37	4		4'-8"	115
U2	15	4		6'-8"	67
V1	74	5	STR	6'-7"	508
V2	28	5	STR	8'-0"	234
V3	30	5	STR	8'-8"	271
REINFORCING STEEL (LBS.)					3853
CLASS A CONCRETE BREAKDOWN					
POUR #1 (CAP & LOWER WINGS)					14.9 C.Y.
POUR #2 (BACKWALL & UPPER WINGS)					11.9 C.Y.
TOTAL CLASS A CONCRETE					26.8 C.Y.
HP 12 x 53 STEEL PILES NO. = 9 LIN. FEET = 225					



MINIMUM OF 3- ONE CUBIC FOOT BAGS OF #78M STONE. BAGS SHALL BE OF POROUS FABRIC, SECURELY TIED.

6" (MIN.) PIPE FOR DRAINAGE

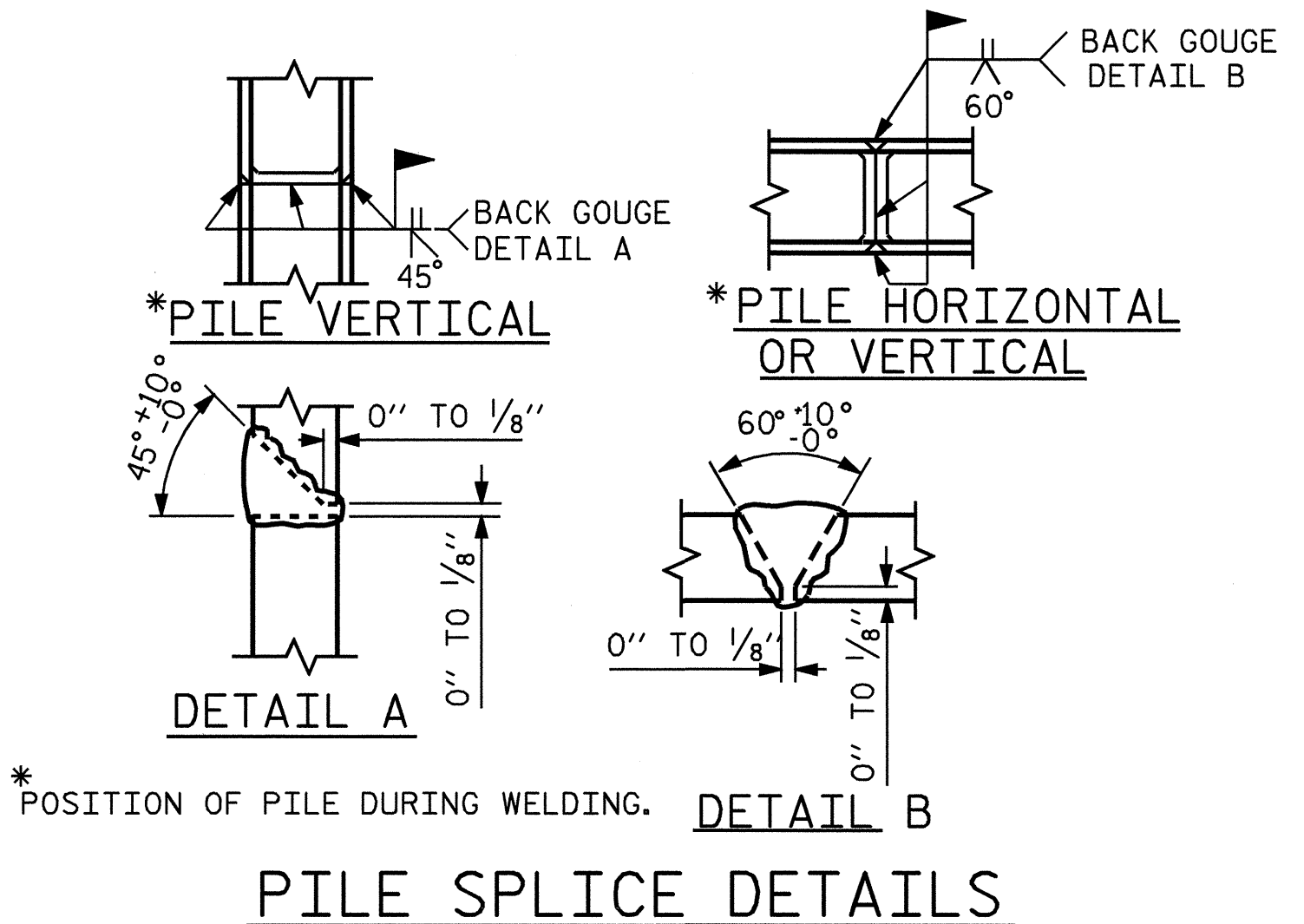
TOE OF SLOPE

GRADE TO DRAIN

BAGGED STONE AND PIPE SHALL BE PLACED IMMEDIATELY AFTER COMPLETION OF END BENT EXCAVATION. PIPE MAY BE EITHER CONCRETE, CORRUGATED STEEL, CORRUGATED ALUMINUM ALLOY, OR CORRUGATED PLASTIC. PERFORATED PIPE WILL NOT BE ALLOWED.

BAGGED STONE SHALL REMAIN IN PLACE UNTIL THE ENGINEER DIRECTS THAT IT BE REMOVED. THE CONTRACTOR SHALL REMOVE AND DISPOSE OF SILT ACCUMULATIONS AT BAGGED STONE WHEN SO DIRECTED BY THE ENGINEER. BAGS SHALL BE REMOVED AND REPLACED WHENEVER THE ENGINEER DETERMINES THAT THEY HAVE DETERIORATED AND LOST THEIR EFFECTIVENESS.

NO SEPARATE PAYMENT WILL BE MADE FOR THIS WORK AND THE ENTIRE COST OF THIS WORK SHALL BE INCLUDED IN THE UNIT CONTRACT PRICE BID FOR THE SEVERAL PAY ITEMS.



PROJECT NO. B-4044
BURKE COUNTY
 STATION: 17+05.00 -L-

SHEET 3 OF 3

STATE OF NORTH CAROLINA
 DEPARTMENT OF TRANSPORTATION
 RALEIGH

SUBSTRUCTURE
 END BENT No. 2

REVISIONS						SHEET NO.
NO.	BY:	DATE:	NO.	BY:	DATE:	S-28
1			3			TOTAL SHEETS
2			4			35

DRAWN BY : P.E. LACKEY DATE : 1/05
 CHECKED BY : S.B. WILLIAMS DATE : 5/05

