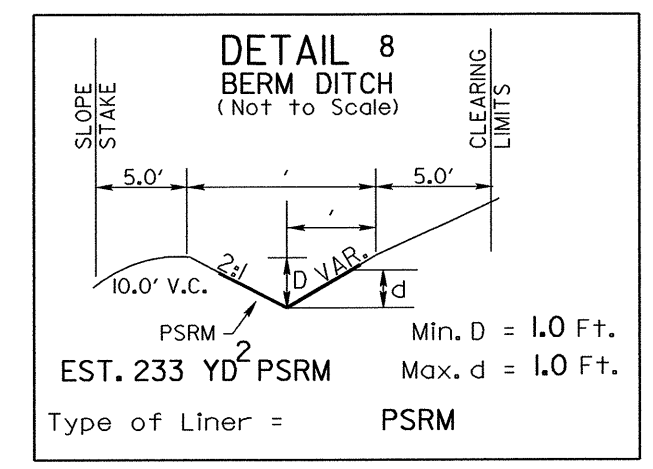


PROJECT REFERENCE NO. B-4044	SHEET NO. EC-6/CONST.5
RW SHEET NO.	
ROADWAY DESIGN ENGINEER	HYDRAULICS ENGINEER

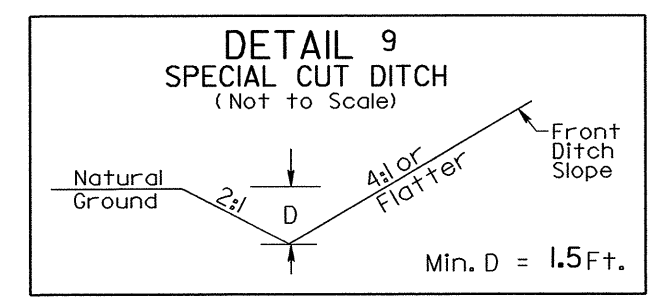
▨ DENOTES PAVEMENT OBLITERATION

*DESIGN EXCEPTION REQUIRED FOR DESIGN SPEED (35 MPH),
MINIMUM HORIZONTAL CURVE RADIUS (300') AND HORIZONTAL
STOPPING SIGHT DISTANCE (165')

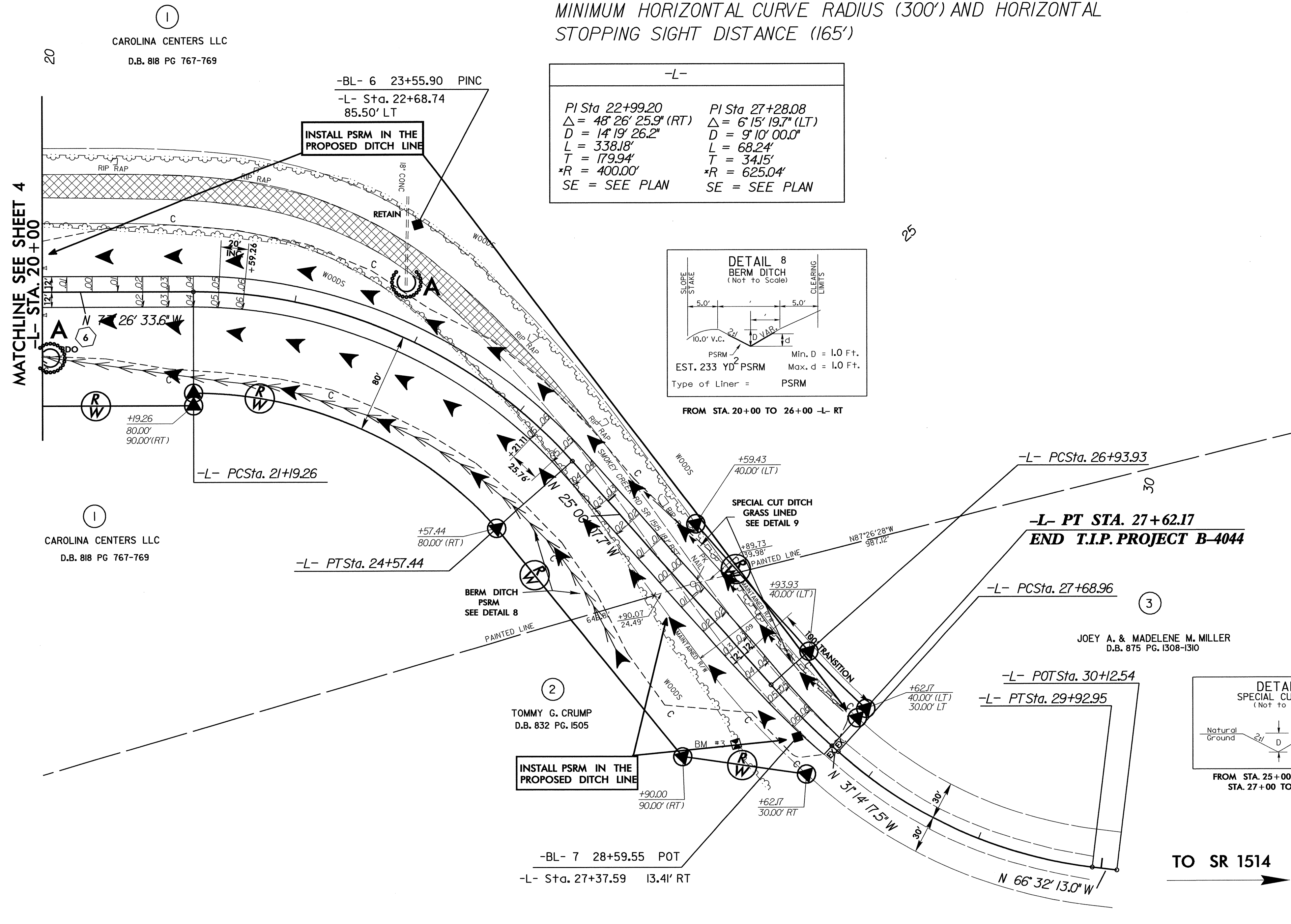
-L-	
PI Sta 22+99.20 $\Delta = 48^{\circ} 26' 25.9" (RT)$ $D = 14^{\circ} 19' 26.2"$ $L = 338.18'$ $T = 179.94'$ $*R = 400.00'$ SE = SEE PLAN	PI Sta 27+28.08 $\Delta = 6^{\circ} 15' 19.7" (LT)$ $D = 9^{\circ} 10' 00.0"$ $L = 68.24'$ $T = 34.15'$ $*R = 625.04'$ SE = SEE PLAN



FROM STA. 20+00 TO 26+00 -L- RT



FROM STA. 25+00 TO 26+50 -L- LT
STA. 27+00 TO 27+50 -L- LT



TO SR 1514

REVISIONS

8/17/99

25-JUL-2005 10:07
c:\cum\11-est\settings\nehan\desktop\5-4044\roadway\pro\5-4044_rdy_psh05.dgn
c:\cum\11-est\settings\nehan\desktop\5-4044_rdy_psh05.dgn

MATCHLINE SEE SHEET 4
-L- STA. 20+00

1
CAROLINA CENTERS LLC
D.B. 818 PG 767-769

1
CAROLINA CENTERS LLC
D.B. 818 PG 767-769

2
TOMMY G. CRUMP
D.B. 832 PG. 1505

3
JOEY A. & MADELENE M. MILLER
D.B. 875 PG. 1308-1310