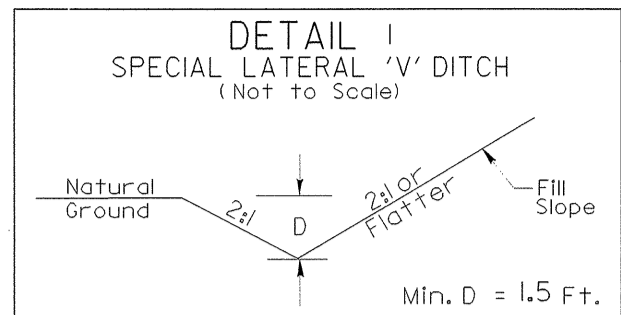
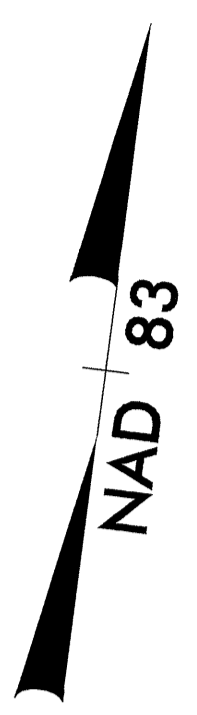


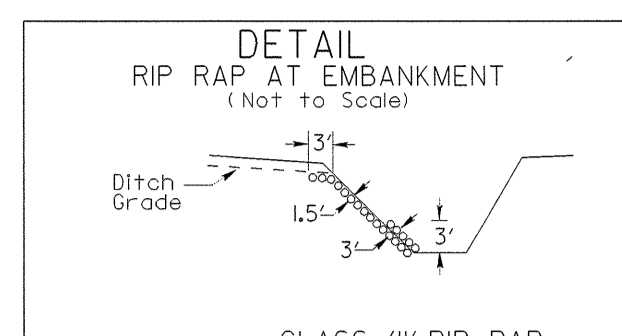
**UTILITIES BY OTHERS**

**NOTE:**  
ALL PROPOSED UTILITY WORK  
SHOWN ON THIS SHEET WILL  
BE DONE BY OTHERS

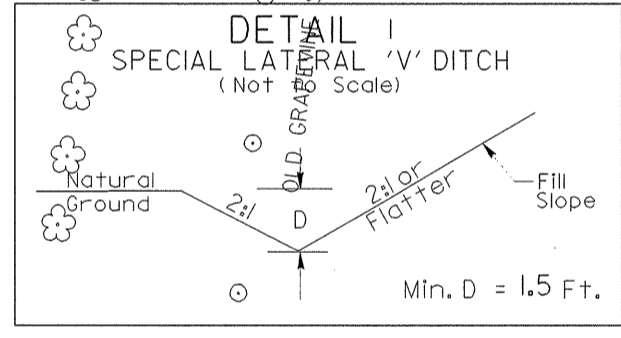
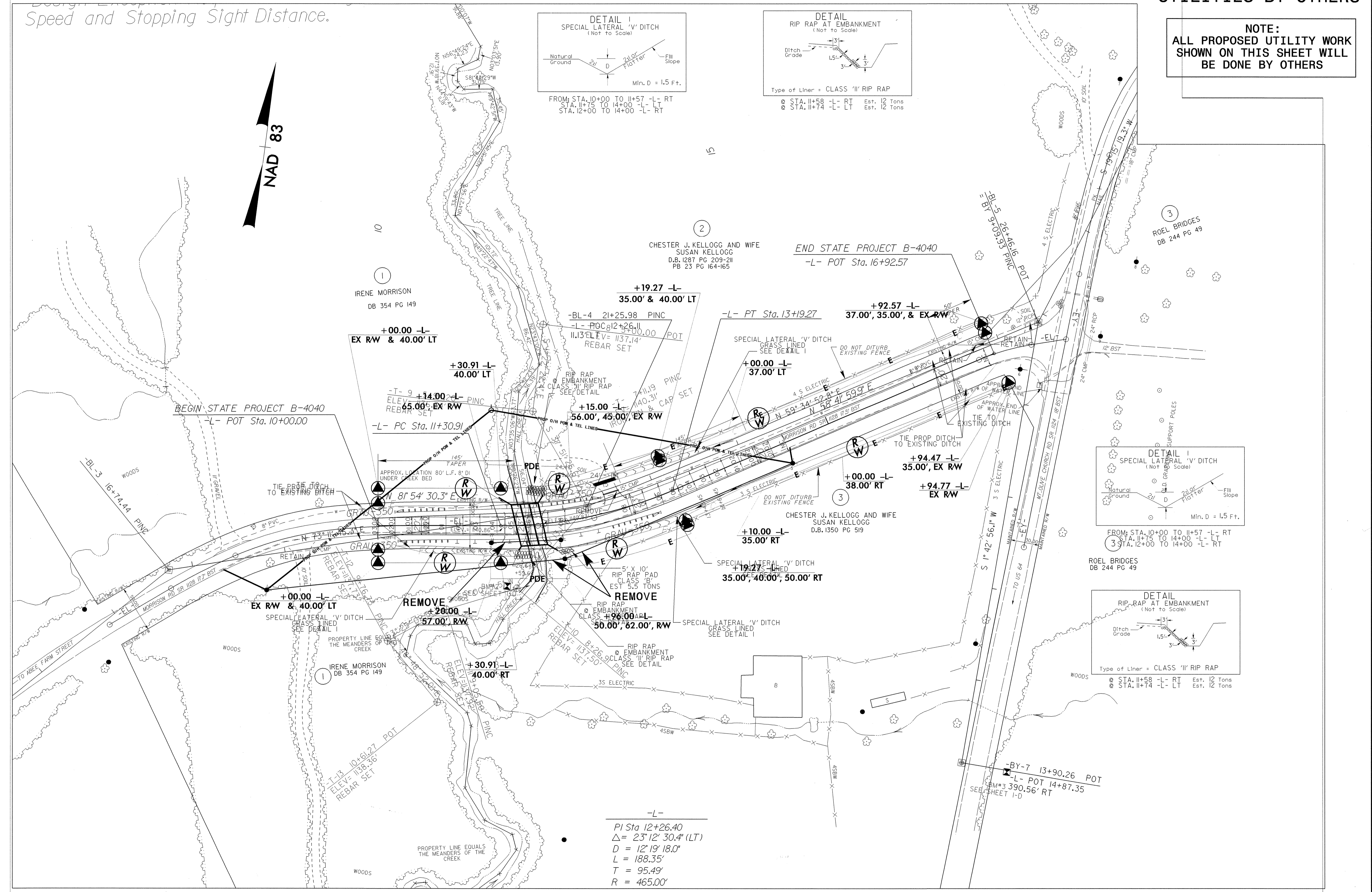
Speed and Stopping Sight Distance.



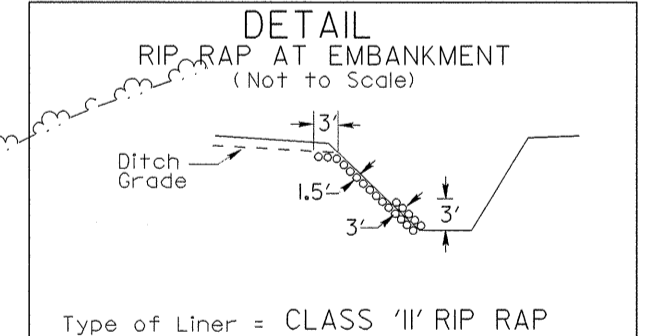
FROM: STA. 10+00 TO 11+57 -L- RT  
STA. 11+75 TO 14+00 -L- LT  
STA. 12+00 TO 14+00 -L- RT



Type of Liner = CLASS 'II' RIP RAP  
@ STA. 11+58 -L- RT Est. 12 Tons  
@ STA. 11+74 -L- LT Est. 12 Tons



FROM: STA. 10+00 TO 11+57 -L- RT  
STA. 11+75 TO 14+00 -L- LT  
STA. 12+00 TO 14+00 -L- RT



Type of Liner = CLASS 'II' RIP RAP  
@ STA. 11+58 -L- RT Est. 12 Tons  
@ STA. 11+74 -L- LT Est. 12 Tons

-L-  
PI Sta 12+26.40  
 $\Delta = 23' 12" 30.4" (LT)$   
 $D = 12' 19" 18.0"$   
 $L = 188.35'$   
 $T = 95.49'$   
 $R = 465.00'$

NOTE: SEE SHEET 5 FOR -L- PROFILE

8/17/99  
SYSTEMS  
DESIGN  
SOLUTIONS  
CORPORATION  
11111  
SHEET NO. U0-1