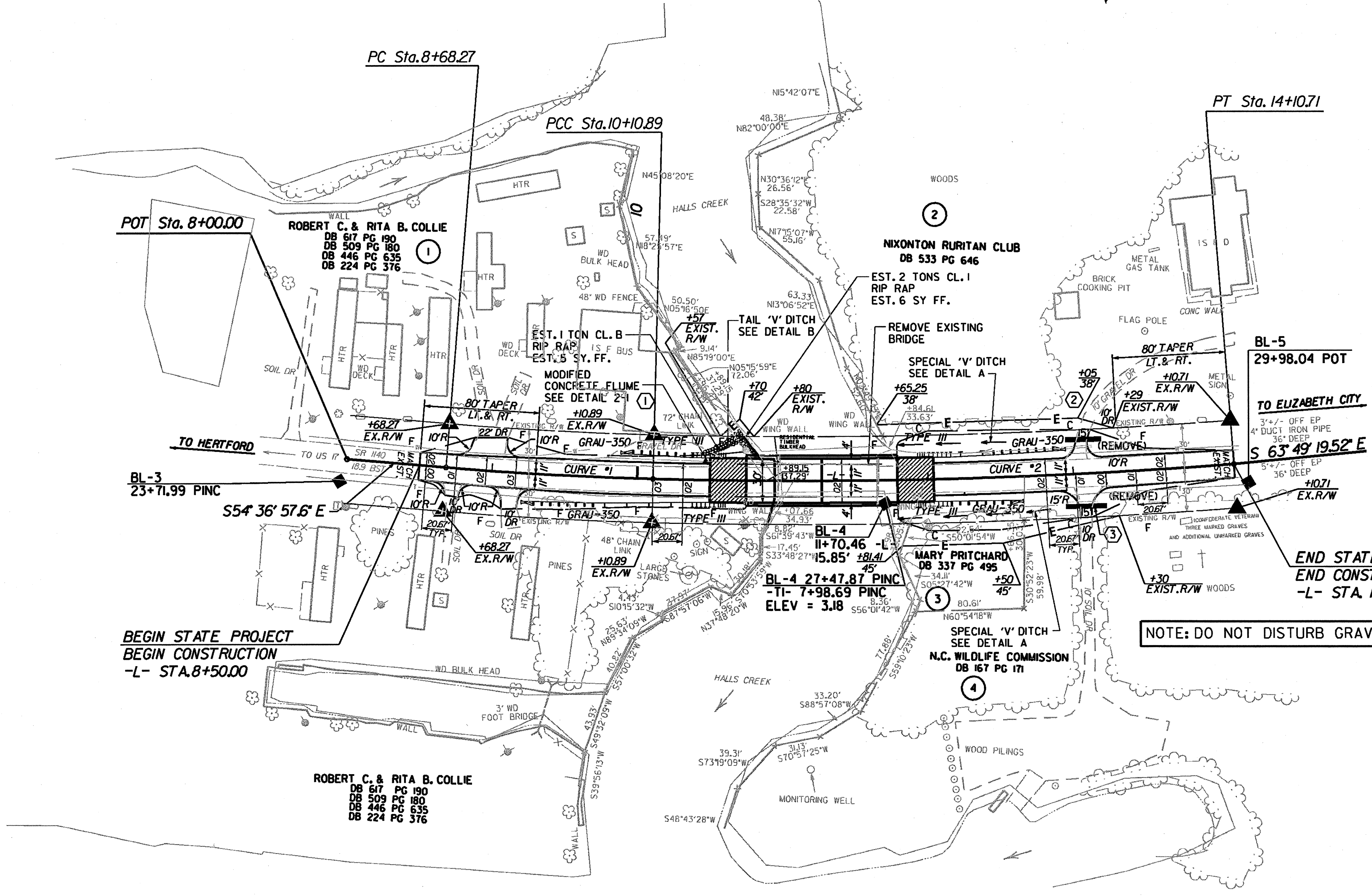


10/26/98

REVISIONS

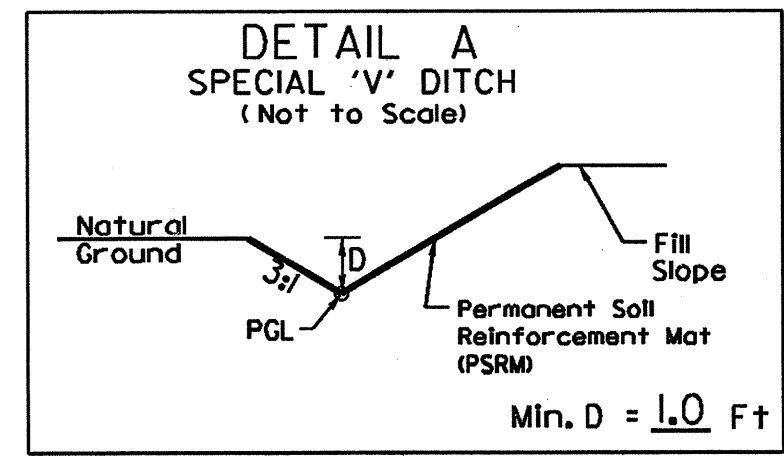
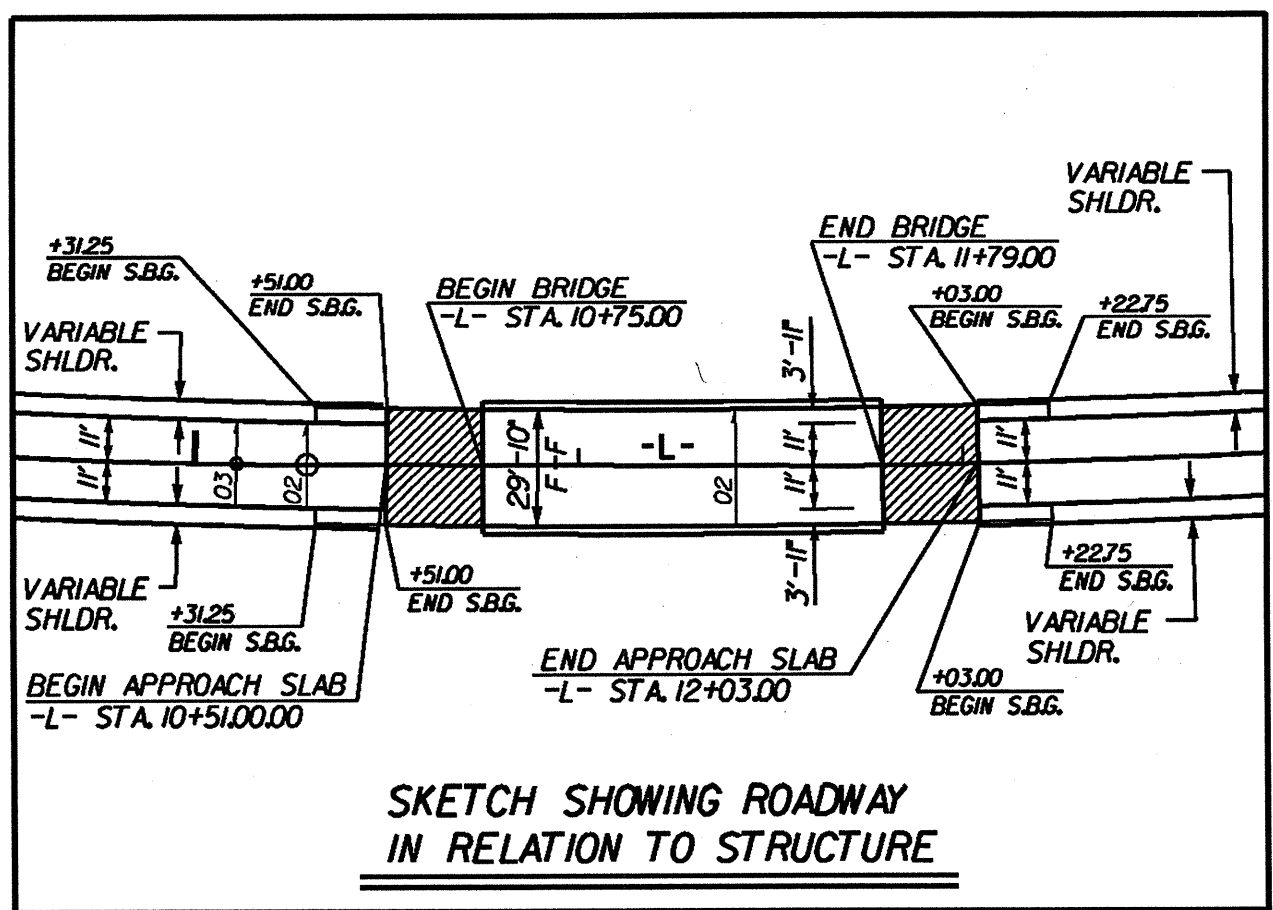
PROJECT REFERENCE NO. B-4222	SHEET NO. 4
RW SHEET NO.	
ROADWAY DESIGN ENGINEER NORTH CAROLINA PROFESSIONAL SEAL 27771 ANDREW B. COPPIN 1/31/05	HYDRAULICS ENGINEER NORTH CAROLINA PROFESSIONAL SEAL 18442 RICHARD W. BOLZ 1/31/05



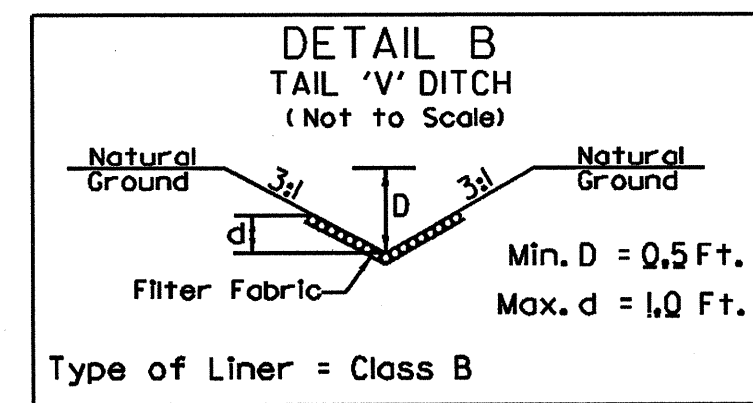
BEGIN STATE PROJECT
BEGIN CONSTRUCTION
-L- STA. 8+50.00

END STATE PROJECT
END CONSTRUCTION
-L- STA. 14+10.71

NOTE: DO NOT DISTURB GRAVE SITES.



-L- STA 11+75 TO STA 13+50 LT.
-L- STA 11+85 TO STA 13+50 RT.



-L- STA. 10+46 LT.
DDE = 3 CY.

-L- CURVE 1
PI Sta 9+39.60
 $\Delta = 3' 12' 32.0''$ (LT)
D = 2' 15' 00.0"
L = 142.62'
T = 71.33'
R = 2,546.48'
e = .03
RUNOFF = SEE PLANS

-L- CURVE 2
PI Sta 12+10.98
 $\Delta = 5' 59' 49.9''$ (LT)
D = 1' 30' 00.0"
L = 399.81'
T = 200.09'
R = 3,819.72'
e = .02
RUNOFF = SEE PLANS

FOR -L- PROFILE SEE SHEET NO. 5

SEE SHEETS S-1 THRU S-20
FOR STRUCTURE PLANS

SBG - SHOULDER BERM GUTTER
 DENOTES APPROACH SLAB

Ramey Kemp & Associates, Inc.
 Transportation Consulting Engineers
 4928-A Windy Hill Drive Raleigh, North Carolina 27609
 (919) 872-545 Fax (919) 878-5416