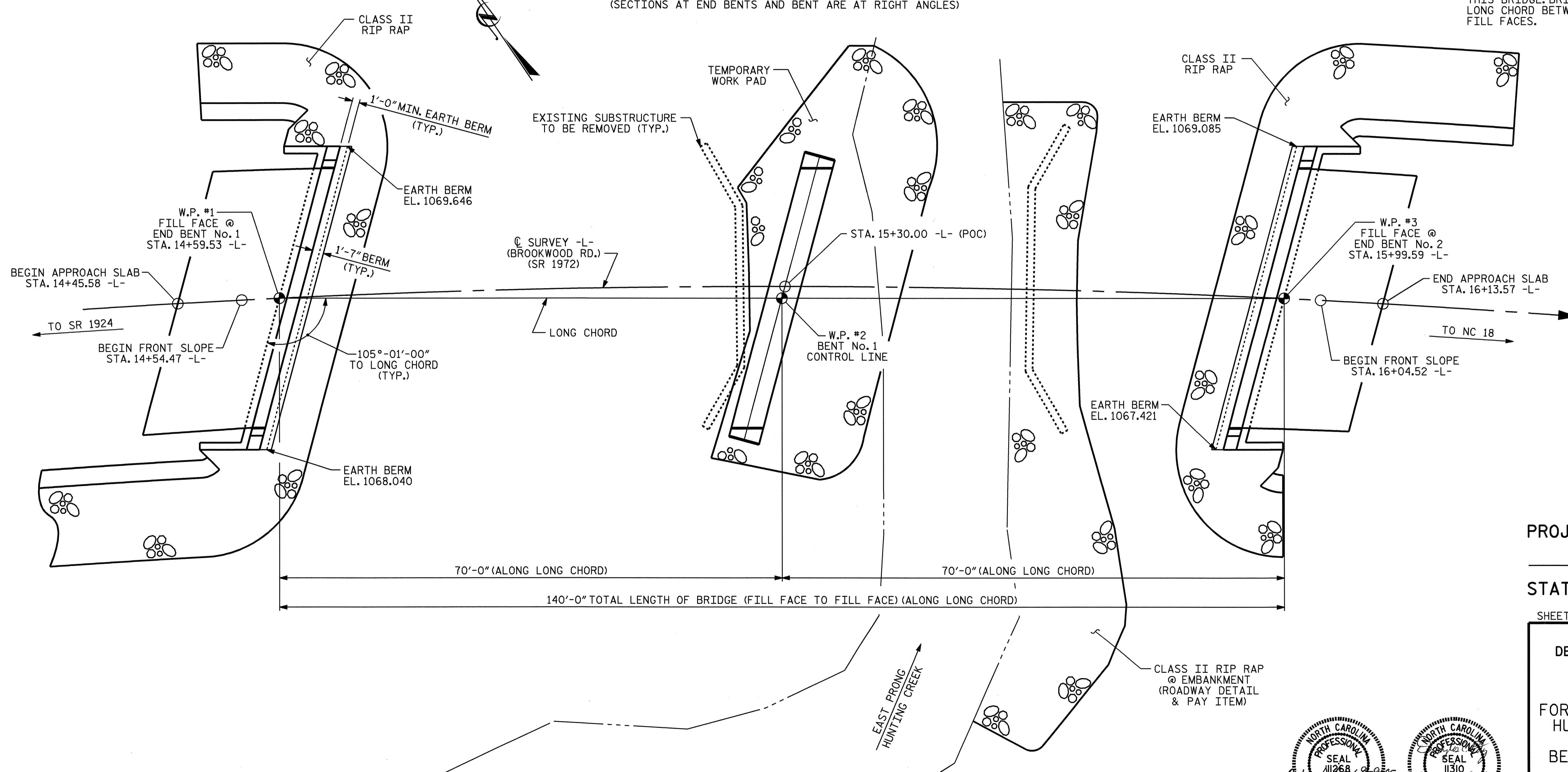


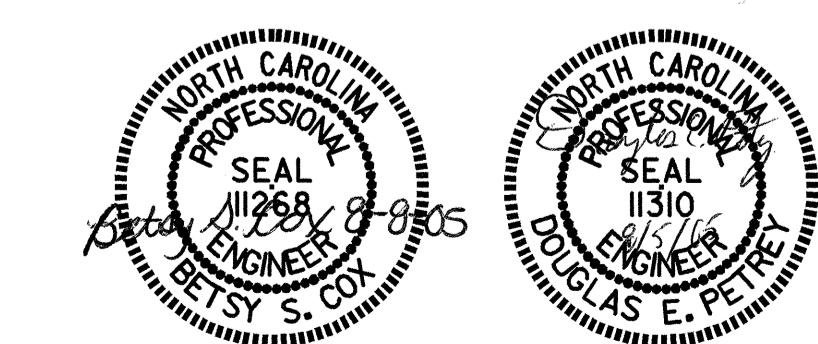
NOTE: THE EFFECTS OF THE HORIZONTAL CURVE SHALL BE NEGLECTED IN THE CONSTRUCTION OF THIS BRIDGE. BRIDGE TO BE BUILT ALONG THE LONG CHORD BETWEEN THE WORK POINTS AT THE FILL FACES.



PROJECT NO. B-4047  
BURKE COUNTY  
STATION: 15+30.00 -L-

SHEET 1 OF 3 REPLACES BRIDGE No. 94

STATE OF NORTH CAROLINA  
DEPARTMENT OF TRANSPORTATION  
RALEIGH  
**GENERAL DRAWING**  
FOR BRIDGE OVER EAST PRONG  
HUNTING CREEK ON SR 1972  
(BROOKWOOD RD.)  
BETWEEN SR 1924 AND NC 18



DRAWN BY: B.N. GRADY DATE: 6/05  
CHECKED BY: A.R. CHESSON DATE: 6/05

REVISIONS						SHEET NO.
NO.	BY:	DATE:	NO.	BY:	DATE:	S-1
1			3			TOTAL SHEETS
2			4			24