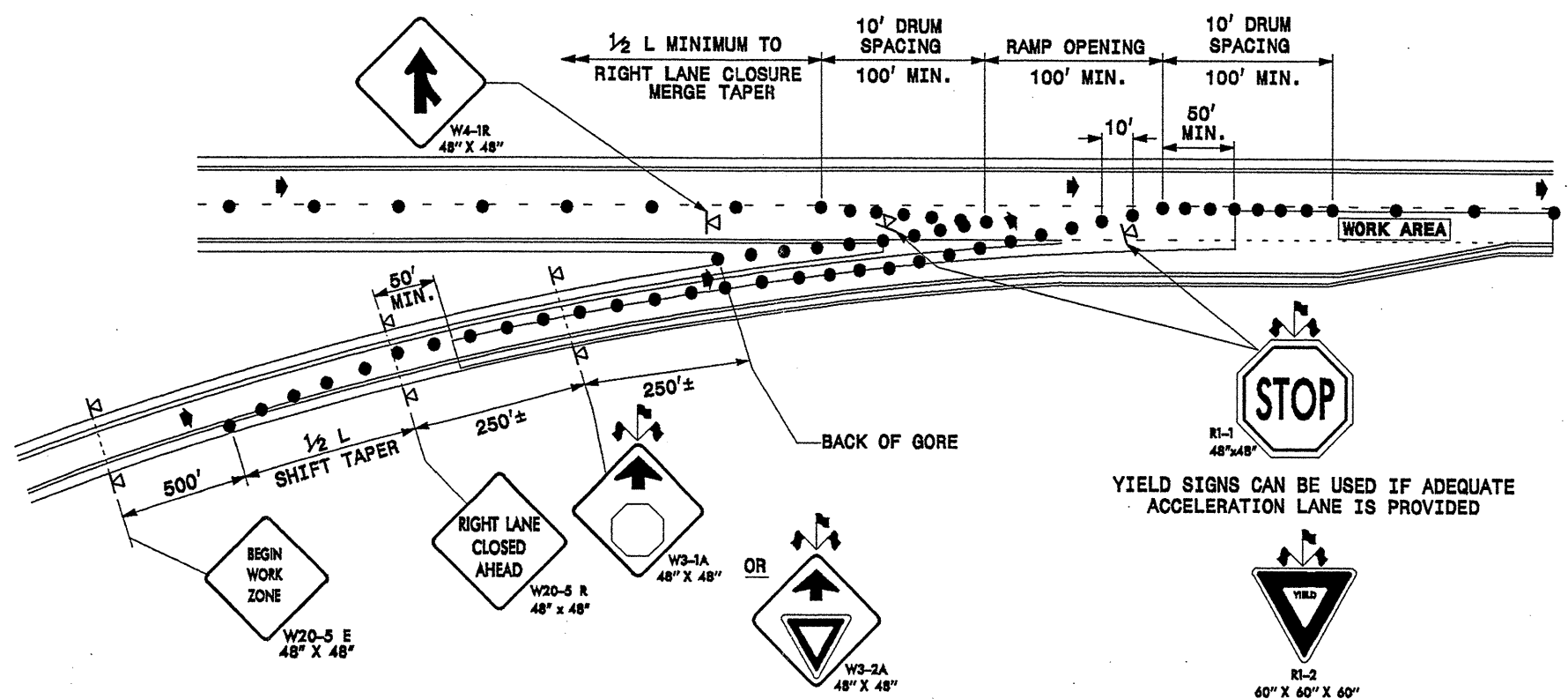


STATE OF
NORTH CAROLINA
DEPT. OF TRANSPORTATION
DIVISION OF HIGHWAYS
RALEIGH, N.C.

ENGLISH STANDARD DRAWING FOR
TEMPORARY LANE CLOSURES
RIGHT LANE CLOSURES THRU ENTRANCE RAMP

STATE OF
NORTH CAROLINA
DEPT. OF TRANSPORTATION
DIVISION OF HIGHWAYS
RALEIGH, N.C.

ENGLISH STANDARD DRAWING FOR
TEMPORARY LANE CLOSURES
RIGHT LANE CLOSURES THRU ENTRANCE RAMP



LEGEND

	WARNING FLAGS
	DRUM
	PORTABLE SIGN
	DIRECTION OF TRAFFIC FLOW

GENERAL NOTES

- USE THE ABOVE DETAILS IN CONJUNCTION WITH A RIGHT LANE CLOSURE AS SHOWN ON SHEET NUMBER TCP 3 & 4.
- MOUNT SIGNS SHOWN A MINIMUM OF 5 FEET ABOVE THE PAVEMENT ELEVATION.

SHEET 6 OF 7
1101.02

SHEET 6 OF 7
1101.02

*****SYSTEMS*****
*****DGN*****
*****SERV*****

APPROVED:	DATE: 5/18/04	TEMPORARY LANE CLOSURES	
	SCALE: NONE		
	DATE: 04/04		
	DWG. BY: SJP		
DESIGN BY: KAK			
REVIEWED BY: REG			