

NOTES

THE COST OF THE BARRIER RAIL ON THE APPROACH SLAB SHALL BE INCLUDED IN THE LUMP SUM CONTRACT PRICE BID FOR BRIDGE APPROACH SLABS.

FOR REINFORCED BRIDGE APPROACH FILL INCLUDING FABRIC, IMPERMEABLE GEOMEMBRANE, 4" Ø DRAINAGE PIPE, #78M STONE, AND SELECT MATERIAL, SEE STD. DWG. 422.10.

AREA BETWEEN THE WINGWALL AND APPROACH SLAB SHALL BE GRADED TO DRAIN THE WATER AWAY FROM THE FILL FACE OF THE BRIDGE AND SHALL BE PAVED.

THE 6" COMP. A.B.C. SHALL EXTEND 1'-0" BEYOND THE SLAB AS SHOWN AND 1'-0" OUTSIDE OF EACH EDGE OF SLAB.

THE CONTRACTOR MAY USE 4" TYPE B-25.0B ASPHALT CONCRETE BASE COURSE IN LIEU OF 6" COMP. A.B.C. IF THIS OPTION IS USED, THE BASE COURSE SHALL EXTEND 1'-0" BEYOND THE END OF THE APPROACH SLAB AND THE WIDTH SHALL BE THE SAME AS THAT OF THE APPROACH SLAB.

THE CONTRACTOR MAY USE 5" CLASS "A" CONCRETE BASE IN LIEU OF 6" COMP. A.B.C. IF THIS OPTION IS USED, THE CONCRETE BASE SHALL EXTEND 1'-0" BEYOND THE END OF THE APPROACH SLAB AND THE WIDTH SHALL BE THE SAME AS THAT OF THE APPROACH SLAB. THE CONCRETE SHALL BE FINISHED TO A SMOOTH SURFACE AND A LAYER OF 30 LB ROOFING FELT SHALL BE PLACED BETWEEN THE CONCRETE BASE AND THE APPROACH SLAB TO PREVENT BOND. THE APPROACH SLAB SHALL NOT BE CAST UNTIL THE CONCRETE BASE HAS REACHED AN AGE OF THREE CURING DAYS.

THE JOINT AT THE END BENT SHALL BE SEALED AS SOON AS PRACTICAL AFTER THE CONSTRUCTION OF THE APPROACH SLABS.

BILL OF MATERIAL

FOR ONE APPROACH SLAB (2 REQUIRED)

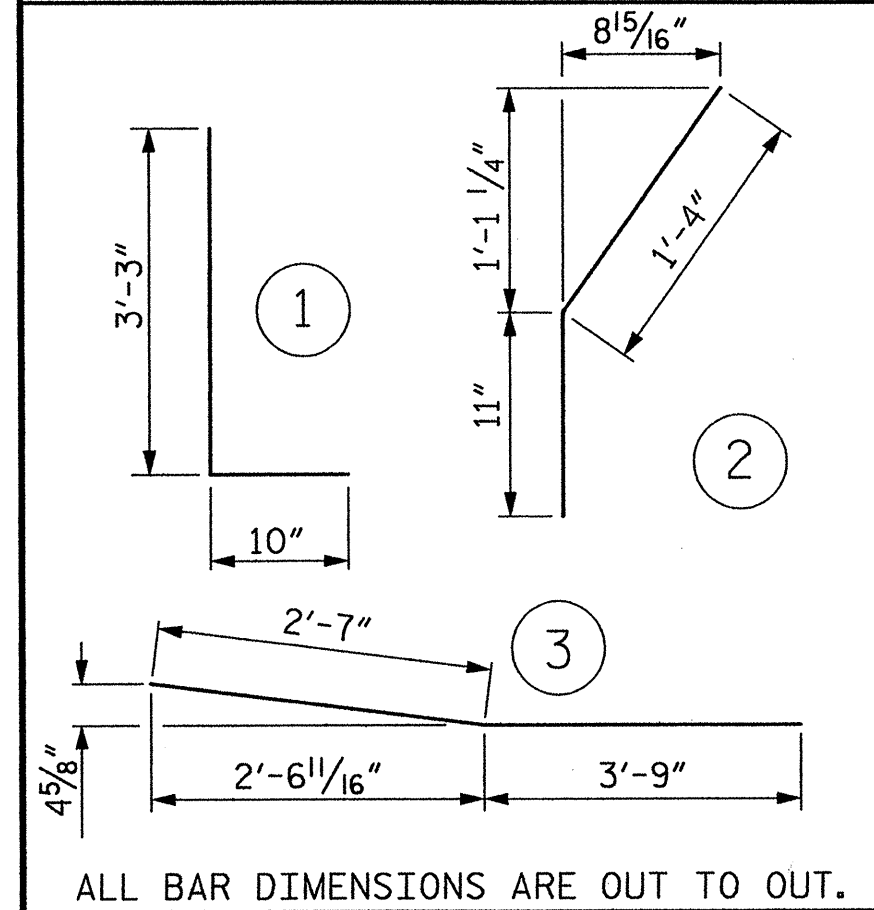
BAR	NO.	SIZE	TYPE	LENGTH	WEIGHT
*A1	23	#5	STR	38'-8"	928
A2	18	#4	STR	20'-3"	243
*B1	78	#6	STR	11'-3"	1,318
B2	78	#6	STR	11'-8"	1,367
*B3	14	#5	STR	11'-8"	170
*B4	2	#5	3	6'-4"	13
*S1	48	#5	STR	3'-3"	163
*S2	48	#5	1	4'-1"	204
*S3	20	#5	2	2'-3"	47

REINFORCING STEEL	LBS.	1,610
*EPOXY COATED REINFORCING STEEL	LBS.	2,843

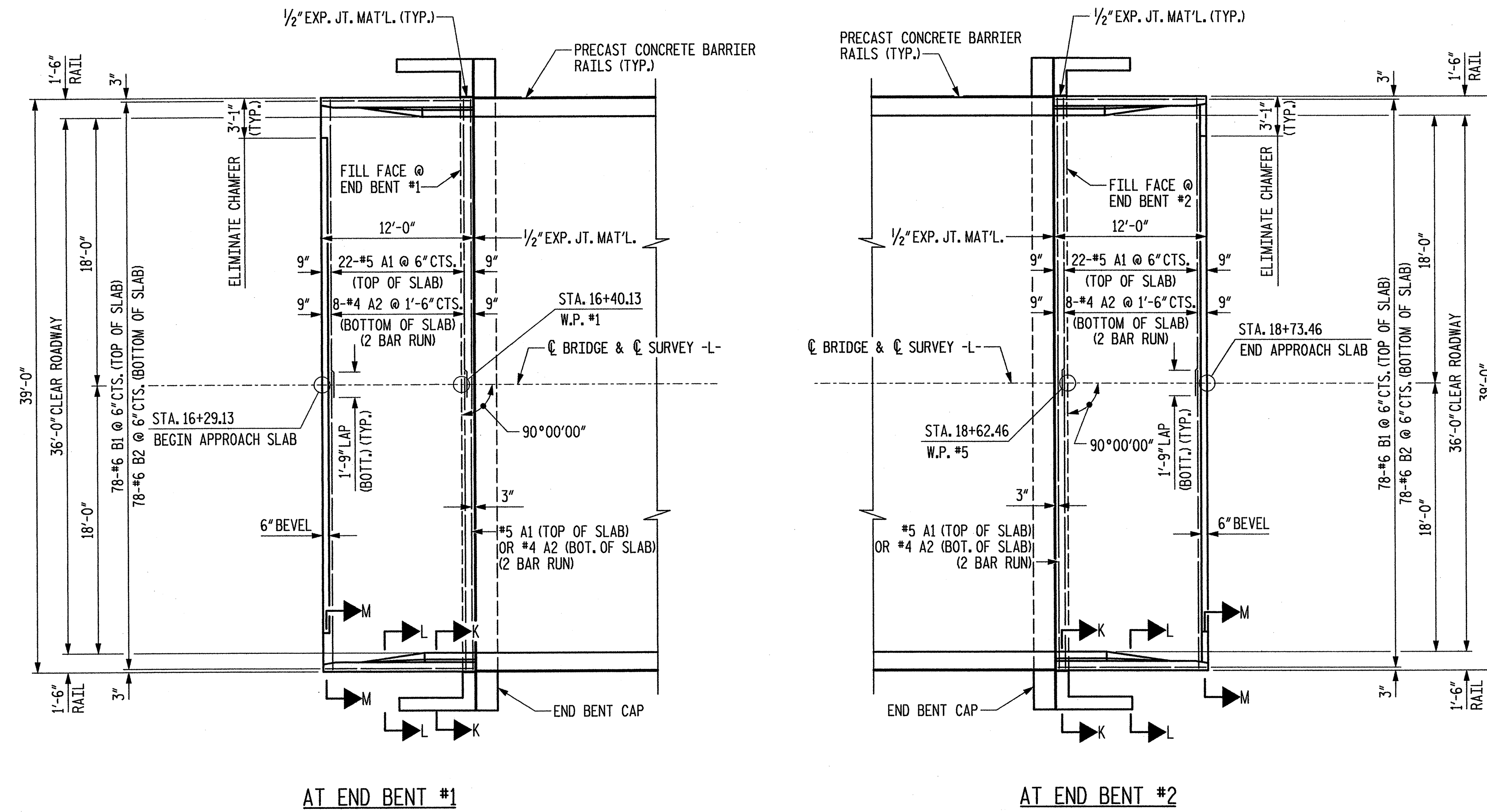
CLASS AA CONCRETE BREAKDOWN		
END BENT #1		
POUR 1 SLAB	C. Y.	16.9
POUR 2 RAIL	C. Y.	2.2
CLASS AA CONCRETE	C. Y.	19.1

END BENT #2		
POUR 1 SLAB	C. Y.	16.9
POUR 2 RAIL	C. Y.	2.2
CLASS AA CONCRETE	C. Y.	19.1

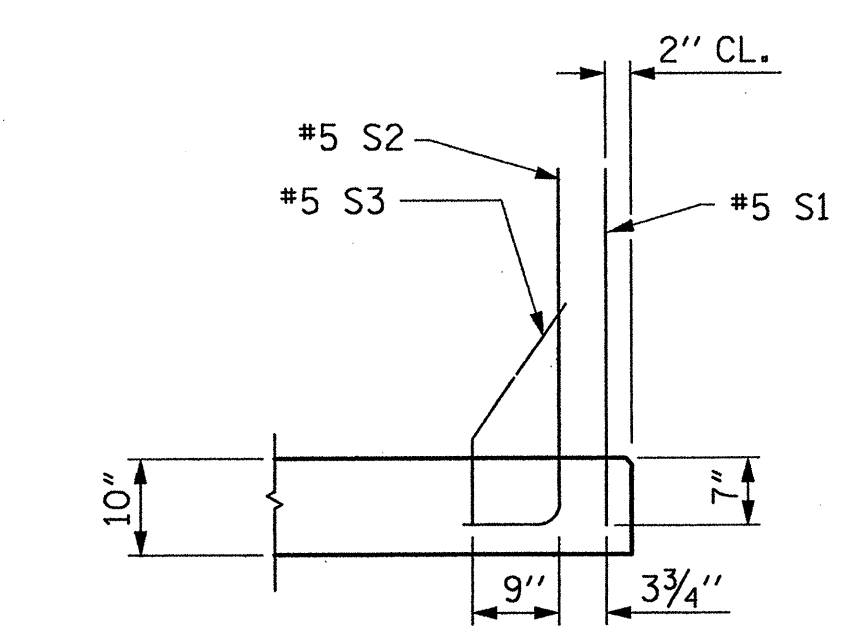
BAR TYPES



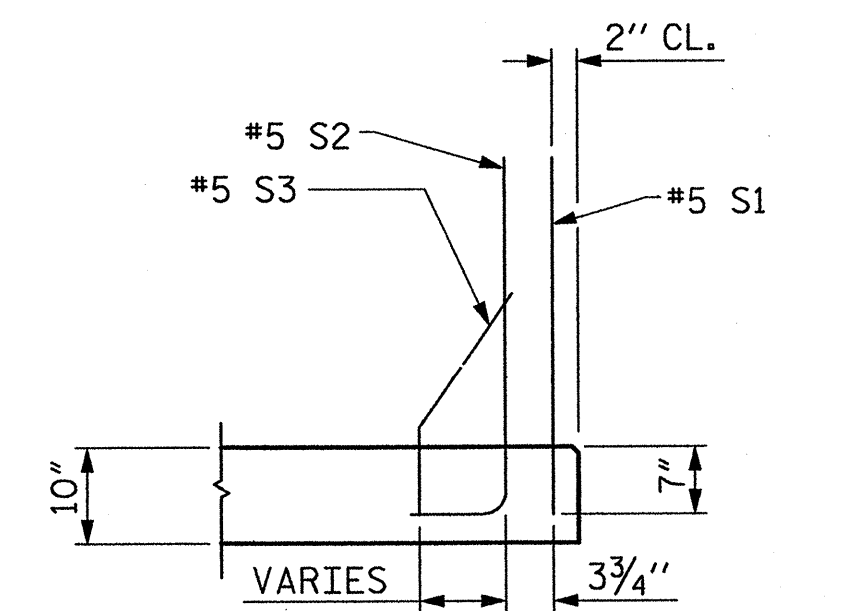
ALL BAR DIMENSIONS ARE OUT TO OUT.



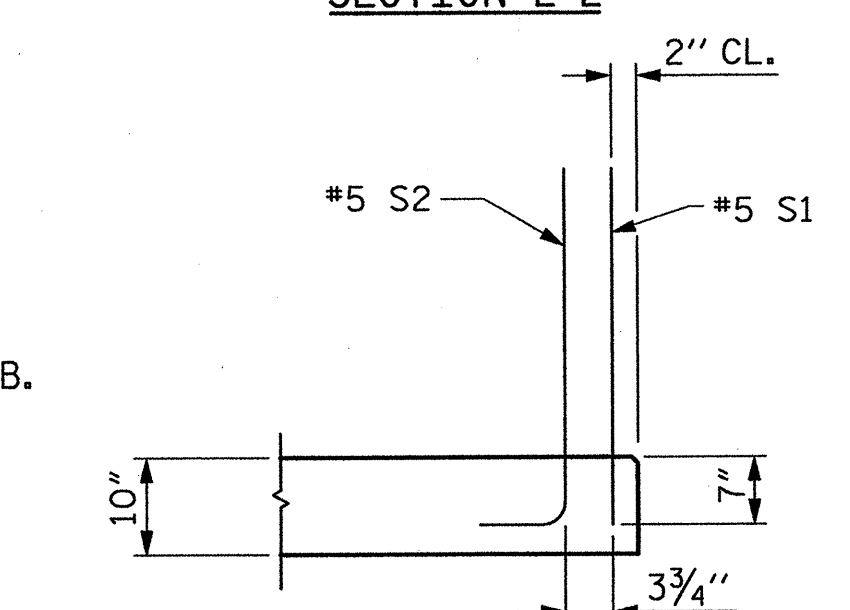
PLAN OF APPROACH SLABS



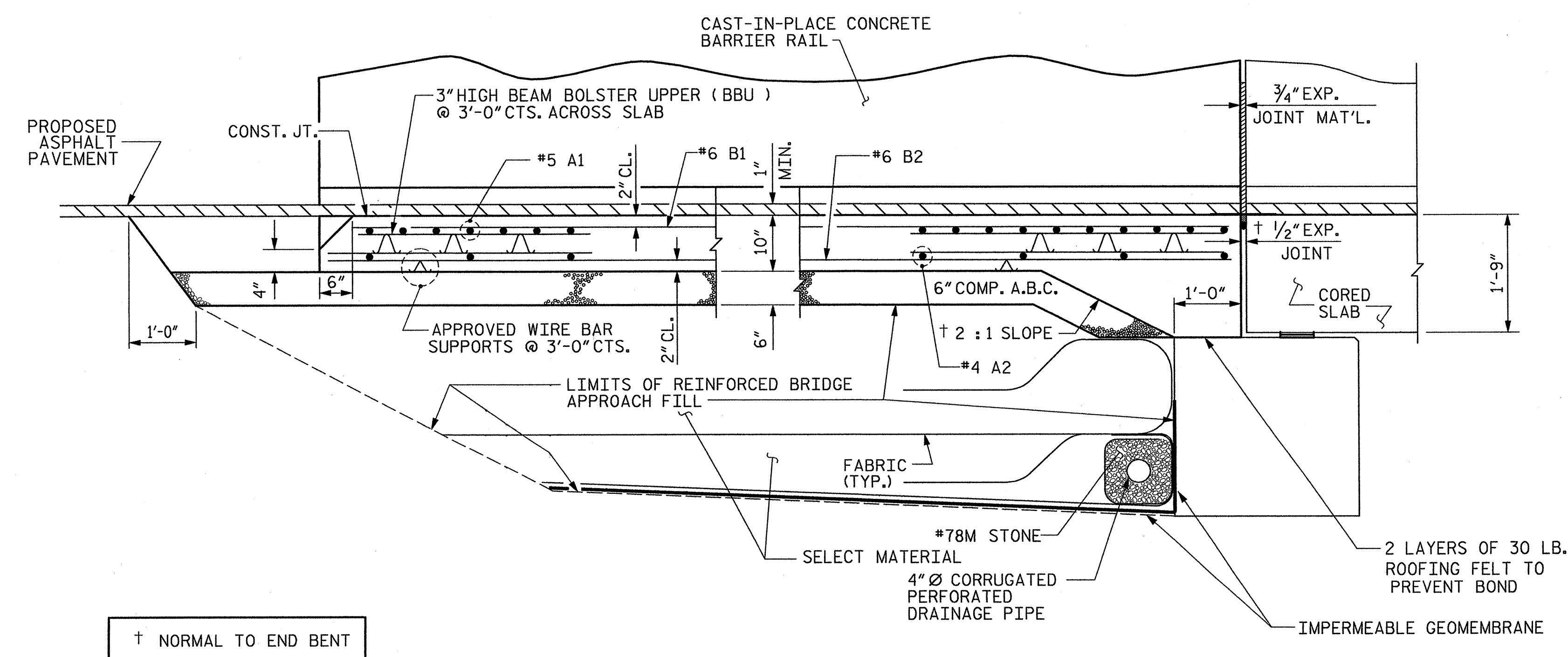
SECTION K-K



SECTION L-L



SECTION M-M



SECTION THRU SLAB

PROJECT NO. 36971
 COUNTY: UNION
 STATION: 17+51.30
 REPLACES BRIDGE NO. 33

STATE OF NORTH CAROLINA
 DEPARTMENT OF TRANSPORTATION
 RALEIGH

APPROACH SLAB
 36'-0" CLEAR ROADWAY
 90° SKEW

REVISIONS				SHEET NO.	
NO.	BY	DATE	NO.	BY	DATE
1			3		
2			4		

TOTAL SHEETS: 24

Plans prepared by:
KO & ASSOCIATES, P.C.
 Consulting Engineers
 101 SCHAUB DR. SUITE #202
 RALEIGH, N.C. 27606
 For Division of Highways

NOT TO SCALE