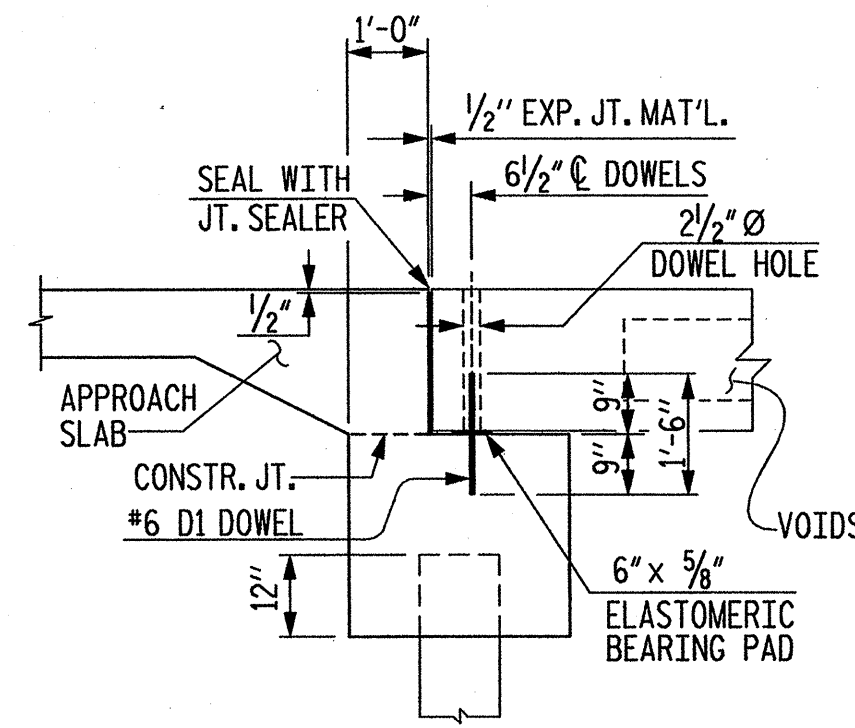
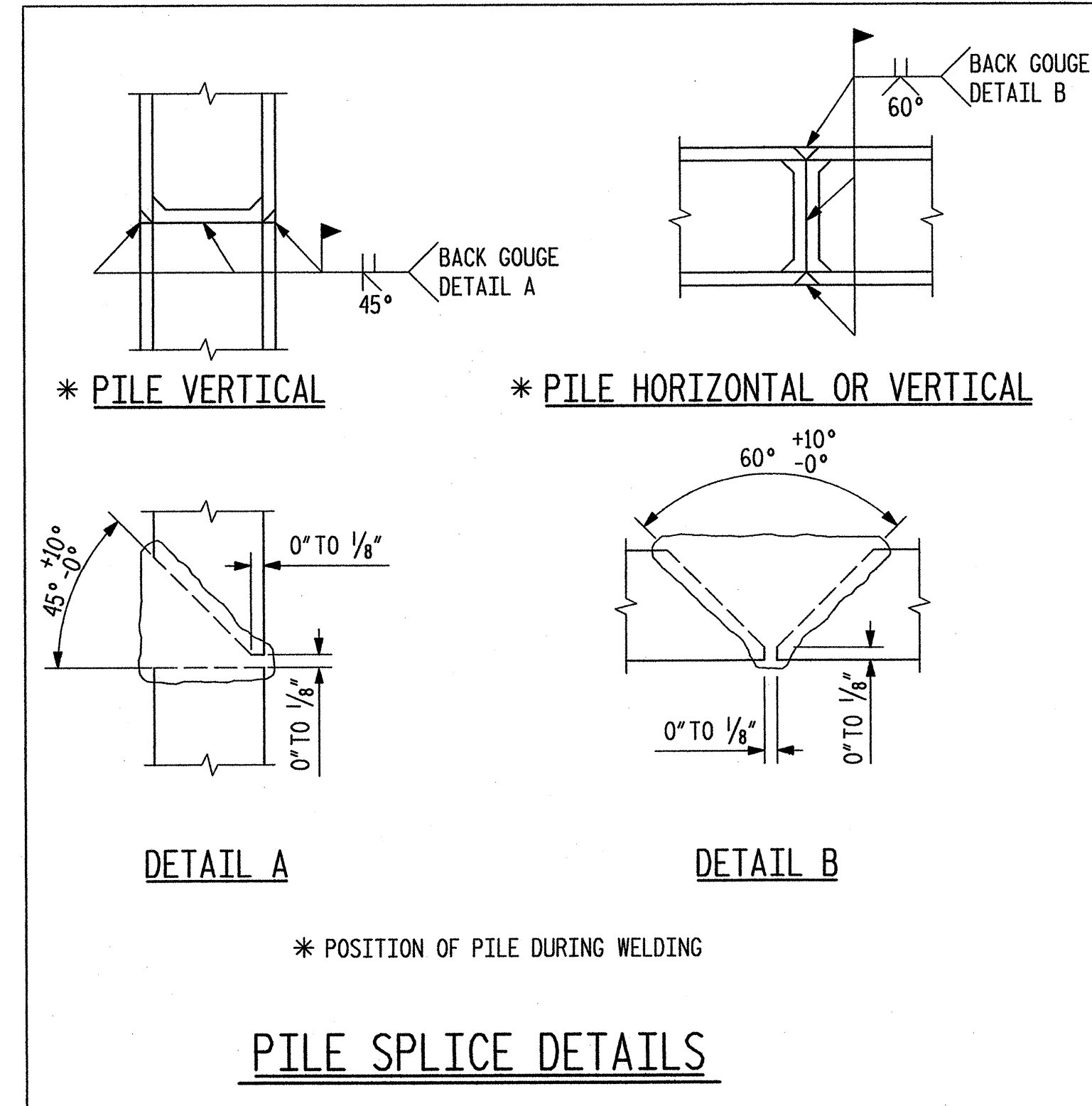


PLAN OF WING

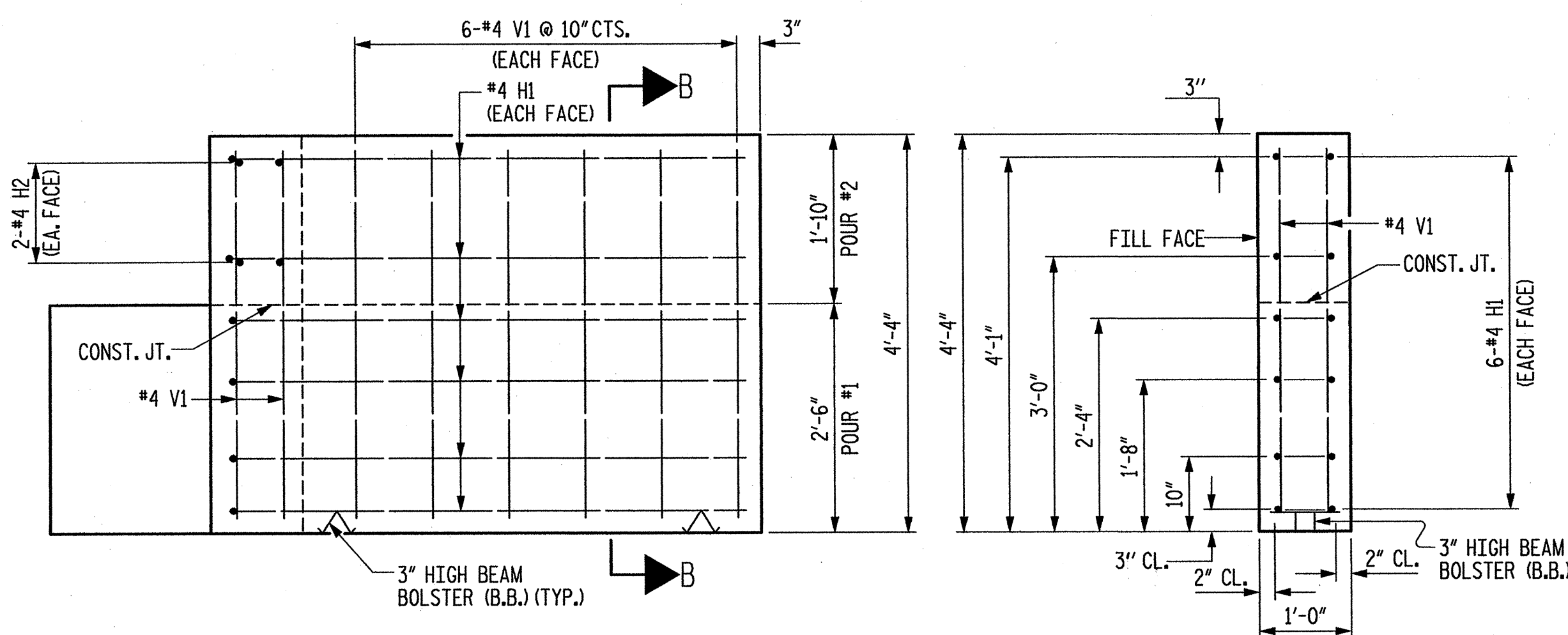


DOWEL LOCATION DETAIL

NOTE: C OF DOWELS SHALL MATCH C OF DOWEL HOLES IN CORED SLAB UNITS.

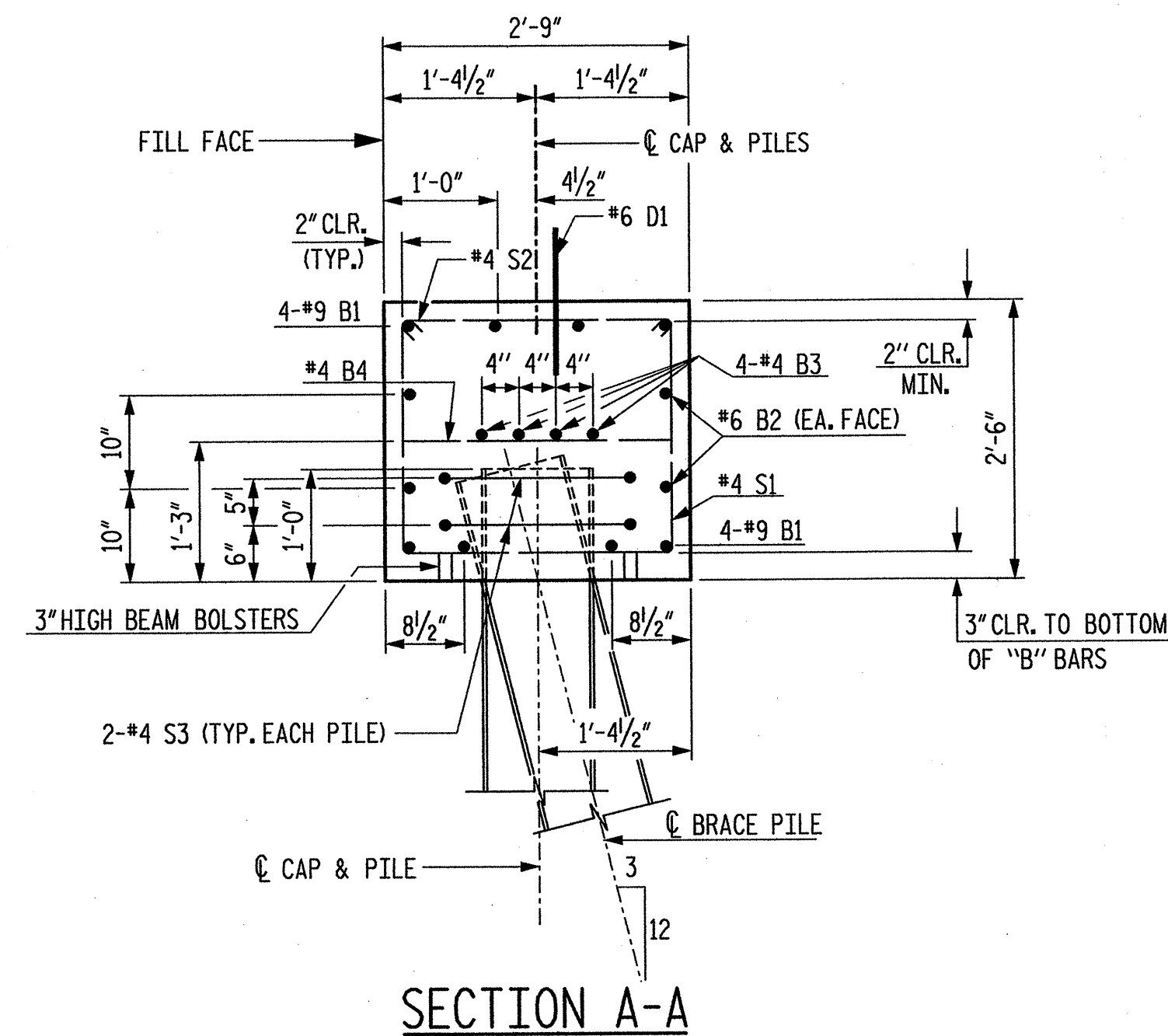


PILE SPLICE DETAILS



ELEVATION OF WING

SECTION B-B



SECTION A-A

BILL OF MATERIAL
ONE END BENT (2 REQUIRED)

BAR NO.	NO.	SIZE	TYPE	LENGTH	WEIGHT
B1	8	9	1	47'-2"	1283
B2	4	6	STR	44'-8"	268
B3	8	4	STR	23'-7"	126
B4	11	4	STR	2'-5"	18
D1	26	6	STR	1'-6"	59
H1	24	4	4	6'-4"	102
H2	8	4	STR	2'-7"	14
S1	38	4	3	7'-5"	188
S2	38	4	2	3'-2"	80
S3	14	4	5	6'-6"	61
V1	40	4	STR	4'-0"	107

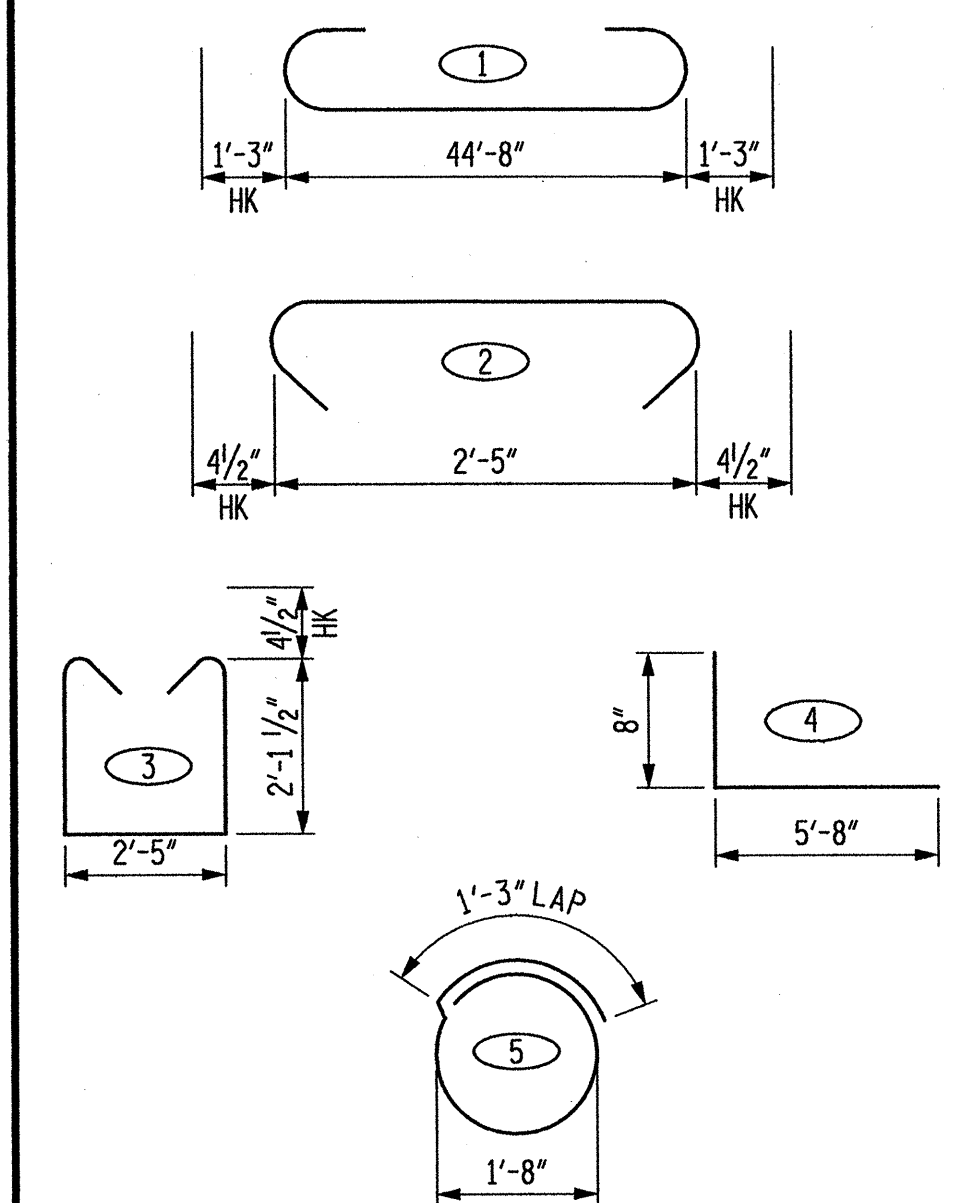
REINFORCING STEEL TOTAL 2,306 LBS.

CLASS "A" CONCRETE

POUR 1	12.4 CYS.
POUR 2	1.1 CYS.
TOTAL	13.5 CYS.

BAR TYPES

ALL BAR DIMENSIONS ARE OUT TO OUT



PROJECT NO. 36971
COUNTY: UNION
STATION: 17+51.30
REPLACES BRIDGE NO. 33

STATE OF NORTH CAROLINA
DEPARTMENT OF TRANSPORTATION
RALEIGH
CAST - IN - PLACE
END BENT DETAILS
50' AND 55' SPANS
WITH APPROACH SLABS
36' CLEAR ROADWAY - 90° SKEW

REVISIONS						SHEET NO.
NO.	BY	DATE	NO.	BY	DATE	9
1			3			TOTAL SHEETS
2			4			24

Plans prepared by:
KO & ASSOCIATES, P.C.
Consulting Engineers
1011 SCHUB DR. SUITE #202
RALEIGH, N.C. 27606
For Division of Highways

NOT TO SCALE

DRAWN BY: B.E. LANNING DATE: JULY 2004
CHECKED BY: J.E. MONDOLFI DATE: JULY 2004