

30-JUN-2003 10:31
 P:\Special Details\english\86202\86202.dgn
 AT 0522250

5/14/03

STATE OF
 NORTH CAROLINA
 DEPT. OF TRANSPORTATION
 DIVISION OF HIGHWAYS
 RALEIGH, N.C.

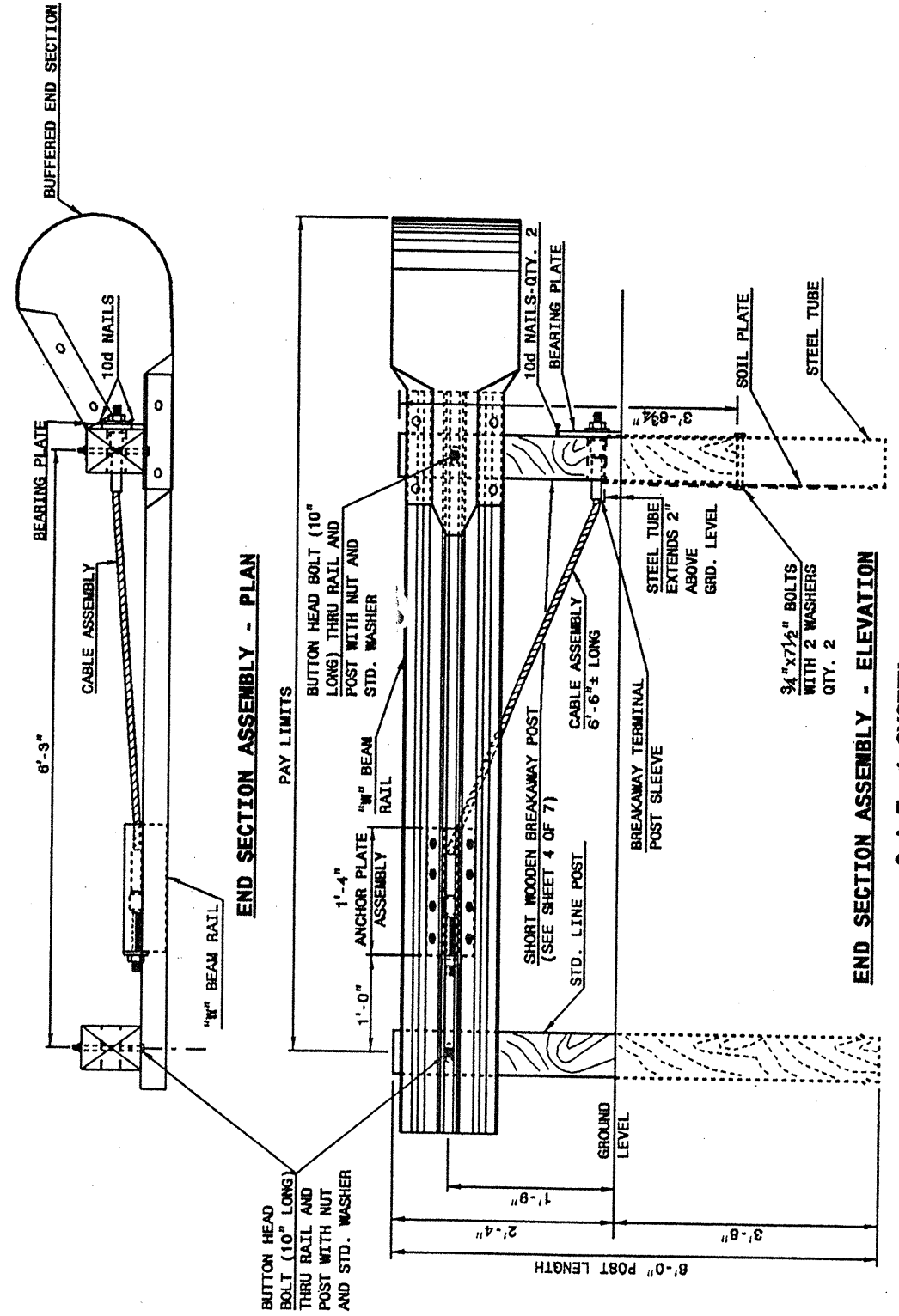
ENGLISH DETAIL DRAWING FOR
 GUARDRAIL INSTALLATION

SHEET 1 OF 7
 862D02

STATE OF
 NORTH CAROLINA
 DEPT. OF TRANSPORTATION
 DIVISION OF HIGHWAYS
 RALEIGH, N.C.

ENGLISH DETAIL DRAWING FOR
 GUARDRAIL INSTALLATION

SHEET 1 OF 7
 862D02



END SECTION ASSEMBLY - PLAN
 END SECTION ASSEMBLY - ELEVATION
 C.A.T.-1 SYSTEM

STATE OF
 NORTH CAROLINA
 DEPT. OF TRANSPORTATION
 DIVISION OF HIGHWAYS
 RALEIGH, N.C.

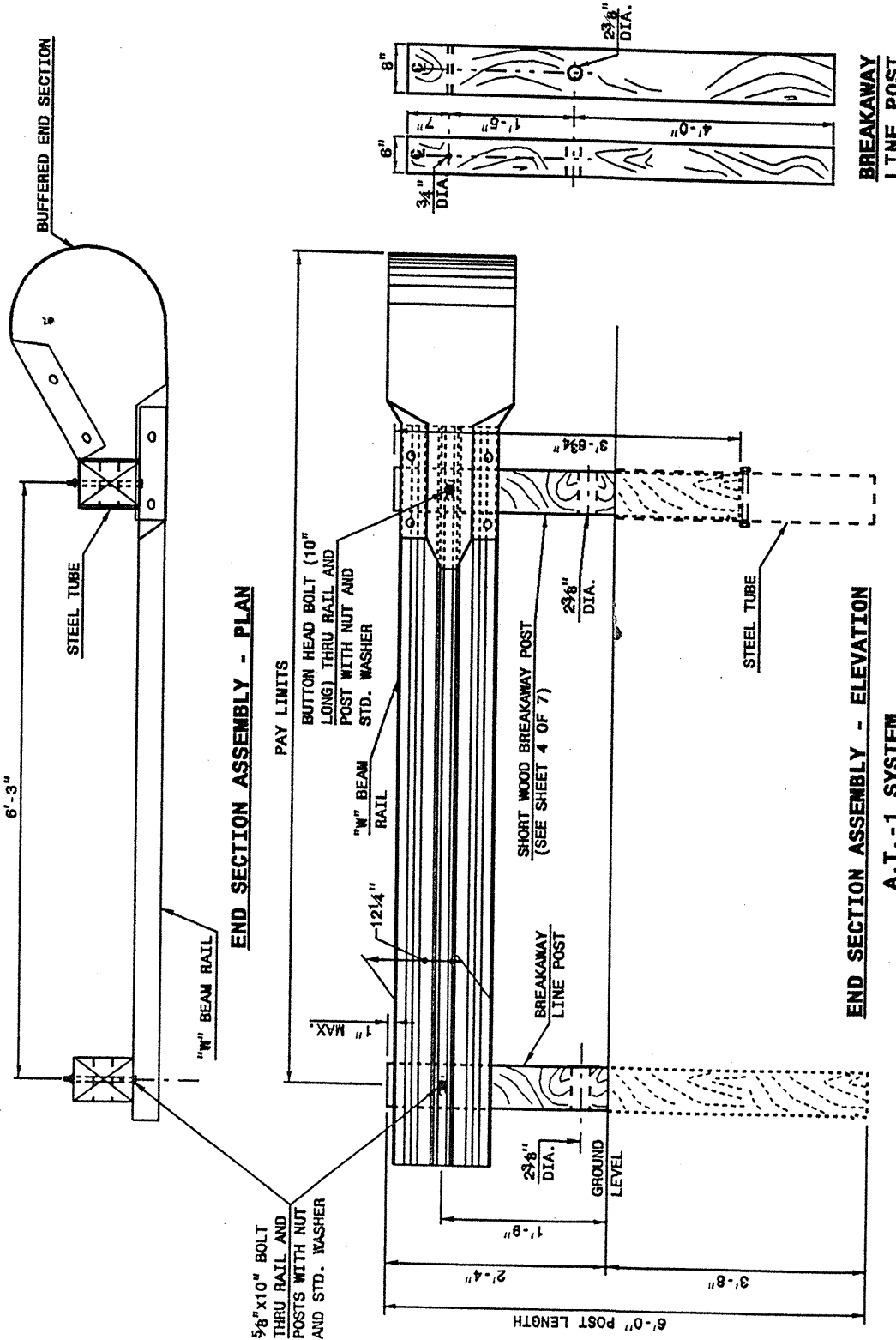
ENGLISH DETAIL DRAWING FOR
 GUARDRAIL INSTALLATION

SHEET 2 OF 7
 862D02

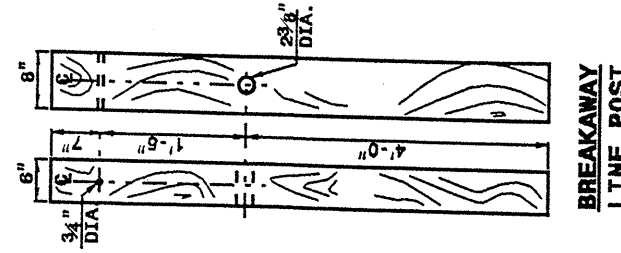
STATE OF
 NORTH CAROLINA
 DEPT. OF TRANSPORTATION
 DIVISION OF HIGHWAYS
 RALEIGH, N.C.

ENGLISH DETAIL DRAWING FOR
 GUARDRAIL INSTALLATION

SHEET 2 OF 7
 862D02



END SECTION ASSEMBLY - PLAN
 END SECTION ASSEMBLY - ELEVATION
 A.T.-1 SYSTEM



BREAKAWAY
 LINE POST

DESIGN SERVICES UNIT
 STANDARDS AND SPECIAL DESIGN
 Office 919-250-4128 FAX 919-250-4119
 SEE PLATE FOR TITLE
 ORIGINAL BY: 2002 STD. 862.02 DATE:
 MODIFIED BY: E.E. WARD DATE: 02-09-03
 CHECKED BY: DATE: 7-03

PROJECT REFERENCE NO.
 37489 SHEET NO.
 5A