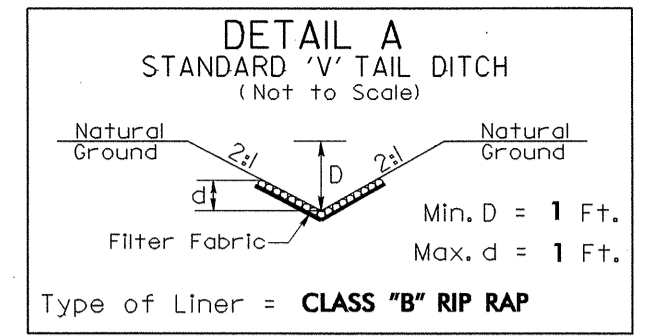


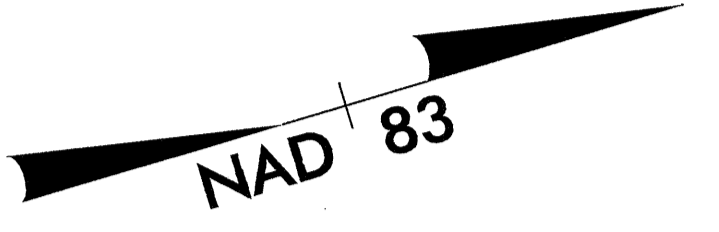
UTILITIES BY OTHERS

NOTE:  
ALL PROPOSED UTILITY WORK  
SHOWN ON THIS SHEET WILL  
BE DONE BY OTHERS

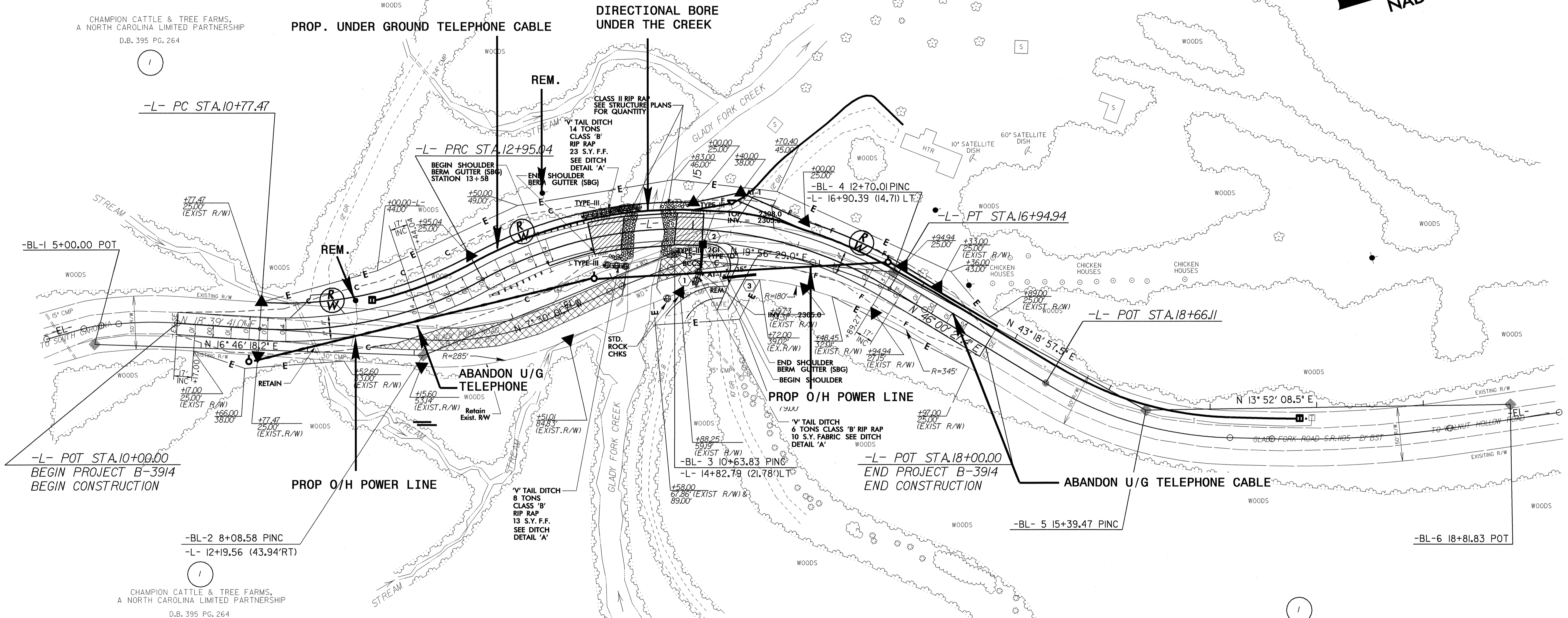


-L- STA. 14+25 LT & RT.  
-L- STA. 15+05 RT.  
DDE = 8 CY

CHAMPION CATTLE & TREE FARMS,  
A NORTH CAROLINA LIMITED PARTNERSHIP  
D.B. 395 PG. 264



CHAMPION CATTLE & TREE FARMS,  
A NORTH CAROLINA LIMITED PARTNERSHIP  
D.B. 395 PG. 264

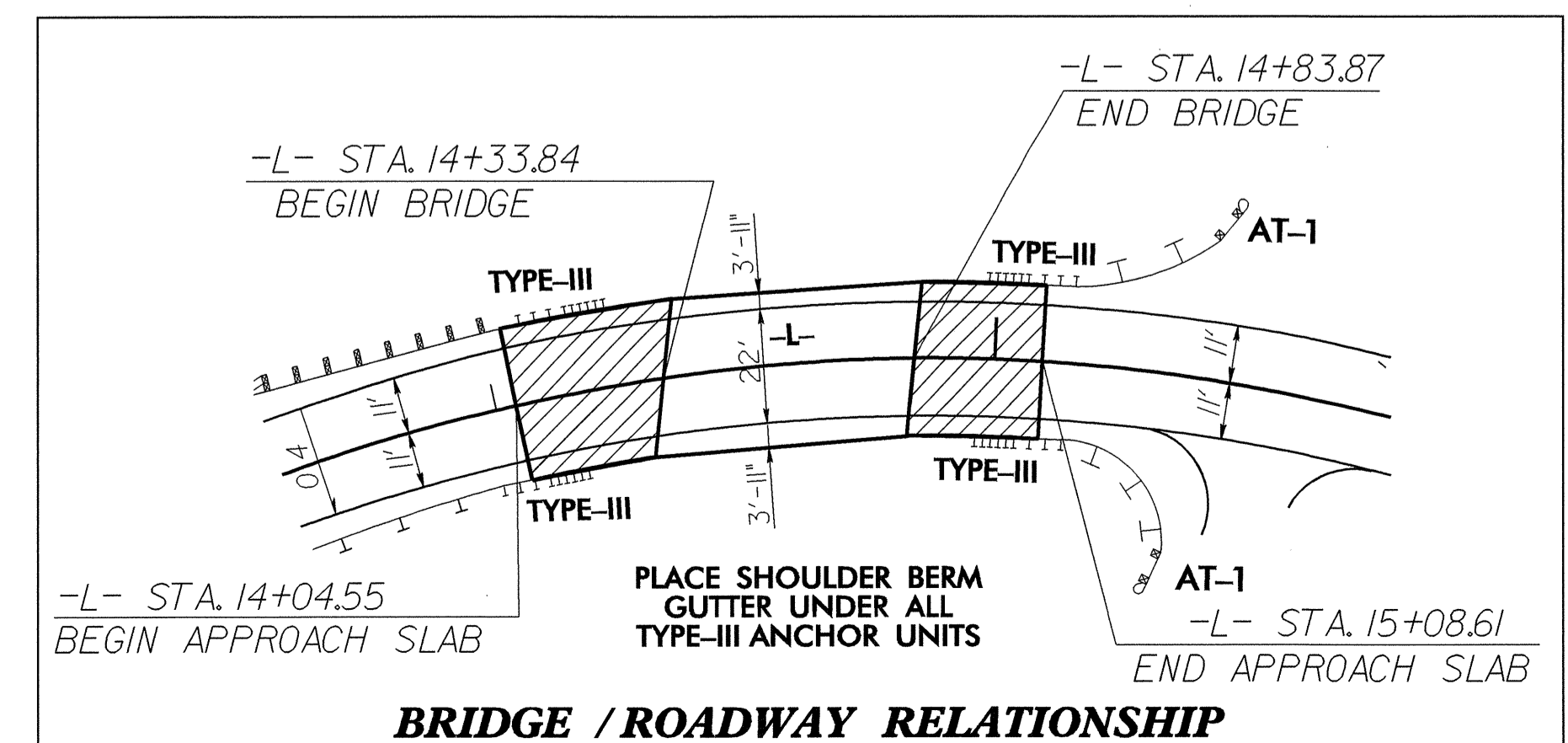


-L- POT STA. 10+09.00  
BEGIN PROJECT B-3914  
BEGIN CONSTRUCTION

-BL-2 8+08.58 PINC  
-L- 12+19.56 (43.94'RT)

CHAMPION CATTLE & TREE FARMS,  
A NORTH CAROLINA LIMITED PARTNERSHIP  
D.B. 395 PG. 264

CHAMPION CATTLE & TREE FARMS,  
A NORTH CAROLINA LIMITED PARTNERSHIP  
D.B. 395 PG. 264



-L-	
PI Sta 11+89.30	PI Sta 15+15.50
$\Delta = 32^\circ 38' 00.8''$ (LT)	$\Delta = 59^\circ 58' 47.2''$ (RT)
$D = 14^\circ 59' 56.0''$	$D = 14^\circ 59' 56.0''$
$L = 217.57'$	$L = 399.89'$
$T = 111.83'$	$T = 220.46'$
$R = 382.00'$	$R = 382.00'$
$SE = .04$	$SE = .04$
$RO = 68'$	$RO = 68'$
* $V_{DES} = 30$ MPH	* $V_{DES} = 30$ MPH

\* DESIGN SPEED EXCEPTION REQUIRED

NOTE: - EXISTING BRIDGE TO BE  
REMOVED BY OTHERS.  
- DRIVEWAYS TO BE RECONNECTED  
PER THE RESIDENT ENGINEER  
- SEE SHEET 5 FOR -L- PROFILE  
- SEE SHEET S- FOR STRUCTURE PLANS

8/17/99  
11-OCT-2004 15:08  
D:\N3914\B-3914\4\_U0\_1.DGN  
C:\cshanks\BT\_DS181128