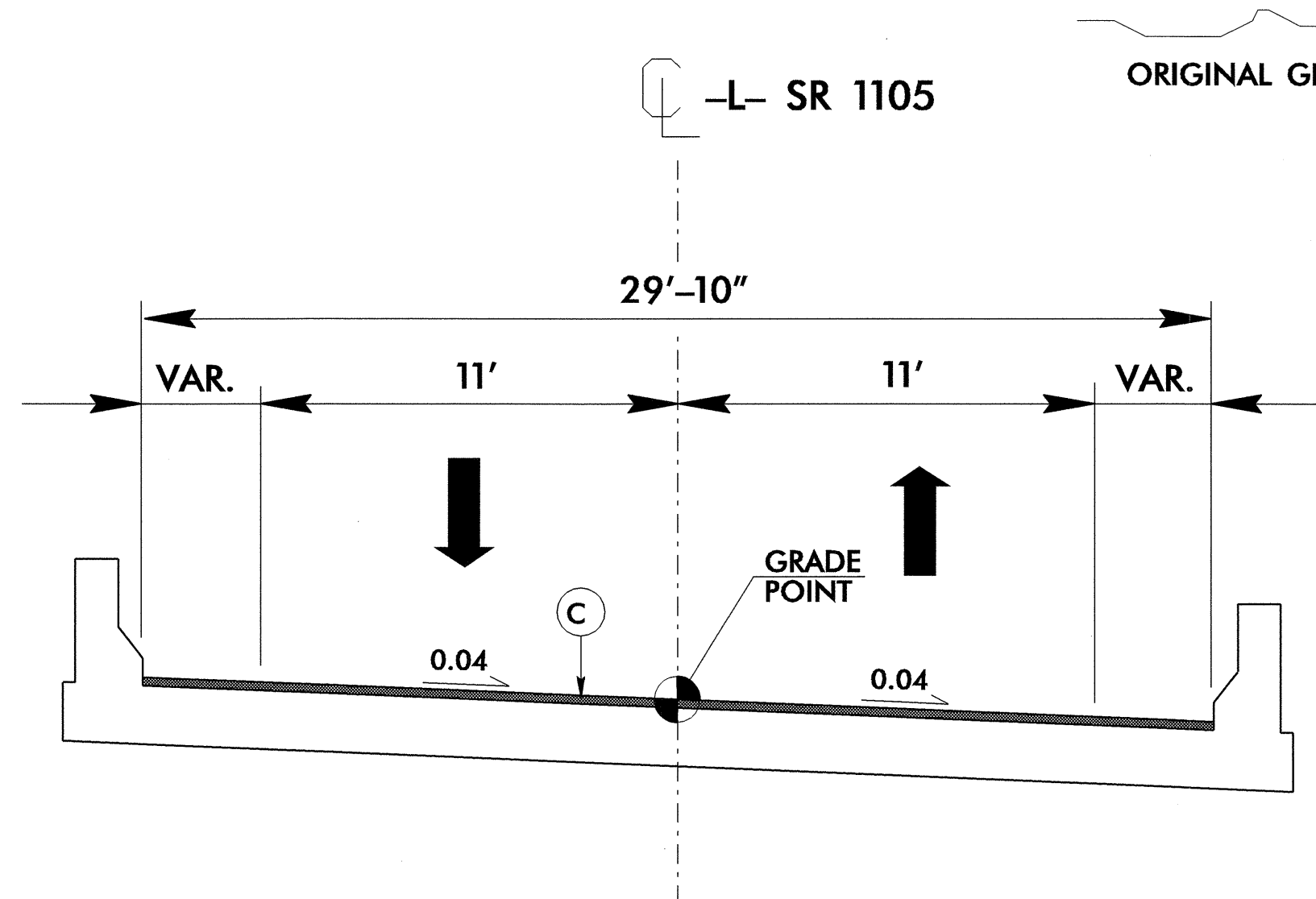
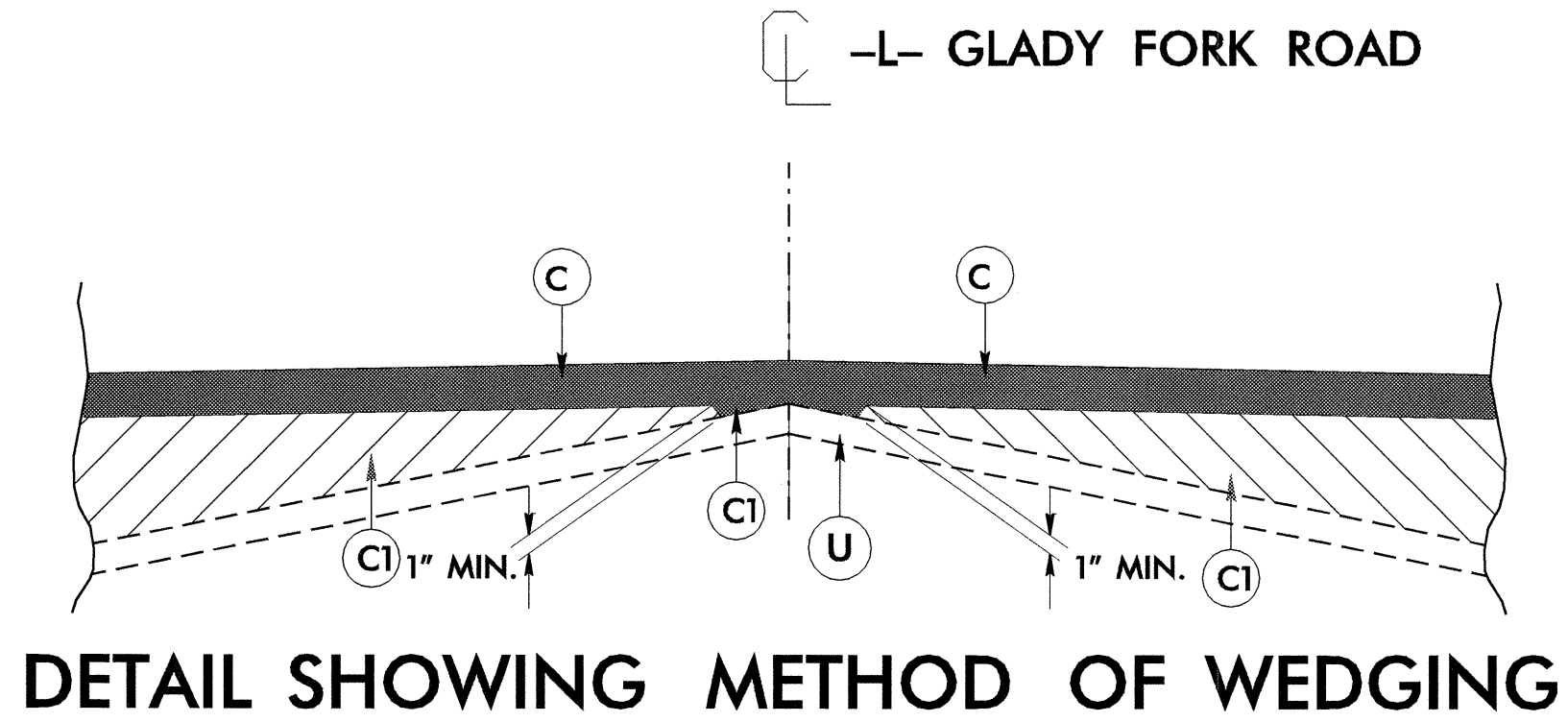


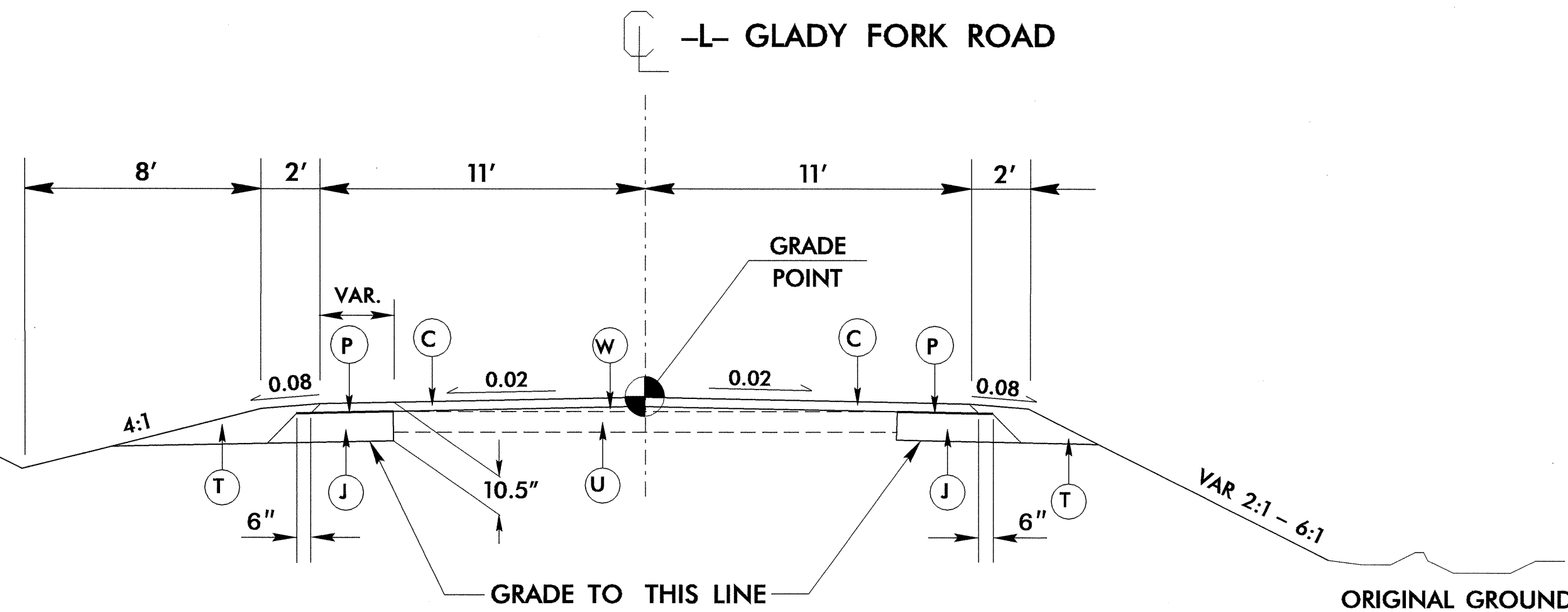
PAVEMENT SCHEDULE	
C	PROP. APPROX. 2.5" ASPHALT CONCRETE SURFACE COURSE, TYPE SF9.5A, AT AN AVERAGE RATE OF 137.5 LBS. PER SQ. YD. PER INCH IN EACH OF TWO LAYERS
C1	PROP. VAR. DEPTH ASPHALT CONCRETE SURFACE COURSE, TYPE SF9.5A, AT AN AVERAGE RATE OF 110 LBS. PER SQ. YD. PER 1" DEPTH, TO BE PLACED IN LAYERS NO LESS THAN 1" AND NOT TO EXCEED 1 1/2" IN DEPTH.
J	PROP. 8" AGGREGATE BASE COURSE.
P	PRIME COAT
T	EARTH MATERIAL.
U	EXISTING PAVEMENT.
W	VARIABLE DEPTH ASPHALT PAVEMENT. (SEE WEDGING DETAIL)

NOTE: PAVEMENT EDGE SLOPES ARE 1:1 UNLESS SHOWN OTHERWISE.



**TYPICAL SECTION ON STRUCTURE**

-L- STA. 14+33.84 TO STA. 14+83.87



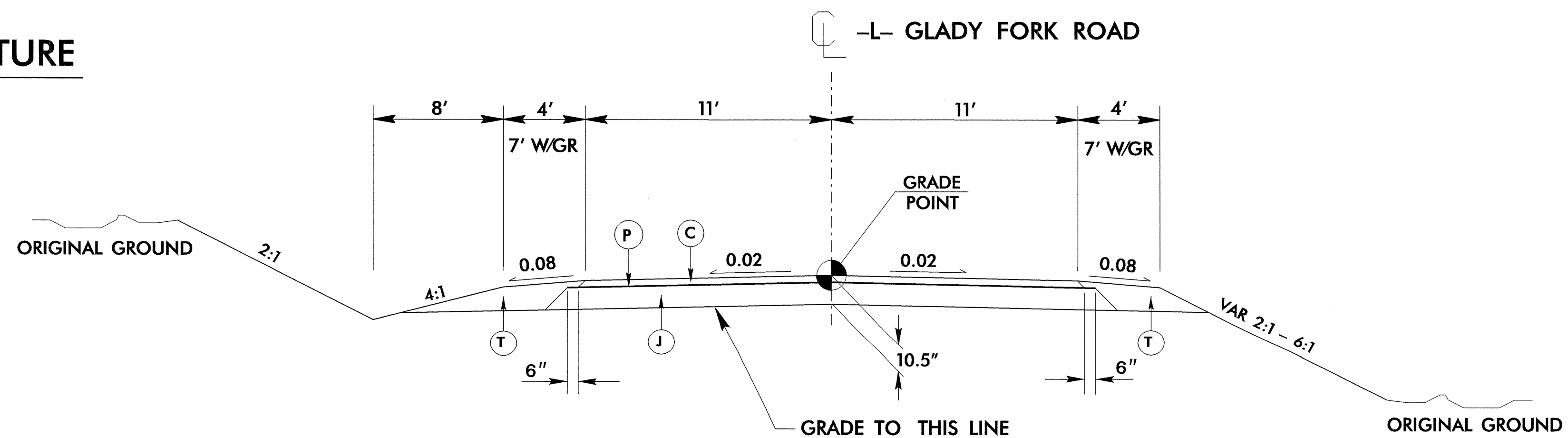
**TYPICAL SECTION NO. 1**

USE TYPICAL SECTION NO. 1 AS FOLLOWS:

- L- STA. 10+60.00 TO STA. 12+00.00
- L- STA. 15+29.00 TO STA. 17+00.00

MINIMUM RESURFACING AND WIDENING AS FOLLOWS:

- L- STA. 10+00.00 TO STA. 10+60.00
- L- STA. 17+00.00 TO STA. 18+00.00



**TYPICAL SECTION NO. 2**

USE TYPICAL SECTION NO. 2 AS FOLLOW:

- L- STA. 12+00.00 TO STA. 14+33.84 (BEGIN BRIDGE)
- L- STA. 14+83.87 (END BRIDGE) TO STA. 15+29.00