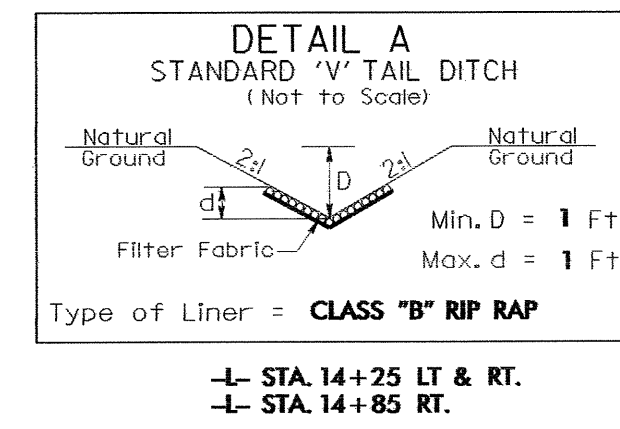
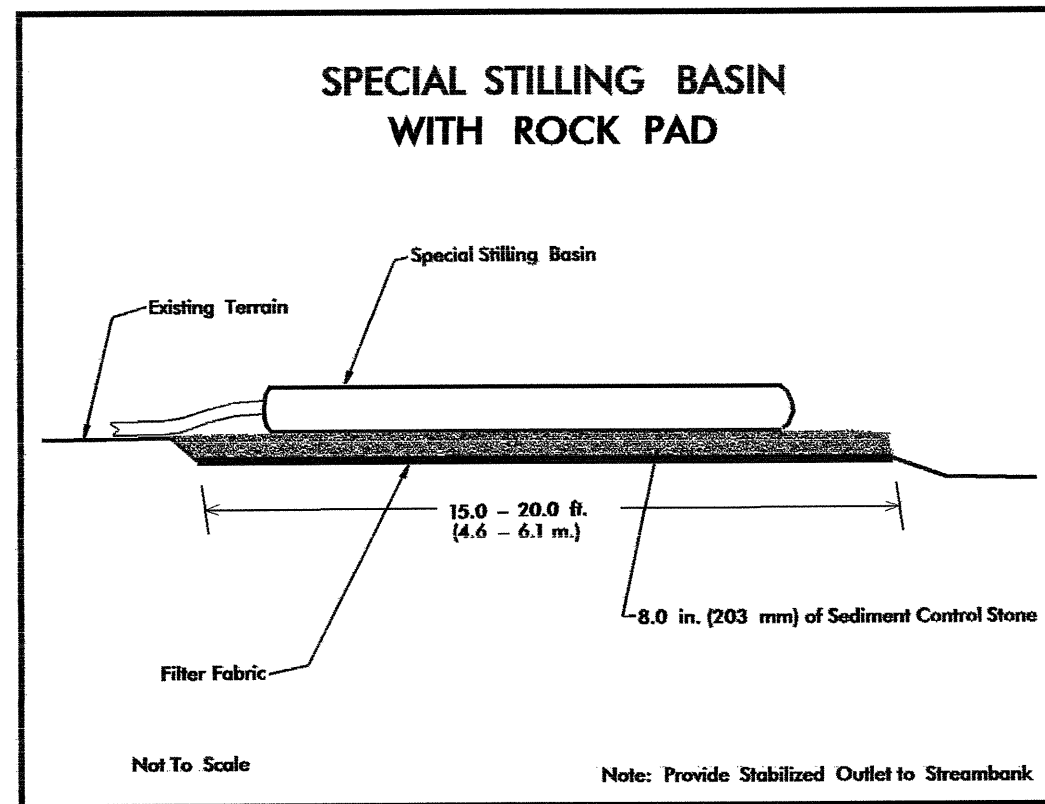
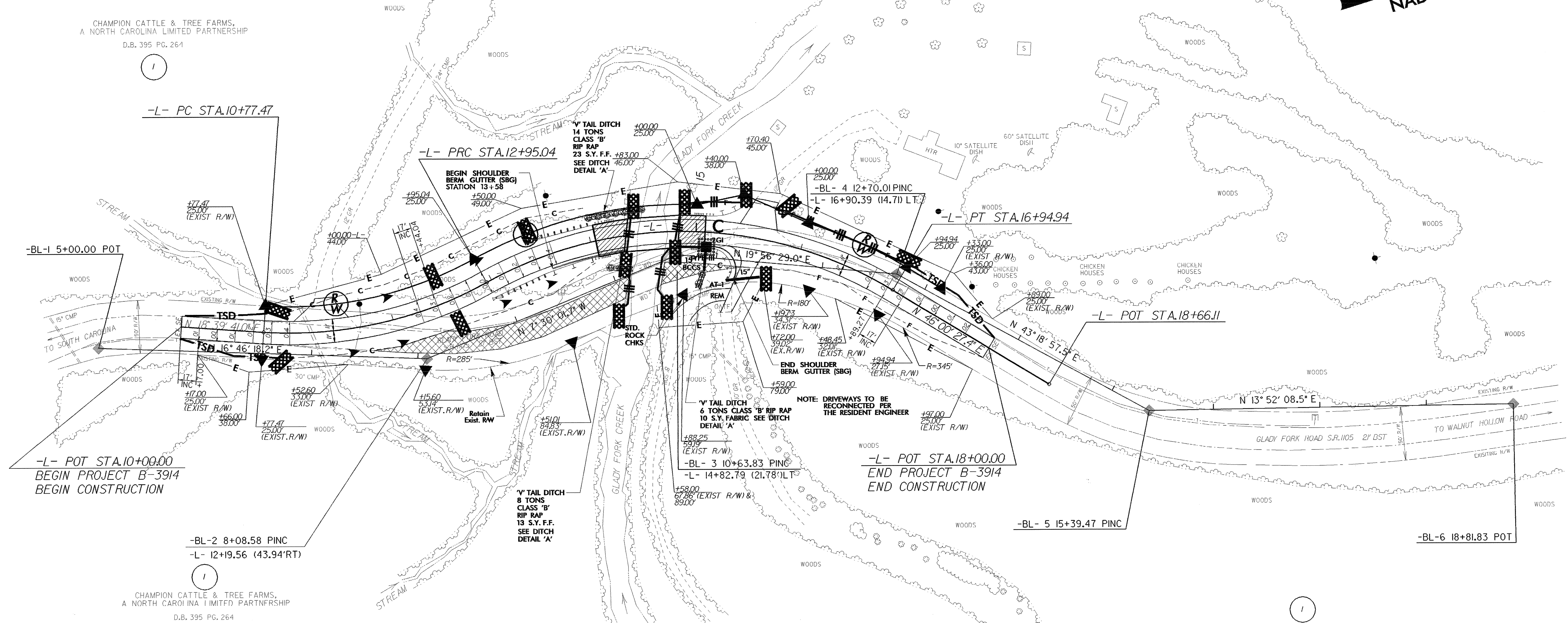
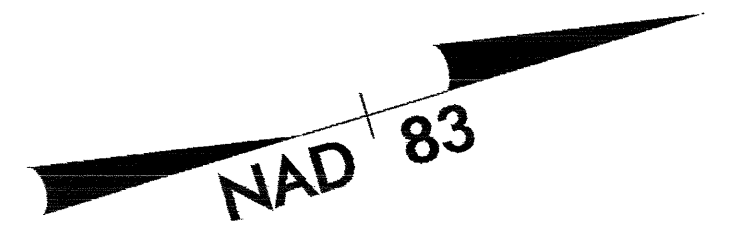


PROJECT REFERENCE NO.	SHEET NO.
B-3914	EC-4/CONST.4
R/W SHEET NO.	
ROADWAY DESIGN ENGINEER	HYDRAULICS ENGINEER



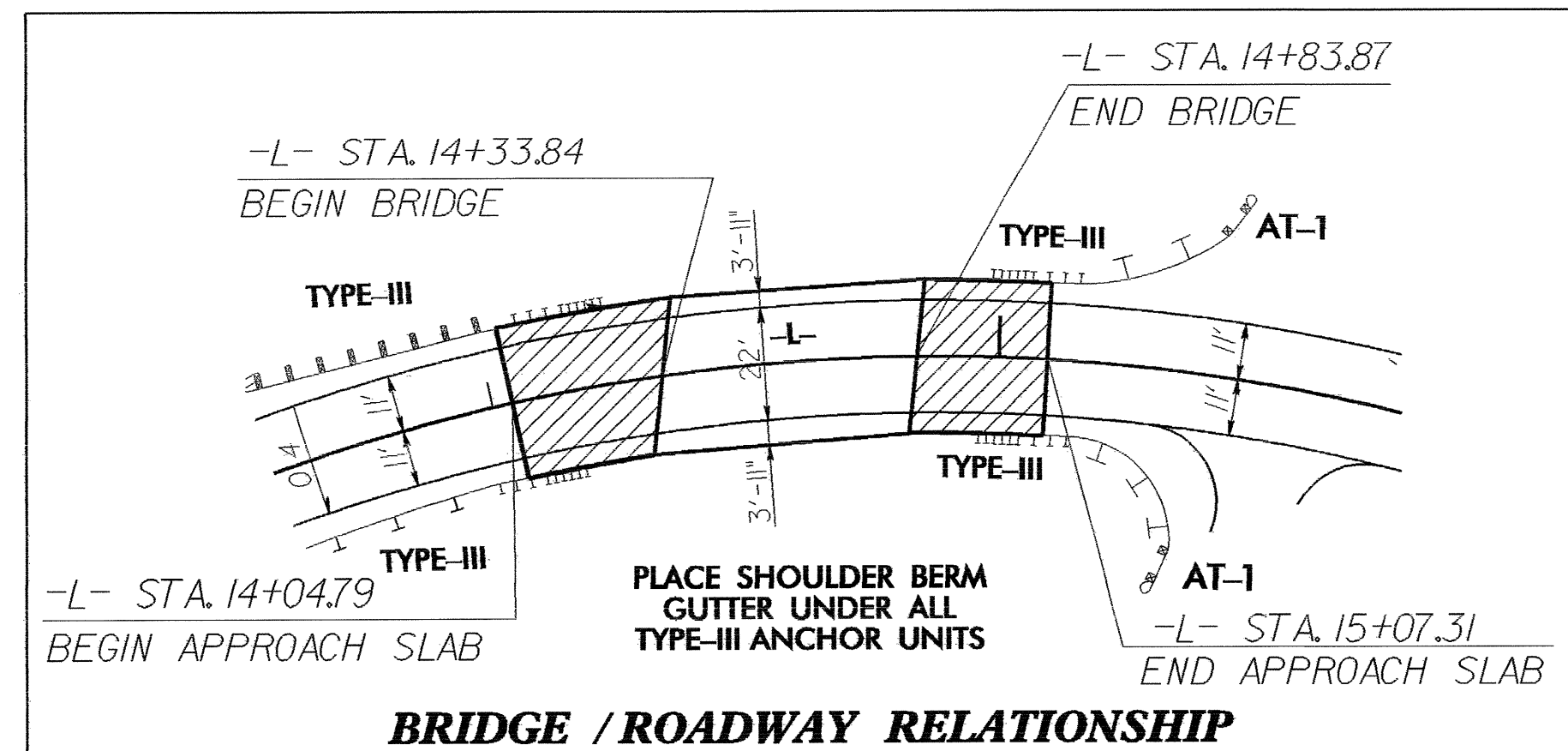
CHAMPION CATTLE & TREE FARMS,  
A NORTH CAROLINA LIMITED PARTNERSHIP  
D.B. 395 PG. 264

CHAMPION CATTLE & TREE FARMS,  
A NORTH CAROLINA LIMITED PARTNERSHIP  
D.B. 395 PG. 264



CHAMPION CATTLE & TREE FARMS,  
A NORTH CAROLINA LIMITED PARTNERSHIP  
D.B. 395 PG. 264

CHAMPION CATTLE & TREE FARMS,  
A NORTH CAROLINA LIMITED PARTNERSHIP  
D.B. 395 PG. 264



PI Sta 11+89.30 Δ = 32° 38' 00.8" (LT) D = 14' 59' 56.0" L = 217.57' T = 111.83' R = 382.00' SE = .04 RO = 68' *V <sub>DES</sub> = 30 MPH	PI Sta 15+15.50 Δ = 59° 58' 47.2" (RT) D = 14' 59' 56.0" L = 399.89' T = 220.46' R = 382.00' SE = .04 RO = 68' *V <sub>DES</sub> = 30 MPH
---	---

\* DESIGN SPEED EXCEPTION REQUIRED

NOTE: UTILIZE SPECIAL STILLING BASIN AND TEMPORARY ROCK SILT CHECK TYPE - A AS STILLING BASIN, WHERE APPLICABLE.

NOTE: EXISTING BRIDGE TO BE REMOVED BY OTHERS.

SEE SHEET 5 FOR -L- PROFILE  
SEE SHEET S- FOR STRUCTURE PLANS