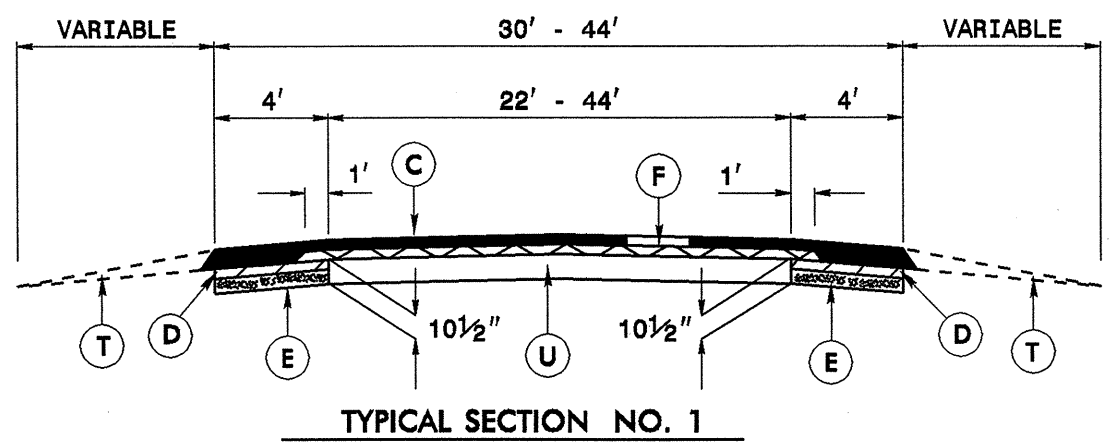
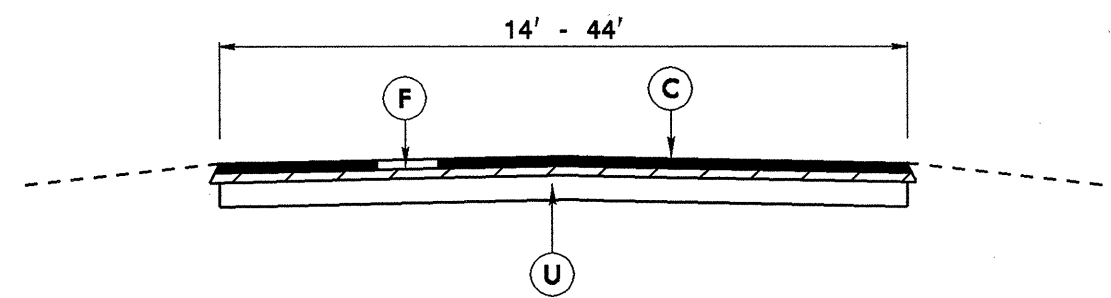


8/17/99



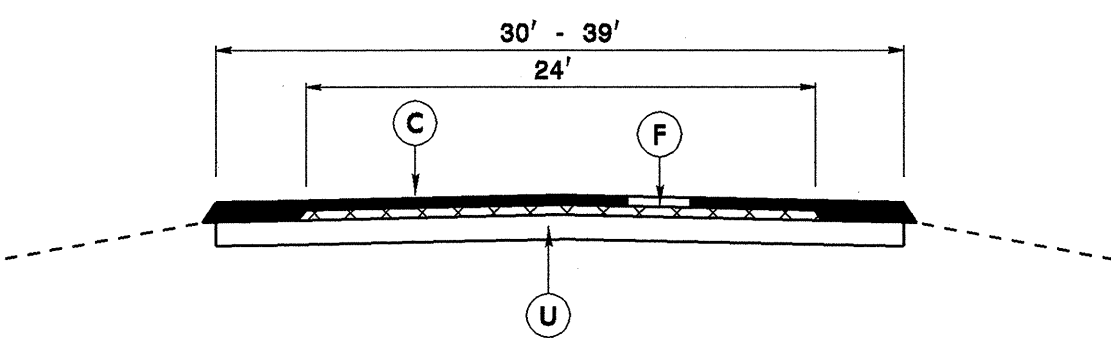
TYPICAL SECTION NO. 1

FROM THE ALAMANCE /ORANGE COUNTY LINE TO SR 1114 (BUCKHORN ROAD)  
 FROM SR 1309 (SHAMBLEY SERVICE STREET) TO APPROX. 359 FEET EAST OF SR 1312 (RICHMOND ROAD)  
 FROM APPROX. 1389 FEET EAST OF SR 1312 (RICHMOND ROAD) TO SR 1316 (GAINES CHAPEL ROAD)  
 FROM APPROX. 1778 FEET WEST OF SR 1004 (EFLAND-CEDAR GROVE ROAD) TO US 70 EAST & WEST SPLIT  
 FROM US 70 EAST/WEST SPLIT TO ENO RIVER BRIDGE  
 FROM ENO RIVER BRIDGE TO APPROX. 695 FEET EAST OF CENTRAL AVE. (NON-SYSTEM)  
 FROM EB SLIP RAMP AT REVERE ROAD (NON-SYSTEM) TO APPROX. 711 FEET EAST OF LAWDALE AVE. (NON-SYSTEM)



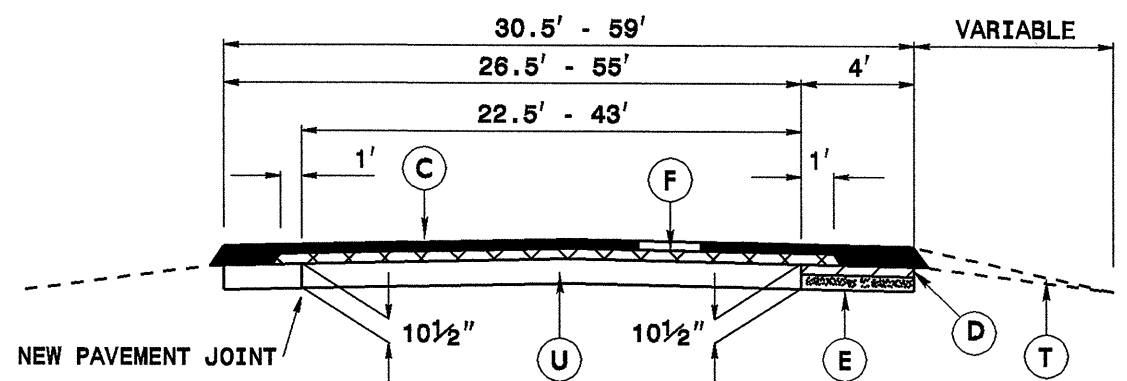
TYPICAL SECTION NO. 2

FROM SR 1114 (BUCKHORN ROAD) TO SR 1309 (SHAMBLEY SERVICE STREET)  
 FROM SR 1316 (GAINES CHAPEL ROAD) TO APPROX. 1778 FEET WEST OF SR 1004 (EFLAND-CEDAR GROVE ROAD)  
 US 70 EAST AND WEST SPLIT  
 FROM APPROX. 695 FEET EAST OF CENTRAL AVE. (NON-SYSTEM) TO EB SLIP RAMP AT REVERE ROAD (NON-SYSTEM)



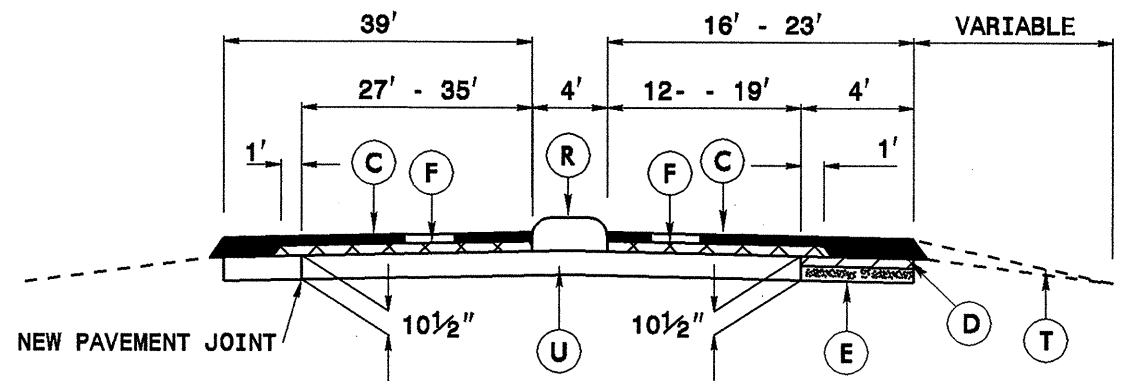
TYPICAL SECTION NO. 3

FROM APPROX. 359 FEET EAST OF SR 1312 (RICHMOND ROAD) TO APPROX. 1389 FEET EAST OF SR 1312 (RICHMOND ROAD)



TYPICAL SECTION NO. 4

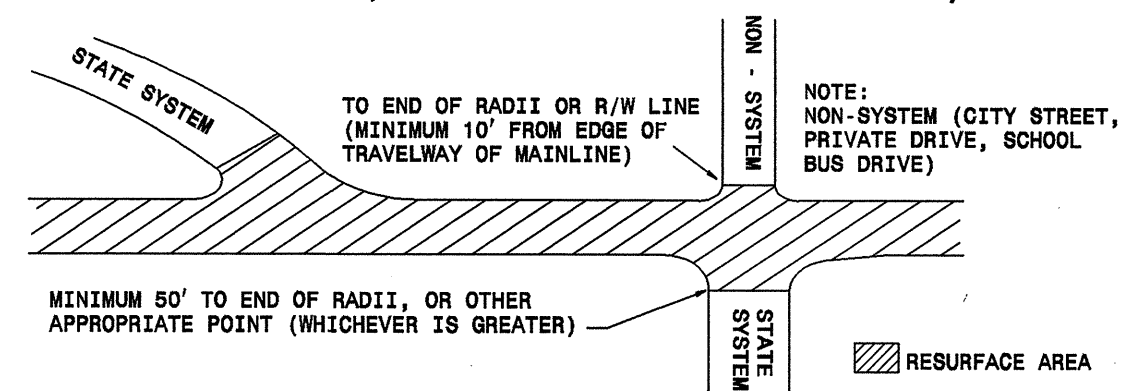
FROM APPROX. 711 FEET EAST OF LAWDALE AVE. (NON-SYSTEM) TO THE NOSE OF THE 4' MONOLITHIC CONCRETE ISLAND 325 FEET WEST OF NC 86



TYPICAL SECTION NO. 5

FROM THE NOSE OF THE 4' MONOLITHIC CONCRETE ISLAND 325 FEET WEST OF NC 86 TO NC 86

PAVING DETAIL (MAIN LINE IS BEING RESURFACED)



PAVEMENT SCHEDULE

C	PROP. APPROX. 2 1/2" ASPHALT CONCRETE SURFACE COURSE, TYPE S9.5C, AT AN AVERAGE RATE OF 140 LBS. PER SQ. YD. IN EACH OF TWO LAYERS.
D	PROP. APPROX. 2 1/2" ASPHALT CONCRETE INTERMEDIATE COURSE, TYPE I19.0C, AT AN AVERAGE RATE OF 285 LBS. PER SQ. YD.
E	PROP. APPROX. 8" ASPHALT CONCRETE BASE COURSE, TYPE B25.0C, AT AN AVERAGE RATE OF 456 LBS. PER SQ. YD. IN EACH OF TWO LAYERS.
F	ASPHALT SURFACE TREATMENT, NO. 78M STONE
R	EXISTING MONOLITHIC CONCRETE ISLAND.
T	SHOULDER RECONSTRUCTION
U	EXISTING PAVEMENT.