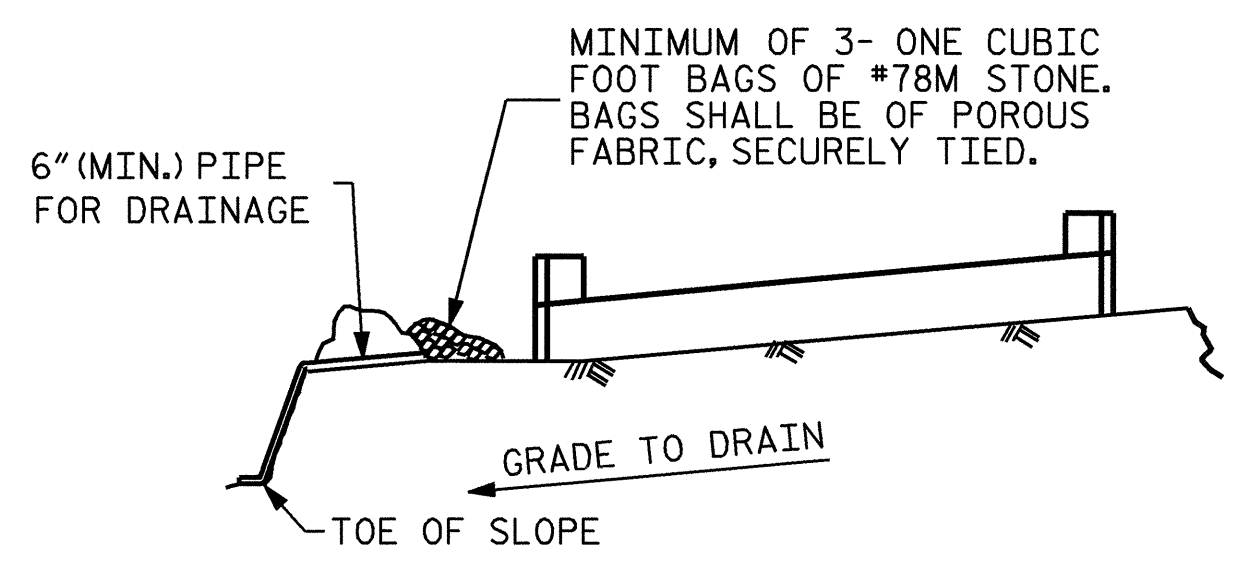


BAR TYPES		BILL OF MATERIAL FOR END BENT #2				
BAR NO.	SIZE	TYPE	LENGTH	WEIGHT		
B1	#9	1	38'-0"	1034		
B2	#6	STR	35'-8"	107		
B3	#4	STR	19'-1"	102		
B4	#4	STR	2'-5"	15		
D1	#6	STR	1'-6"	45		
H1	#4	2	5'-10"	78		
H2	#4	STR	2'-7"	14		
S1	#4	3	3'-2"	68		
S2	#4	4	7'-5"	159		
S3	#4	5	6'-6"	52		
U1	#4	6	4'-5"	12		
V1	#4	STR	4'-2"	100		
REINFORCING STEEL				1786	LBS	

CLASS AA CONCRETE BREAKDOWN		
POUR #1 CAP & LOWER PART OF WINGS	C.Y.	10.0
POUR #2 UPPER PART OF WINGS	C.Y.	1.1
POUR #3 LATERAL GUIDES	C.Y.	0.1
TOTAL CLASS A CONCRETE	C.Y.	11.2

HP 12 X 53 STEEL PILES		
NO. 6	LIN. FT.	90

ALL BAR DIMENSIONS ARE OUT TO OUT.

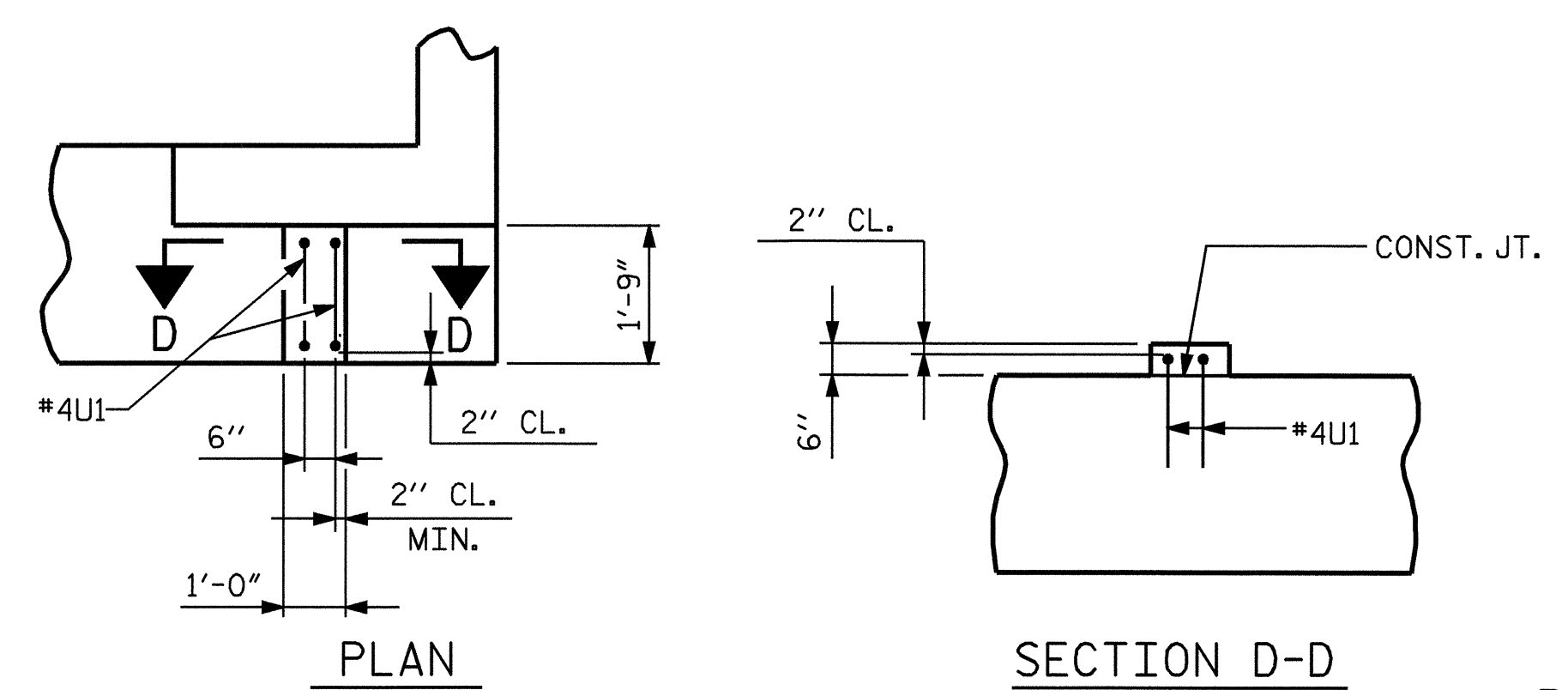


BAGGED STONE AND PIPE SHALL BE PLACED IMMEDIATELY AFTER COMPLETION OF END BENT EXCAVATION. PIPE MAY BE EITHER CONCRETE, CORRUGATED STEEL, CORRUGATED ALUMINUM ALLOY, OR CORRUGATED PLASTIC. PERFORATED PIPE WILL NOT BE ALLOWED.

BAGGED STONE SHALL REMAIN IN PLACE UNTIL THE ENGINEER DIRECTS THAT IT BE REMOVED. THE CONTRACTOR SHALL REMOVE AND DISPOSE OF SILT ACCUMULATIONS AT BAGGED STONE WHEN SO DIRECTED BY THE ENGINEER. BAGS SHALL BE REMOVED AND REPLACED WHENEVER THE ENGINEER DETERMINES THAT THEY HAVE DETERIORATED AND LOST THEIR EFFECTIVENESS.

NO SEPARATE PAYMENT WILL BE MADE FOR THIS WORK AND THE ENTIRE COST OF THIS WORK SHALL BE INCLUDED IN THE UNIT CONTRACT PRICE BID FOR THE SEVERAL PAY ITEMS.

TEMPORARY DRAINAGE AT END BENT

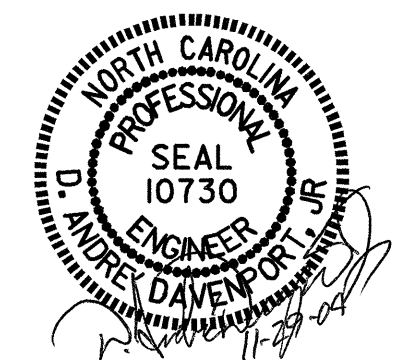


LATERAL GUIDE DETAIL
(EACH SIDE SIMILAR)

PROJECT NO. B-3670
JOHNSTON COUNTY
STATION: 15+41.00 -L-
SHEET 3 OF 3

STATE OF NORTH CAROLINA
DEPARTMENT OF TRANSPORTATION
RALEIGH

**SUBSTRUCTURE
END BENT #2**



DRAWN BY: D. G. ELY/DAD DATE: 6-03
CHECKED BY: H.T. BARBOUR DATE: 8-03

REVISIONS						SHEET NO.
NO.	BY:	DATE:	NO.	BY:	DATE:	S-13
1			3			TOTAL SHEETS
2			4			17