

8/17/99
09-MAR-2004 16:40
R:\Utilities\Drawings\B3651s_UC2.psh
AutoCAD LT 2004

REVISIONS

R/W REVISION PARCELS 2,5 / / 03

MH-1 TOP=655.39 8" OUT=648.89	MH-2 TOP=643.74 8" IN=635.59 8" OUT=635.16	MH-3 TOP=626.11 8" IN=621.03 8" OUT=620.91	MH-4 TOP=627.97 8" IN=621.63 8" OUT=620.89	MH-5 TOP=632.15 12" IN=620.60 12" OUT=620.56
MH-6 TOP=625.38 12" IN=619.02	MH-7 TOP=639.16 8" OUT=633.62	MH-8 TOP=641.2 8" IN=632.36 8" OUT=632.31	MH-9 TOP=632.29	
CB-1 TOP=637.22 18" IN=634.10 18" OUT=633.16	CB-2 TOP=637.22 18" IN=629.01 18" OUT=628.91	CB-3 TOP=629.74 18" IN=625.98 18" OUT=625.73	CB-4 TOP=631.00 18" IN=627.52 18" OUT=627.40	JB/MH-5 TOP=635.71 18" IN=631.51 18" OUT=631.40
CB-6 TOP=637.48 18" IN=633.80 18" OUT=632.95	CB-7 TOP=637.77 18" IN=634.25 18" OUT=634.18			

-L- PI Sta 11+95.12 Δ = 1° 23' 57.1" (RT) D = 5' 00" 00.0" L = 227.98' T = 114.37' R = 1,145.92' SE = 0.04 RO = 120'	-Y2- PI Sta 11+98.97 Δ = 7° 59' 55.1" (LT) D = 16' 22" 12.8" L = 48.86' T = 24.47' R = 350.00' SE = EXISTING RO = EXISTING
--	--

TRAFFIC DIAGRAM

1999 ADT	WINTERSET DR (-Y1-)
2025 ADT	DHV = 11%, DIR = 65%, TTST = 1%, DUAL = 2%
	DHV = 11%, DIR = 65%, TTST = 1%, DUAL = 3%
SR 3143 (-L-)	1500 3700 1500 3800

PROJECT REFERENCE NO. **B-3651** SHEET NO. **UC-2**

DESIGNED BY: **ABY**

DRAWN BY: **ABY**

CHECKED BY: **JSM**

APPROVED BY: **JSM**

REVISIONS:

NORTH CAROLINA DEPARTMENT OF TRANSPORTATION

DESIGN SERVICES UNIT
PHONE: (919) 250-4128
FAX: (919) 250-4119

UTILITY CONSTRUCTION PLANS ONLY



UTILITY CONSTRUCTION

NOTE: CONTRACTOR SHALL MAKE ALL CONNECTIONS USING NECESSARY FITTINGS

ALL EXISTING WATER AND SEWER LINES ALONG THIS PROJECT ARE OWNED BY THE CITY OF GREENSBORO

PROP. 410' FILL OR REMOVE ABANDONED 12" PIPE (D.I. WATER)

PROP. 1 BREAKDOWN & REBUILD EXISTING MANHOLE

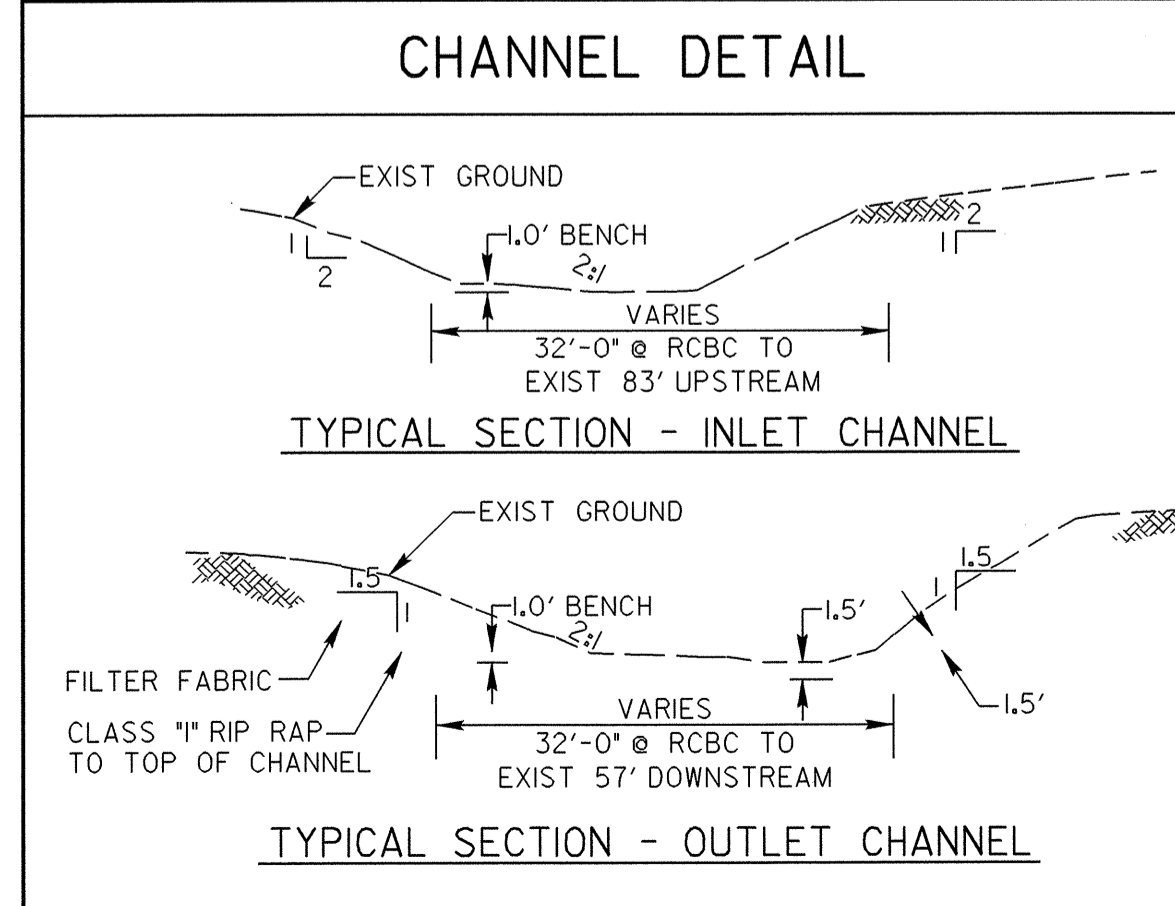
PROP. 27'-12" D.I. RESTRAINED JOINT WATER PIPE, PC350 4-12" 45° R.J.D.I. BENTS

PROP. 1- RELOCATE EXISTING FIRE HYDRANT 52'- 6" D.I. R.J. WATER PIPE, PC 350 1- 6" WP 1- 12" X 6" D.I. R.J.TEE

PROP. 508'-12" D.I. RESTRAINED JOINT WATER PIPE, PC 350 6-12" 45° D.I.R.J. BENTS

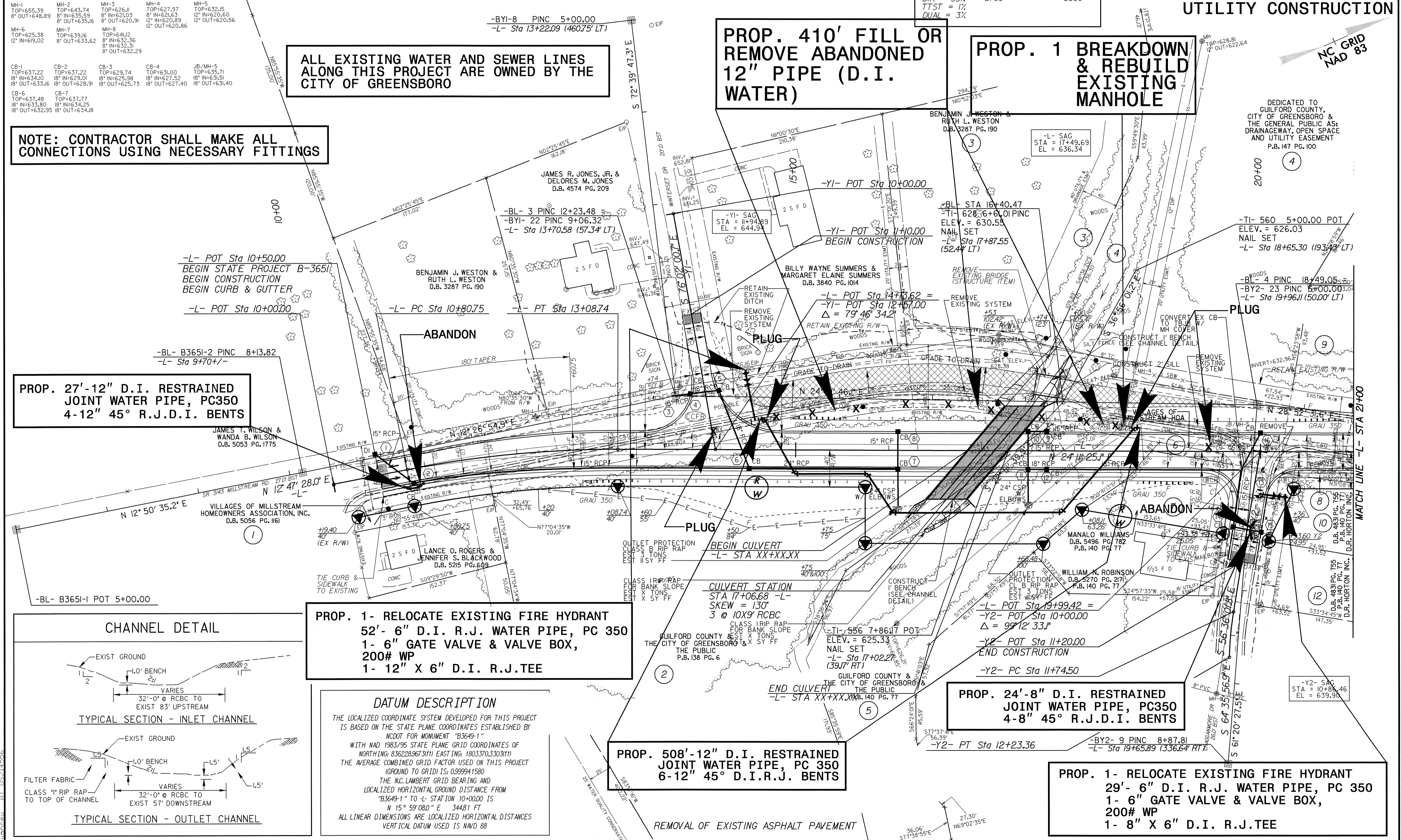
PROP. 24'-8" D.I. RESTRAINED JOINT WATER PIPE, PC350 4-8" 45° R.J.D.I. BENTS

PROP. 1- RELOCATE EXISTING FIRE HYDRANT 29'- 6" D.I. R.J. WATER PIPE, PC 350 1- 6" GATE VALVE & VALVE BOX, 200# WP 1- 8" X 6" D.I. R.J.TEE



DATUM DESCRIPTION

THE LOCALIZED COORDINATE SYSTEM DEVELOPED FOR THIS PROJECT IS BASED ON THE STATE PLANE COORDINATES ESTABLISHED BY NC DOT FOR MONUMENT "B3649-1" WITH NAD 1983/95 STATE PLANE GRID COORDINATES OF NORTHING: 836228967.3111 EASTING: 1803370.33030111 THE AVERAGE COMBINED GRID FACTOR USED ON THIS PROJECT (GROUND TO GRID) IS: 0.9999941580 THE N.C. LAMBERT GRID BEARING AND LOCALIZED HORIZONTAL GROUND DISTANCE FROM "B3649-1" TO -L- STA 10+00.00 IS N 15° 59' 08.0" E 3448.1 FT ALL LINEAR DIMENSIONS ARE LOCALIZED HORIZONTAL DISTANCES VERTICAL DATUM USED IS NAVD 88



DEDICATED TO GUILFORD COUNTY, CITY OF GREENSBORO & THE GENERAL PUBLIC AS DRAINAGEWAY, OPEN SPACE AND UTILITY EASEMENT P.B. 147 PG. 100

NC GRID NAD 83

MATCH LINE -L- STA 21+00

REMOVAL OF EXISTING ASPHALT PAVEMENT