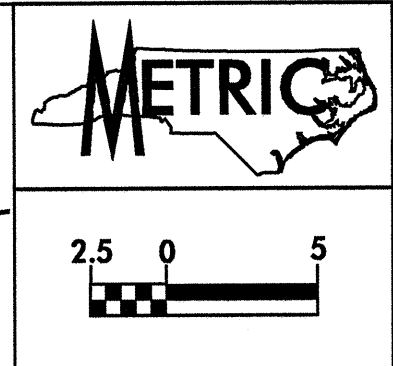
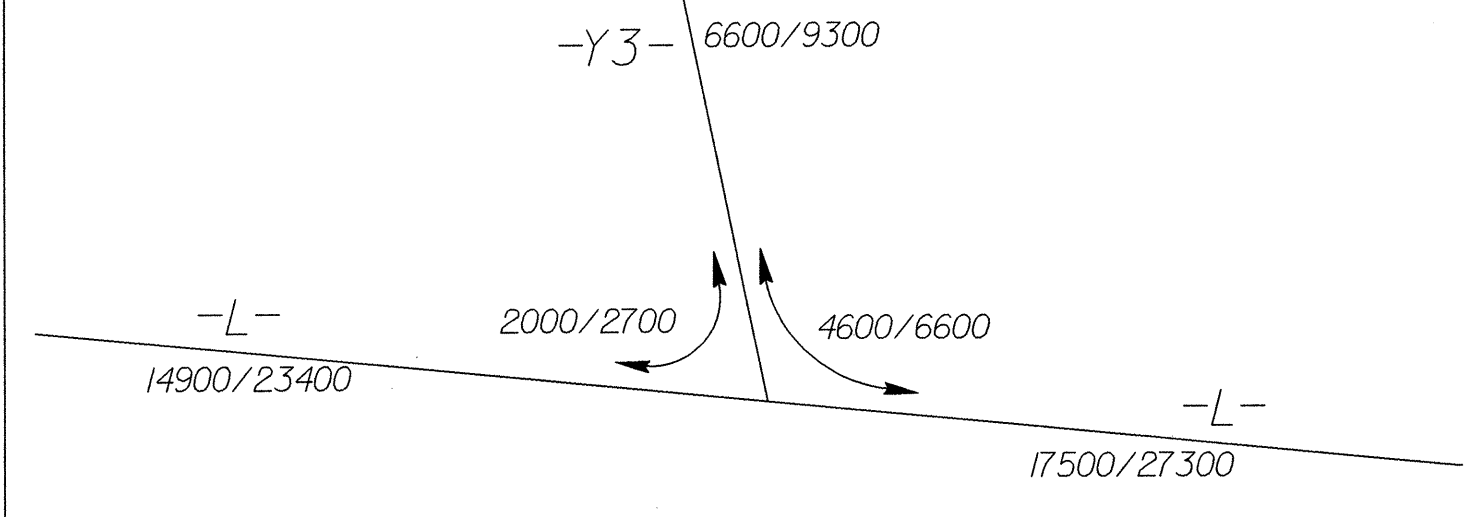


2001 ADT
2030 ADT



PROJECT REFERENCE NO. U-2408	SHEET NO. 9
R/W SHEET NO.	
ROADWAY DESIGN ENGINEER NORTH CAROLINA PROFESSIONAL ENGINEER SEAL 9384 TERRY S. DAVENPORT 9/21/04	HYDRAULICS ENGINEER NORTH CAROLINA PROFESSIONAL ENGINEER SEAL 9384 HENRY WELLS, JR. 9/25/04
CONST. REV.	R/W REV.

MATCHLINE -Y3- STA 10+60 SHEET 32

13
CORINTHIAN REALTY, LLC
D.B. 3909 PG. 385

-LBL- 7 Sta.14+21.953
-Y3BL- 7 Sta.6+40.718
(-L- Sta.18+45.708 10.728 LT)
(-Y3- Sta.11+12.384 22.734 RT)

-L- POC Sta.18+70.665
-Y3- POT Sta.11+28.021

14
CLARENCE W. SMITH
D.B. 1794 PG. 58

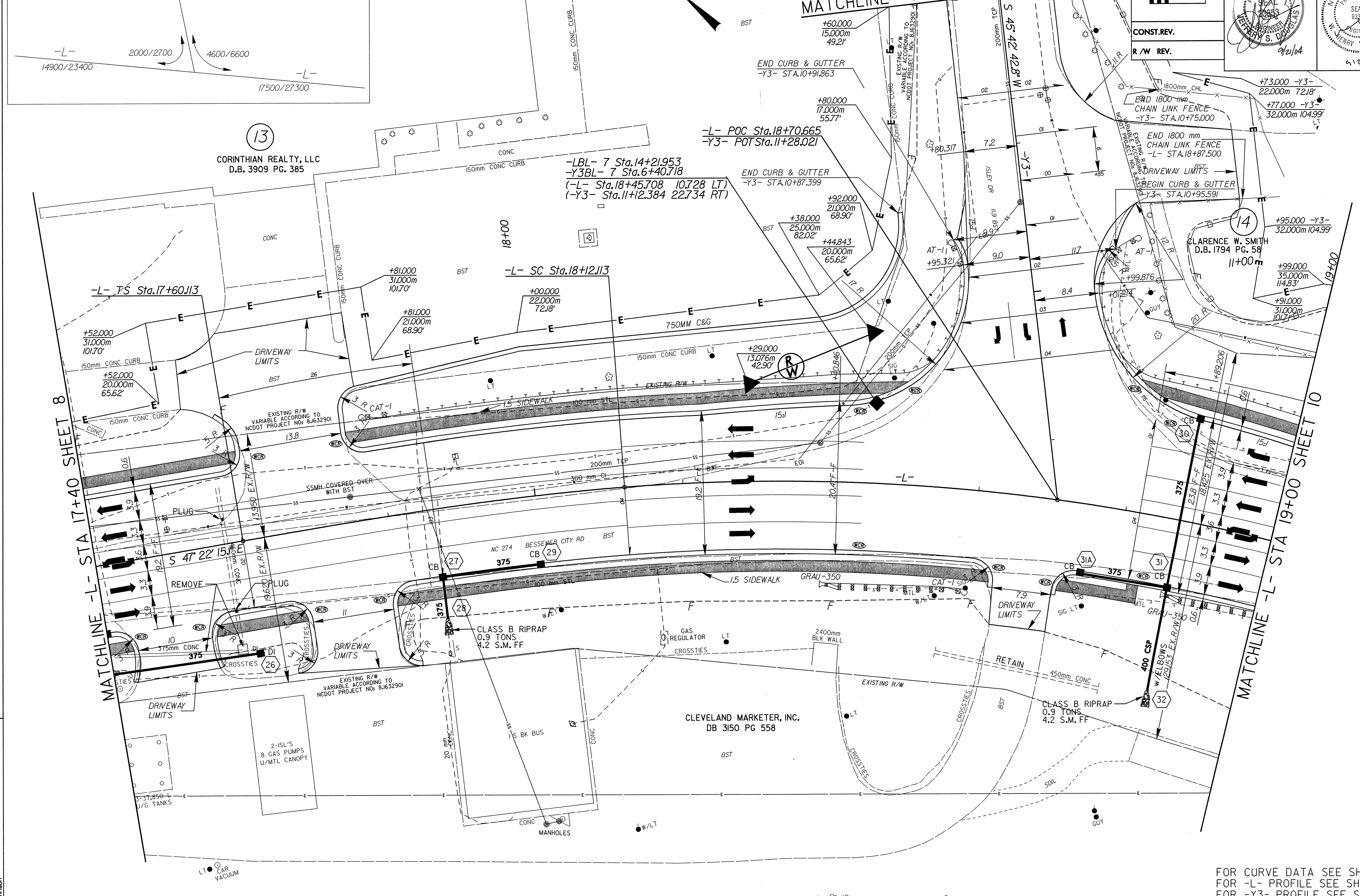
-L- TS Sta.17+60.113

-L- SC Sta.18+12.113

MATCHLINE -L- STA 17+40 SHEET 8

MATCHLINE -L- STA 19+00 SHEET 10

22-SEP-2004 15:15
C:\Academy\Projects\Dot\ncdot\U2408\p\c\j\2408a09.dwg
Johnson



FOR CURVE DATA SEE SHEET 21
FOR -L- PROFILE SEE SHEET 37
FOR -Y3- PROFILE SEE SHEET 52