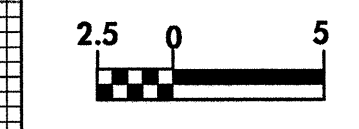




PROJECT REFERENCE NO. U-2408	SHEET NO. 39
ROADWAY DESIGN ENGINEER NORTH CAROLINA PROFESSIONAL ENGINEER W. HENRY WELLS 9/16/04	HYDRAULICS ENGINEER NORTH CAROLINA PROFESSIONAL ENGINEER W. HENRY WELLS 9/16/04

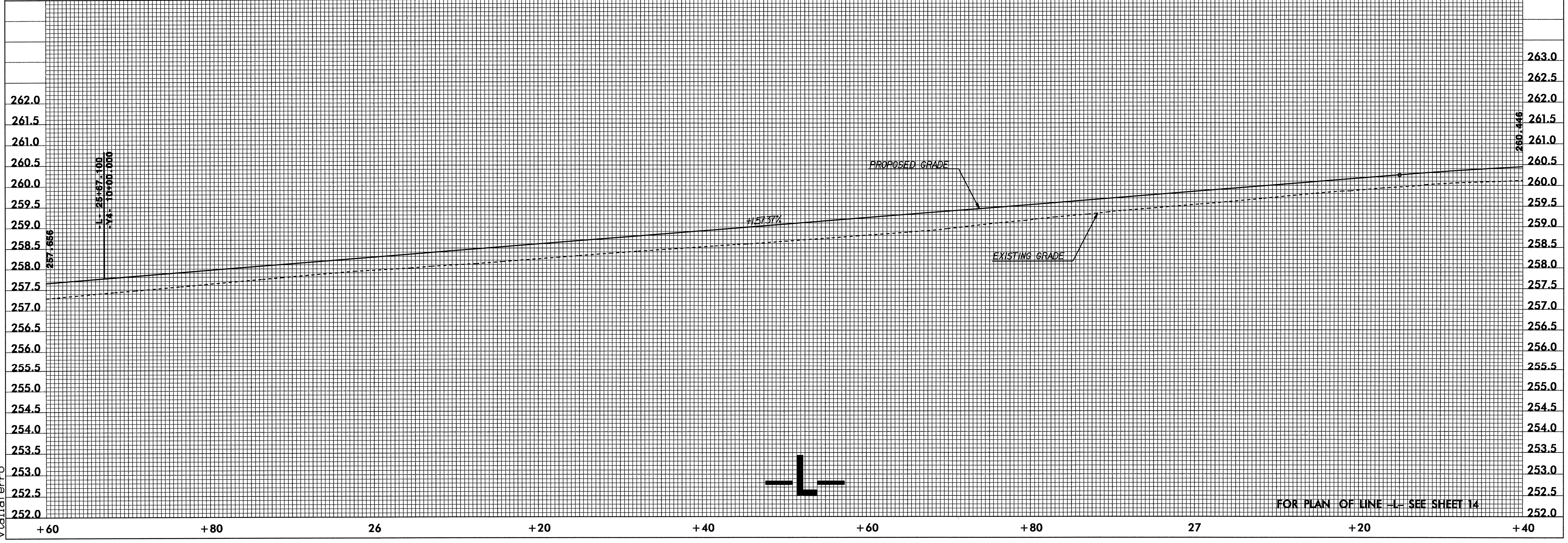
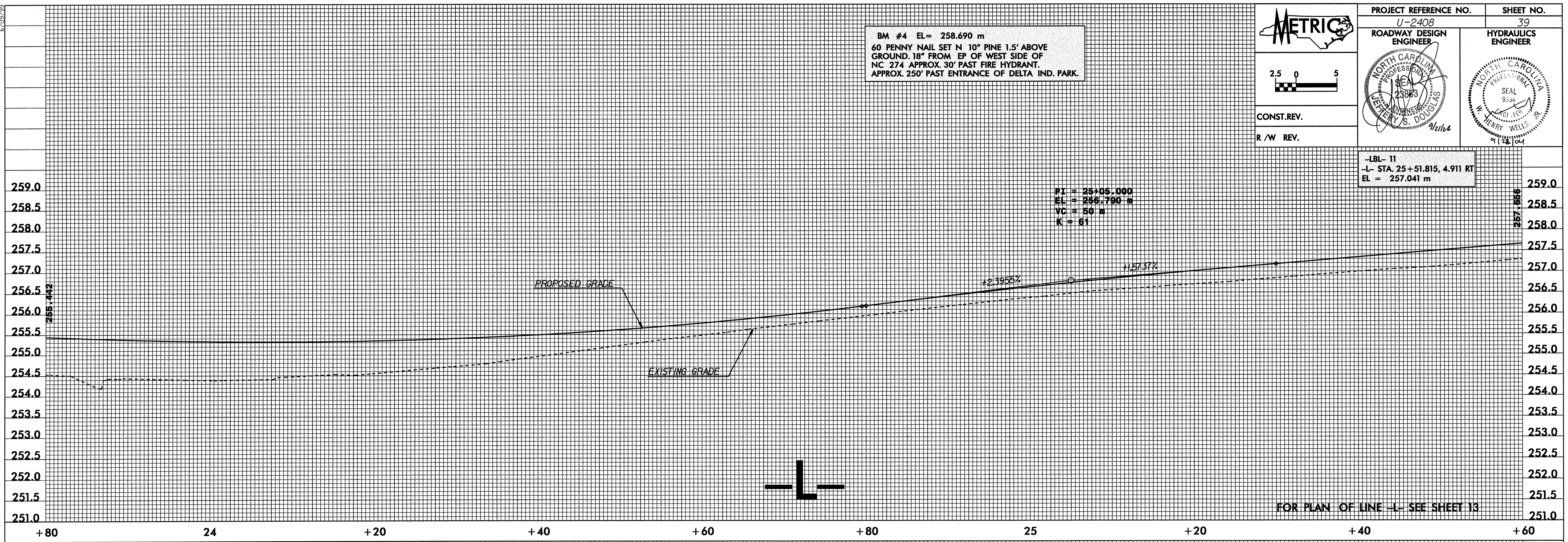
BM #4 EL = 258.690 m
60 PENNY NAIL SET N 10" PINE 1.5' ABOVE GROUND. 18" FROM EP OF WEST SIDE OF NC 274 APPROX. 30' PAST FIRE HYDRANT. APPROX. 250' PAST ENTRANCE OF DELTA IND. PARK.



CONST. REV.
R /W REV.

-LBL- 11
-L- STA. 25+51.815, 4.911 RT
EL = 257.041 m

PI = 25+05.000
EL = 256.790 m
VC = 50 m
K = 61



08_SEP_2004_08:58
y:\roadway\Projects\Dot\ncdot\U2408\proj\U2408.pf1
vtaliferro