

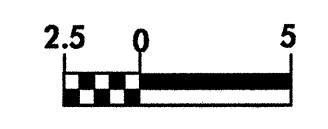
5/10/09

-LBL- 22
-L- STA. 47+99.994, 4.012 RT
EL = 253.390

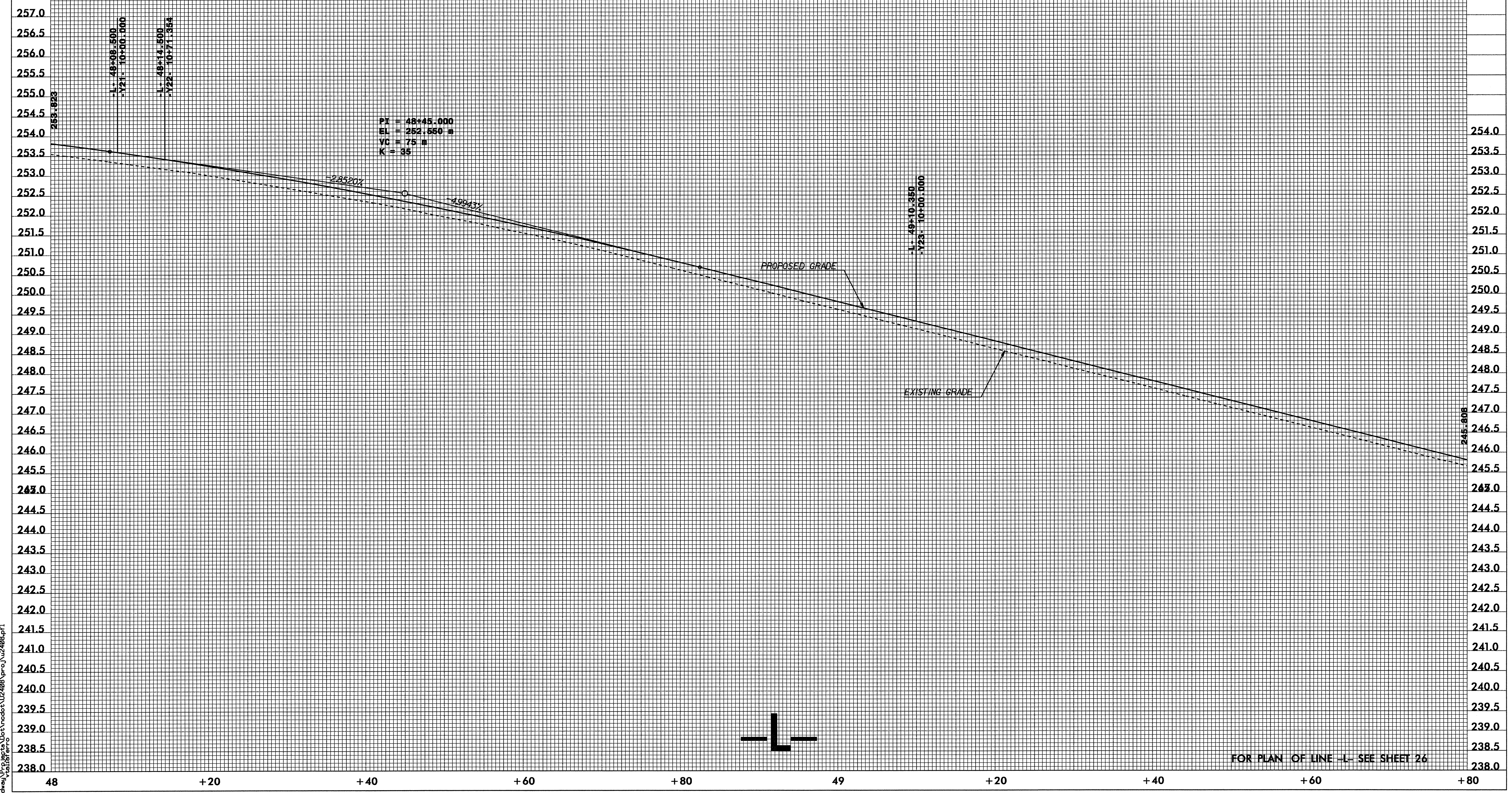
-LBL- 45
-L- STA. 49+04.910, 7.390 RT
EL = 249.985 m



PROJECT REFERENCE NO. U-2408	SHEET NO. 47
ROADWAY DESIGN ENGINEER NORTH CAROLINA PROFESSIONAL ENGINEER SEAL W. HENRY WELLS, JR. 9/22/04	HYDRAULICS ENGINEER NORTH CAROLINA PROFESSIONAL ENGINEER SEAL W. HENRY WELLS, JR. 9/22/04



CONST. REV.
R / W REV.



FOR PLAN OF LINE -L- SEE SHEET 26

2:\SEP-2004\4608\p\road\dwg\112408\p\road\112408.pfl
y:\road\dwg\112408\p\road\112408.pfl