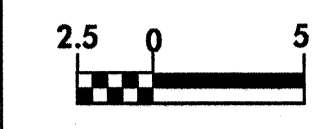




PROJECT REFERENCE NO. U-2408	SHEET NO. 49
ROADWAY DESIGN ENGINEER S. DOUGLAS	HYDRAULICS ENGINEER W. WELLS
<i>9/16/04</i>	<i>9/22/04</i>

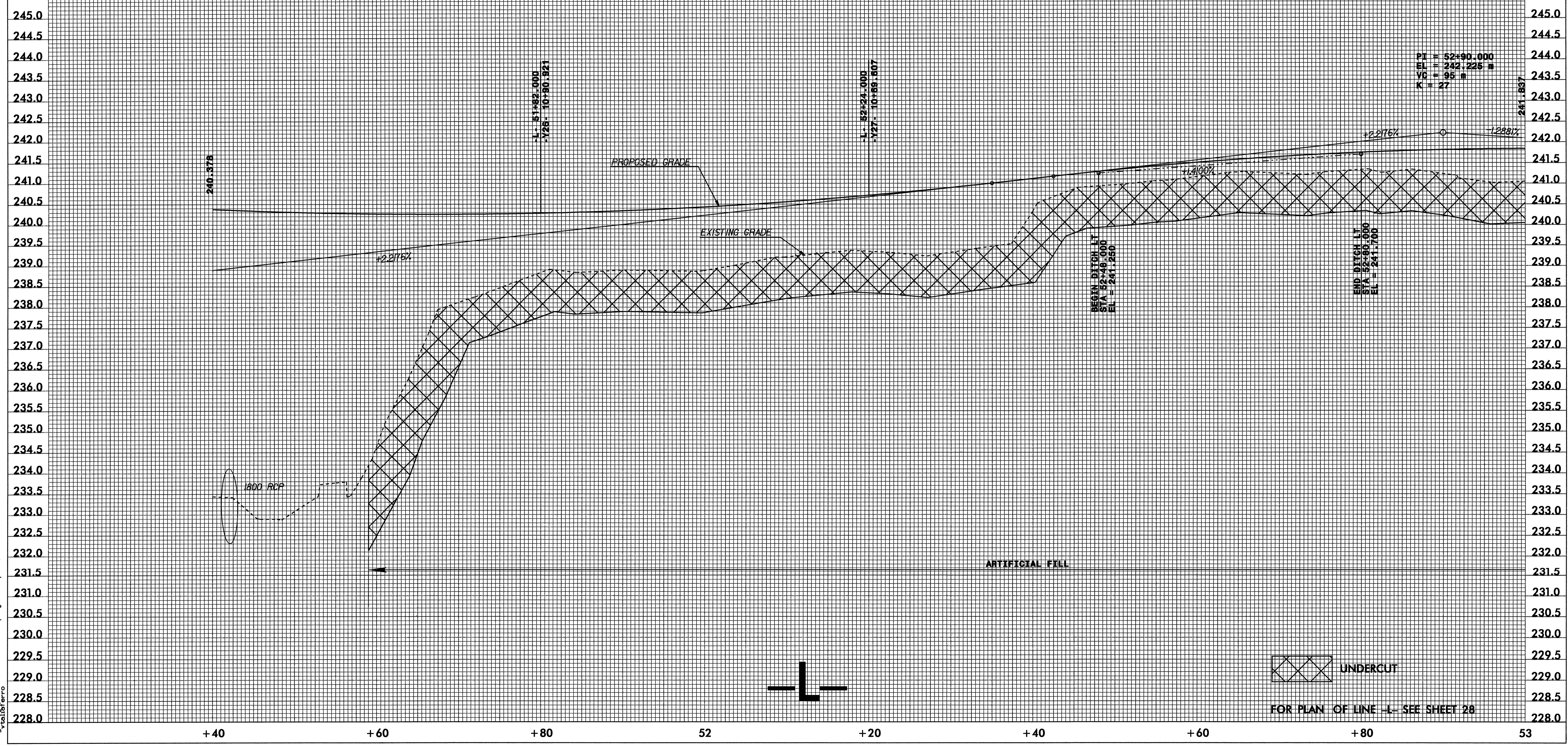


CONST.REV.
R / W REV.

BM #10 EL=240.905 m
CHISELED SQUARE ON EAST CORNER OF CONC. SLAB AT TELEPHONE BOOTH, 11' FROM EP OF EAST SIDE OF BESSEMER CITY ROAD, 100' PAST KELLY DINER, 200' BACK FROM INTERSECTION OF BESSEMER CITY ROAD AND MAXTON AVE.

-LBL- 24
-L-L STA. 52+19.362, 15.749 LT
EL = 241.957 m

DRAINAGE STRUCTURE NO.	
DRAINAGE AREA	= 34.4 HA
DESIGN FREQUENCY	= 50 YRS
DESIGN DISCHARGE	= 6.1 CMS
DESIGN HW ELEVATION	= 235.36M
100 YEAR DISCHARGE	= 7.2 CMS
100 YEAR HW ELEVATION	= 235.63M
OVERTOPPING FREQUENCY	= +100 YRS
OVERTOPPING DISCHARGE	= +7.2 CMS
OVERTOPPING ELEVATION	= 240.85M



05-SEP-2004 08:55 \\p1\road\proj\2408\proj\2408.p1