

8/17/04

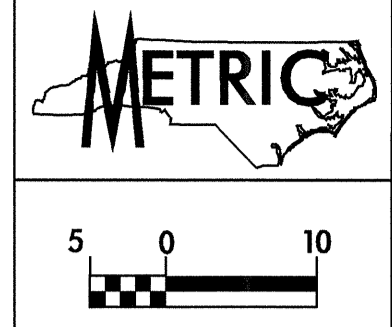
-DRIVE I-
 PI Sta. 0+69.093
 $\Delta = 5^\circ 57' 18.0" (RT)$
 $L = 93.541$
 $T = 46.813$
 $R = 900.000$
 $S.E. = 0.02$

-LREV-
 PI Sta. 17+79.440
 $\Delta = 29^\circ 32' 14.4" (RT)$
 $L = 257.762$
 $T = 131.813$
 $R = 500.000$
 $R.O. = 65$
 $S.E. = 0.05$

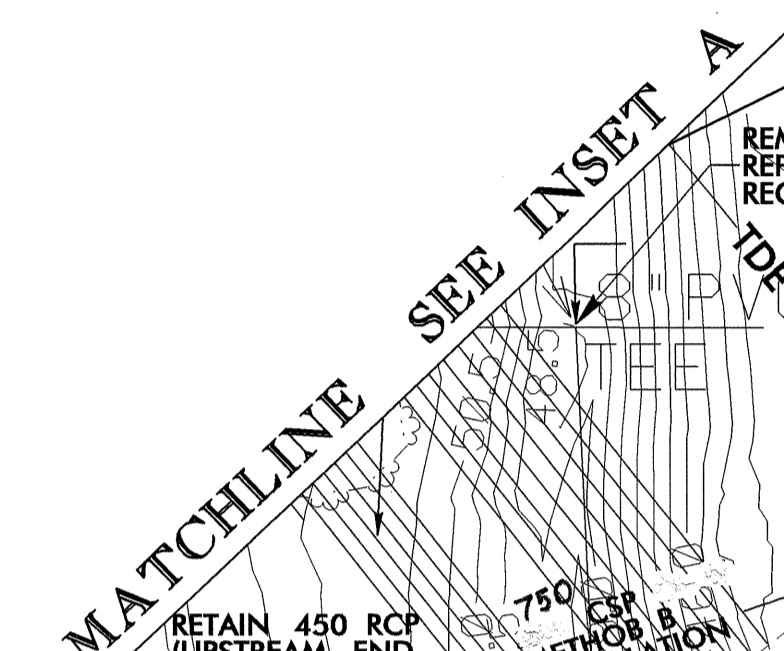
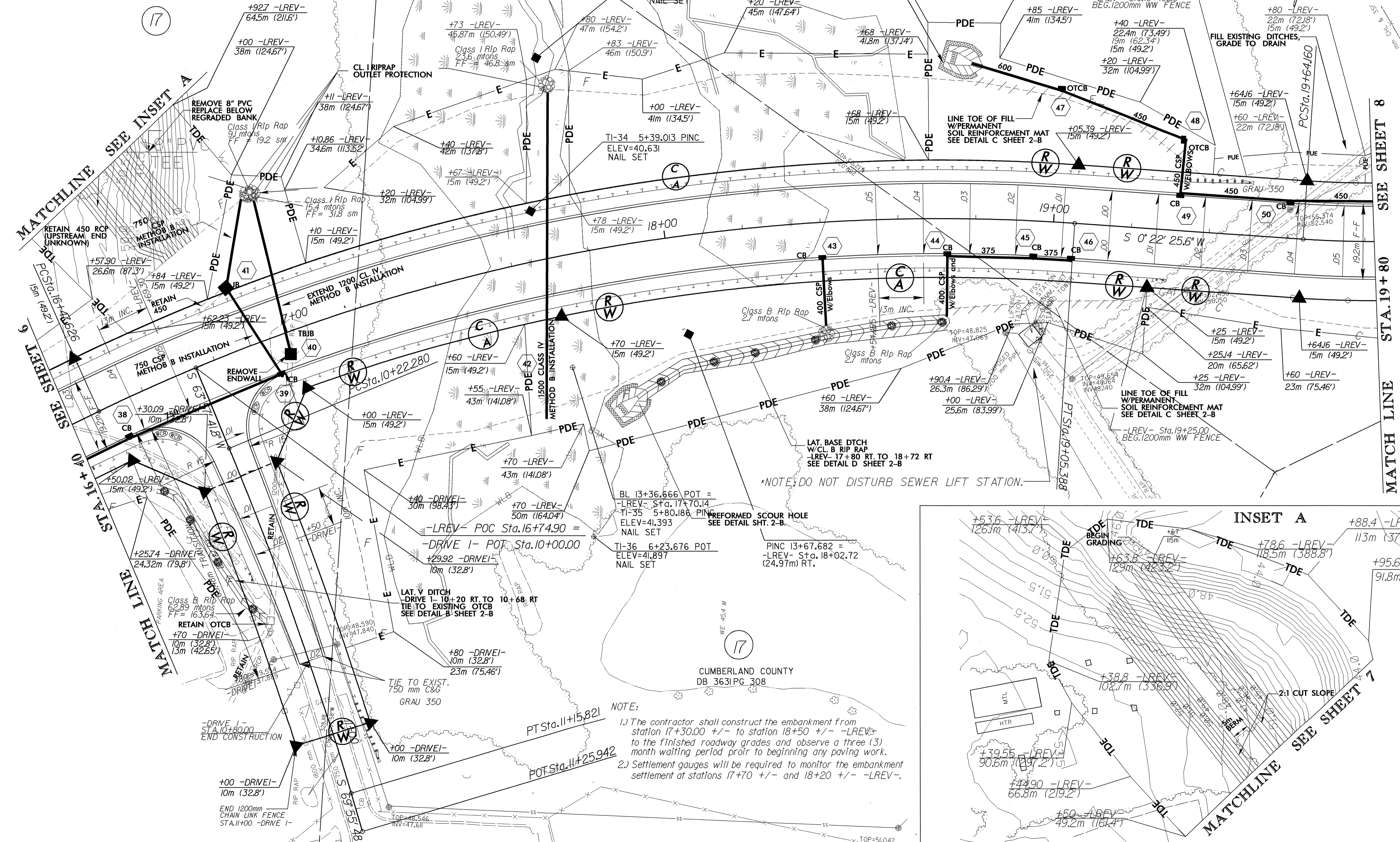
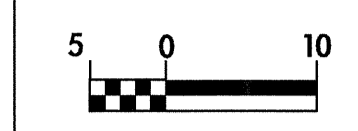
-LREV-
 PI Sta. 21+72.830
 $\Delta = 79^\circ 42' 07.8" (LT)$
 $L = 347.766$
 $T = 208.670$
 $R = 250.000$
 $R.O. = 78$
 $S.E. = 0.06$

CUMBERLAND COUNTY
DB 175 PG 138

STATE OF N.C.
DB 4206 PG 260
PB 65 PG 77



PROJECT REFERENCE NO.	U-2912	SHEET NO.	7
R/W SHEET NO.			
ROADWAY DESIGN ENGINEER			
HYDRAULICS ENGINEER			
CONST. REV.			
R/W REV.			



NOTE:

- The contractor shall construct the embankment from station 17+30.00 +/- to station 18+50 +/- -LREV- to the finished roadway grades and observe a three (3) month waiting period prior to beginning any paving work.
- Settlement gauges will be required to monitor the embankment settlement at stations 17+70 +/- and 18+20 +/- -LREV-.

NOTE: SEE SHEET 2-D FOR INTERSECTION DETAILS

NOTE: SEE SHEET 15 FOR -LREV- PROFILE

15-SEP-2004 10:02
FATUCK AT 102829651