

PROJECT REFERENCE NO.		SHEET NO.	
U-2912		EC-5/CONST.6	
R/W SHEET NO.			
ROADWAY DESIGN ENGINEER		HYDRAULICS ENGINEER	
CONST. REV.			
R/W REV.			

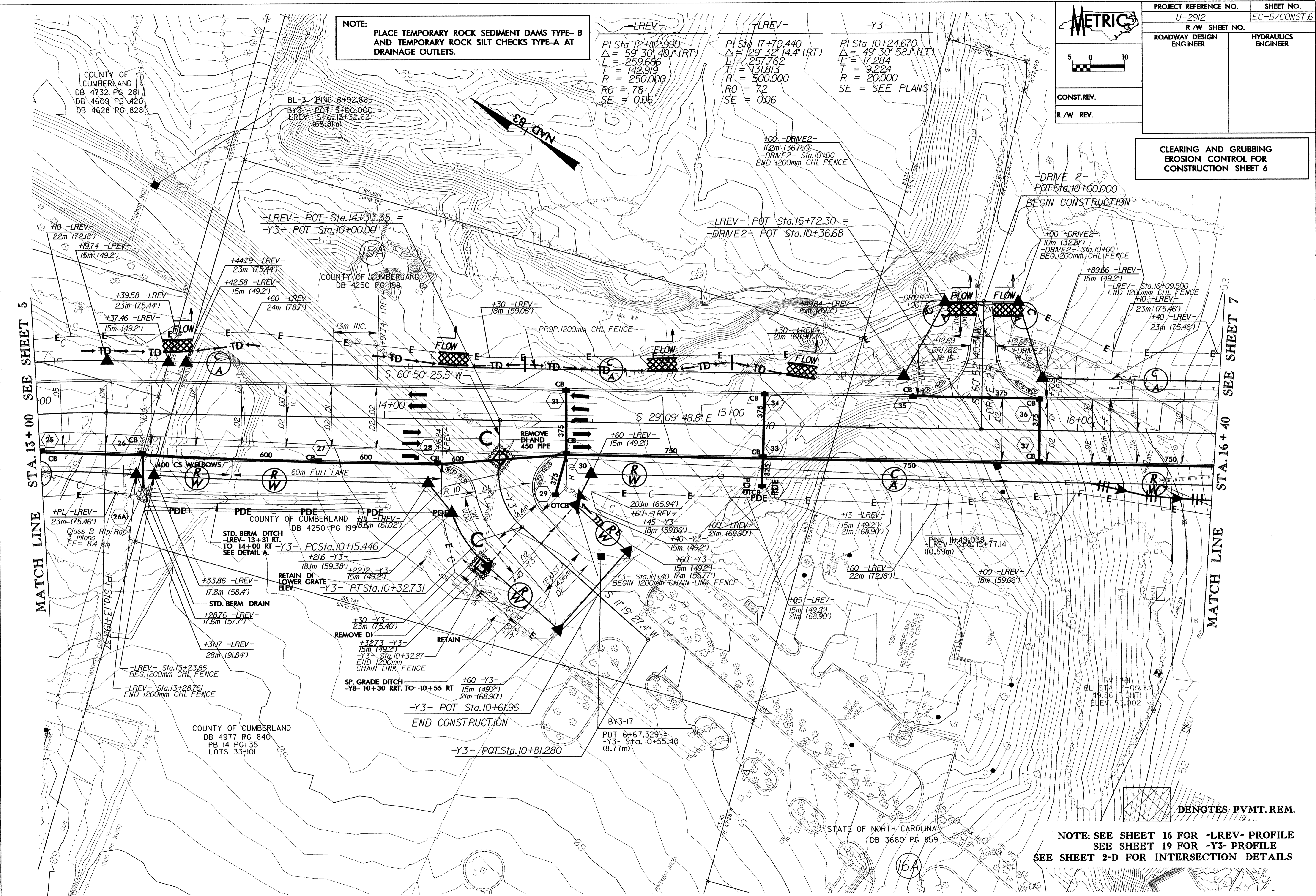
**CLEARING AND GRUBBING  
EROSION CONTROL FOR  
CONSTRUCTION SHEET 6**

**NOTE:**  
PLACE TEMPORARY ROCK SEDIMENT DAMS TYPE-B  
AND TEMPORARY ROCK SILT CHECKS TYPE-A AT  
DRAINAGE OUTLETS.

**-LREV-**  
PI Sta 12+02.990  
 $\Delta = 59^{\circ} 30' 40.1''$  (RT)  
L = 259.666  
T = 142.919  
R = 250.000  
RO = 78  
SE = 0.06

**-LREV-**  
PI Sta 17+79.440  
 $\Delta = 29^{\circ} 32' 14.4''$  (RT)  
L = 257.762  
T = 131.813  
R = 500.000  
RO = 72  
SE = 0.06

**-Y3-**  
PI Sta 10+24.670  
 $\Delta = 49^{\circ} 30' 58.1''$  (LT)  
L = 17.284  
T = 9.224  
R = 20.000  
SE = SEE PLANS



MATCH LINE STA. 13+00 SEE SHEET 5

MATCH LINE STA. 16+40 SEE SHEET 7

**DENOTES PVMT. REM.**

**NOTE: SEE SHEET 15 FOR -LREV- PROFILE  
SEE SHEET 19 FOR -Y3- PROFILE  
SEE SHEET 2-D FOR INTERSECTION DETAILS**

COUNTY OF CUMBERLAND  
DB 4732 PG 281  
DB 4609 PG 420  
DB 4628 PG 828

COUNTY OF CUMBERLAND  
DB 4250 PG 199

COUNTY OF CUMBERLAND  
DB 4977 PG 840  
PB 14 PG 35  
LOTS 33+101

STATE OF NORTH CAROLINA  
DB 3660 PG 859