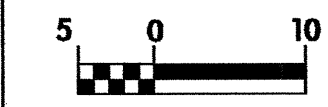
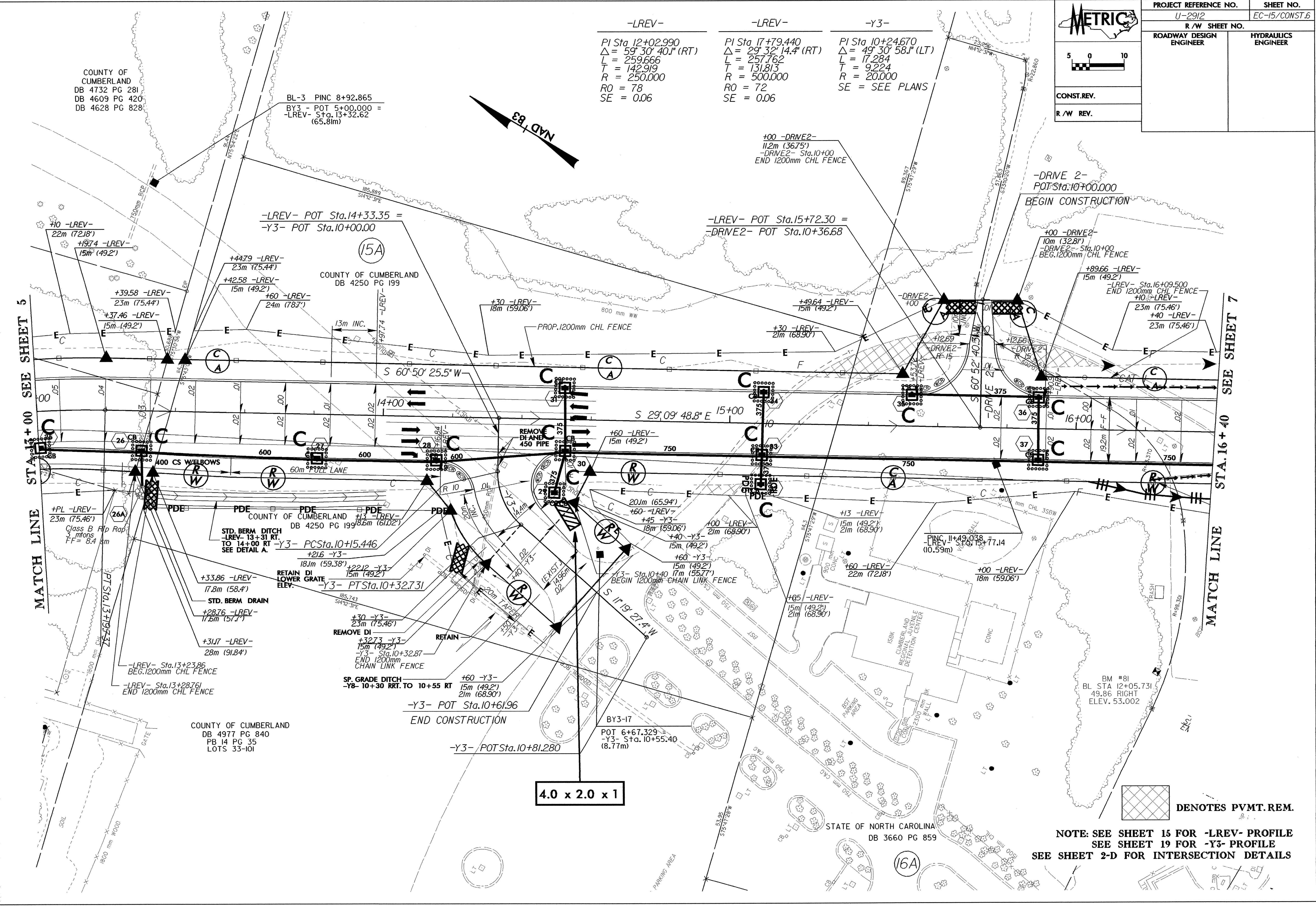
	PROJECT REFERENCE NO.	SHEET NO.
	U-2912	EC-15/CONST.6
	R/W SHEET NO.	
ROADWAY DESIGN ENGINEER	HYDRAULICS ENGINEER	
CONST. REV.		
R/W REV.		



-LREV- -LREV- -Y3-
 PI Sta 12+02.990 PI Sta 17+79.440 PI Sta 10+24.670
 $\Delta = 59^{\circ} 30' 40.1''$ (RT) $\Delta = 29^{\circ} 32' 14.4''$ (RT) $\Delta = 49^{\circ} 30' 58.1''$ (LT)
 L = 259.666 L = 257.762 L = 17.284
 T = 142.919 T = 131.813 T = 9.224
 R = 250.000 R = 500.000 R = 20.000
 RO = 78 RO = 72 SE = SEE PLANS
 SE = 0.06 SE = 0.06



MATCH LINE STA. 17+00 SEE SHEET 5

MATCH LINE STA. 16+40 SEE SHEET 7

4.0 x 2.0 x 1

 DENOTES PVMT. REM.

NOTE: SEE SHEET 15 FOR -LREV- PROFILE
 SEE SHEET 19 FOR -Y3- PROFILE
 SEE SHEET 2-D FOR INTERSECTION DETAILS

COUNTY OF CUMBERLAND
 DB 4732 PG 281
 DB 4609 PG 420
 DB 4628 PG 828

BL-3 PINC 8+92.865
 BY3 - POT 5+00.000 =
 -LREV- Sta. 13+32.62
 (65.81m)

-LREV- POT Sta. 14+33.35 =
 -Y3- POT Sta. 10+00.00

-LREV- POT Sta. 15+72.30 =
 -DRIVE2- POT Sta. 10+36.68

-DRIVE 2-
 POT Sta. 10+00.000
 BEGIN CONSTRUCTION

+00 -DRIVE2-
 10m (32.81')
 -DRIVE2- Sta. 10+00
 BEG. 1200mm CHL FENCE

+89.66 -LREV-
 15m (49.2')
 -LREV- Sta. 16+09.500
 END 1200mm CHL FENCE
 +10 -LREV-
 23m (75.46')
 +40 -LREV-
 23m (75.46')

+10 -LREV-
 22m (72.18')
 +19.74 -LREV-
 15m (49.2')

+39.58 -LREV-
 23m (75.44')
 +37.46 -LREV-
 15m (49.2')

+44.79 -LREV-
 23m (75.44')
 +42.58 -LREV-
 15m (49.2')

+60 -LREV-
 24m (78.7')

+30 -LREV-
 18m (59.06')

+49.64 -LREV-
 15m (49.2')

+12.69 -LREV-
 15m (49.2')

+12.66 -LREV-
 15m (49.2')

+PL -LREV-
 23m (75.46')
 Class B Rip Rap
 3' min
 FF = 8.4' min

STB. BERM DITCH
 -LREV- 13+31 RT.
 TO 14+00 RT
 SEE DETAIL A.

+33.86 -LREV-
 17.8m (58.4')
 STD. BERM DRAIN
 +28.76 -LREV-
 17.6m (57.7')

+31.17 -LREV-
 28m (91.84')
 -LREV- Sta. 13+23.86
 BEG. 1200mm CHL FENCE
 -LREV- Sta. 13+28.76
 END 1200mm CHL FENCE

+21.6 -Y3-
 18.1m (59.38')
 RETAIN DI
 LOWER GRATE
 ELEV.

+32.73 -Y3-
 15m (49.2')
 -Y3- Sta. 10+32.87
 END 1200mm
 CHAIN LINK FENCE

+60 -Y3-
 15m (49.2')
 21m (68.90')

-Y3- POT Sta. 10+61.96
 END CONSTRUCTION

-Y3- POT Sta. 10+81.280

COUNTY OF CUMBERLAND
 DB 4977 PG 840
 PB 14 PG 35
 LOTS 33-101

STATE OF NORTH CAROLINA
 DB 3660 PG 859

BM #81
 BL STA 12+05.731
 49.86 RIGHT
 ELEV. 53.002