

METRIC

CONST. REV.
R/W REV.

PROJECT REFERENCE NO. U-2912	SHEET NO. EC-23/CONST12
R/W SHEET NO.	
ROADWAY DESIGN ENGINEER	HYDRAULICS ENGINEER

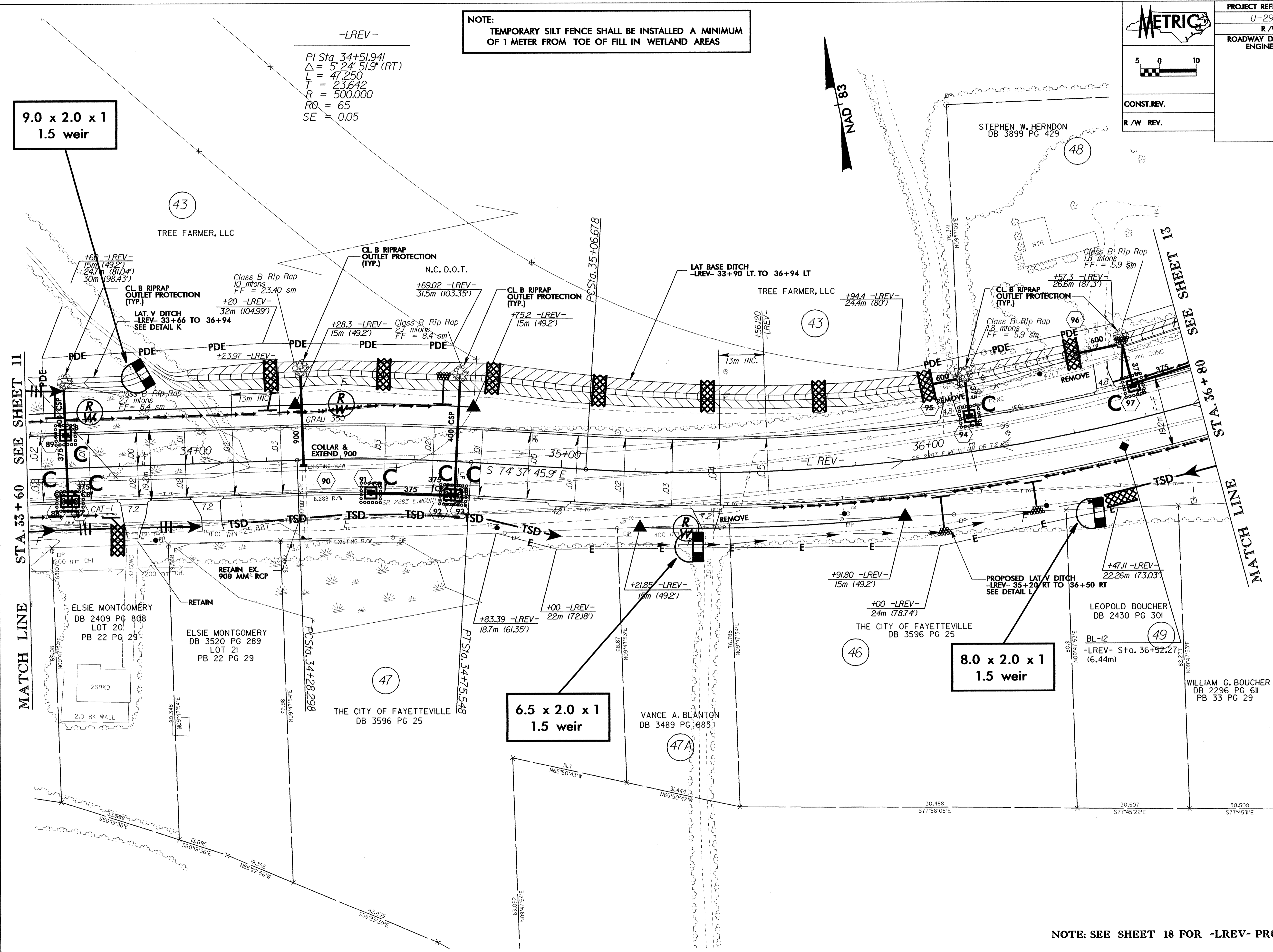
NOTE:
TEMPORARY SILT FENCE SHALL BE INSTALLED A MINIMUM OF 1 METER FROM TOE OF FILL IN WETLAND AREAS

-LREV-
PI Sta 34+51.941
 $\Delta = 5^{\circ} 24' 51.9''$ (RT)
L = 47.250
T = 23.642
R = 500.000
RO = 65
SE = 0.05

**9.0 x 2.0 x 1
1.5 weir**

**6.5 x 2.0 x 1
1.5 weir**

**8.0 x 2.0 x 1
1.5 weir**



NOTE: SEE SHEET 18 FOR -LREV- PROFILE