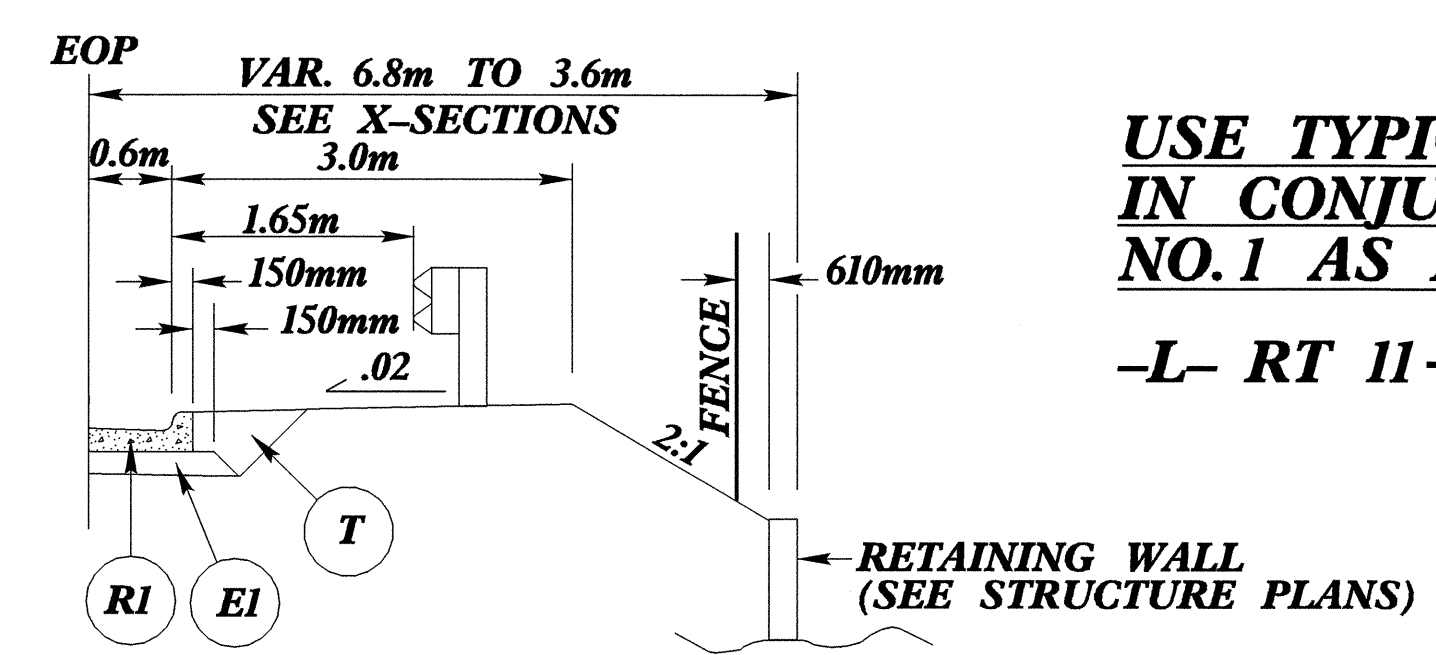
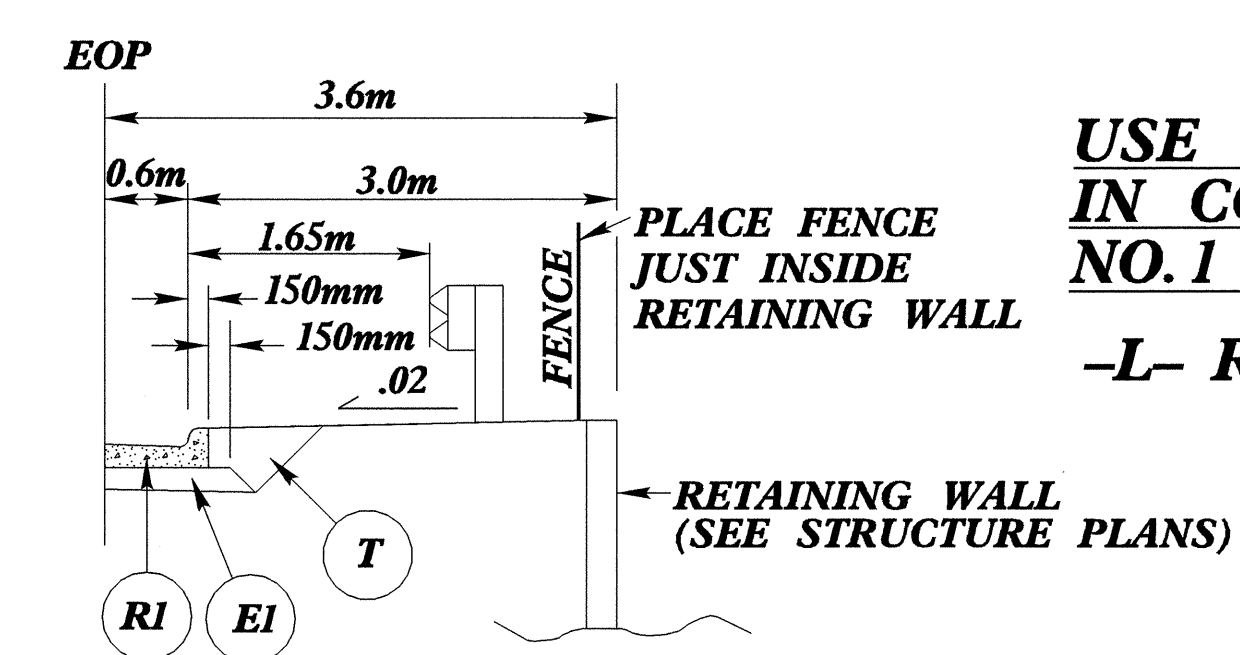


|   |  |
|---|--|
| PROJECT REFERENCE NO.<br><b>B-3256</b>        | SHEET NO.<br><b>2-A</b>                        |
| ROADWAY DESIGN ENGINEER<br><i>[Signature]</i> | PAVEMENT DESIGN ENGINEER<br><i>[Signature]</i> |
| SEAL 2284<br>7/15/04                          | SEAL 1368<br>7/19/04                           |



**TYPICAL SECTION NO. 1C**

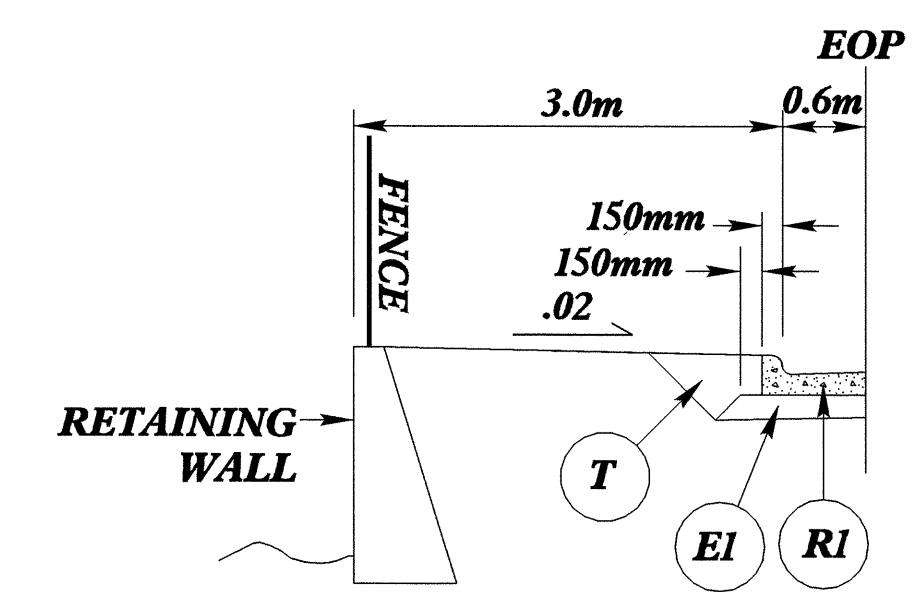
**USE TYPICAL SECTION NO. 1C  
IN CONJUNCTION WITH T. S.  
NO. 1 AS FOLLOWS:**  
-L- RT 11+50.000 TO 11+60.000



**TYPICAL SECTION NO. 1D**

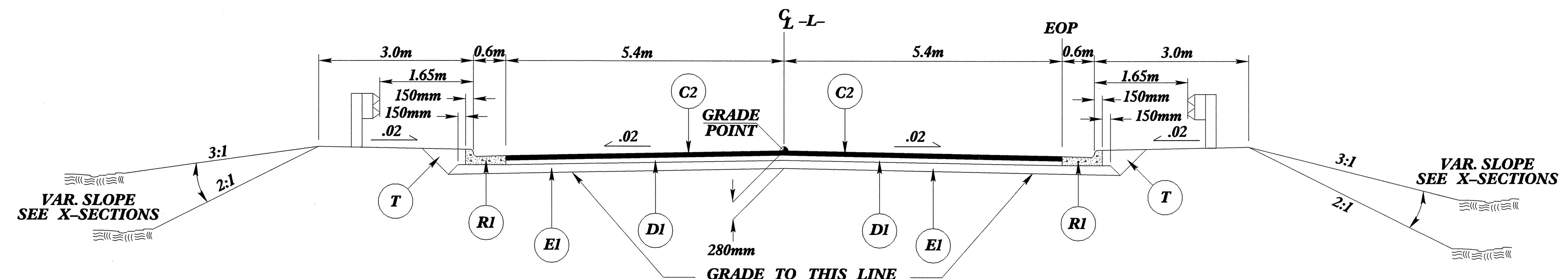
**USE TYPICAL SECTION NO. 1D  
IN CONJUNCTION WITH T. S.  
NO. 1 & 2 AS FOLLOWS:**  
-L- RT 11+60.000 TO 12+65.000

**NOTE: PLACE FENCE ALONG -Y2- 610MM  
FROM RETAINING WALL IF PAVED  
DITCH IS PRESENT, OTHERWISE  
PLACE FENCE ADJACENT TO  
RETAINING WALL**



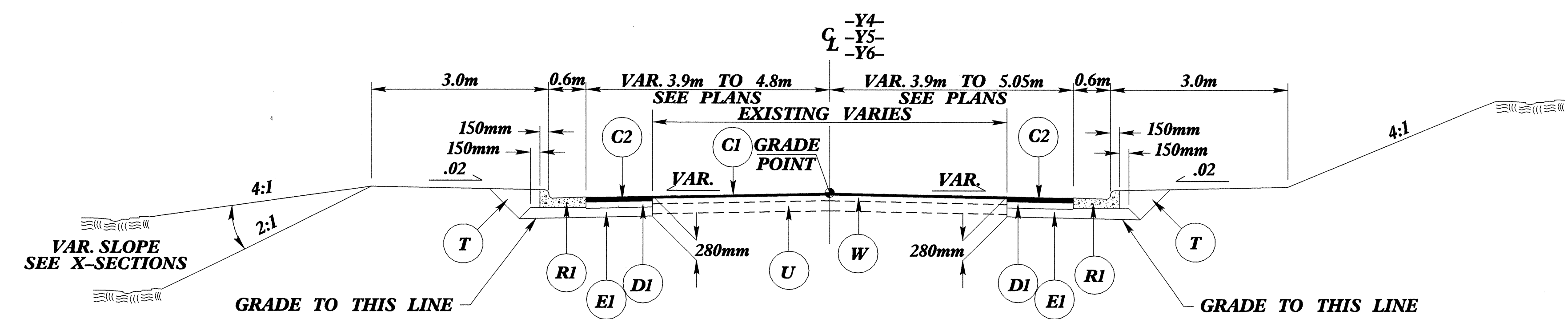
**TYPICAL SECTION NO. 1E**

**USE TYPICAL SECTION NO. 1E  
IN CONJUNCTION WITH T. S.  
NO. 1 AS FOLLOWS:**  
-L- LT 14+40.000 TO 14+60.000



**TYPICAL SECTION NO. 2**

**USE TYPICAL SECTION NO. 2 AS FOLLOWS:**  
-L- 12+20.000 TO 12+68.908 (BEGIN BRIDGE)  
-L- 13+05.108 (END BRIDGE) TO 13+80.000



**TYPICAL SECTION NO. 3**

**USE TYPICAL SECTION NO. 3 AS FOLLOWS:**  
-Y4- 10+05.540 TO 10+45.000  
-Y5- 10+20.000 TO 10+68.563  
-Y6- 10+04.933 TO 10+25.000

|    |                    |
|----|--------------------|
| C1 | 35mm S9.5B         |
| C2 | 70mm S9.5B         |
| C3 | VAR. S9.5B         |
| D1 | 110mm I19.0B       |
| D2 | VAR. I19.0B        |
| E1 | 100mm B25.0.0B     |
| E2 | VAR. B25.0.0B      |
| RI | 750mm C&G          |
| R2 | 200mm x 450mm CURB |
| T  | EARTH MATERIAL     |
| U  | EXIST. PAVEMENT    |
| W  | WEDGING            |

14-JUL-2004 09:50 SCL\ncaster RT RD212301 14-JUL-2004 09:50 SCL\ncaster RT RD212301