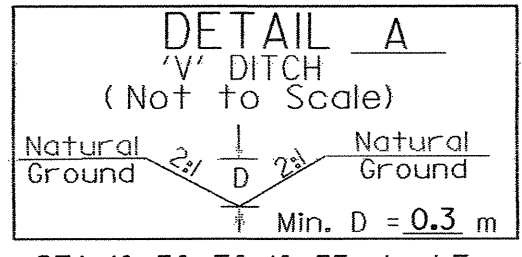
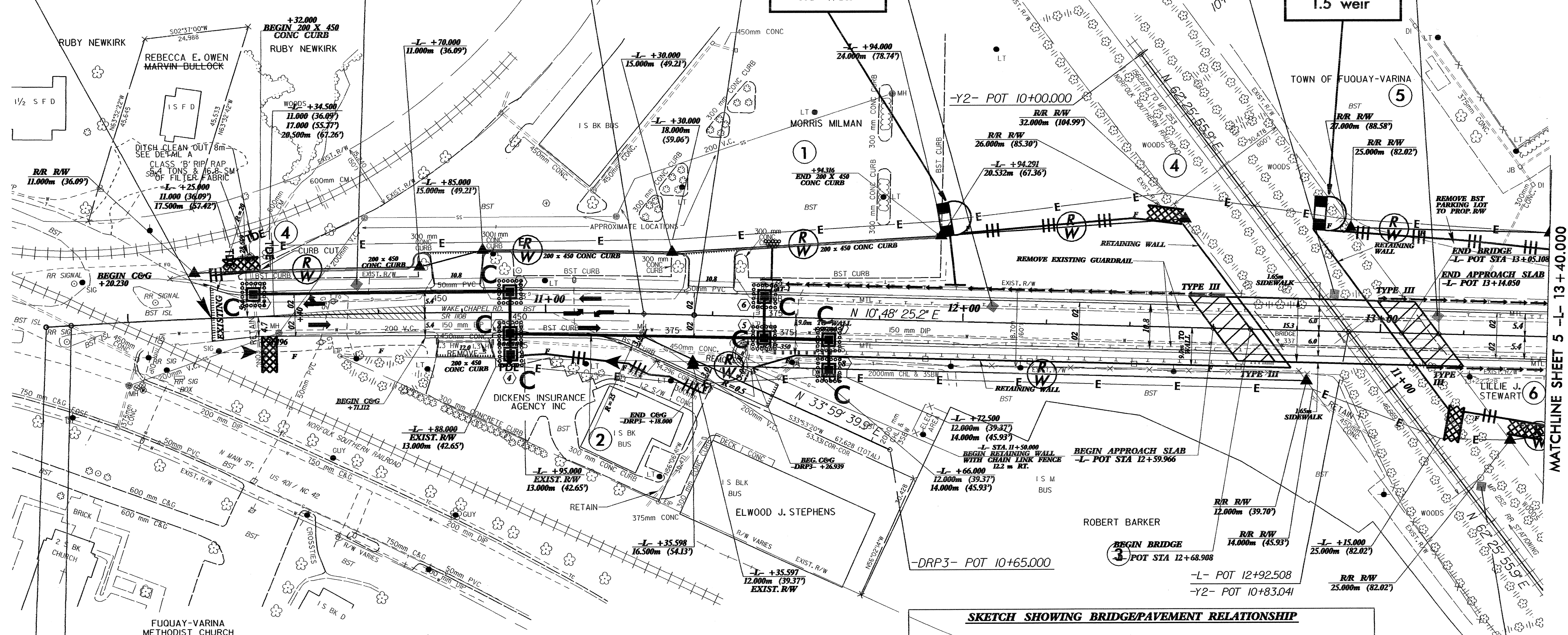


PROJECT REFERENCE NO.	SHEET NO.
B-3256	EC-5CONST.4
R/W SHEET NO.	
ROADWAY DESIGN ENGINEER	HYDRAULICS ENGINEER
CONST. REV.	
R/W REV.	

**DATUM DESCRIPTION**  
 THE LOCALIZED COORDINATE SYSTEM DEVELOPED FOR THIS PROJECT IS BASED ON THE STATE PLANE COORDINATES ESTABLISHED BY NGDS FOR MONUMENT "GROWERS" WITH NAD 83 STATE PLANE GRID COORDINATES OF NORTHING: 2041029269(m) EASTING: 627779.3989(m) THE AVERAGE COMBINED GRID FACTOR USED ON THIS PROJECT (GROUND TO GRID) IS: 0.99874900 THE N.C. LAMBERT GRID BEARING LOCALIZED HORIZONTAL GROUND DISTANCE FROM "GROWERS" TO -L- STATION 10+20.000 IS S 29° 05' 08.33" W 40.3537 m ALL LINEAR DIMENSIONS ARE LOCALIZED HORIZONTAL DISTANCES VERTICAL DATUM USED IS NGVD 29



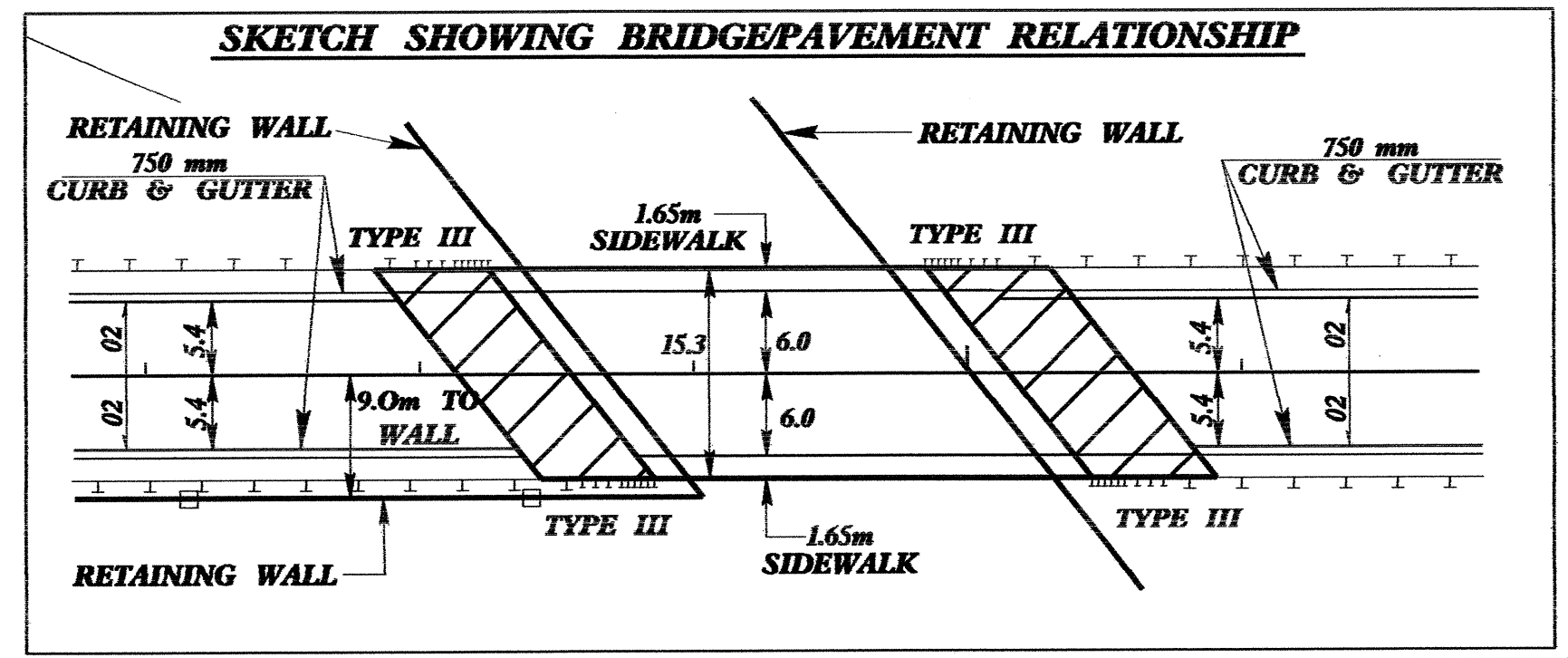
**BEGIN STATE PROJECT B-3256**  
**-L- POC STA. 10+20.000**



-L-  
 $PI = 10+61.014$   
 $\Delta = 4' 53'' 12.2'' (RT)$   
 $L = 149.257$   
 $T = 74.674$   
 $R = 1,750.000$   
 $SE = NC$

-L- PC 9+86.341  
 -L- POT 9+80.324  
 N 5° 55' 13.0" E

- NOTES:**
- FOR -L- PROFILE SEE SHEET NO. 6
  - ALL RADII = 2 METERS ON 200 X 450 CHANNELIZATION CURB UNLESS NOTED OTHERWISE.



L POT 13+25.152 =  
 BY2-10 POT 6+66.662  
 36.200 RT

MATCHLINE SHEET 5 -L- 13+40.000